

Yakima Basin Integrated Plan Technical Projects Update

Toppenish, WA
September 20, 2018



Presented by:

Teresa Hauser, CEPR Project Manager

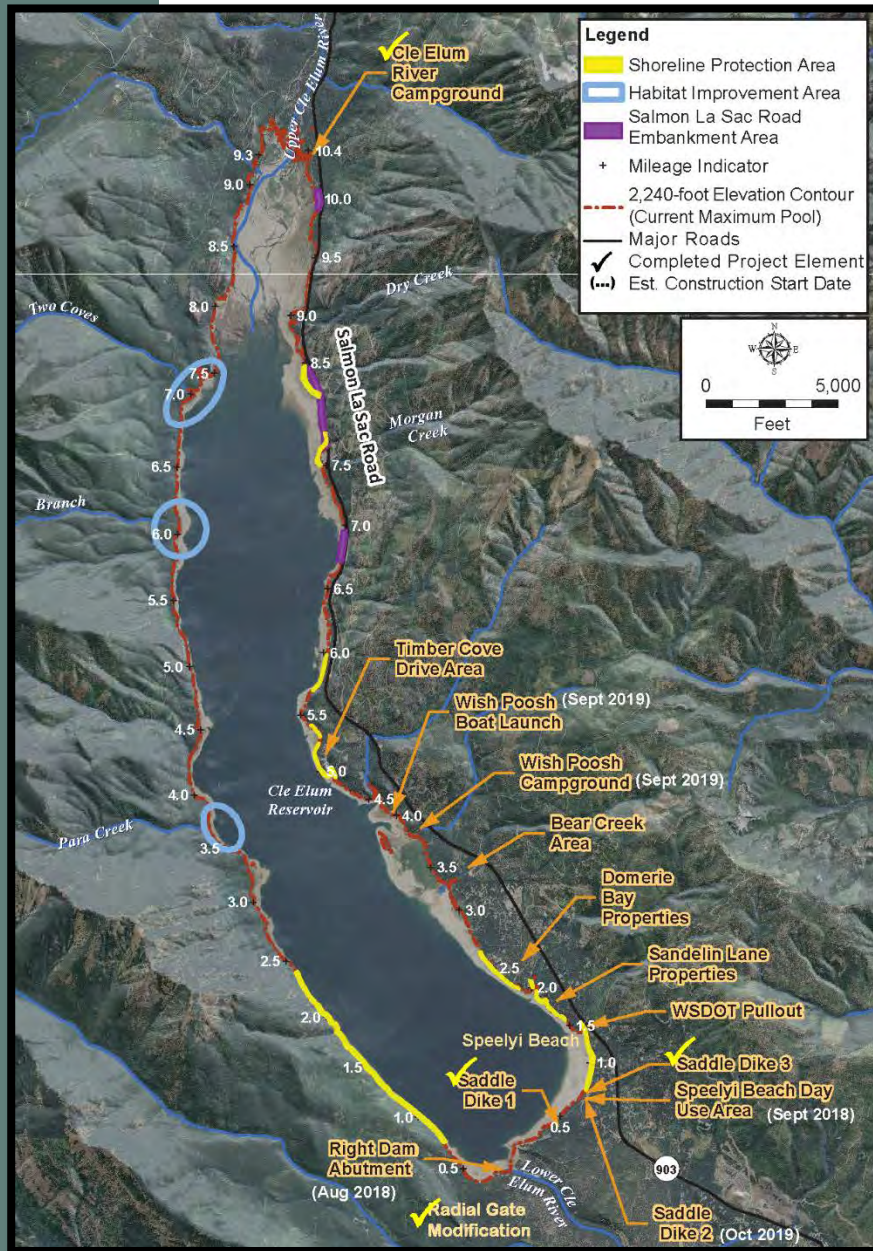
Richard Visser, CEFPP Project Manager



Cle Elum Pool Raise Project

Structural and Operational Changes





Cle Elum Pool Raise Update

14,600 acre-feet for Yakima River instream flows

- Modify radial gates
- Shoreline protection
- Land acquisition

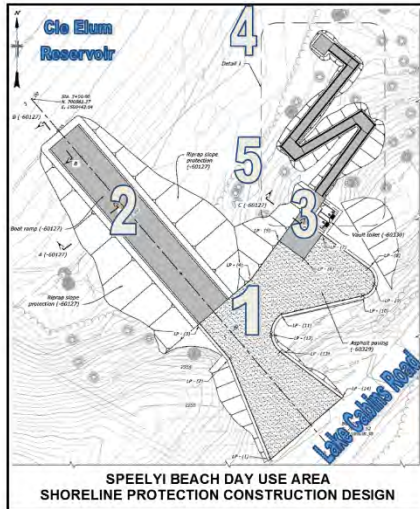


Cle Elum Dam Pool Raise Radial Gates Complete



NOTICE

RECREATION CLOSURE DUE TO CONSTRUCTION BEGINNING SEPTEMBER 10, 2018



BACKGROUND AND PURPOSE:

- The Cle Elum Pool Raise Project (CEPR) will provide additional water (14,600 acre-ft) in Cle Elum Reservoir to be released to improve aquatic resources for fish habitat, rearing, and migration in the Cle Elum and upper Yakima rivers.
- CEPR will increase the full pool water surface elevation by 3 feet, and raise the dam spillway gates and dikes by 3 feet. Shoreline construction work will protect the shoreline from erosion and inundation from the elevated water surface (2243 ft).
- This project is included in the Yakima Basin Integrated Plan Structural and Operational Changes element and fulfills congressional authorization Title XII of Public Law 103-434.
- Reclamation and the Washington State Department of Ecology released a Final Environmental Impact Statement and Reclamation issued a Record of Decision in June 2015.
- Modification of existing dam spillway radial gates was completed April 2017. The first shoreline construction was completed November 2017 at Cle Elum River Campground.
- Shoreline protection will be constructed for the areas indicated on the map, see orange/yellow areas.



PROJECT WORKSITE DESCRIPTION:

Work to protect Cle Elum Dam and improve the Speelyi Beach access will occur mid-September 2018 thru early January 2019 and will include:

- 1) Raise the elevation of Cle Elum Dam Saddle Dike (parking lot) and pave surface
- 2) Construct a new concrete boat ramp
- 3) Install new vault toilet and new concrete pedestrian ramp to beach
- 4) Install anchored log structures
- 5) Plant and reseed site

For more information about the Cle Elum Pool Raise visit the Reclamation website at <http://www.usbr.gov/pn/programs/eis/cleelumraise/index.html> or contact the Columbia-Cascades Area Office at (509) 575-5848, or the Cle Elum Ranger District at (509) 852-1100

For more information about the Yakima Basin Integrated Plan visit the Washington State Department of Ecology website at <http://www.ecy.wa.gov/programs/wr/cwp/YBIP.html>



Cle Elum Reservoir Shoreline Construction

Speelyi Day Use Area New Construction Area Notice

Temporary closure Sept 10,
2018 thru Jan 2019.

Cle Elum Reservoir Shoreline Construction



Speelyi Day Use Area New Construction, not to scale



Speelyi Day Use Area Construction



Pre-construction stake out/site visit



Speelyi Day Use Area Construction



Log placement



Cle Elum Pool Raise Project

Contracts/Timeline

Cle Elum Dam Pool Raise Contracts	Duration	Status
Radial Gates	2 years	Completed – April 2017
Cle Elum River Campground	2 months	Completed – Nov 2017
**Land Acquisitions	5 years*	In-progress
** Speelyi Beach Day Use	1 year	Awarded 2018, Construction Ongoing
Wishpoosh Campground and Boat Launch	1 year	Award - 2019
Timber Cove	1 to 2 years	Award – 2019*
Morgan Creek & Night Sky Drive	1 to 2 years	Award – TBD*
Domerie Bay	1 to 2 years	Award – TBD*
Sandelin	1 to 2 years	Award – TBD*
Speelyi Beach	1 to 2 years	Award – TBD*
Anna Bell	1 to 2 years	Award – TBD*

*Contingent on funding

** Funded by WIIN Act 2016 received \$2M FY 2017

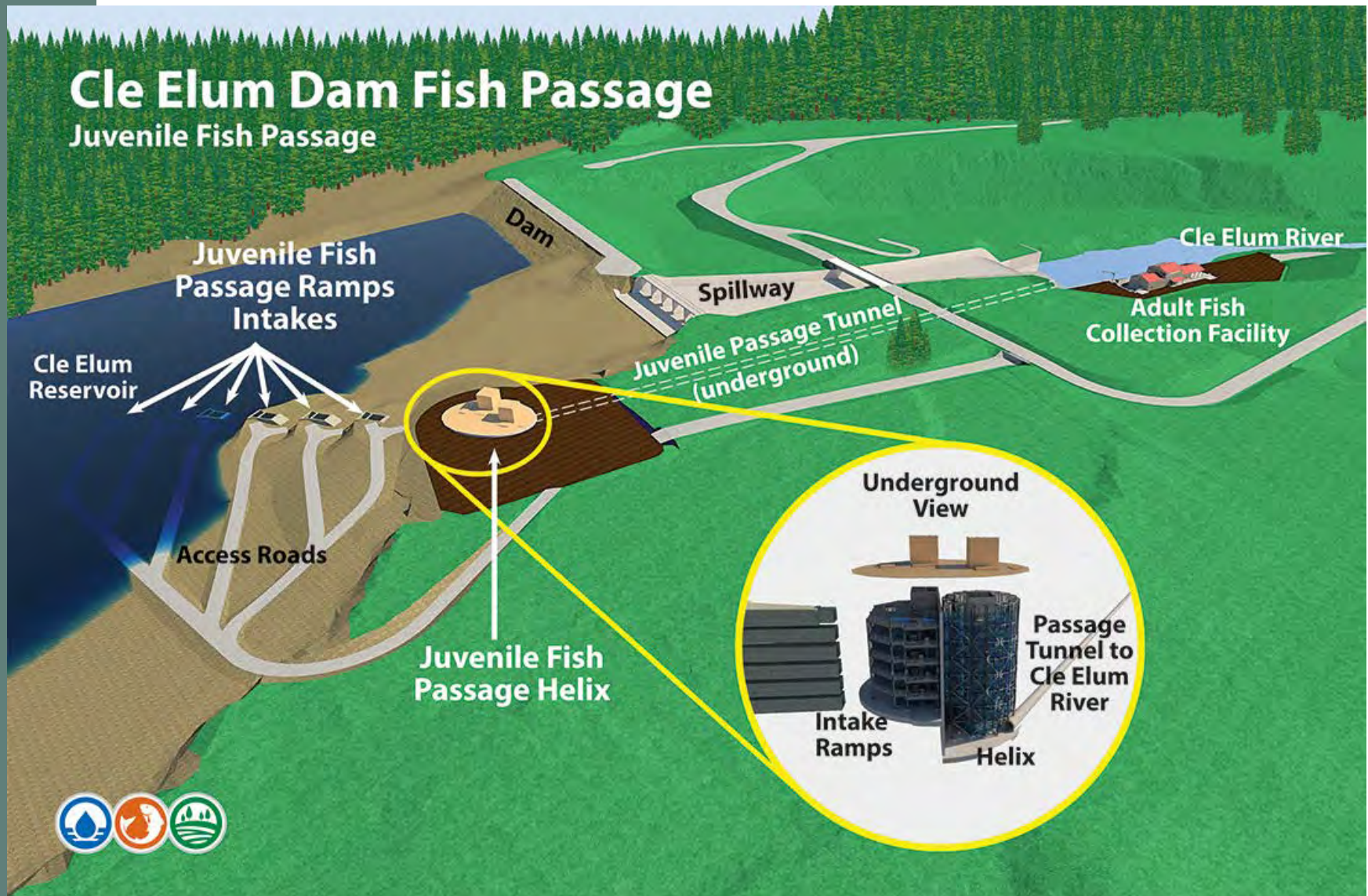


Cle Elum Dam Fish Passage Facilities

Reservoir Fish Passage



Cle Elum Dam Fish Passage



Cle Elum Dam Fish Passage



Secant Pile With Completed Cap Beam



Secant Pile Vault

August - 2018

- 7 Walers Installed**
- Last Waler at 87'**
- Secant Floor at 97'**
- Ahead of Schedule**
- Great Job!**
- **Secant Contractor**
- **Reclamation Inspectors**



Cle Elum Dam Fish Passage Secant Pile Vault



August - Working on final excavation



Secant Pile Vault



Lifting equipment out
of Secant Pile Vault



Secant Pile Contract – Substantially Complete



Completion of Cle Elum Secant Pile Contract
Cle Elum Dam Fish Passage Project, Washington
2016 – 2018



Tunnel Contract - Construction Status



Slope Stability

Welded Wire Fabric & Soil Anchors



Shotcreting Wire Fabric and Soil Anchors

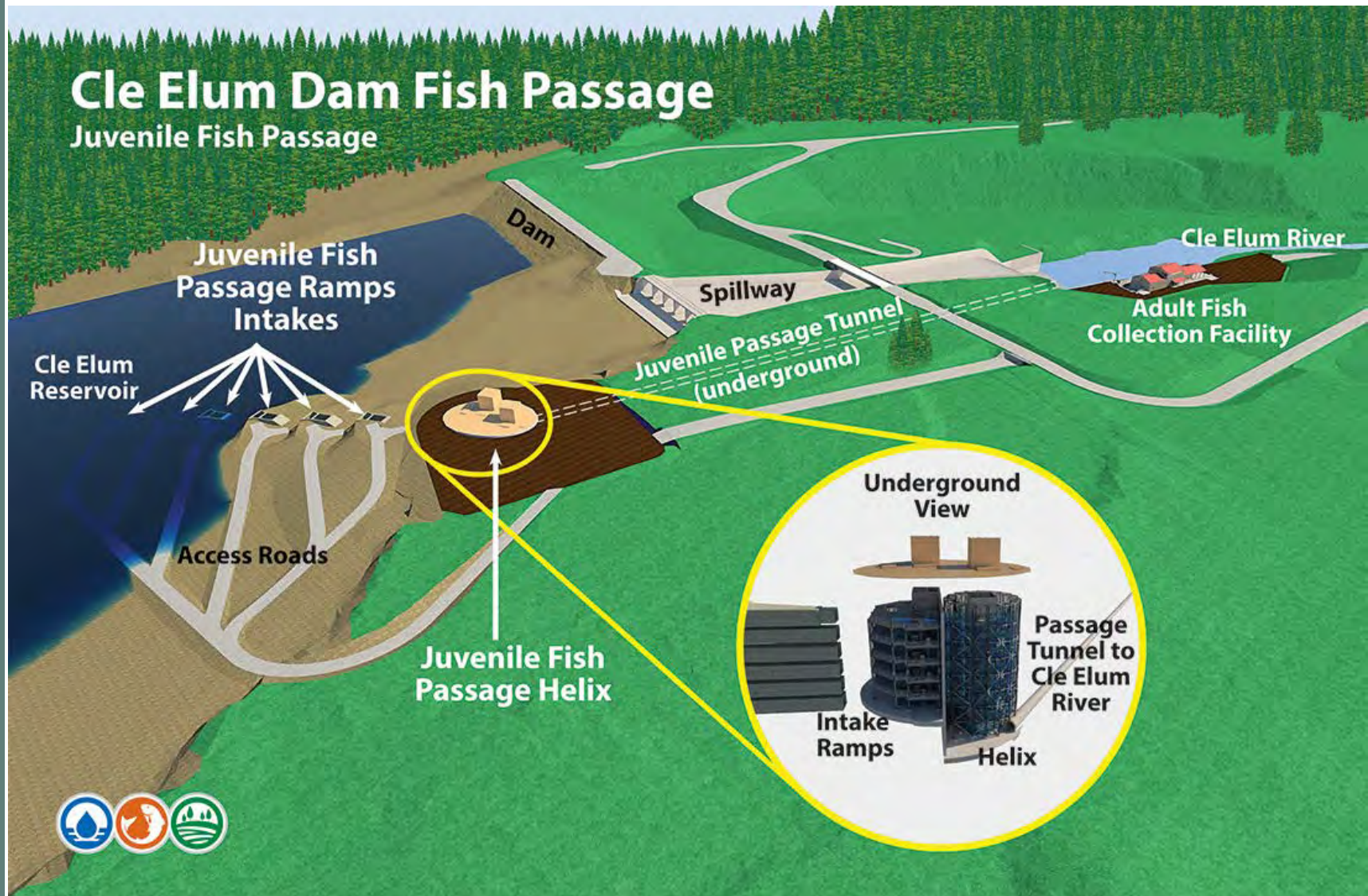


Tunnel Work

September 17, 2018



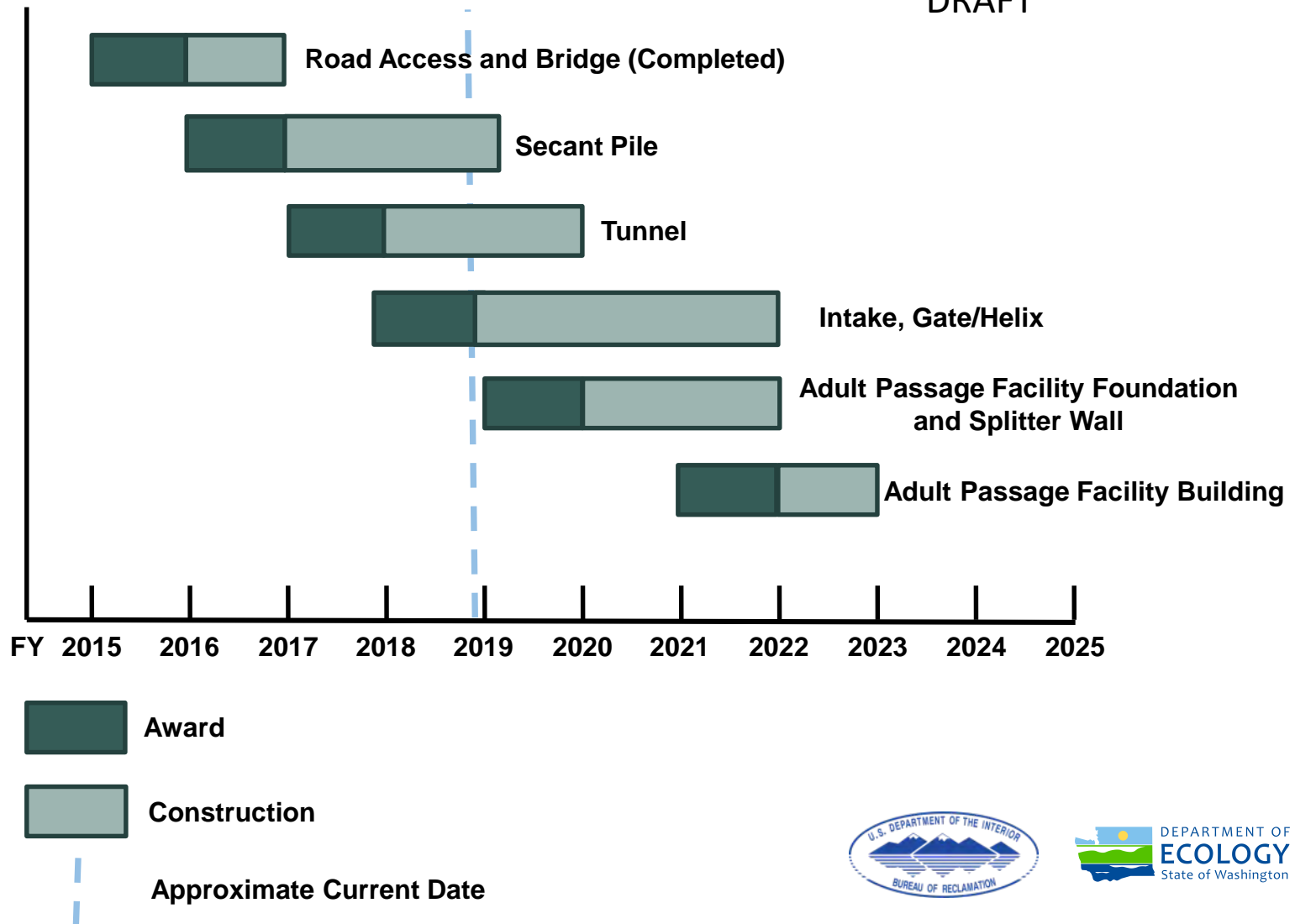
Intake, Gate and Helix Update



Cle Elum Dam Fish Passage Facilities Construction

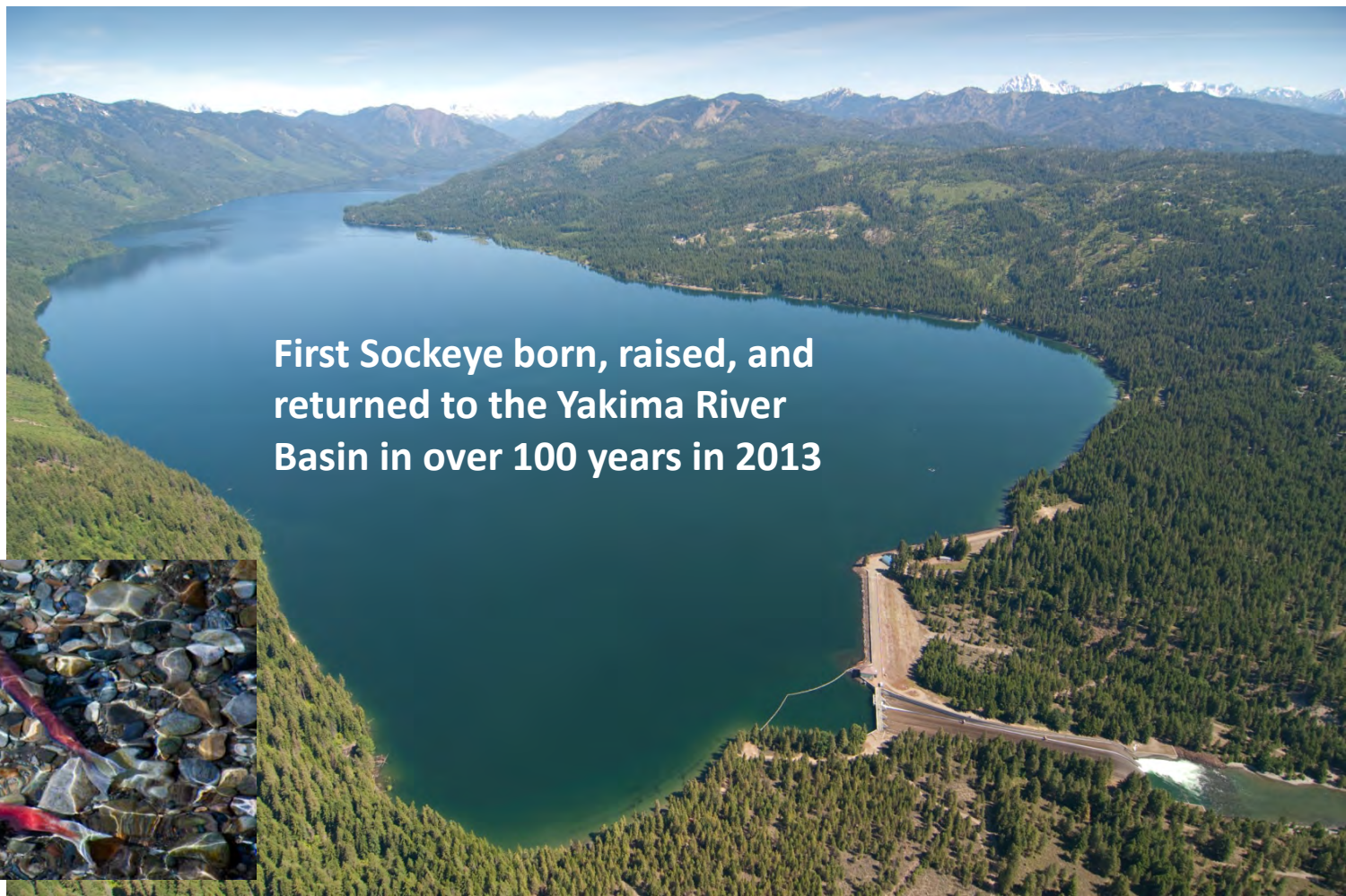
Multiple Contracts Timeline

DRAFT



USGS Studies – Tobias Kock

- 1. 2017 Whooshh Transport System Results**
- 2. 2018 Sockeye Tracking – Roza to Cle Elum**
- 3. 2018 Lower Yakima River Salmon Tracking**



First Sockeye born, raised, and
returned to the Yakima River
Basin in over 100 years in 2013



Questions?

For further information on the web:

<http://www.usbr.gov/pn/programs/yrbwep/2011integratedplan/>

<http://www.ecy.wa.gov/programs/wr/cwp/YBIP.html>

