

Yakima Basin Integrated Plan Technical Projects Update

Yakima, WA
June 6, 2018



Presented by:

Julia Long, Assistant YRBWEP Manager

Elayne Hovde-Knudson, Project Manager

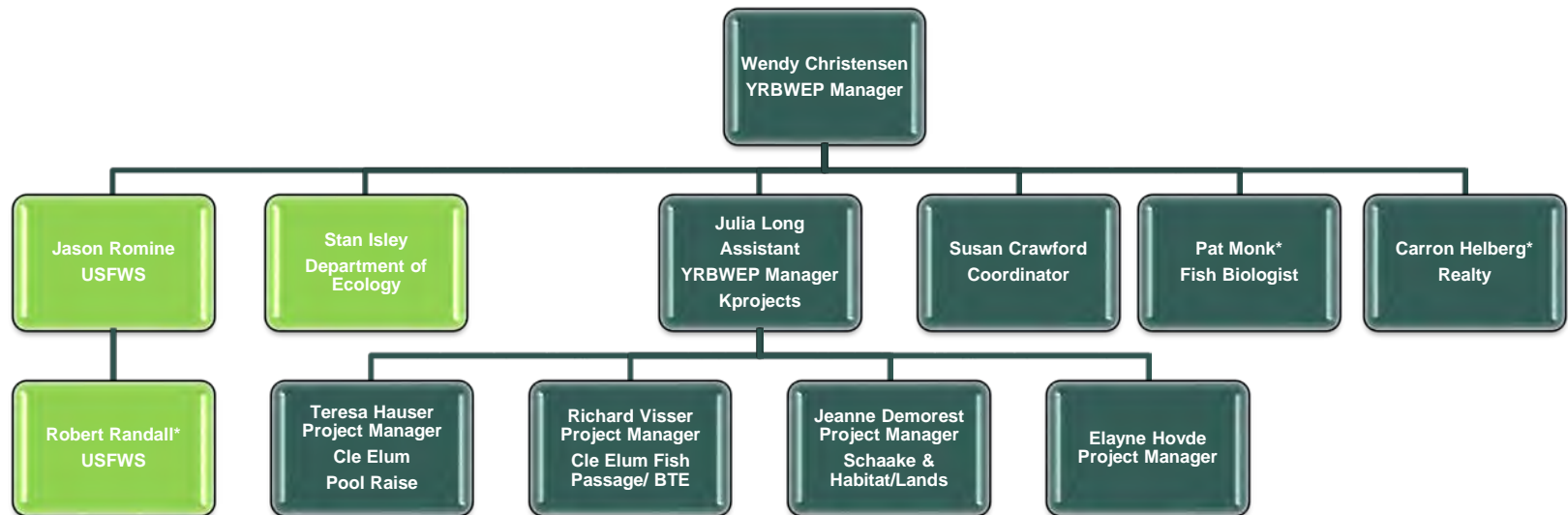
Teresa Hauser, CEPR Project Manager

Richard Visser, CEFP Project Manager



Yakima River Basin Water Enhancement Project

Organizational Chart



Surface Water Storage and Structural and Operational Changes



Kprojects Update

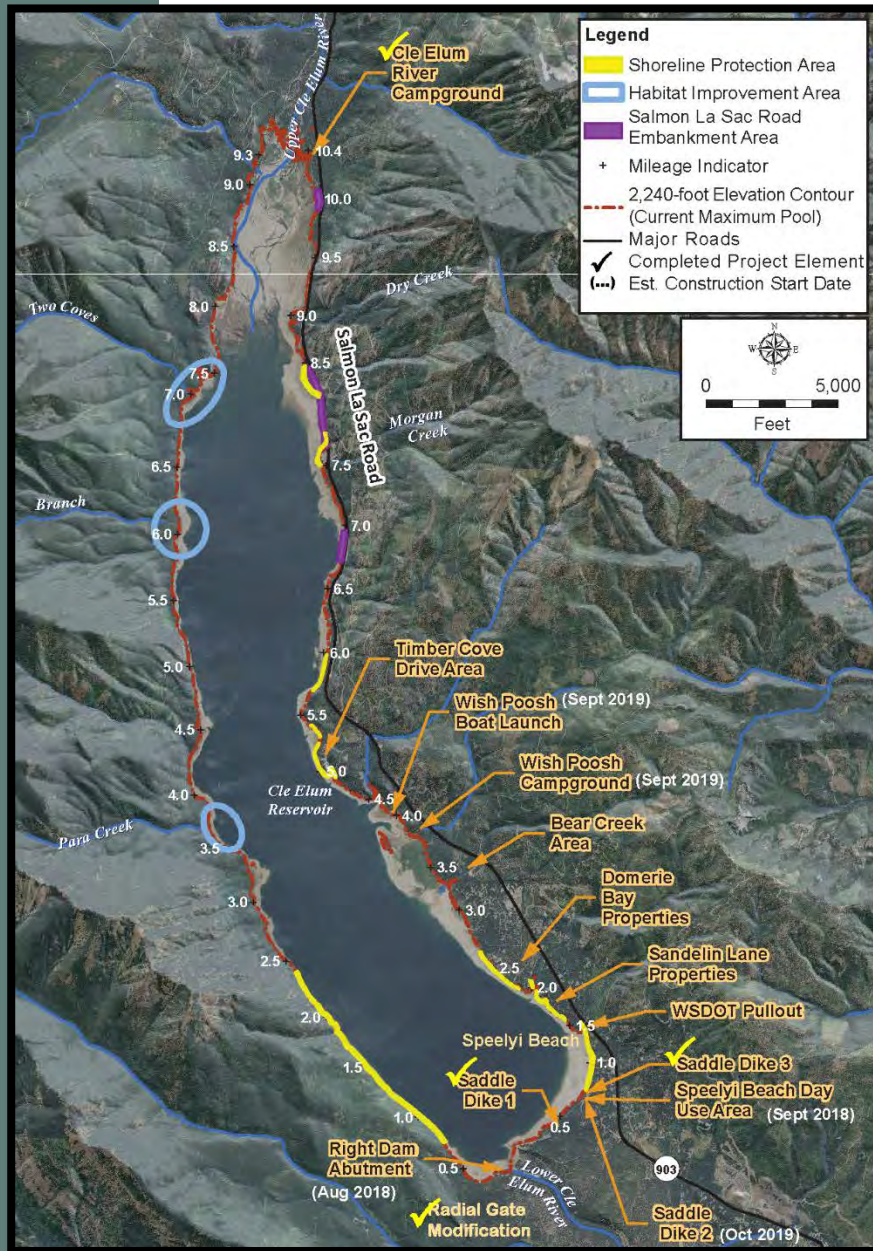
- Supplemental Draft EIS released to public
April 13, 2018
- Public Meetings held mid-May by Reclamation and Ecology as part of NEPA/SEPA process
- Other meetings held in Seattle area by interested parties.
- 90 day comment period ends July 11, 2018
- Final EIS to be prepared with Record of Decision to be issued 30 days or more after Final EIS released.



KRD Upper Yakima System Storage Study Update

- Water Infrastructure Improvements for the Nation Act 2016 (WIIN) awarded \$2.5M
 - 2-3 year study for storage facility feasibility
 - Three potential sites to be evaluated
 - Meet with Reclamation's Regional Office Geologist June 21, to visit potential sites
 - Gravity fed from KRD's North or South Branch Canals during off season irrigation.
 - Gravity fed into the Yakima River for shaping flows





Cle Elum Pool Raise Update

14,600 acre-feet for Yakima River instream flows

- Modify radial gates
- Shoreline protection
- Land acquisition

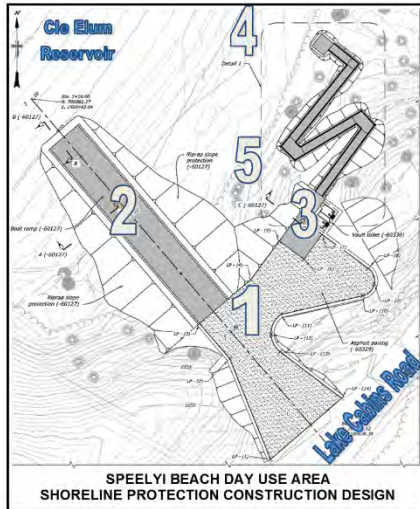


Cle Elum Dam Pool Raise Radial Gates Complete



NOTICE

RECREATION CLOSURE DUE TO CONSTRUCTION BEGINNING SEPTEMBER 10, 2018



BACKGROUND AND PURPOSE:

- The Cle Elum Pool Raise Project (CEPR) will provide additional water (14,600 acre-ft) in Cle Elum Reservoir to be released to improve aquatic resources for fish habitat, rearing, and migration in the Cle Elum and upper Yakima rivers.
- CEPR will increase the full pool water surface elevation by 3 feet, and raise the dam spillway gates and dikes by 3 feet. Shoreline construction work will protect the shoreline from erosion and inundation from the elevated water surface (2243 ft).
- This project is included in the Yakima Basin Integrated Plan Structural and Operational Changes element and fulfills congressional authorization Title XII of Public Law 103-434.
- Reclamation and the Washington State Department of Ecology released a Final Environmental Impact Statement and Reclamation issued a Record of Decision in June 2015.
- Modification of existing dam spillway radial gates was completed April 2017. The first shoreline construction was completed November 2017 at Cle Elum River Campground.
- Shoreline protection will be constructed for the areas indicated on the map, see orange/yellow areas.

PROJECT WORKSITE DESCRIPTION:

Work to protect Cle Elum Dam and improve the Speelyi Beach access will occur mid-September 2018 thru early January 2019 and will include:

- 1) Raise the elevation of Cle Elum Dam Saddle Dike (parking lot) and pave surface
- 2) Construct a new concrete boat ramp
- 3) Install new vault toilet and new concrete pedestrian ramp to beach
- 4) Install anchored log structures
- 5) Plant and reseed site

For more information about the Cle Elum Pool Raise visit the Reclamation website at <http://www.usbr.gov/pn/programs/eis/cleelumraise/index.html> or contact the Columbia-Cascades Area Office at (509) 575-5848, or the Cle Elum Ranger District at (509) 852-1100

For more information about the Yakima Basin Integrated Plan visit the Washington State Department of Ecology website at <http://www.ecy.wa.gov/programs/wr/cwp/YBIP.html>



Cle Elum Reservoir Shoreline Construction

Speelyi Day Use Area New Construction Area Notice

Temporary closure Sept 10,
2018 thru early Jan 2019.

Cle Elum Reservoir Shoreline Construction



Speelyi Day Use Area New Construction, not to scale



Cle Elum Reservoir Shoreline Construction



Wishpoosh Campground and Boat Launch, not to scale



Cle Elum Pool Raise Project

Contracts/Timeline

Cle Elum Dam Pool Raise Contracts	Duration	Status
Radial Gates	2 years	Completed – April 2017
Cle Elum River Campground	2 months	Completed – Nov 2017
**Land Acquisitions	5 years*	In-progress
** Speelyi Beach Day Use	1 year	Award - 2018
Wishpoosh Campground and Boat Launch	1 year	Award - 2019
Timber Cove	1 to 2 years	Award – 2019*
Morgan Creek & Night Sky Drive	1 to 2 years	Award – TBD*
Domerie Bay	1 to 2 years	Award – TBD*
Sandelin	1 to 2 years	Award – TBD*
Speelyi Beach	1 to 2 years	Award – TBD*
Anna Bell	1 to 2 years	Award – TBD*

*Contingent on funding

** Funded by WIIN Act 2016 received \$2M FY 2017

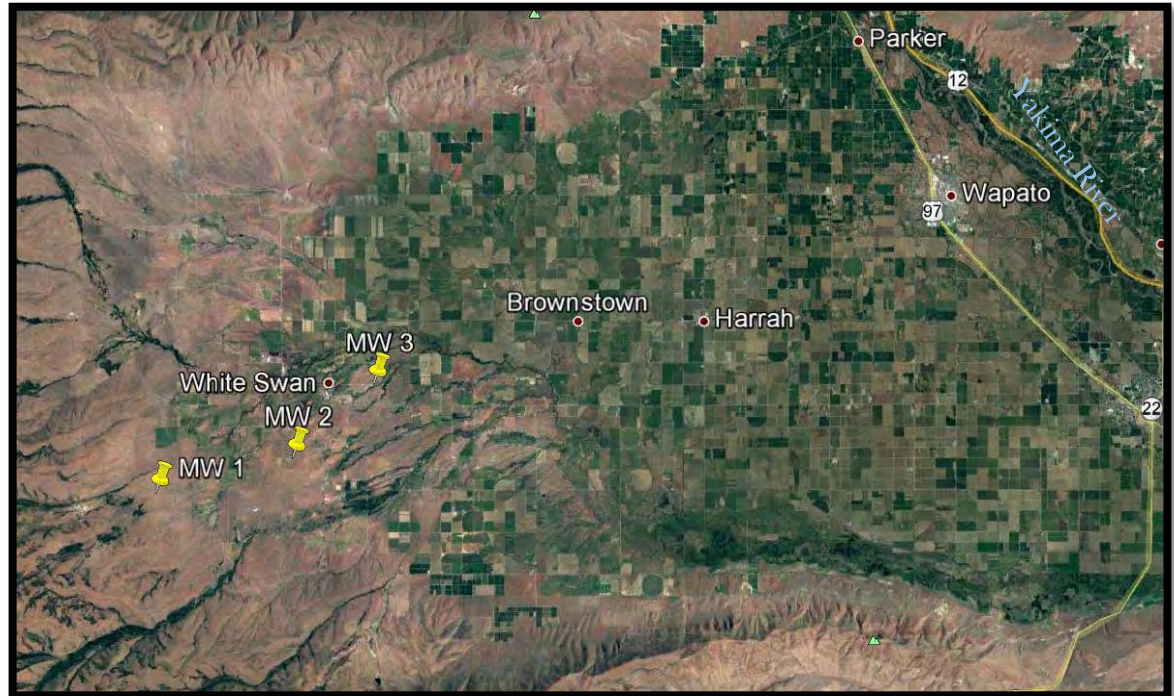


Ground Water Storage



Toppenish Fan Ground Water Storage

- Coordination with Yakama Nation, Ecology and PNRO Reclamation
- 3 new monitoring wells (MW)
- Drilling/install July 2018
- Data used to understand ground water and surface water dynamics

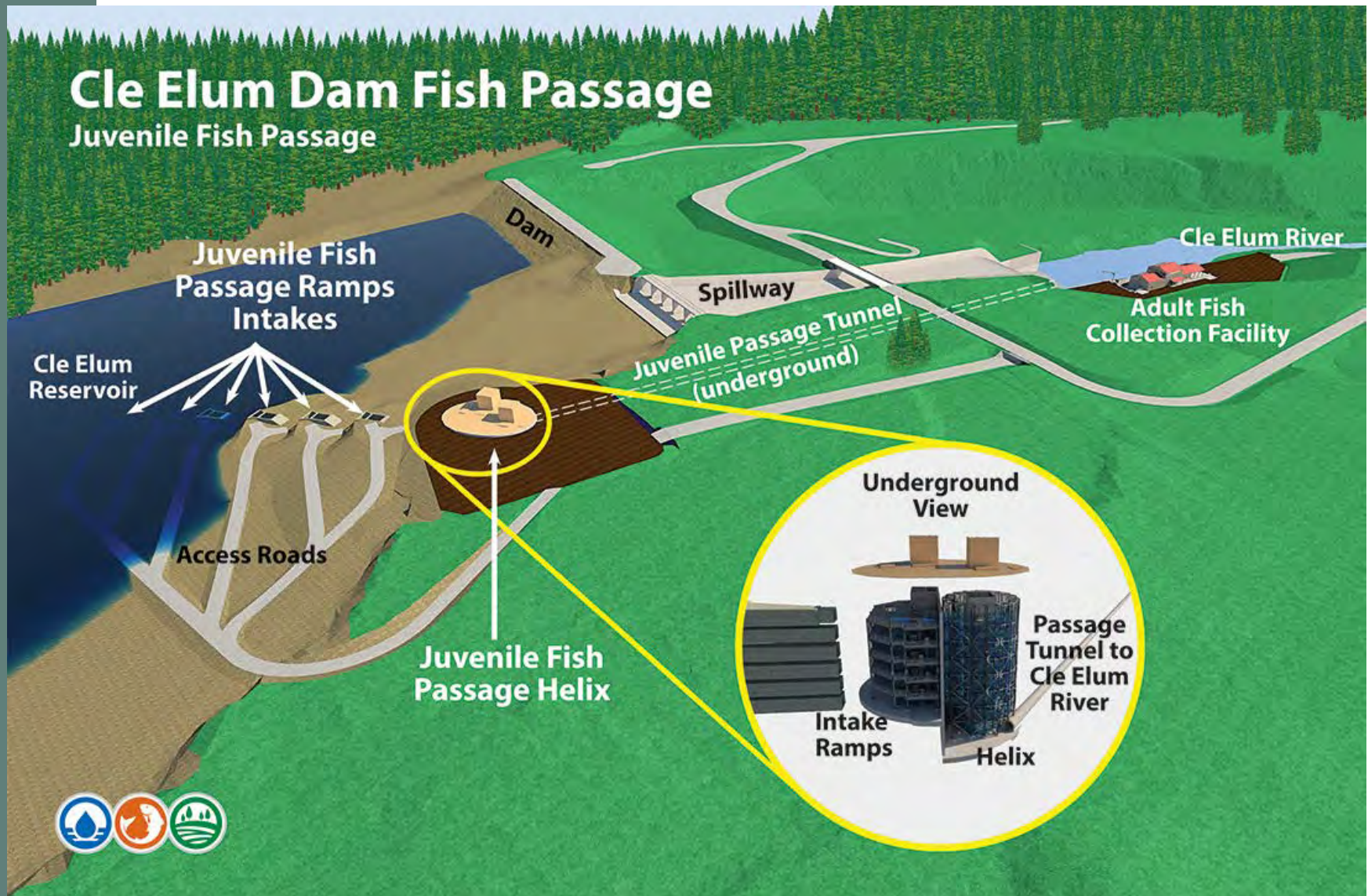


Cle Elum Dam Fish Passage Facilities

Reservoir Fish Passage



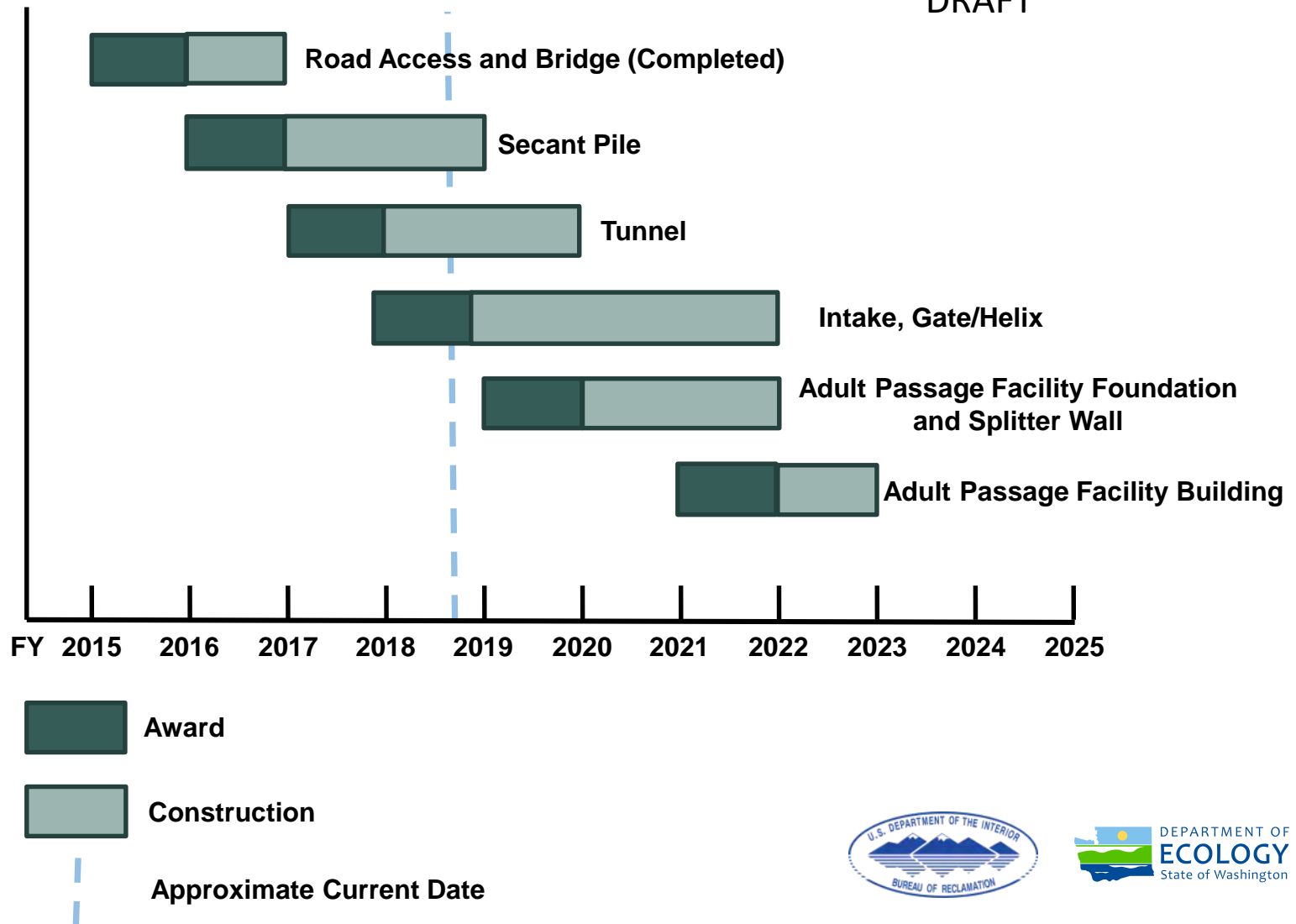
Cle Elum Dam Fish Passage



Cle Elum Dam Fish Passage Facilities Construction

Multiple Contracts Timeline

DRAFT



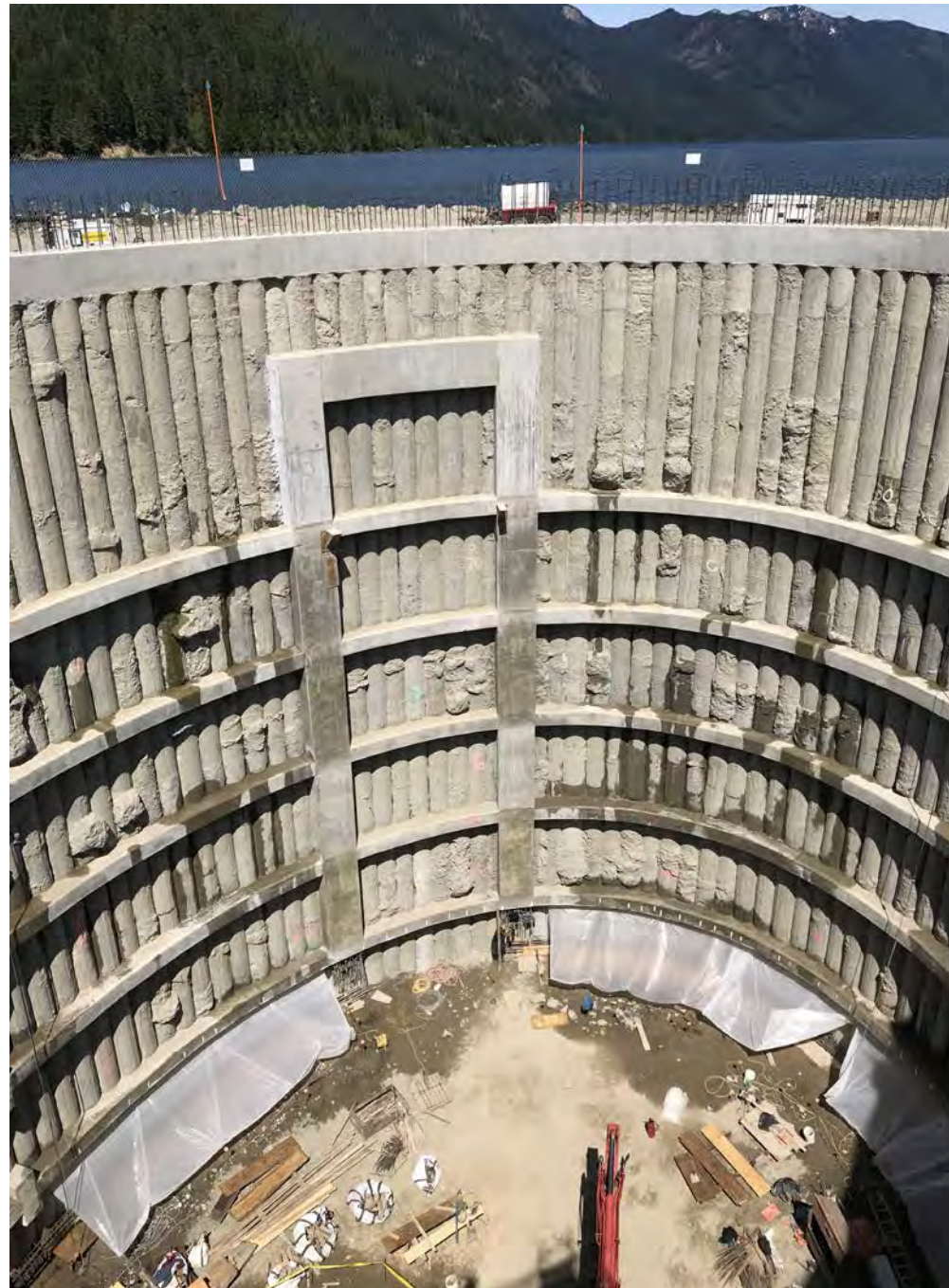
Secant Pile With Completed Cap Beam



Secant Vault

06/05/2018

- Intake Frame
- On Waler 6 of 7
- At 80 Feet
- Last Waler at 87'
- Secant Floor at 97'



Waler Rebar Work and Forming for Concrete Placement



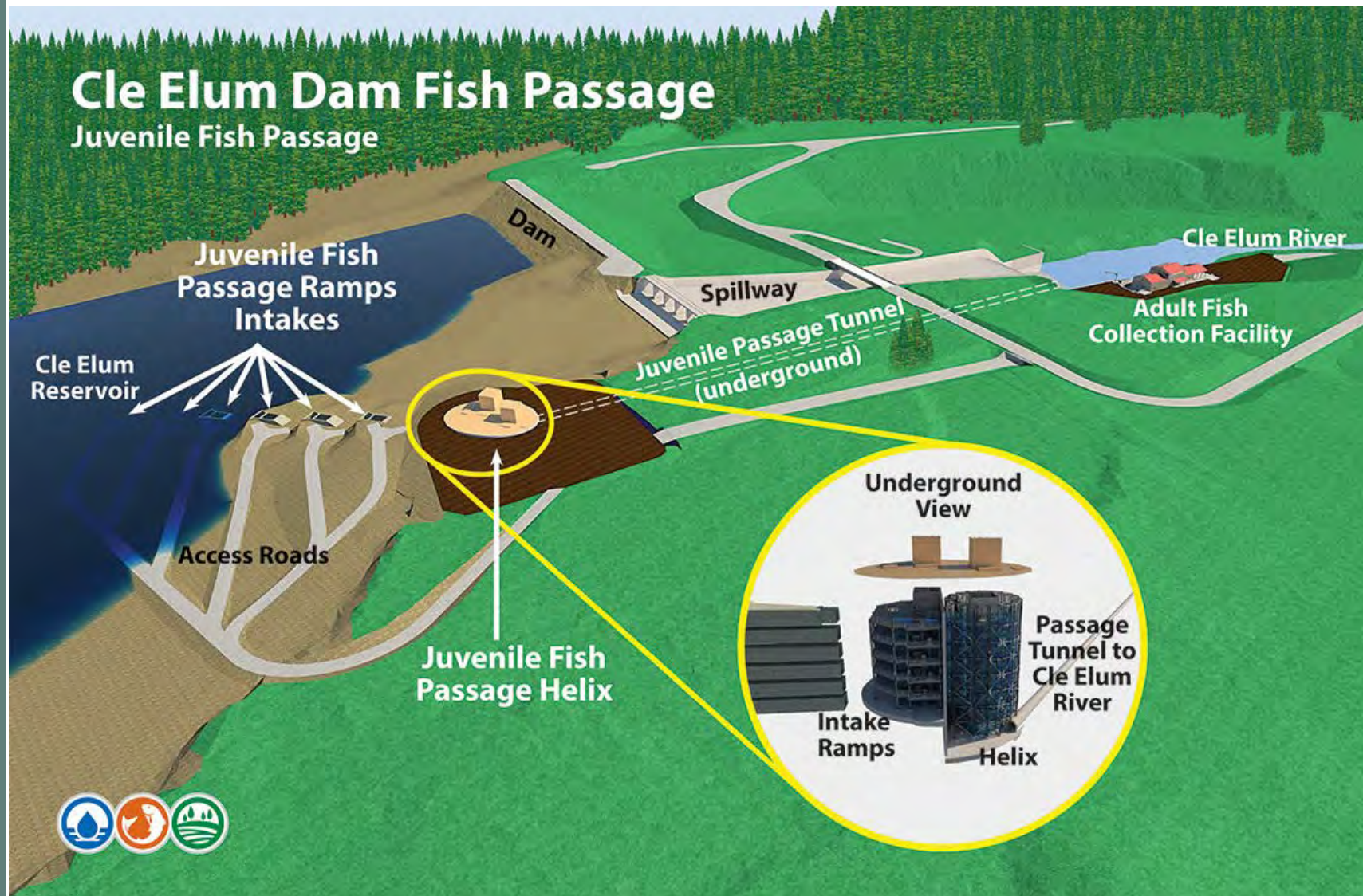
Placing Concrete



Intake Frame Forming & Placing Concrete



Tunnel Construction Status



Fill Removal and Placement 65,000 yds³



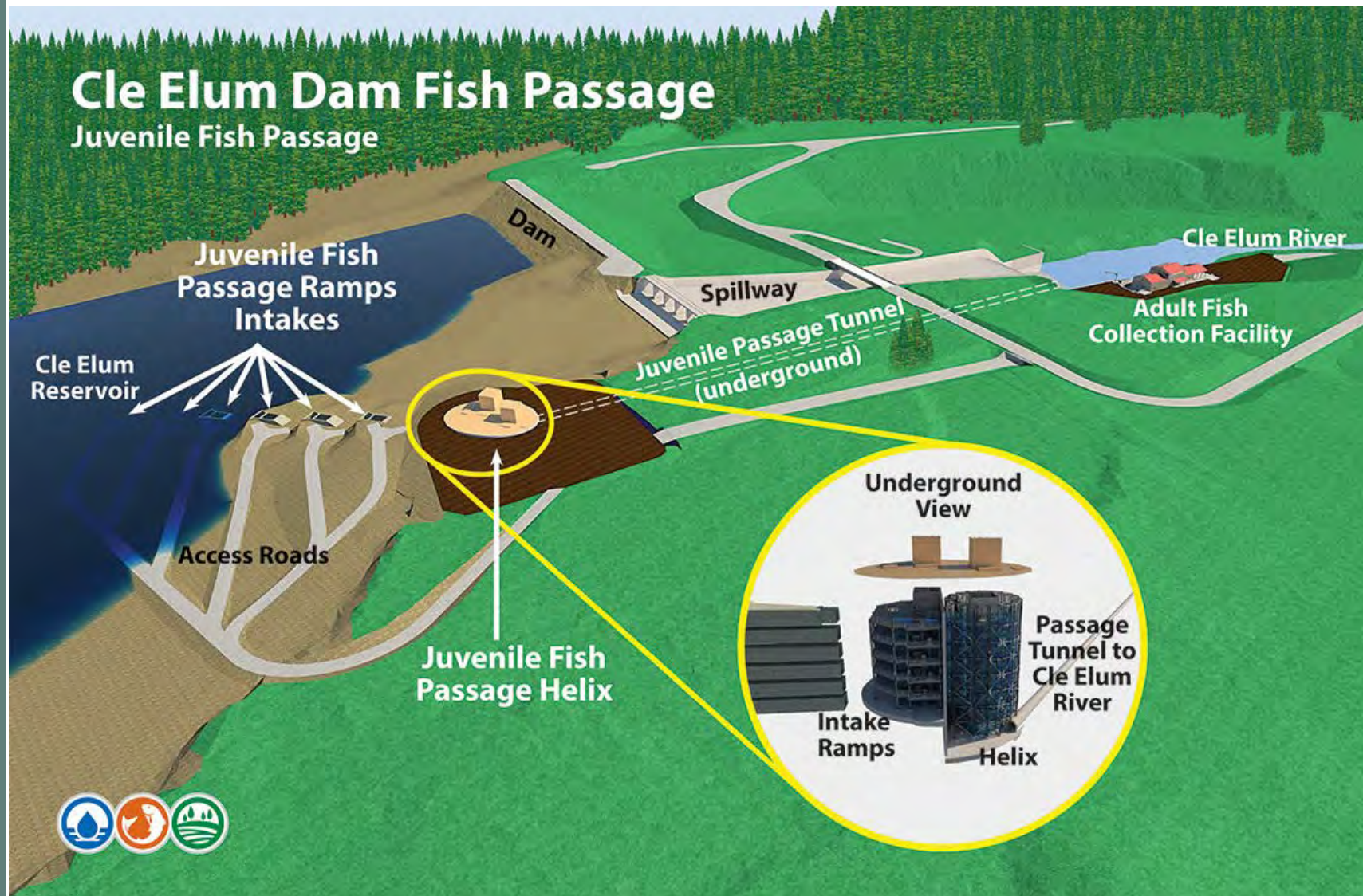
Reaction Blocks and Strand Anchors



Welded Wire Fabric and Soil Anchors



Intake, Gate and Helix Update



Intake, Gate and Helix – Working to Award This year

- Proposal or Bid Process Underway
 - Site Visit on May 22nd
 - Contractor Proposals are Due July 6th
 - Proposal Evaluation Week of July 9th
 - Award In August/Sept. 2018
- Funding News
 - Reclamation Awarded 3.5 Million Additional Capability Funding



2013 - First Sockeye born, raised, and returned to the Yakima River Basin in over 100 years

Update on 2018 Sockeye testing – Roza to Cle Elum



Questions?

For further information on the web:

<http://www.usbr.gov/pn/programs/yrbwep/2011integratedplan/>

<http://www.ecy.wa.gov/programs/wr/cwp/YBIP.html>

