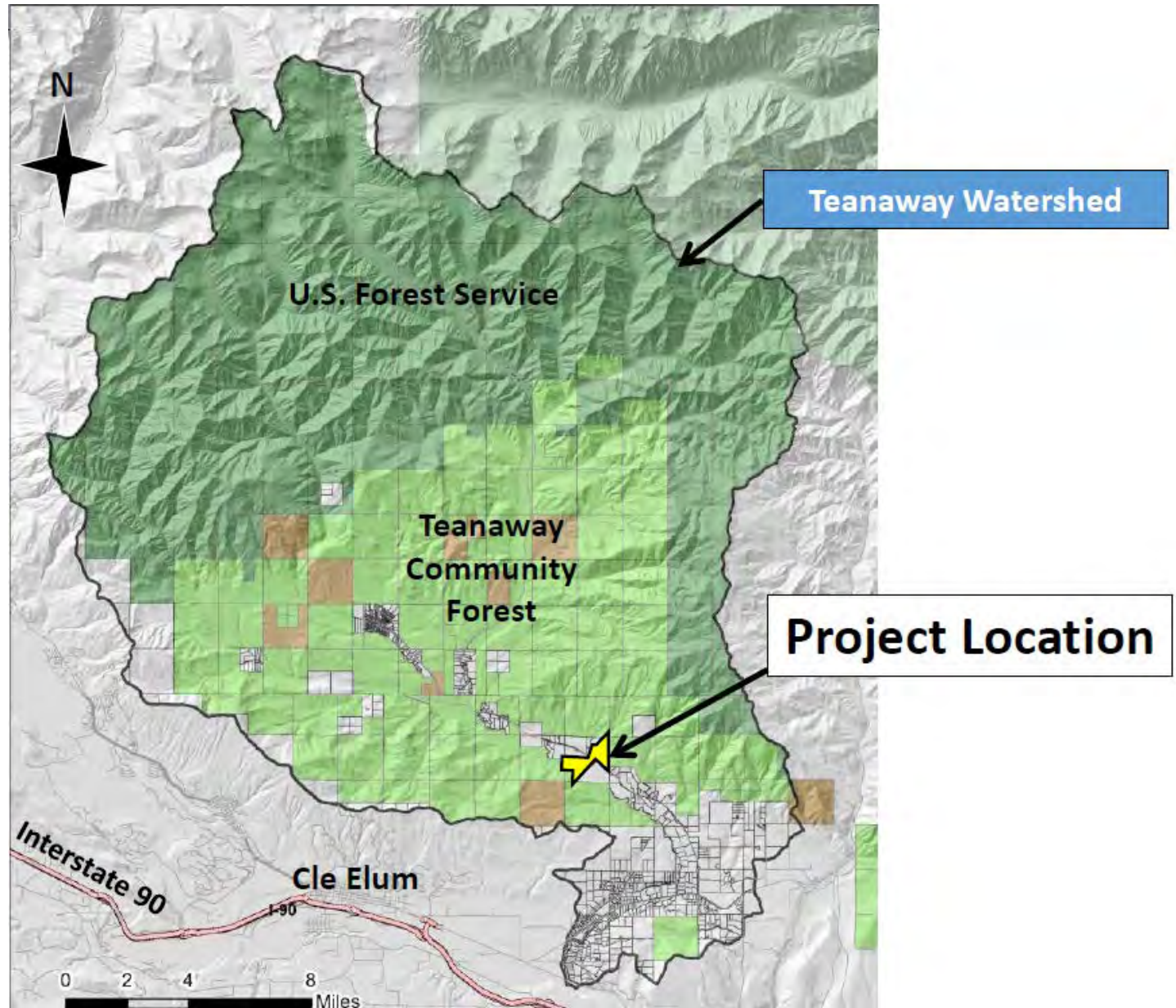
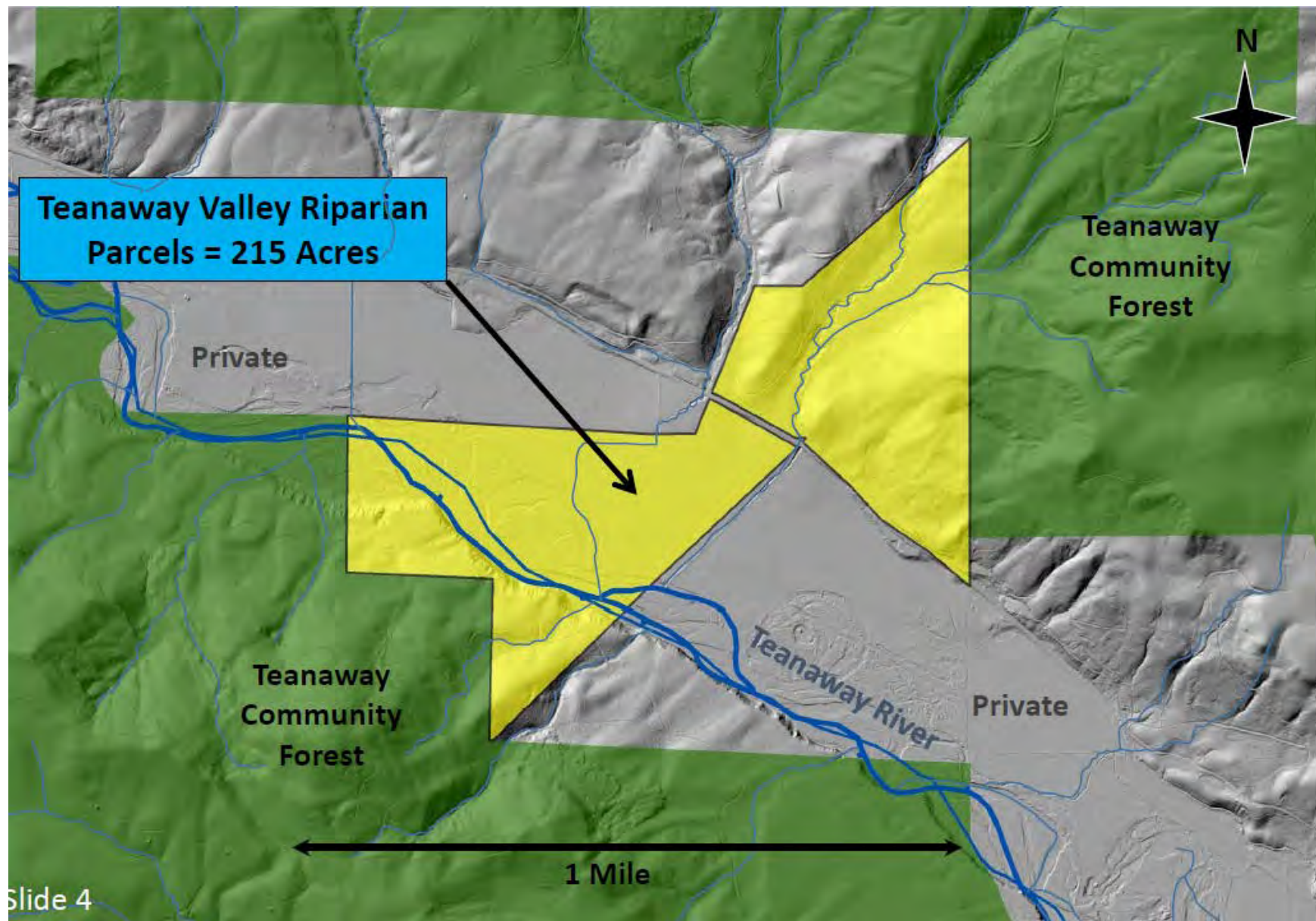


# Teanaway Valley Family Farm



# Teanaway Valley Family Farm



# **Teanaway Valley Family Farm**

## **Watershed, Habitat, Recreation Benefits**

- Conserves 215 acres, 117 acres Total Riparian (54%) & 98 acres upland
- Protects 2 miles for streams & Teanaway River (37 acres)
- Protects 20 acres of wetlands
- Conserves 60 acres of active floodplain
- Complements \$100 million investment for watershed and fish
- Key location for access into the Community Forest

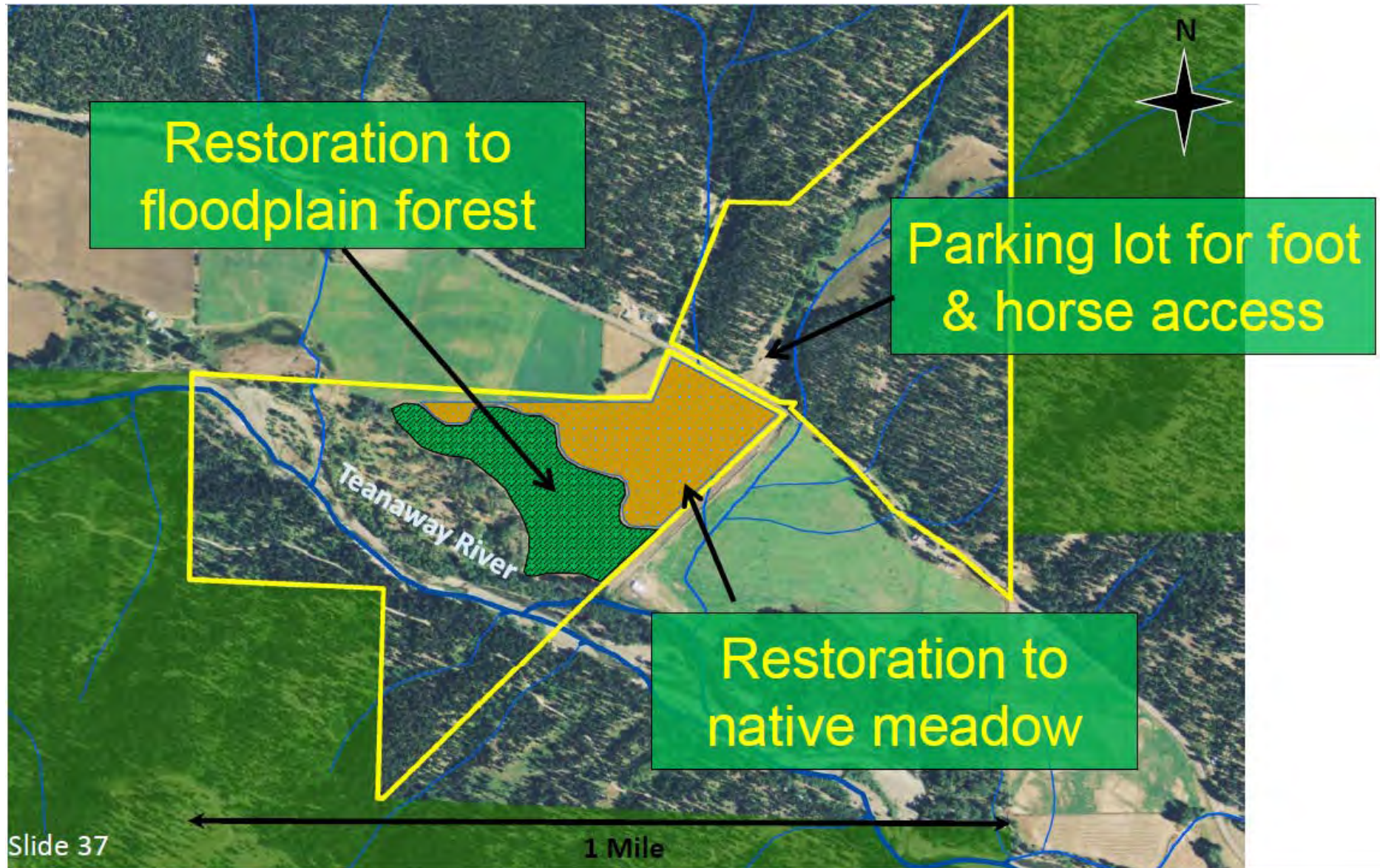
# Teanaway Valley Family Farm



## Funding Mix

- USFS – Section 6 Grant to WDFW
- Kittitas County
- Dept. Of Ecology – Yakima Basin Integrated Plan
- Trust for Public Land – Private Donation

# Teanaway Valley Family Farm



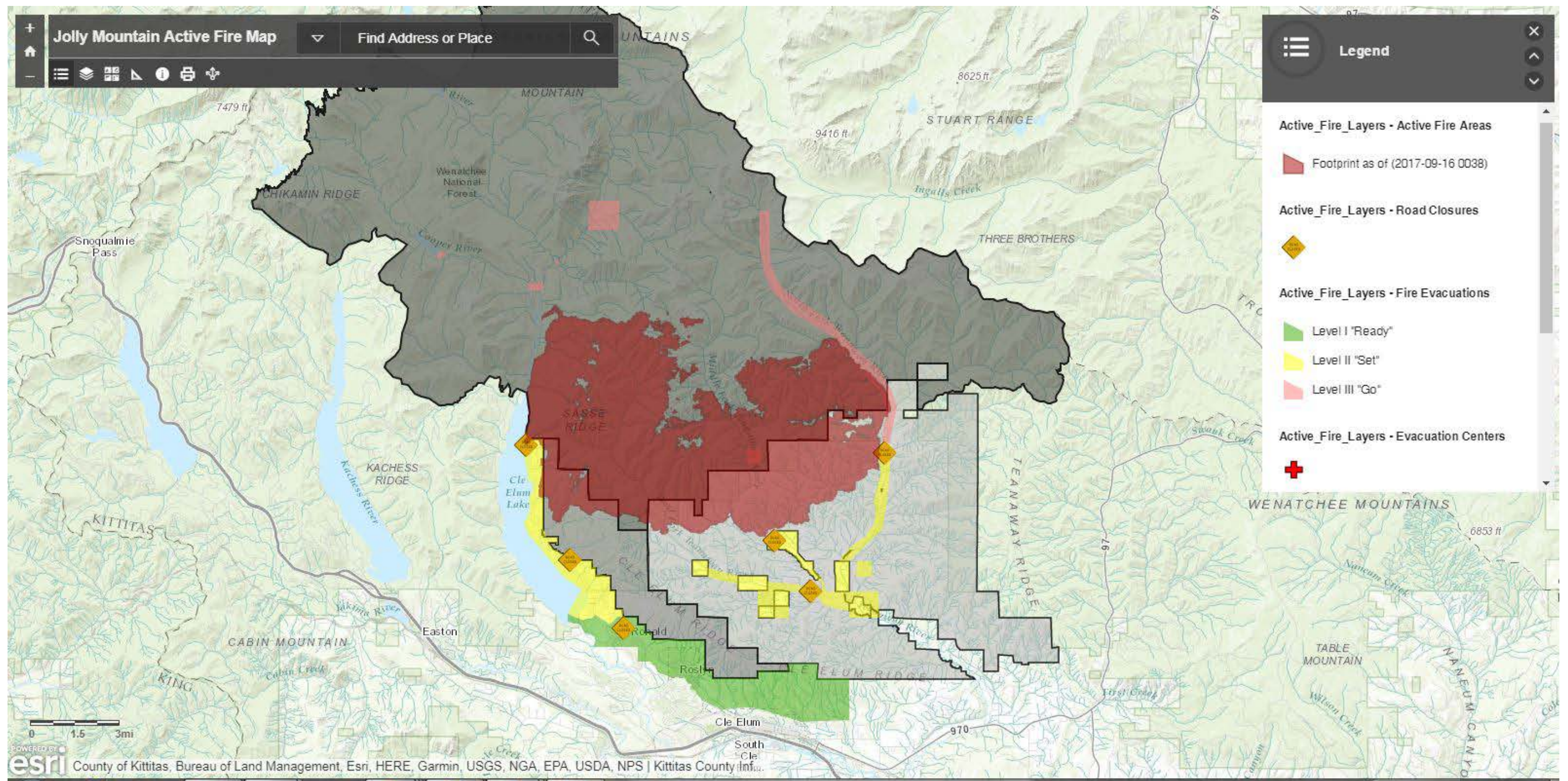
## Examples of Grazing Fences in the Teanaway Community Forest











Jolly Mountain Active Fire Map