

Kittitas County

Kittitas County's Rural Water Program

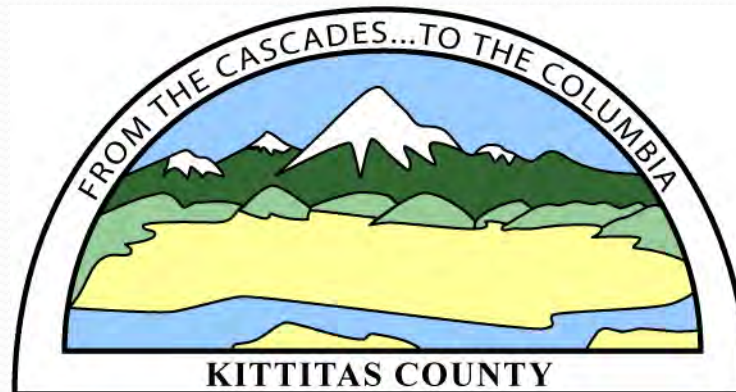
Five Components:

1. Regulations requiring mitigation for all new uses of ground water in the Yakima River Basin.
2. Water banks.
3. Over-the-counter program.
4. Metering program.
5. Current user mitigation (back mitigation).

County Regulations

Two Steps:

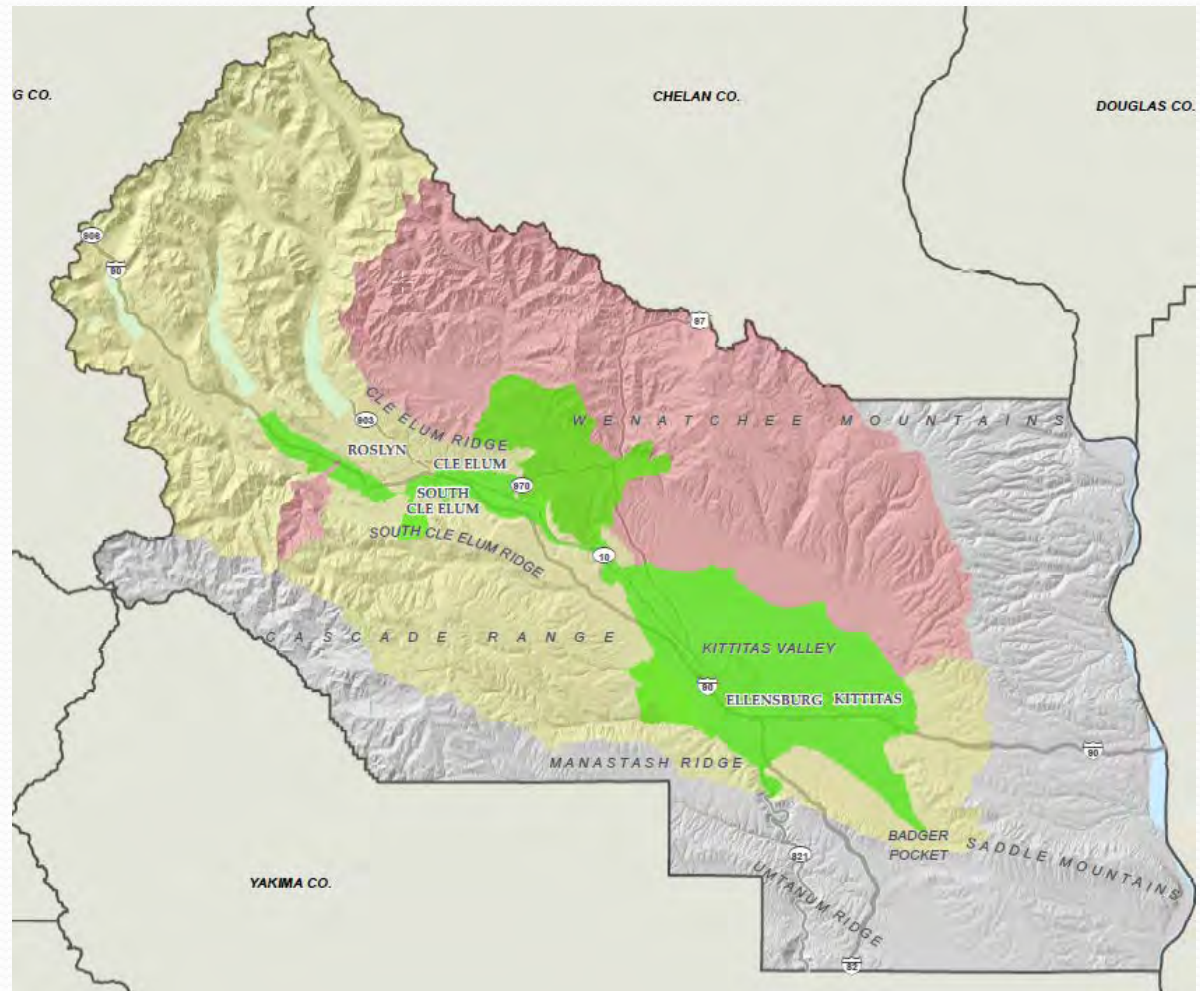
1. Interim Measures - KCC 13.35.025
2. Permanent Measures - KCC 13.35.027



Water Banks

Two Types:

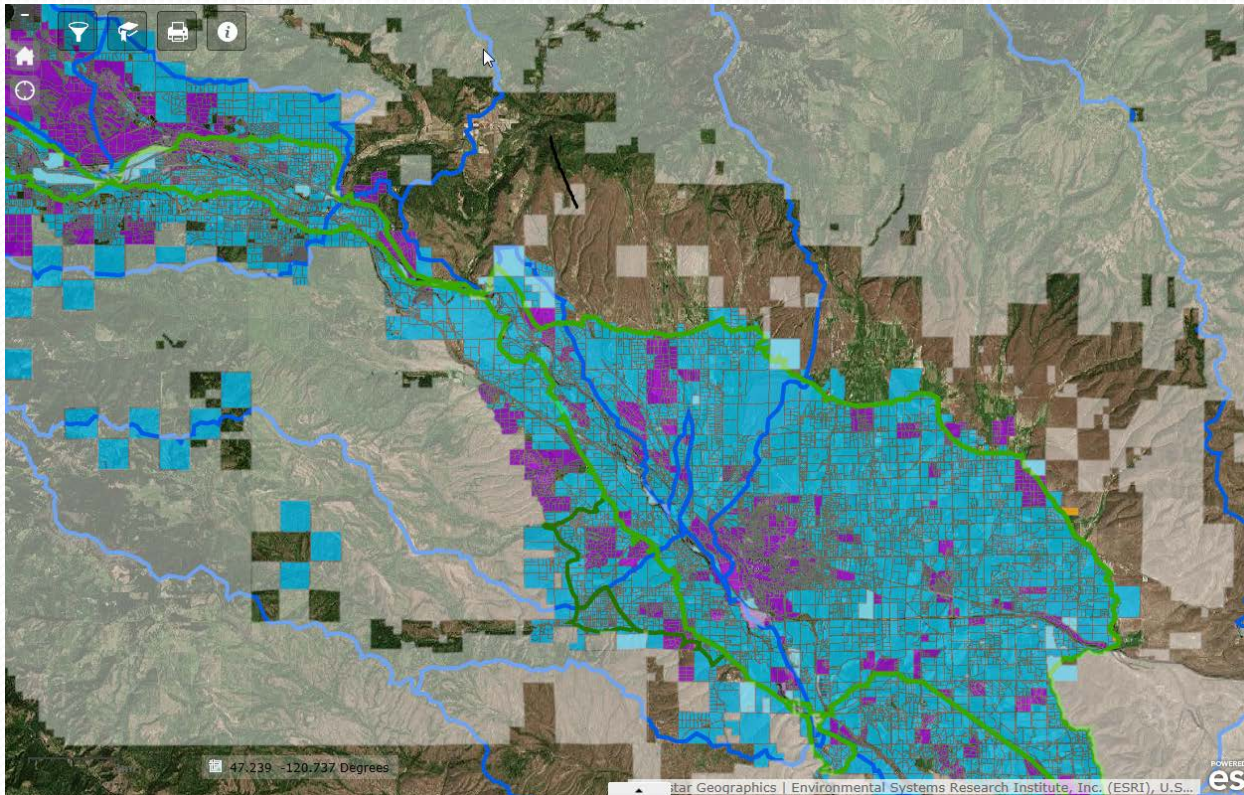
1. Private
2. County-owned



Over-the-Counter Program

Two Types of Approvals:

1. Water-budget neutral (WBN) certificates
2. Water Right Permits



Metering Program

KCC 13.40.030 – Participants in the Kittitas County Water Bank will be required to meter their mitigated water usage and pay an annual fee.



Current-User Mitigation Program



YBIP Goals

- Enhanced Water Conservation
- Market Reallocation
- Habitat/Watershed Protection & Enhancement

