




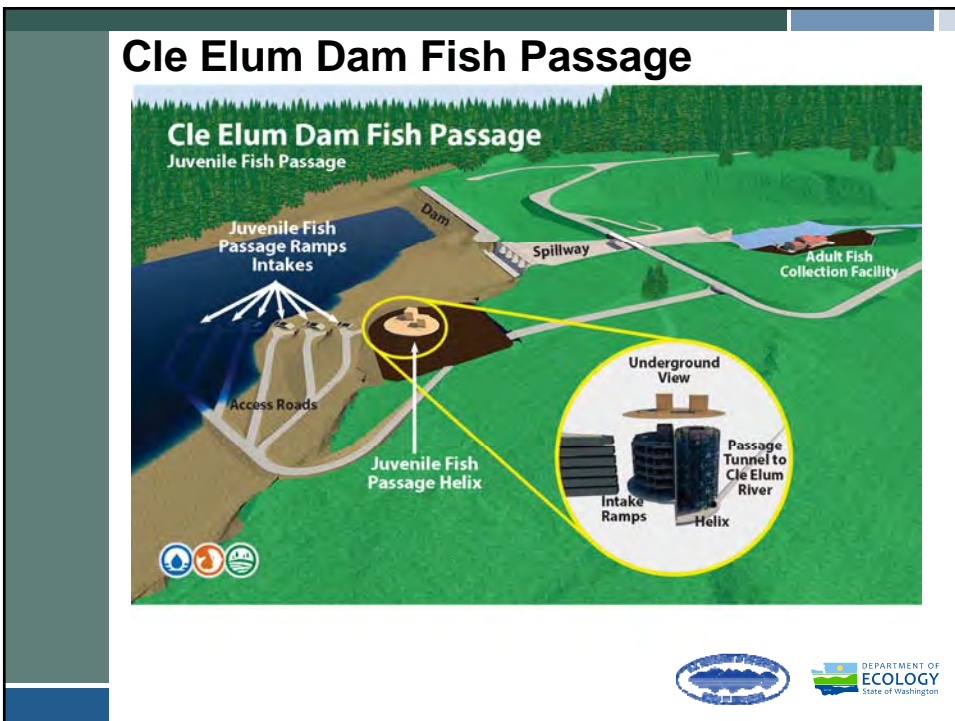
Yakima River Basin Integrated Water Resource Management Plan – YRBWEP Workgroup Update

September 22, 2016



Presented by:
Walter Larrick, Bureau of Reclamation
Teresa Merriman, Bureau of Reclamation



Cle Elum Dam Fish Passage Construction - Schedule

- Phase 1 construction contract awarded July 2015.
- Phase 1 construction of roads and bridges in progress.
- Phase 1 scheduled to be completed in Fall 2016
- Award Phase 2, Secant Pile – July 2016.



Cle Elum Dam Fish Passage Construction



Cle Elum Dam Fish Passage Construction



Trees being stacked



Cle Elum Dam Fish Passage Construction



Northern Access Road



Northern Access Road Entrance



Cle Elum Dam Fish Passage Construction



Northern Access Road



Northern Access Road



Cle Elum Dam Fish Passage Construction



Southern Access Road to Collection Facility



Temporary Bridge In Place



Cle Elum Fish Passage - Adult Facilities Whooshh Fish Transport System

- Moves fish through a flexible conduit, using pressure differentials to either push or pull the fish through the tube
- The Yakama Nation in cooperation with Reclamation, is working with Whooshh Innovations to test the technology for the Cle Elum Fish Passage Project at Roza Dam, June 2016
- Initial indications are that this technology is economical and fish friendly
- <http://www.whooshh.com/fish-passage.html>



Cle Elum Fish Passage- Adult Facilities Whooshh Fish Transport System at Roza





Cle Elum Pool Raise

- Modify radial gates
- Shoreline protection
- Land acquisition



Cle Elum Pool Raise

- **Final EIS; Record of Decision signed June 2015**
- **Radial Gate Modification**
 - Awarded contract in September 2015
 - Construction ongoing
- **Shoreline Protection**
 - Preparing bid packages
 - Continued coordination with USFS and landowners
 - Award contract 2017



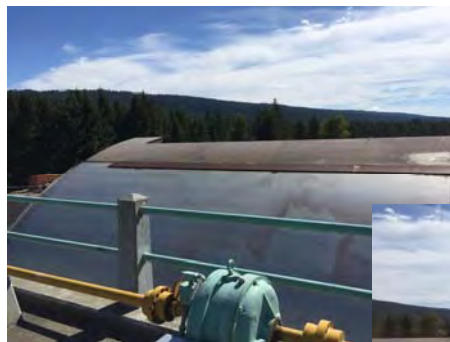
Cle Elum Pool Raise Construction

Working on north side arm, bay 4



DEPARTMENT OF
ECOLOGY
State of Washington

Cle Elum Dam Pool Raise Construction



DEPARTMENT OF
ECOLOGY
State of Washington

Kachess Drought Relief Pumping Plant Floating Pumping Plant Alternative SDEIS

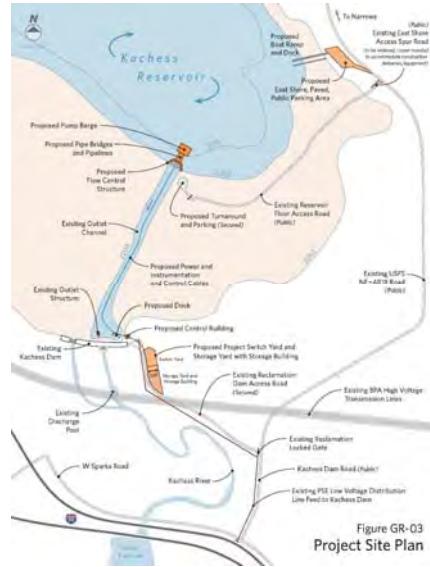


Figure GR-03
Project Site Plan



Kachess Reservoir October 2015



FBEL= 2207, 40 KAF

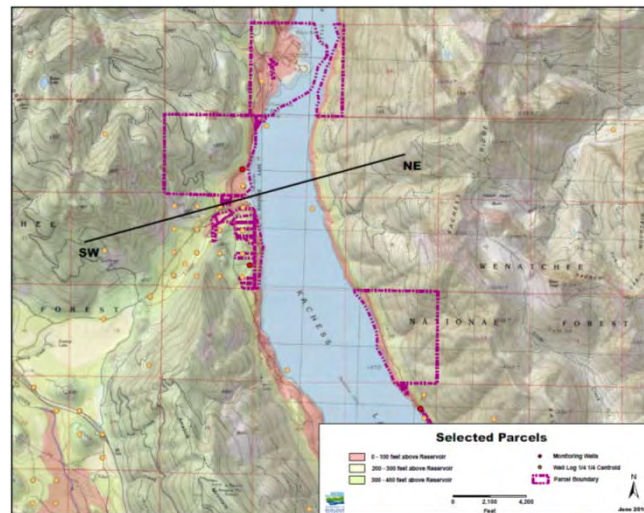


K-Projects Updates for SDEIS

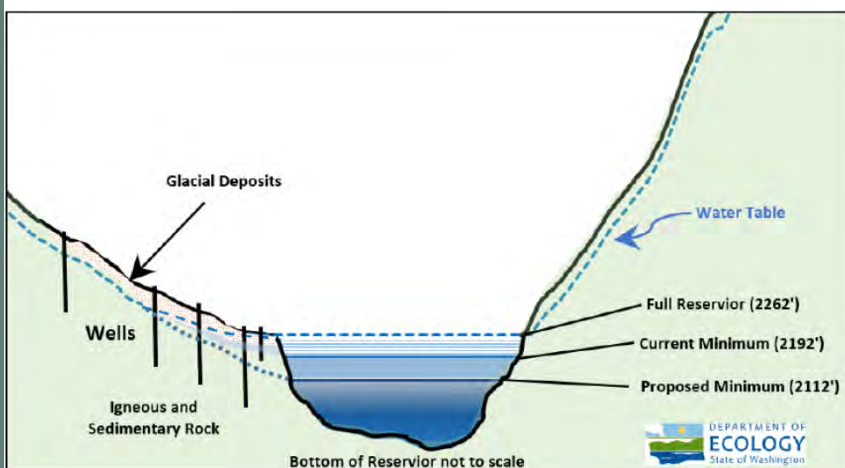
- Kachess Floating Pumping Plant Alternative
- Recreational Access (Recreation)
- Hydrologic Modeling (Surface Water Resources and ESA)
- Limnology Data Collection/Report (ESA)
- Groundwater Monitoring (Groundwater)
 - Parcel Owners Meeting
 - Phone Call Outreach
- Power Supply Study – PSE & BPA (Utilities)
- Property values (Land and Shoreline Use)
- Kachess Reservoir Bull Trout Passage Appraisal Report (ESA)
- Wildfire and fire safety (Environmental Health and Safety)
- Climate Change



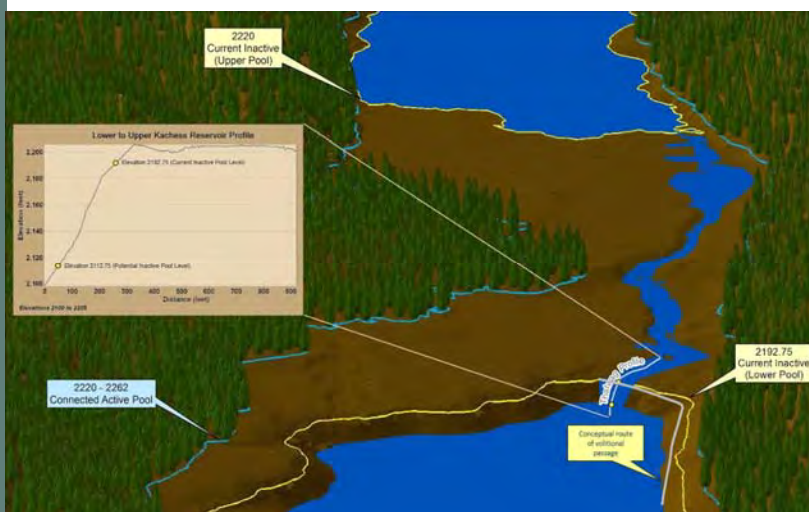
K-Projects Updates for SDEIS - Groundwater



K-Projects Updates for SDEIS - Groundwater



K-Projects Updates for SDEIS - ESA



Kachess Narrows – Roughened channel/stream

Milestones

Kachess Drought Relief Pumping Plant and
Keechelus Reservoir-to-Kachess Reservoir Conveyance Projects
NEPA-SEPA Process



THE OFFICE OF
COLUMBIA RIVER
ECOLOGICAL
MANAGEMENT

RECLAMATION
Managing Water in the West

Time not to scale



Questions?

For further information on the web:

<http://www.usbr.gov/pn/programs/yrbwep/2011integratedplan/>

<http://www.ecy.wa.gov/programs/wr/cwp/YBIP.html>



