

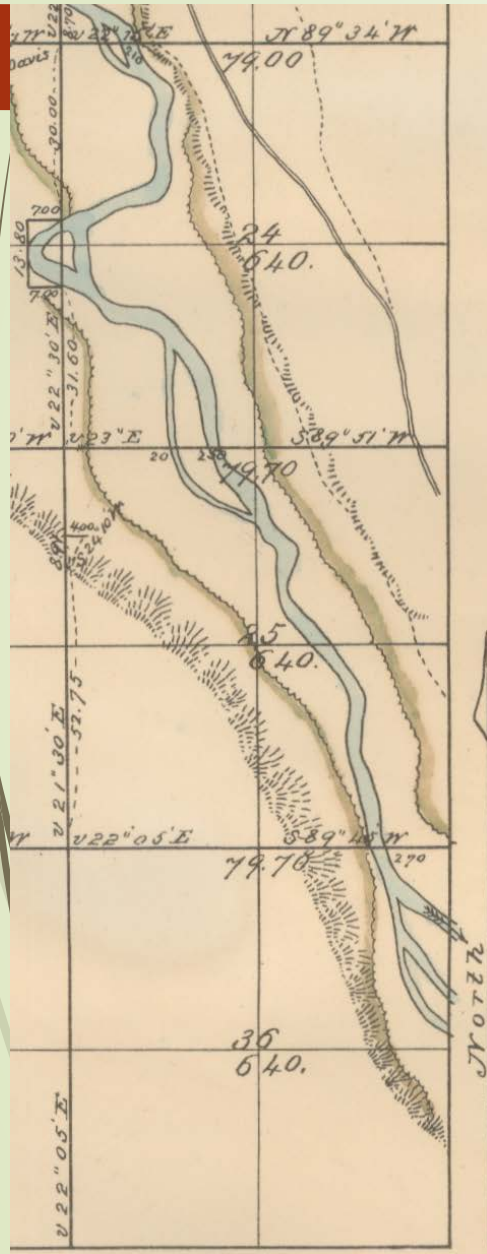
# Floodplain Restoration on the Naches and Yakima Rivers 2010-2016

Joel Freudenthal

Yakima County Flood Control Zone District

June 8, 2016

1879



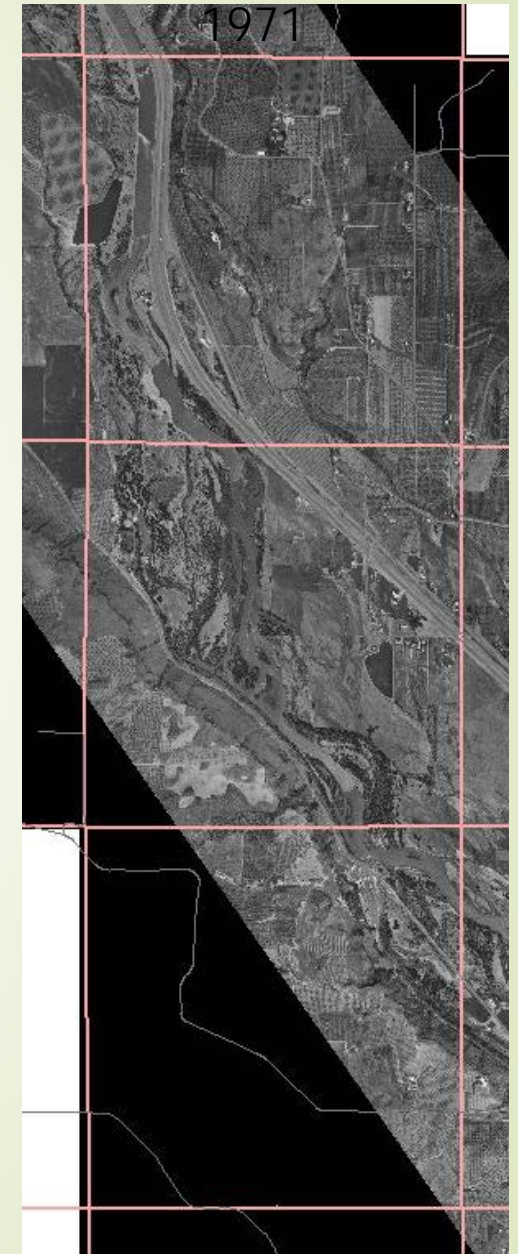
1906



1947



1971

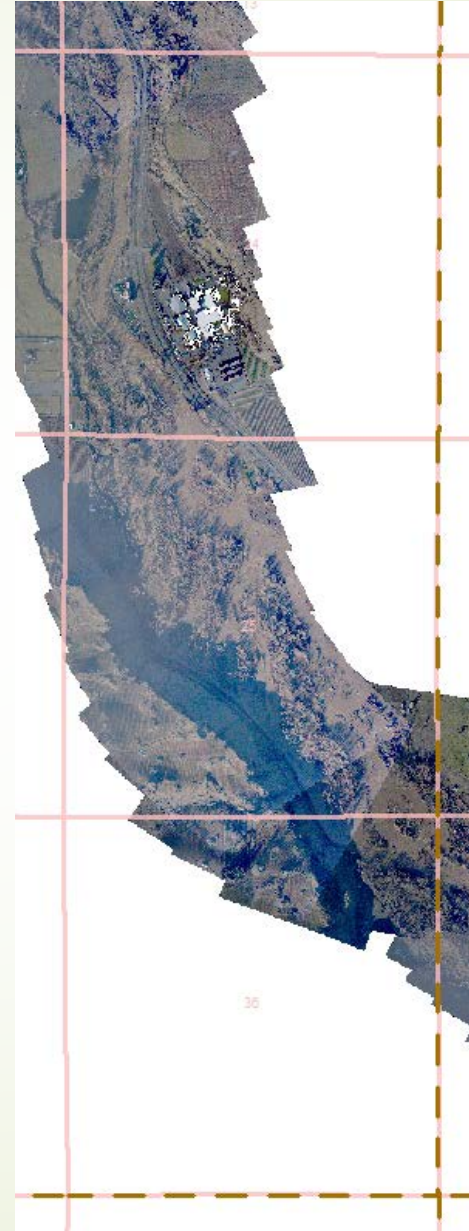




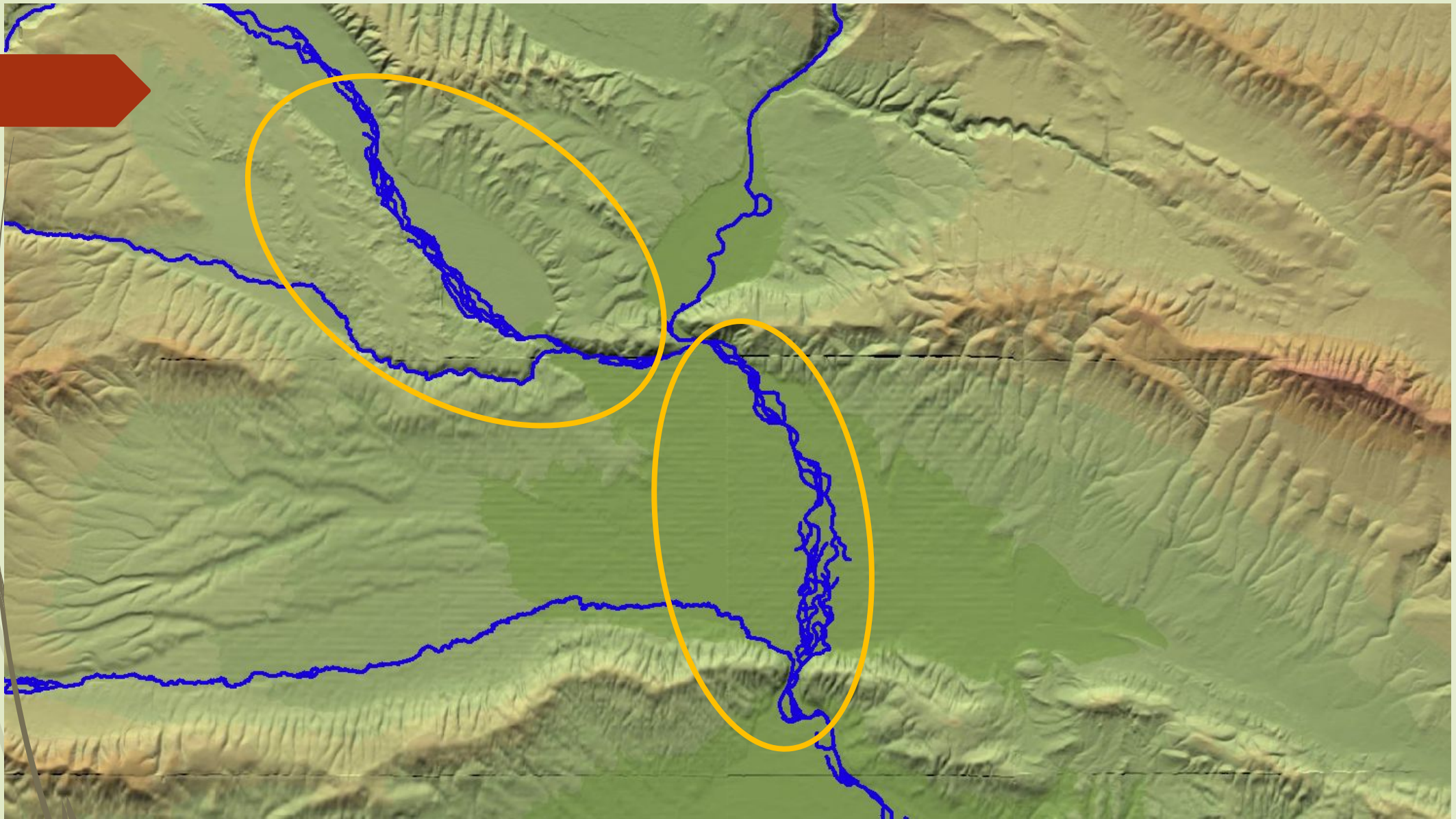
2002



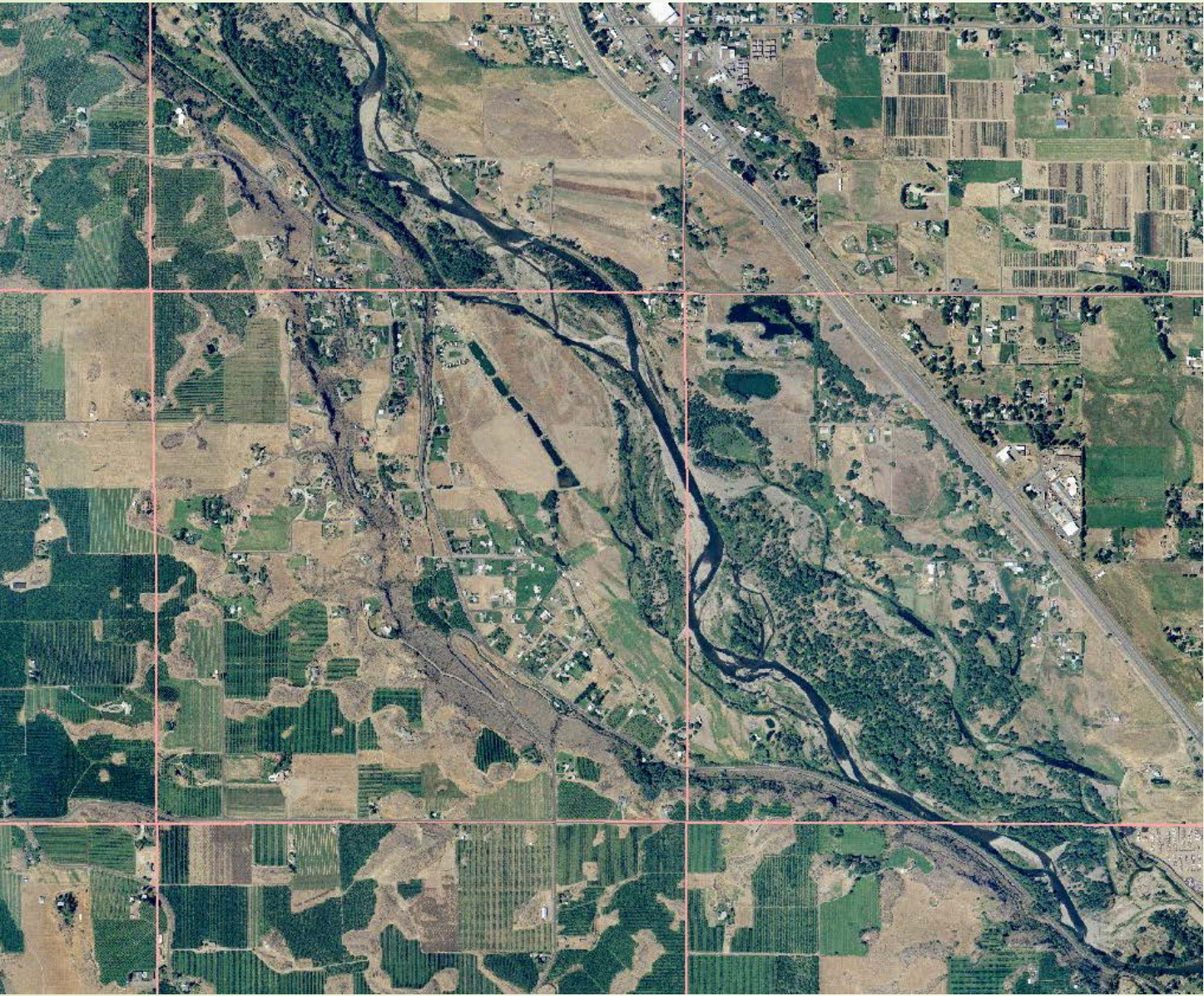
2015



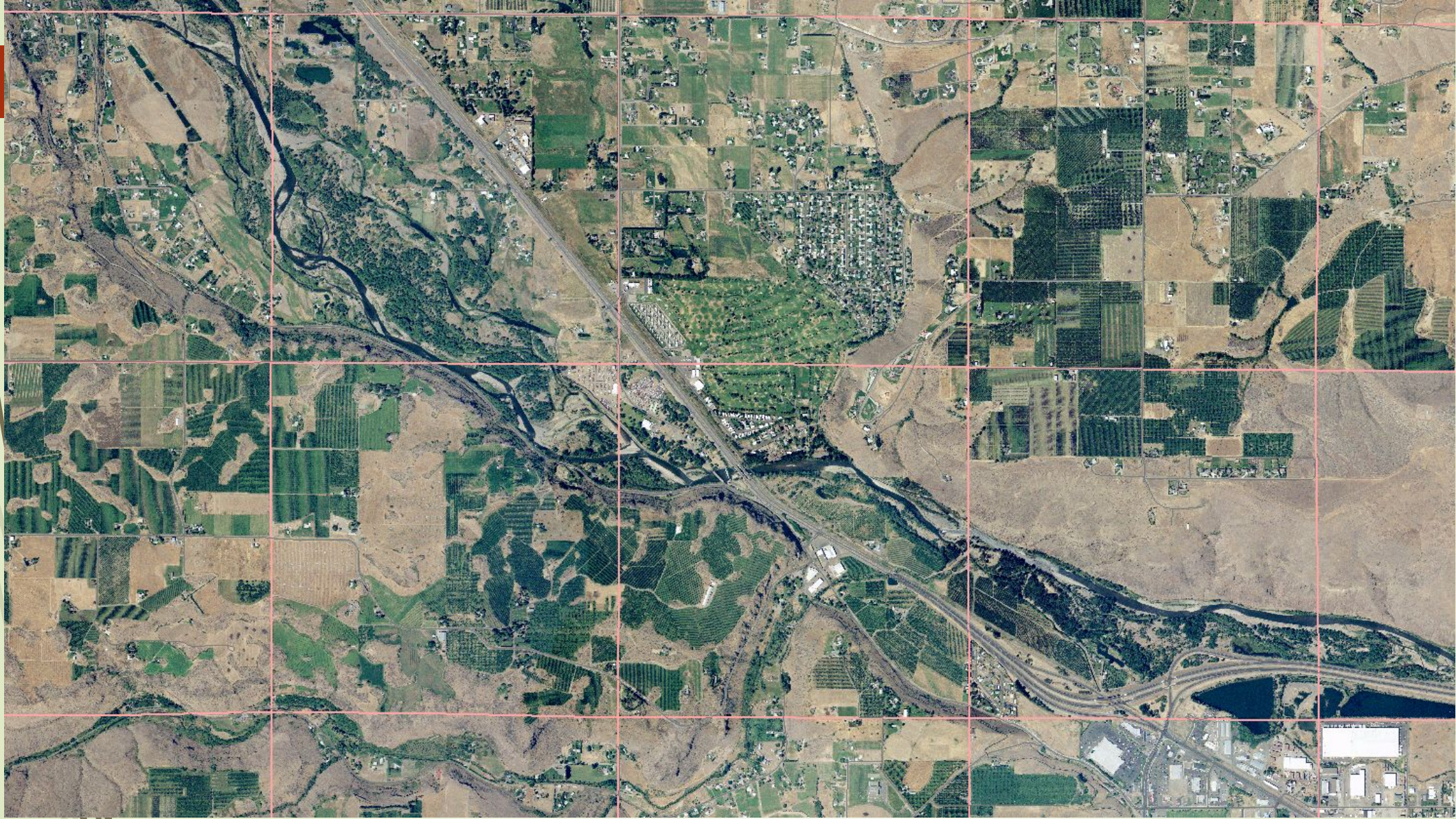












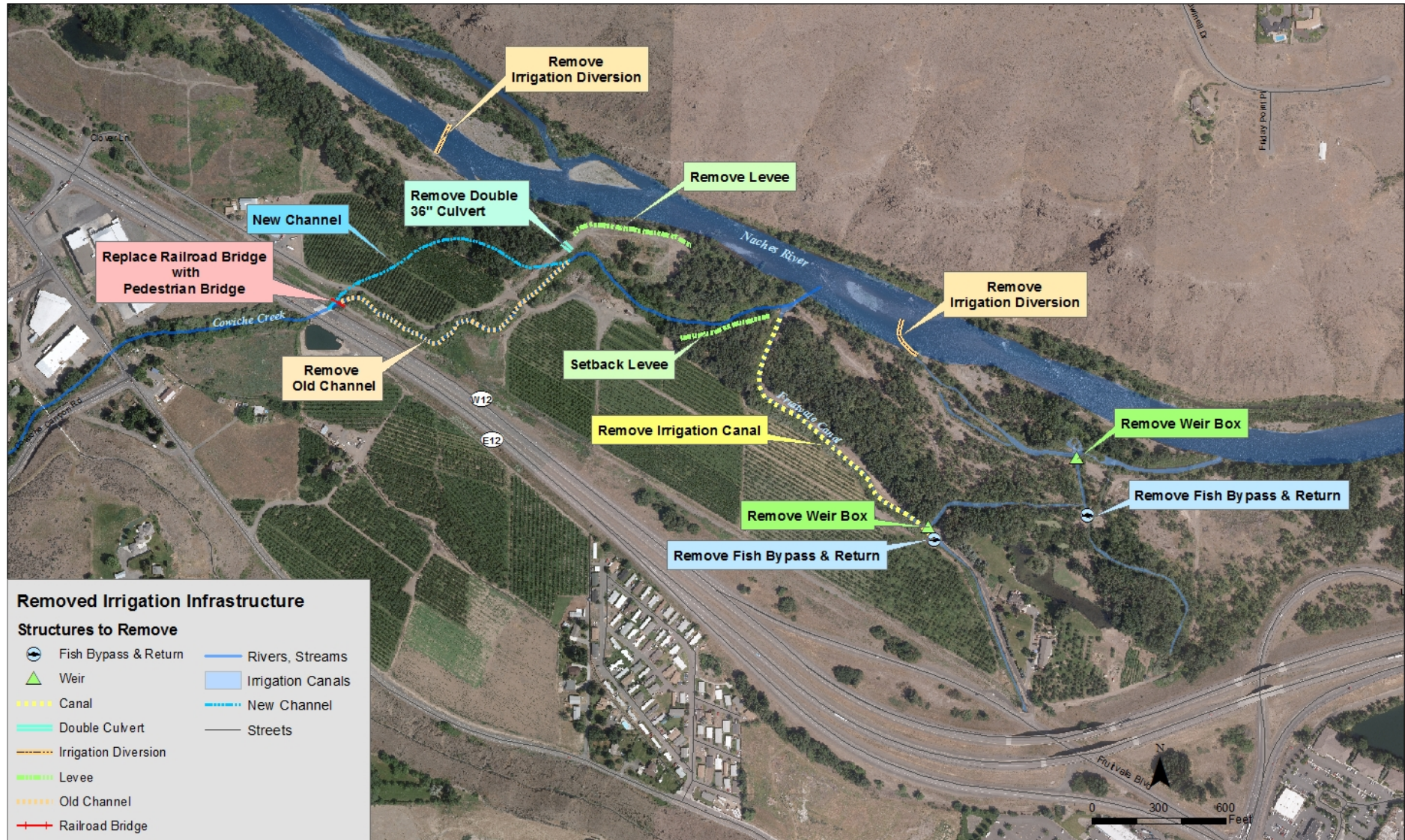


# Ramblers' Levee Failure Spring 2012

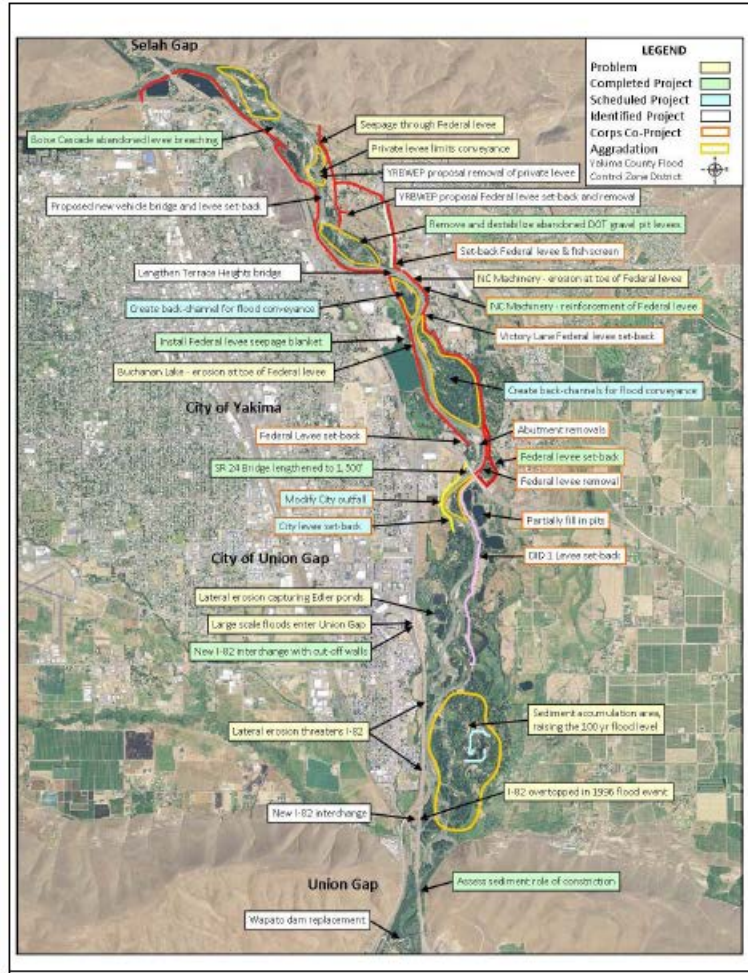
Less than 2 yr flood











Gap to Gap

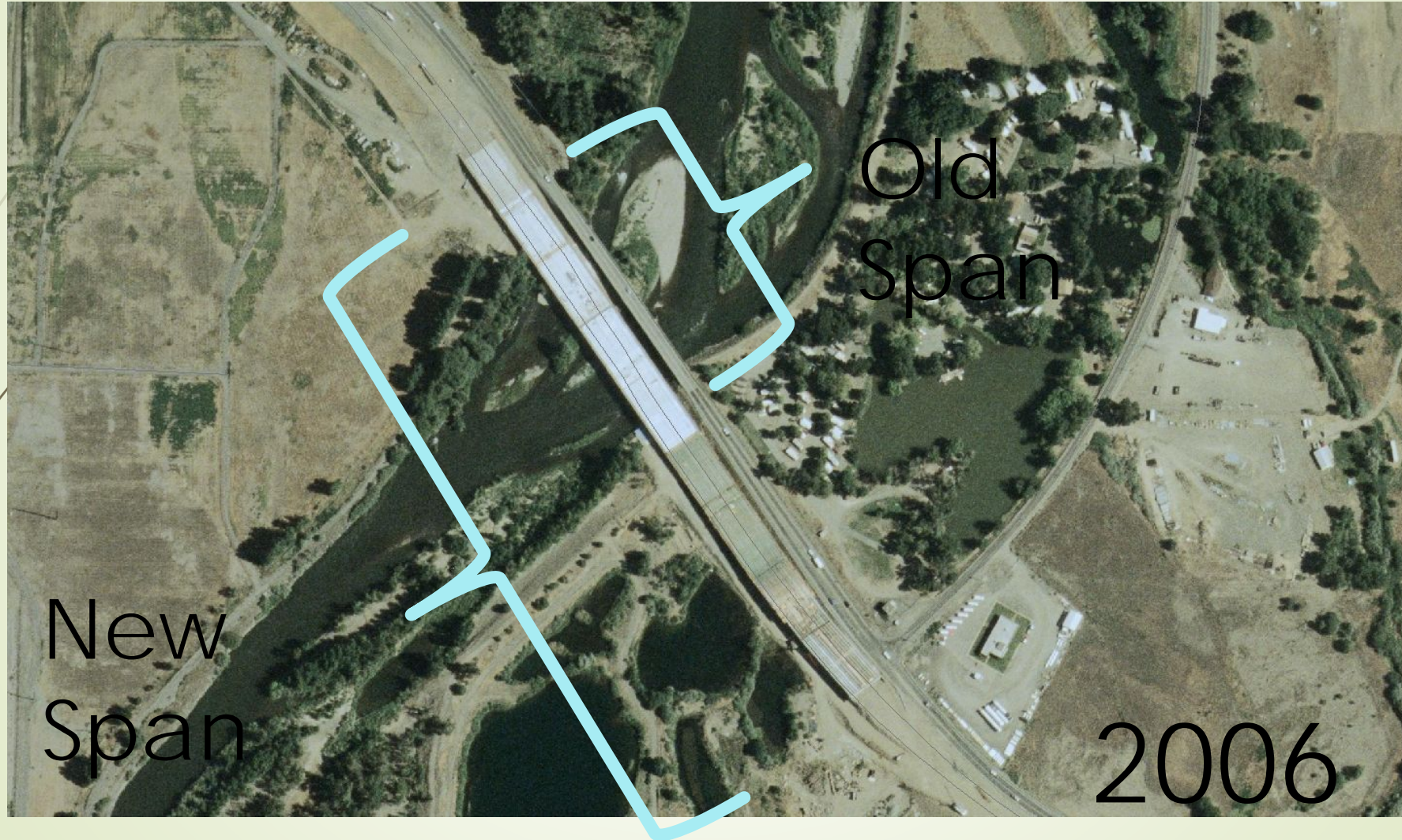
\$805K – YBIP

\$38M So Far

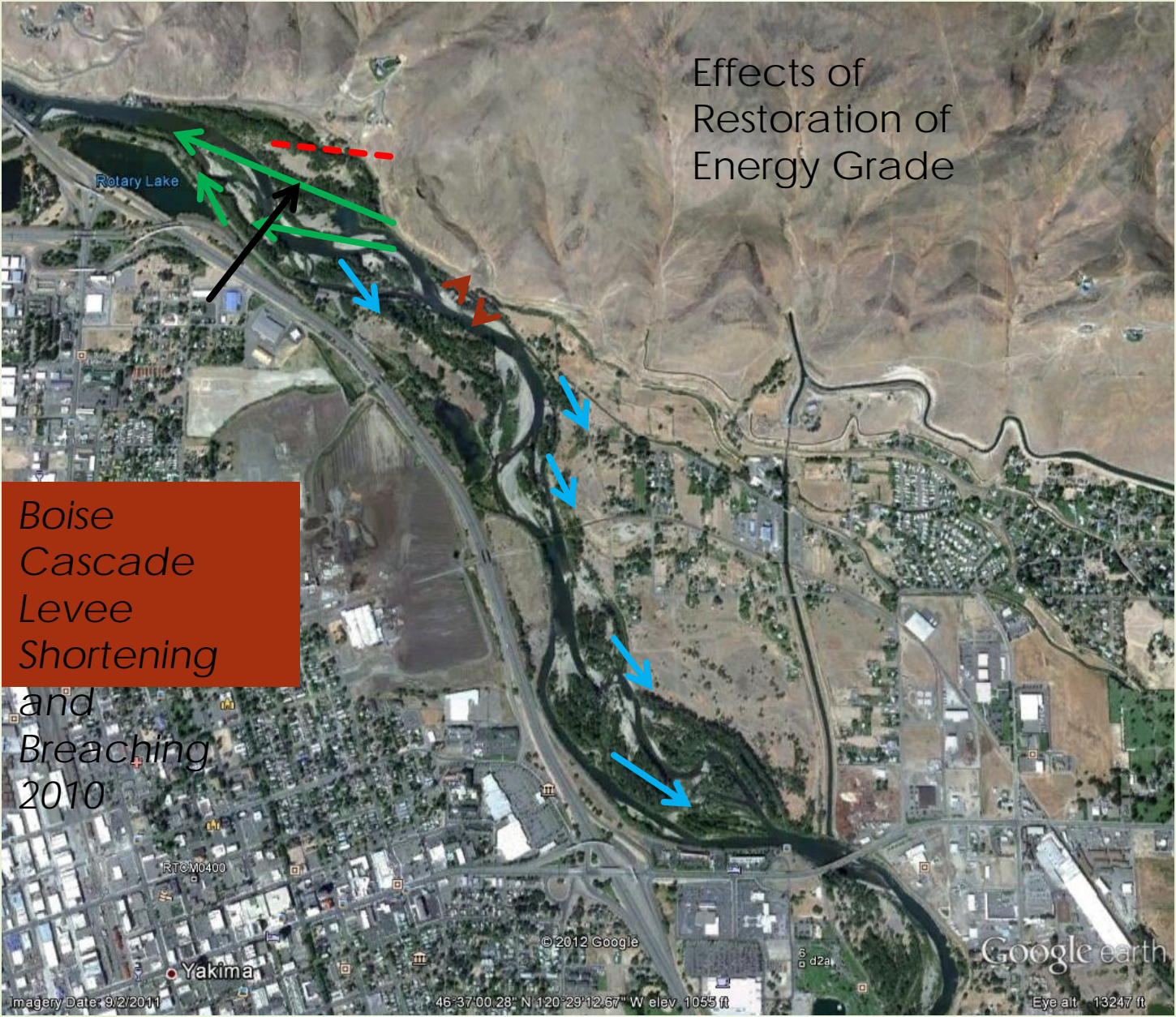
\$10M from  
Corps in 2017



# New SR24 Bridge – Additional 1000'

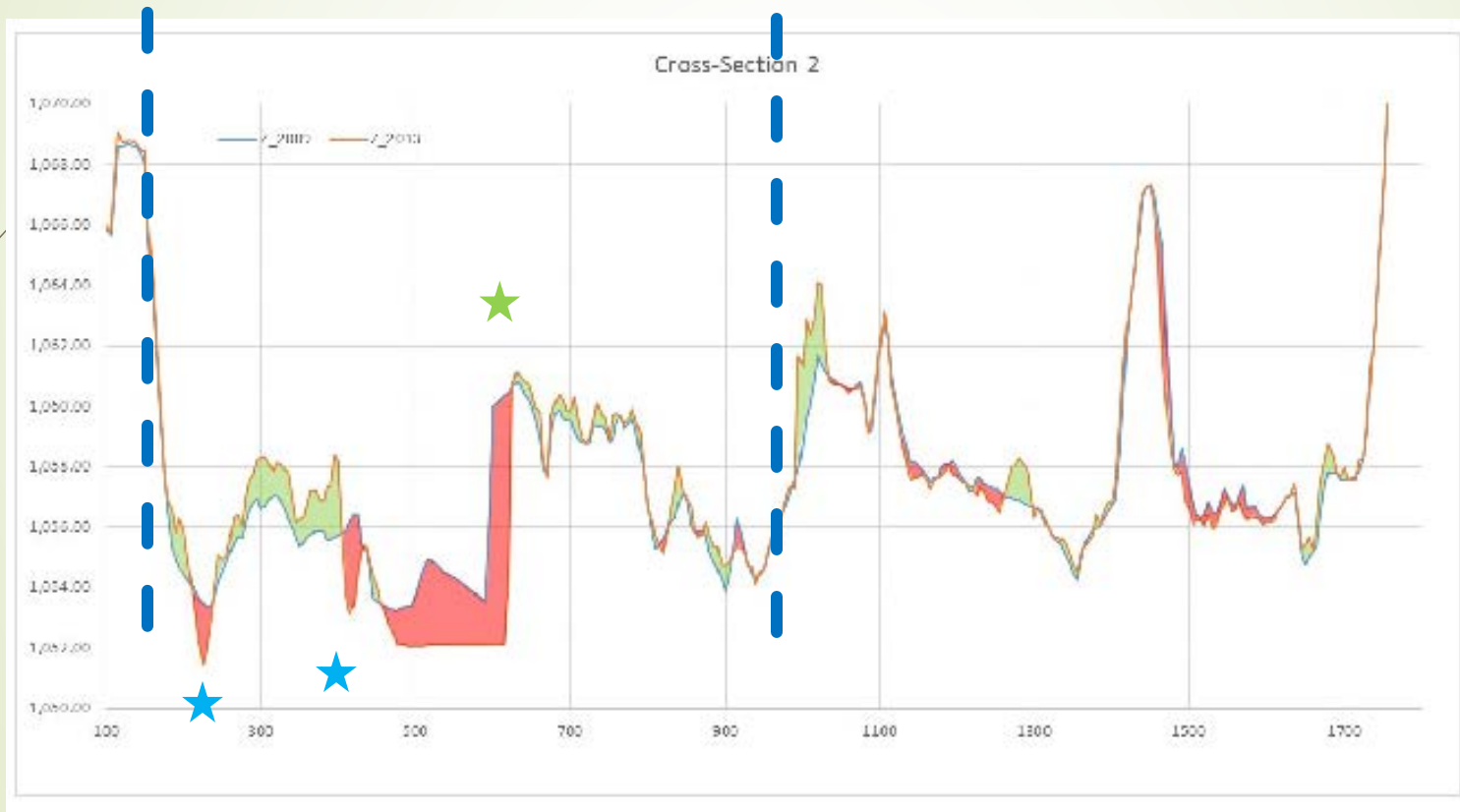








# Pre and Post Project X sections “Acceleration Channel” Downstream of Breach



Active Channel  
/Floodplain Boundary

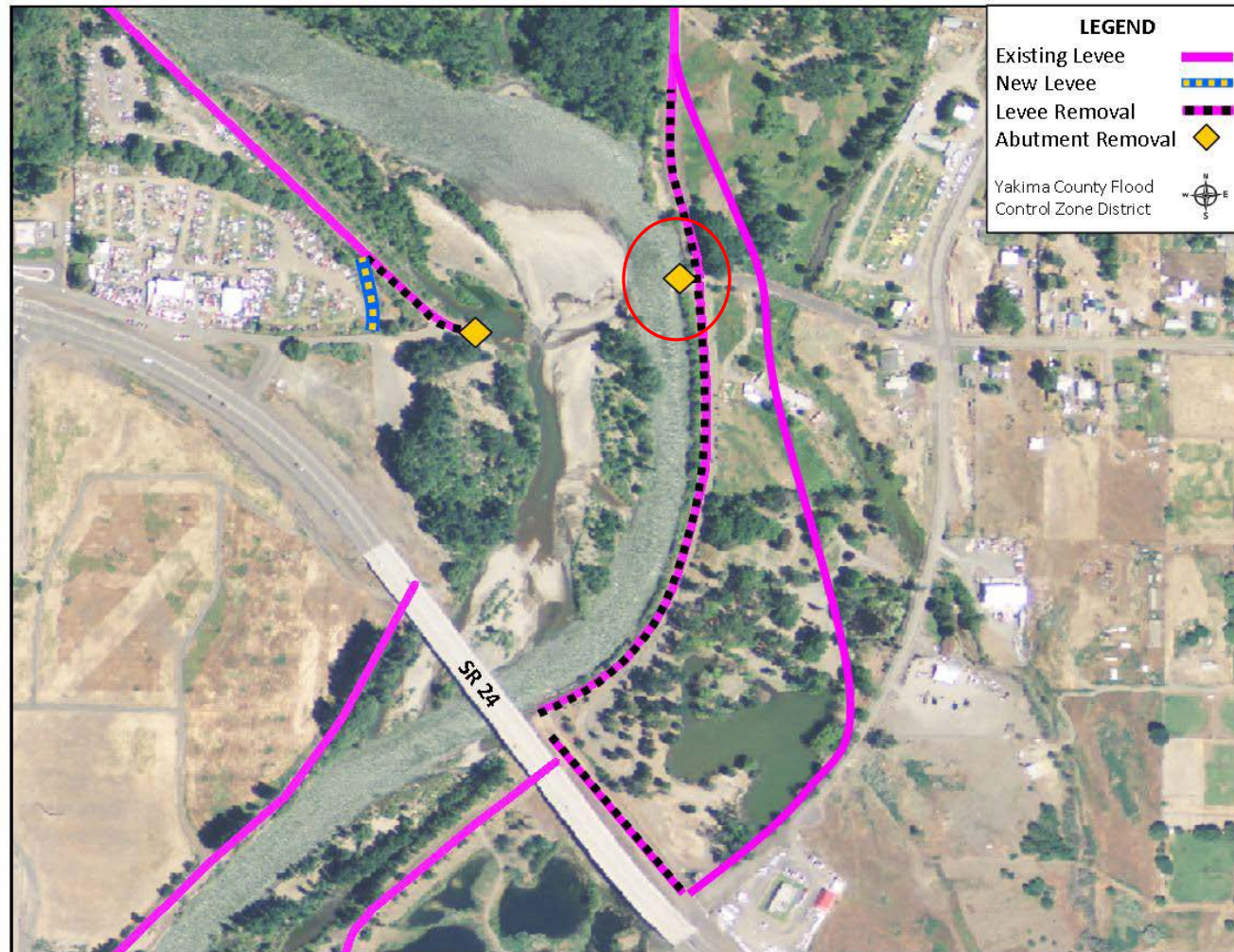


## Replacement/ Improvements can be driven by opportunity and Crisis



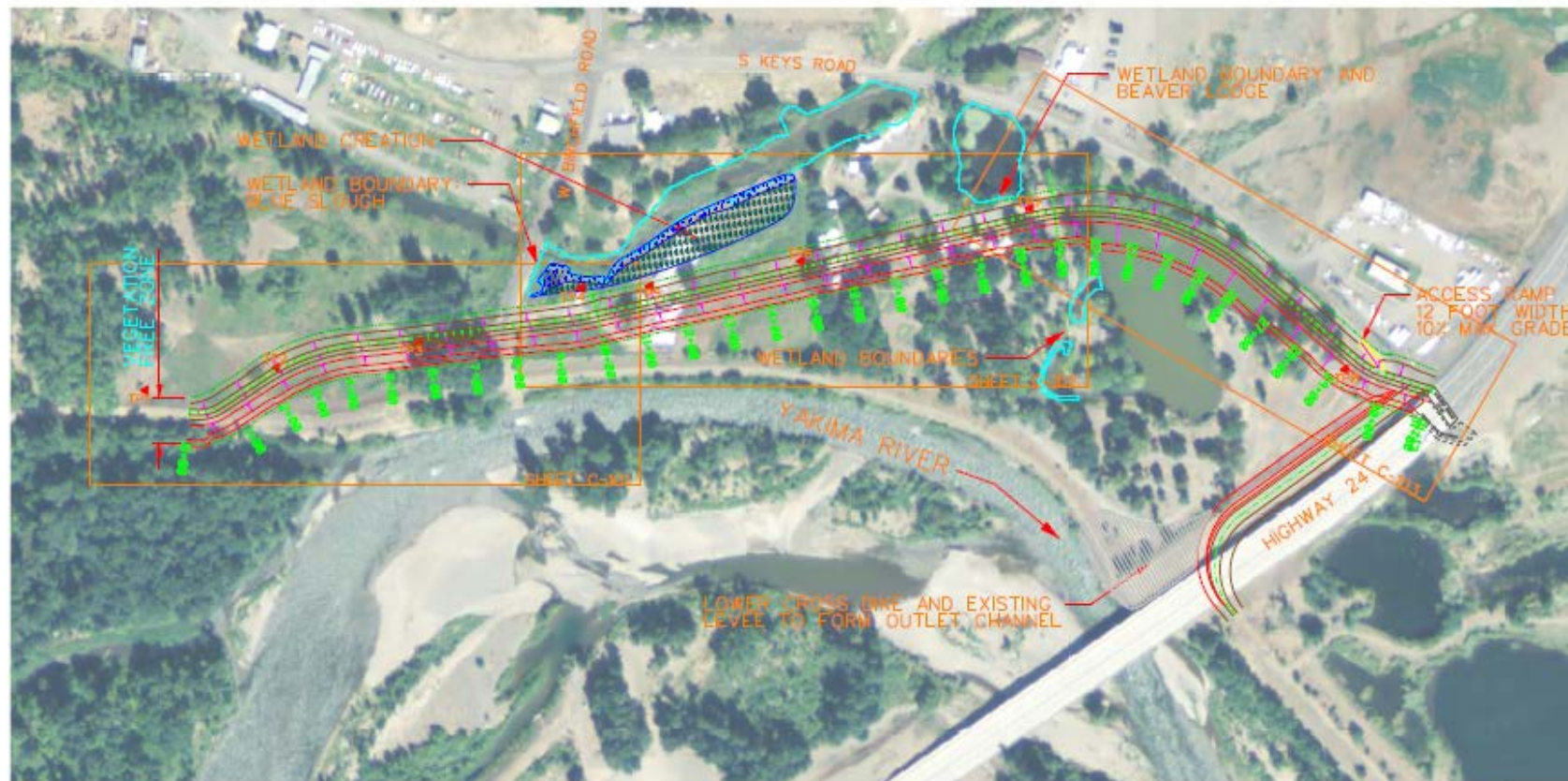


## Gap to Gap Projects - North SR 24 Bridge





# What was built but where to get the fill?



## GENERAL SITE PLAN

1" = 150'

## LEGEND

TP# TEST PIT NUMBER  
& APPROXIMATE LOCATION

SURVEY NOTE:



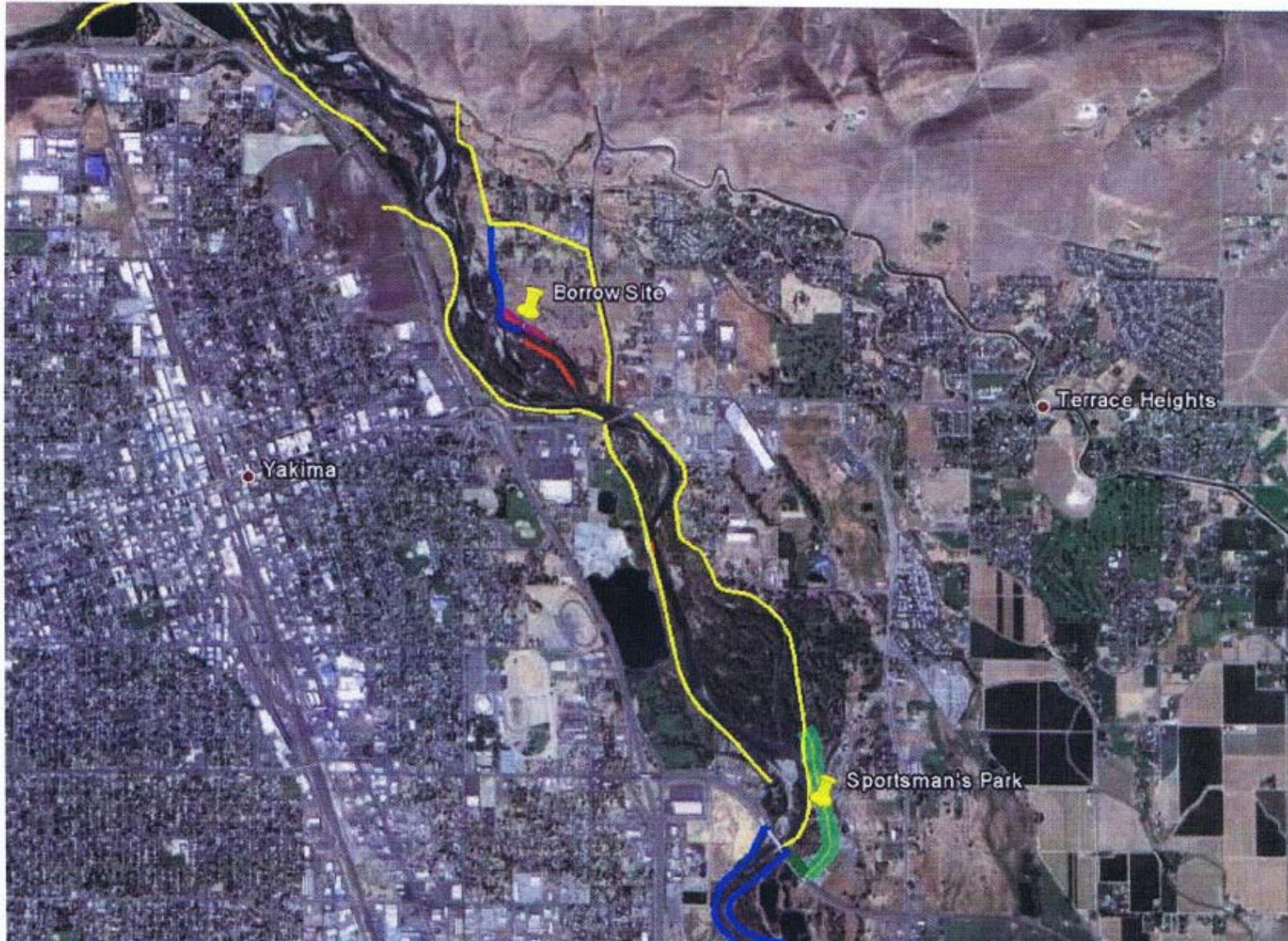


Figure 1. General location of the Sportsman's Park Project and the borrow site.

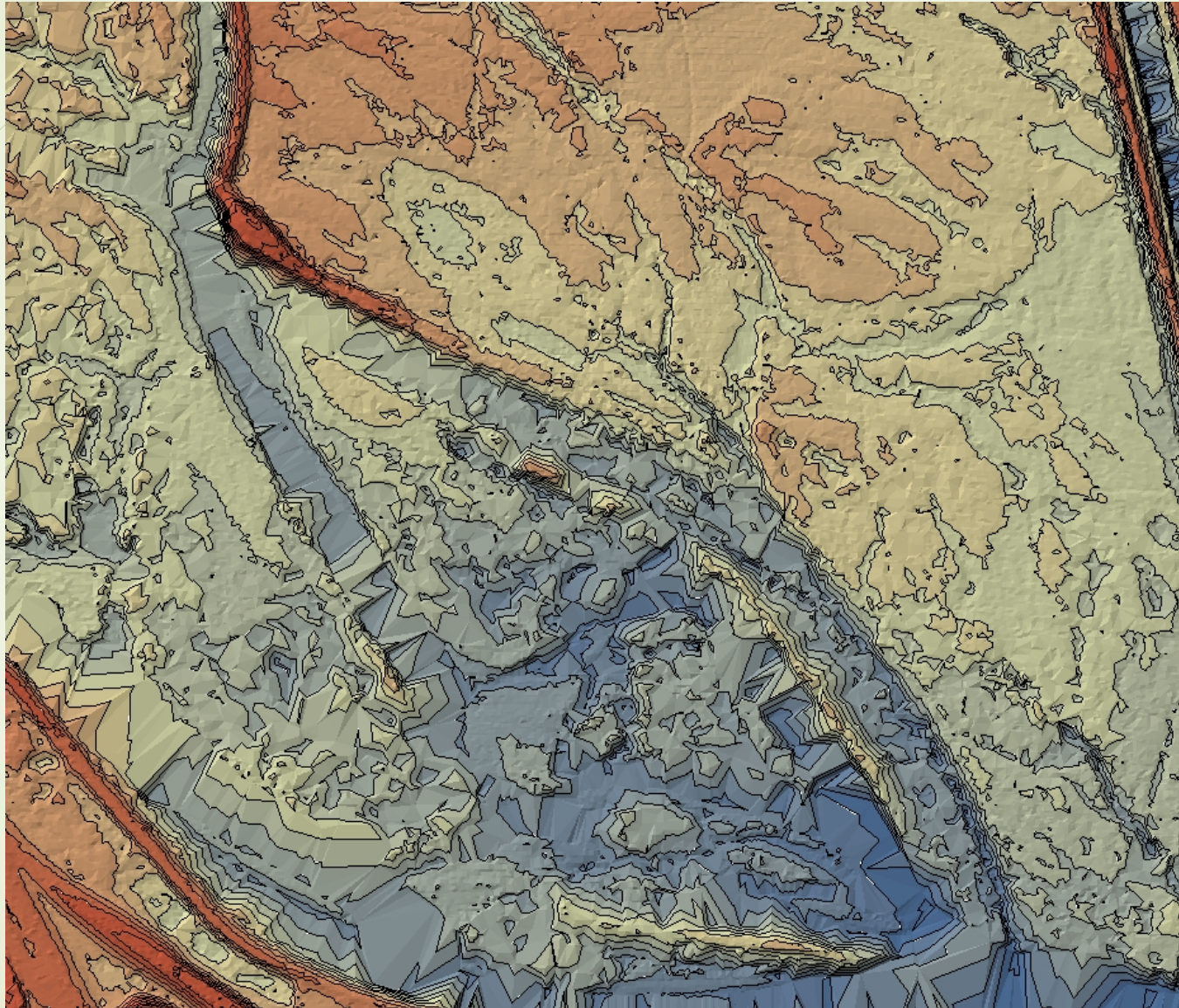


# Hartford Road Site -1971



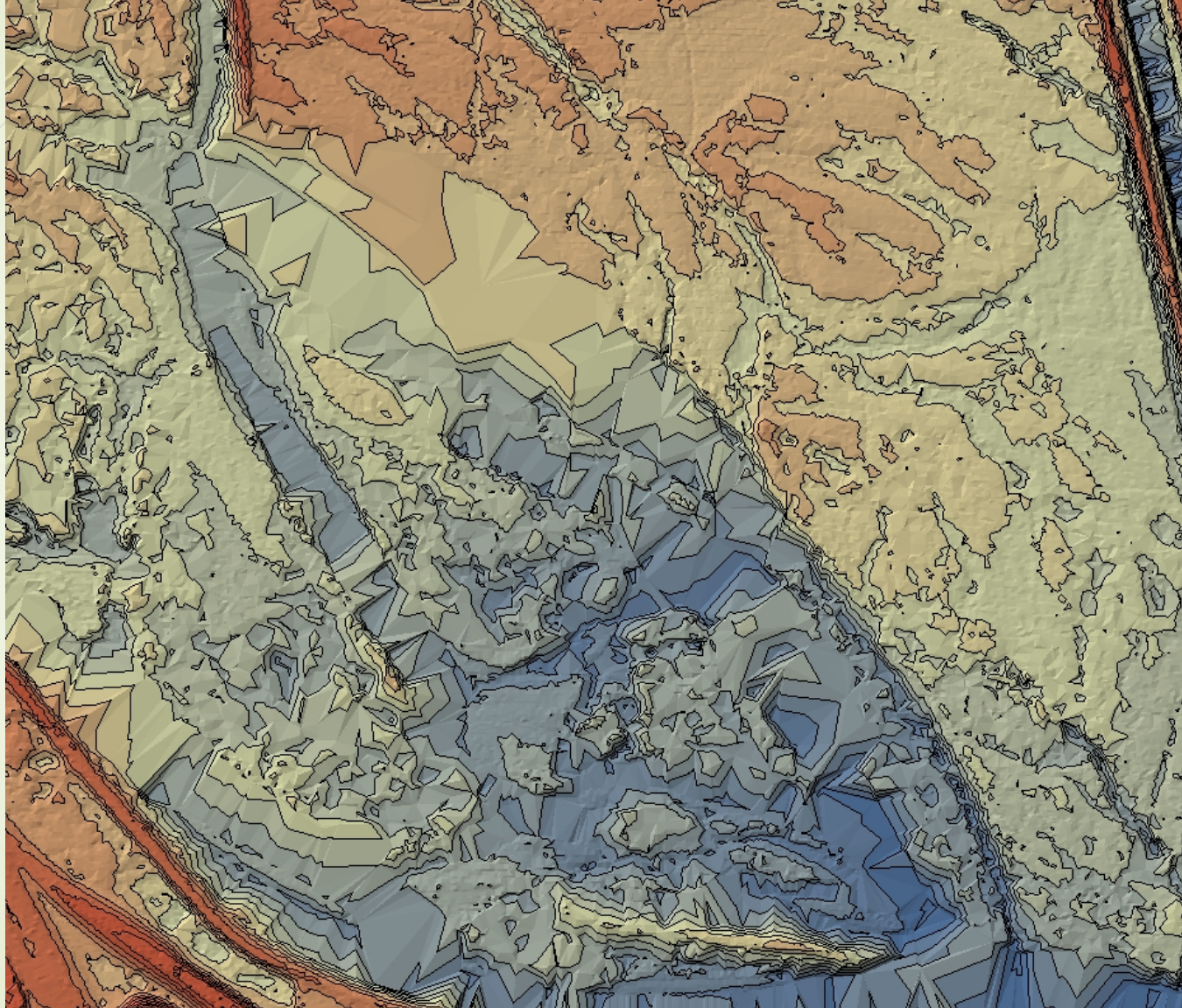


# Hartford Road Borrow Site – 2011 topo

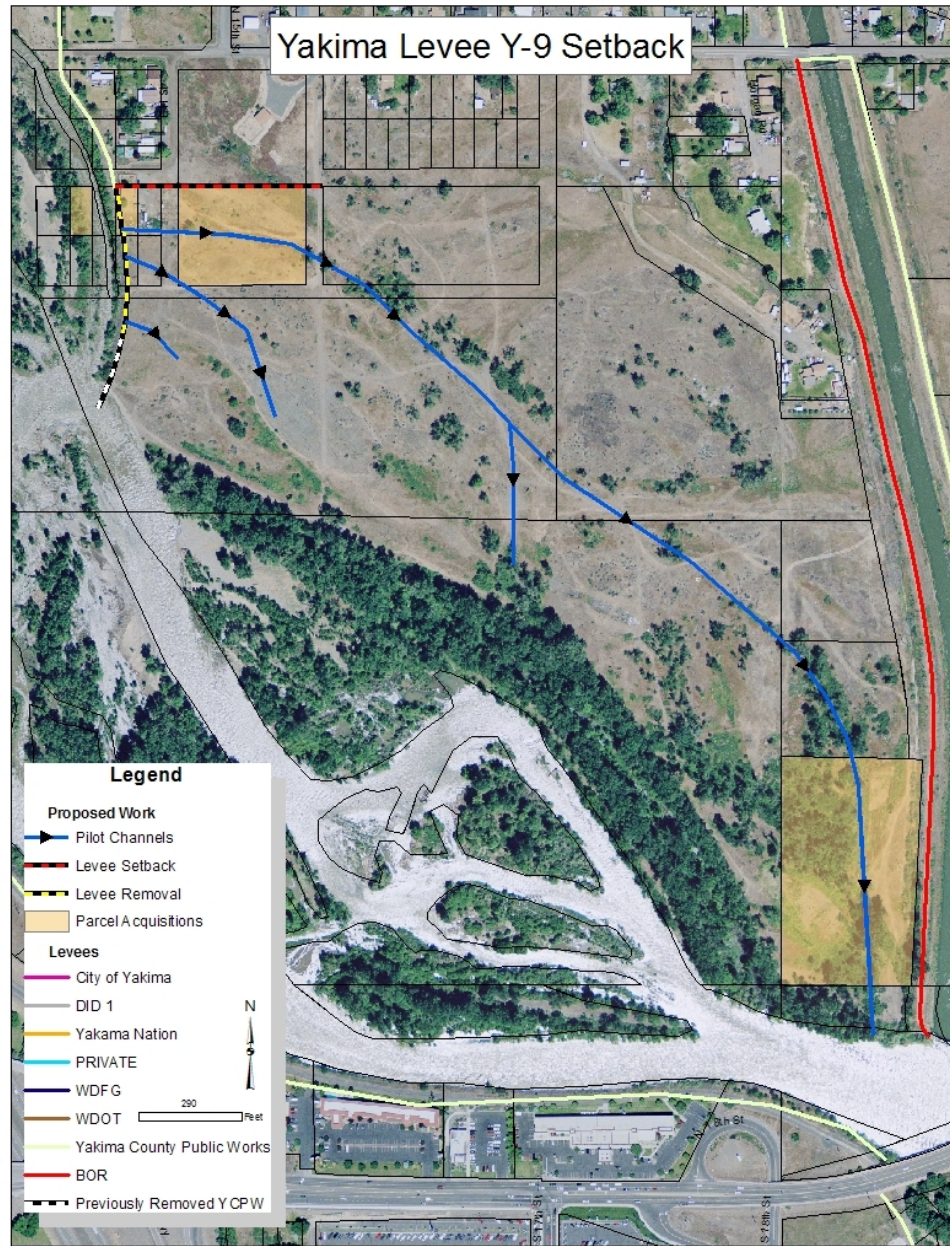




# Hartford Road Borrow Site – Design topo







Yakima Y-9

\$190K (YBIP)

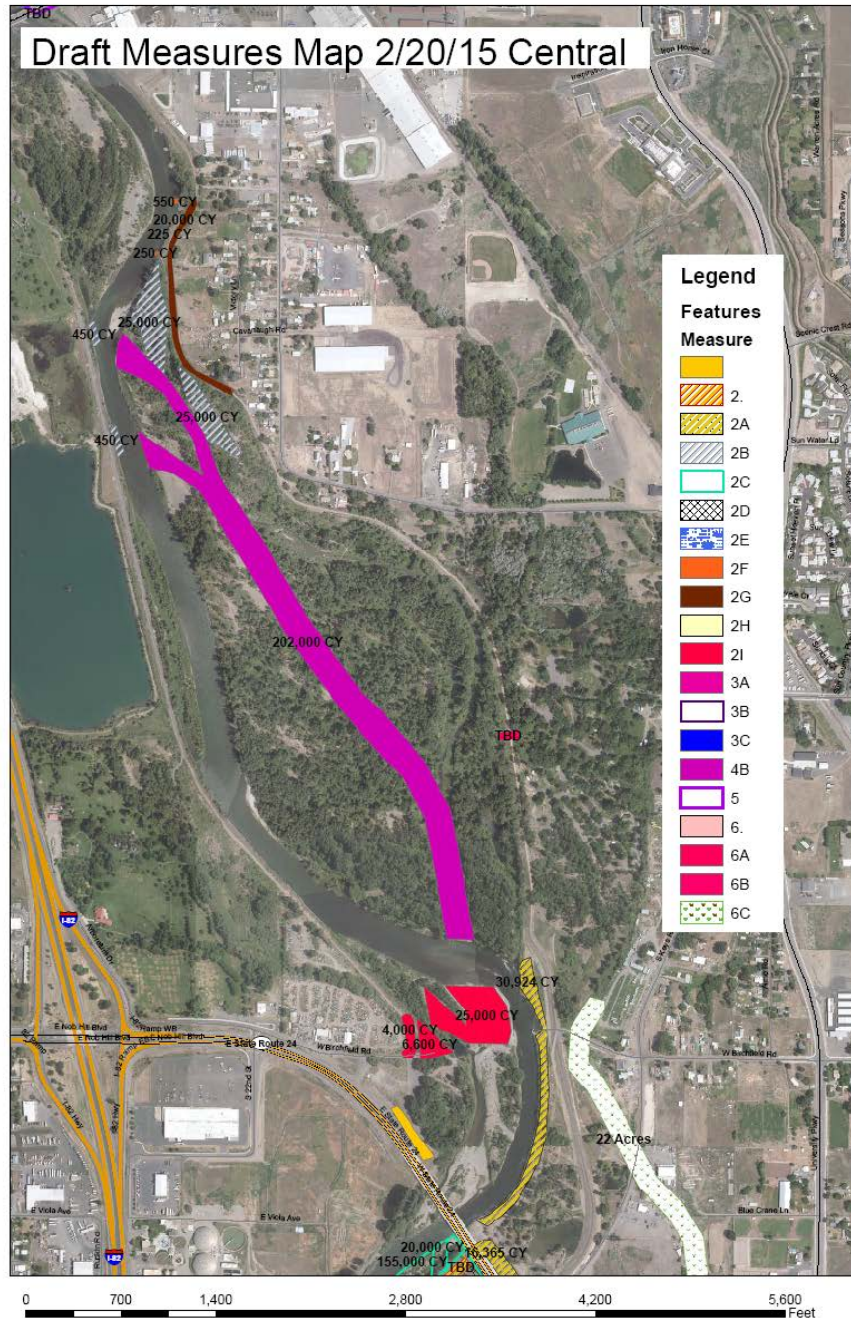
\$500K (FbD)

\$200K (FCZD)

Plus whatever  
the Corps Spent  
in 2011  
900K?

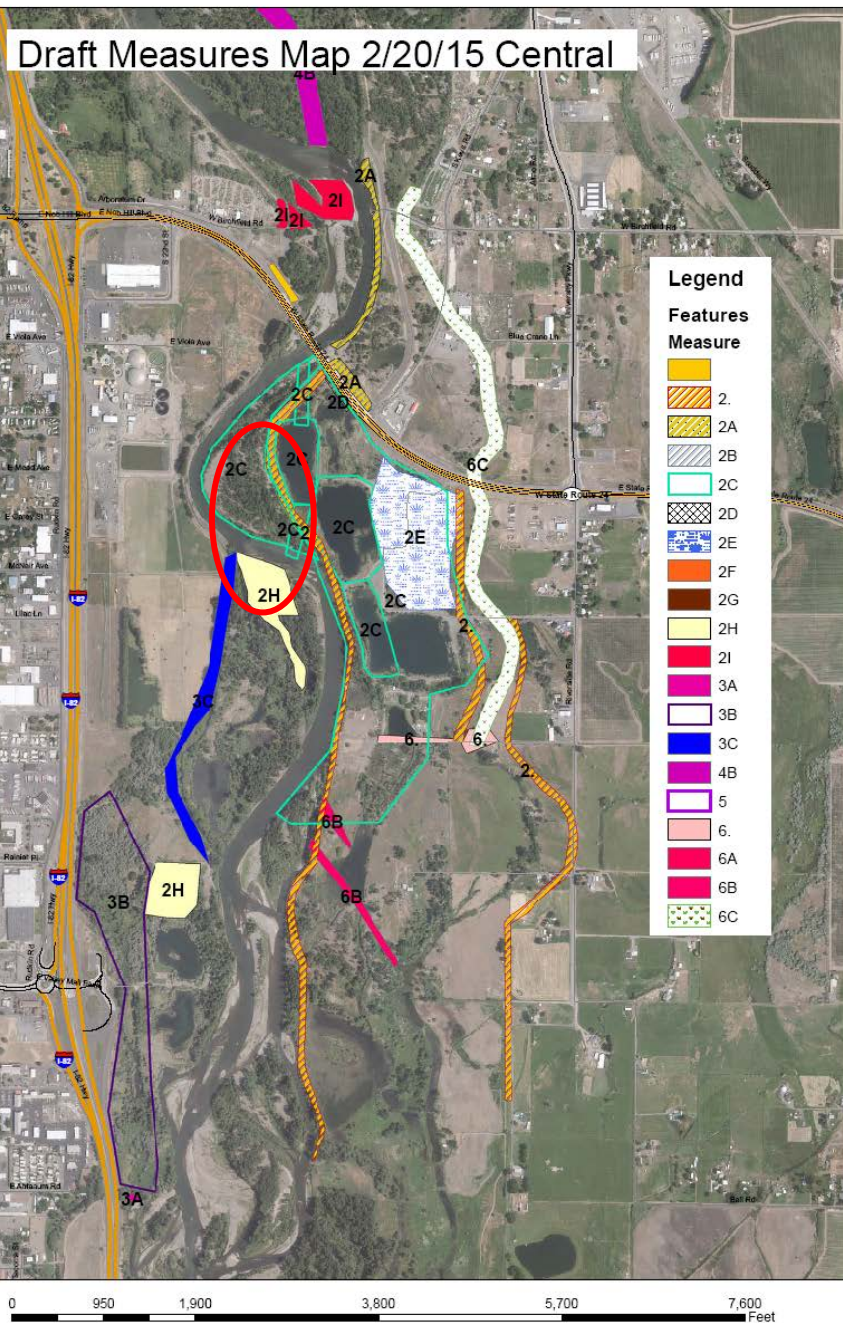


## Draft Measures Map 2/20/15 Central



10% Design -  
Upper





10% Design  
Lower



