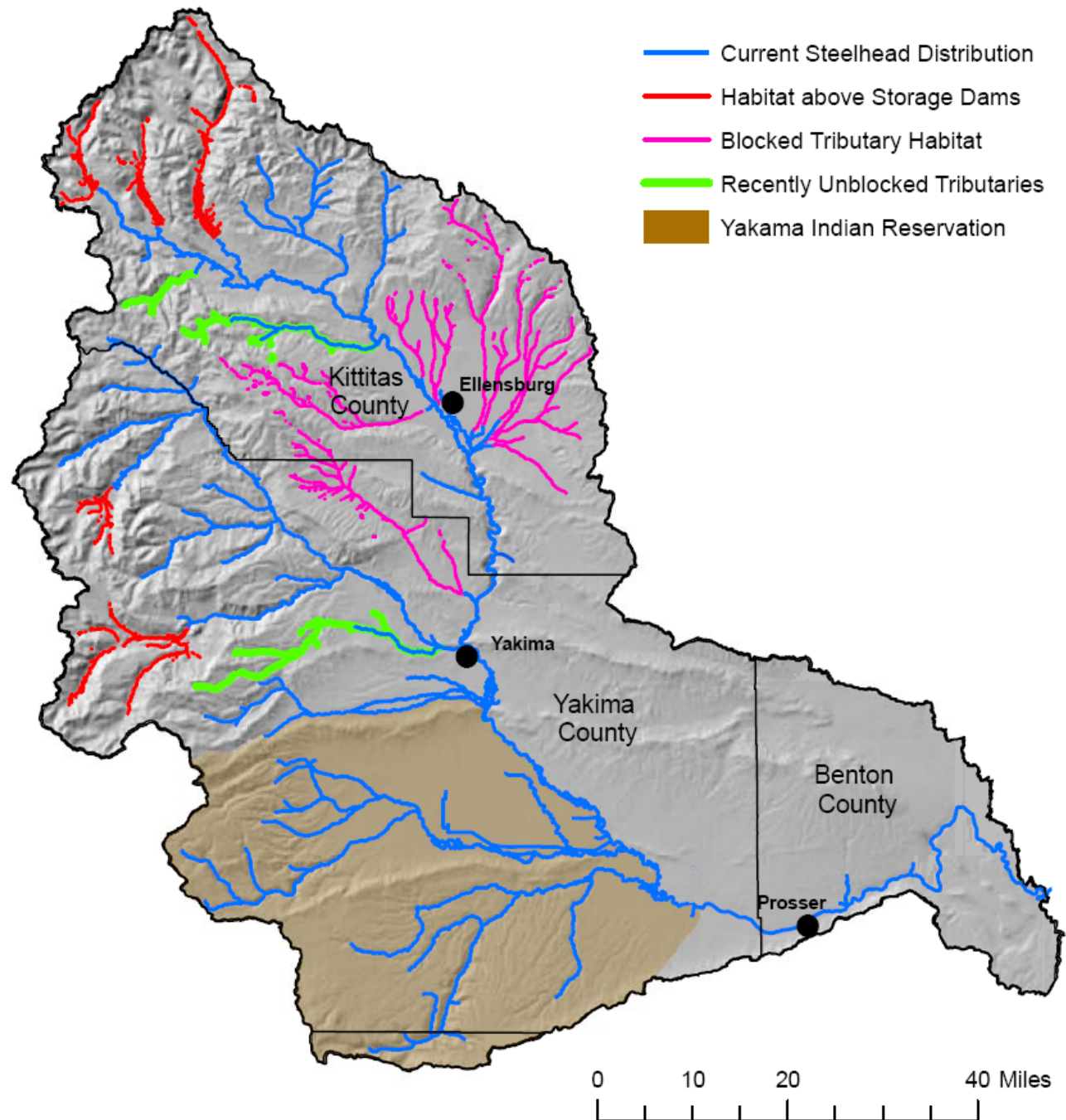
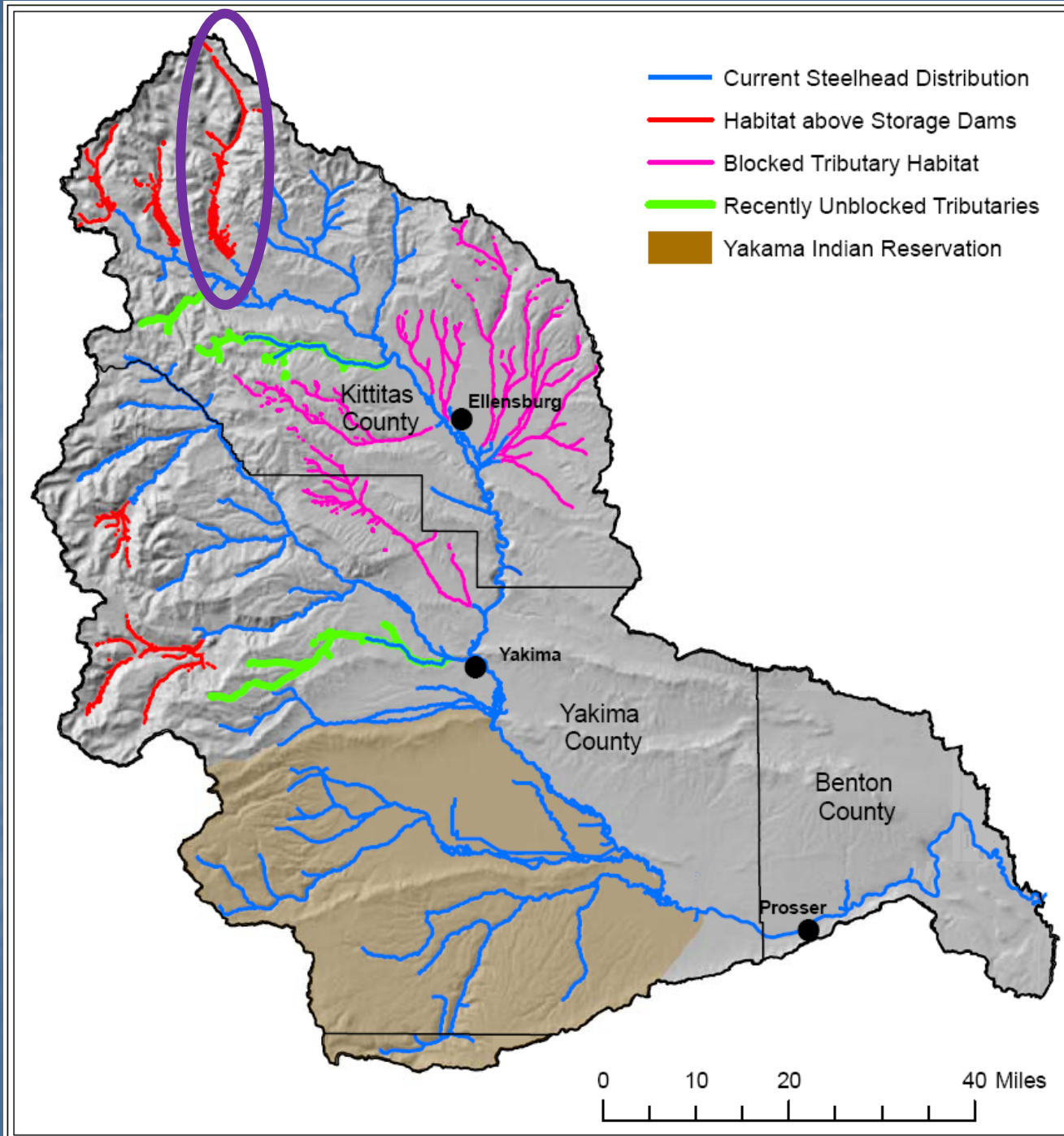


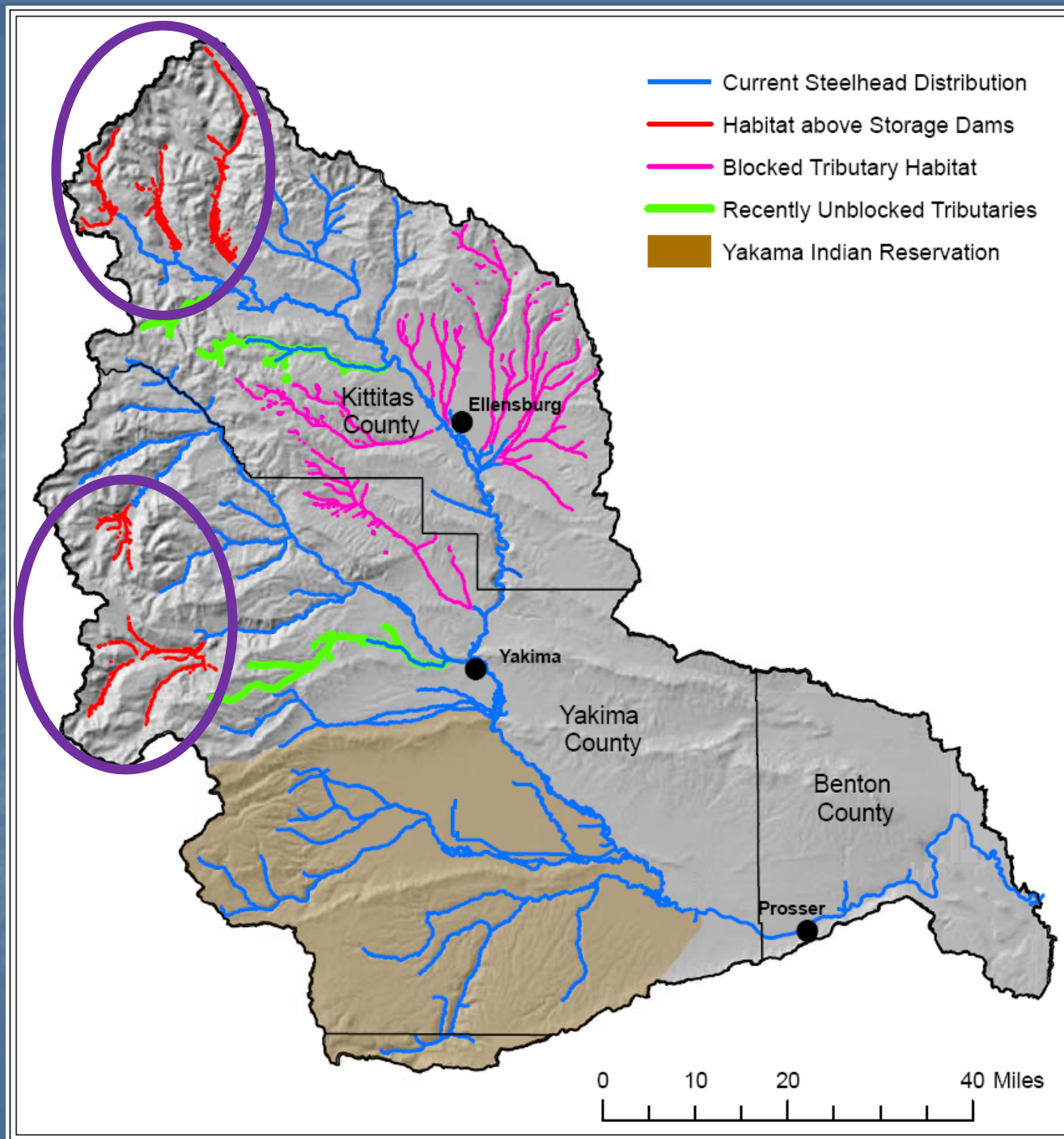
# Fish Passage



# Cle Elum Passage



# Passage at Storage Dams





# Tributary Passage

- Big, Cowiche and Taneum Creeks reopened
- Manastash, Reecer and lower Wilson system in progress
- Nanuem and Wenas still blocked
- Reservoir level impacts on Bull Trout passage

# YTHAP Cowiche

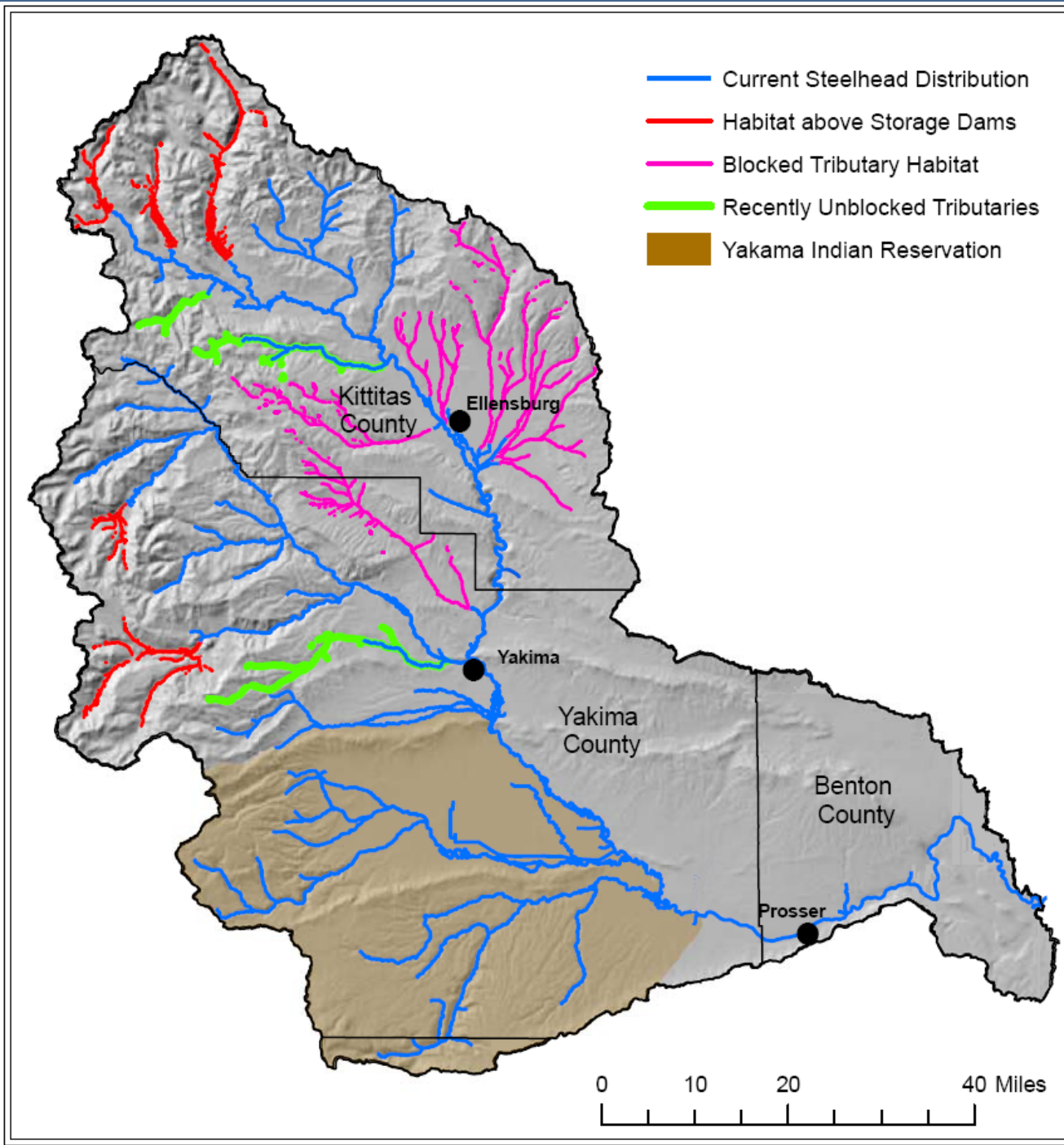


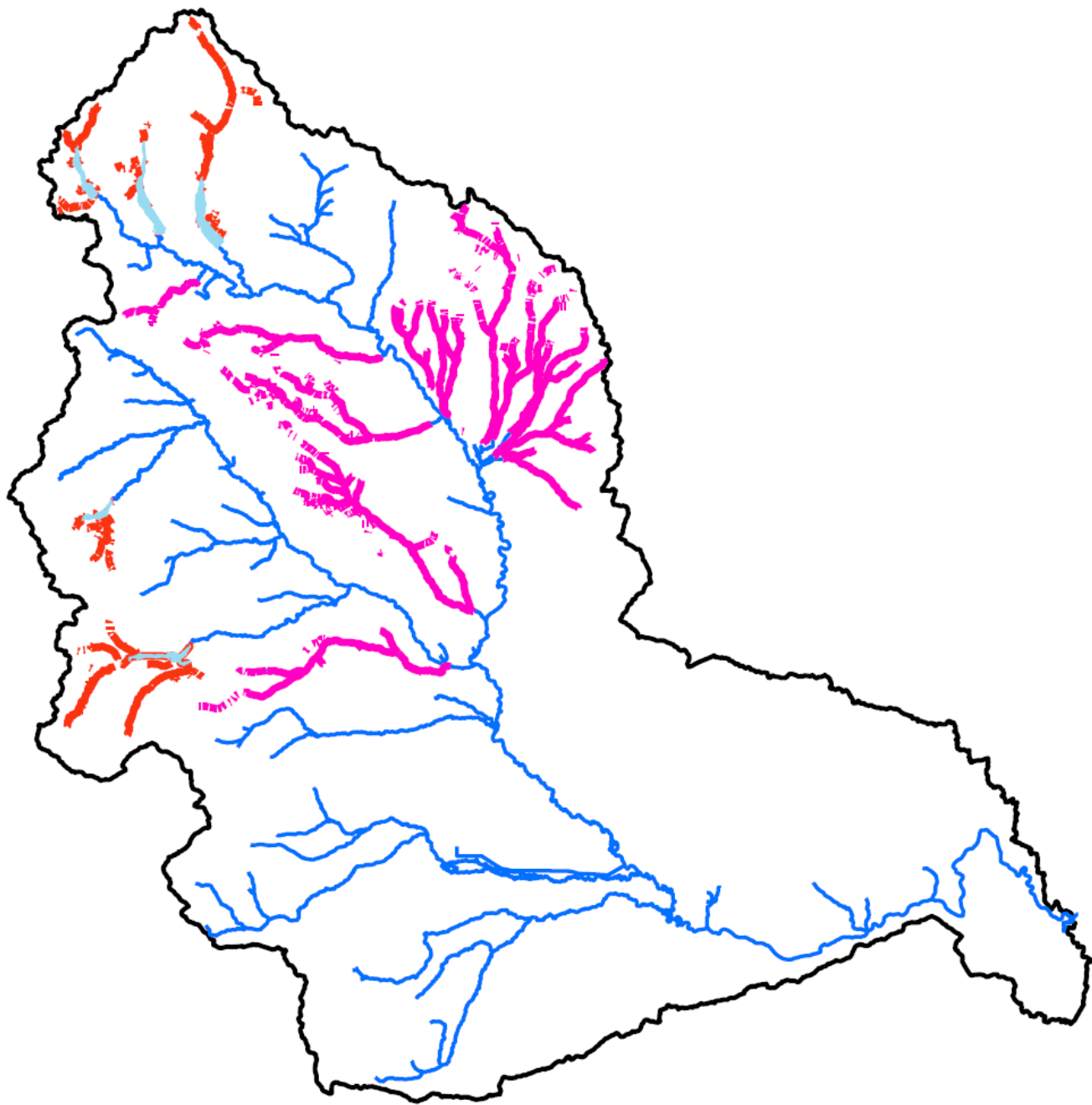
BEFORE: Irrigation dam blocks fish passage

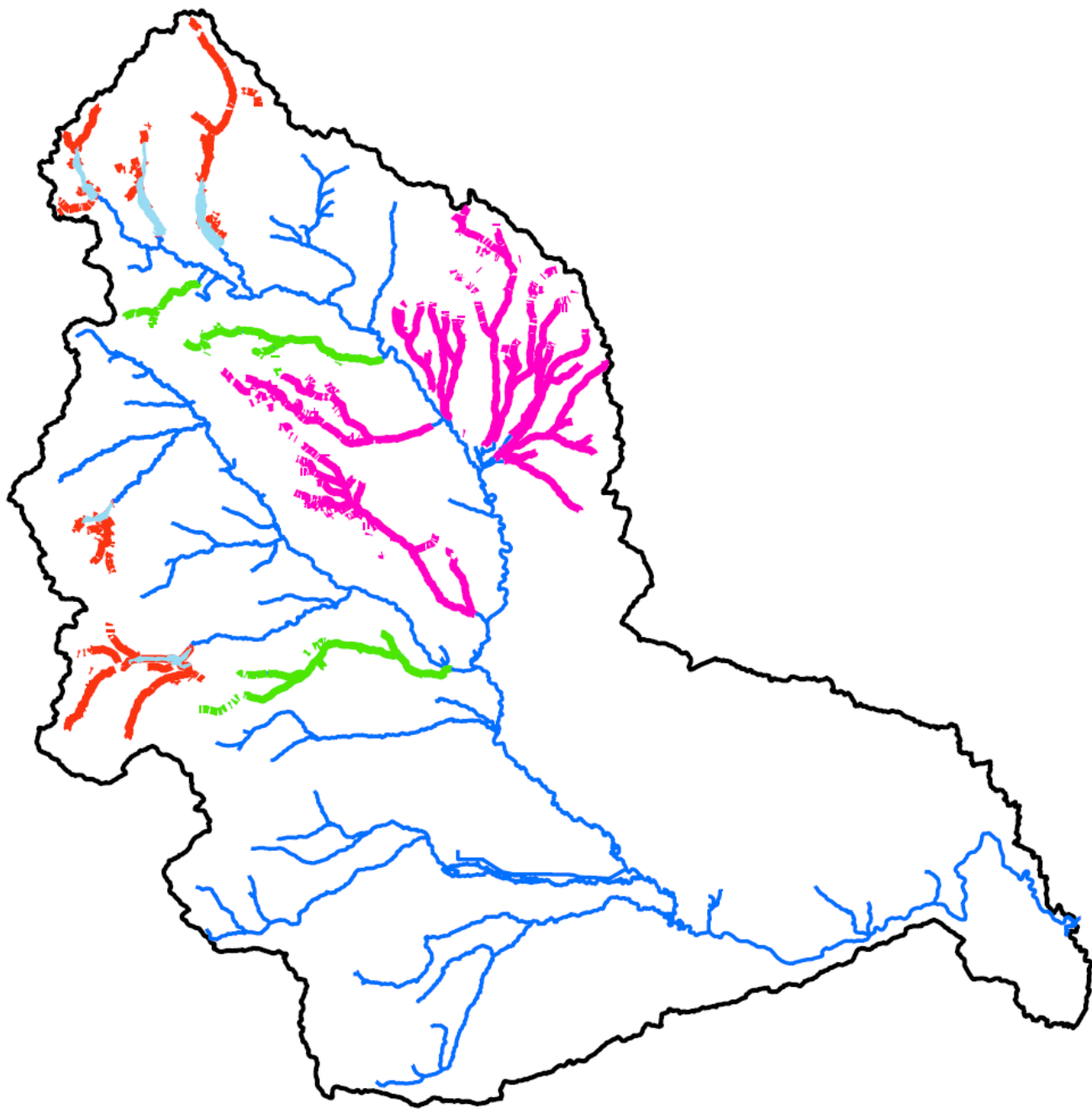


AFTER: Rock weirs allow full fish passage

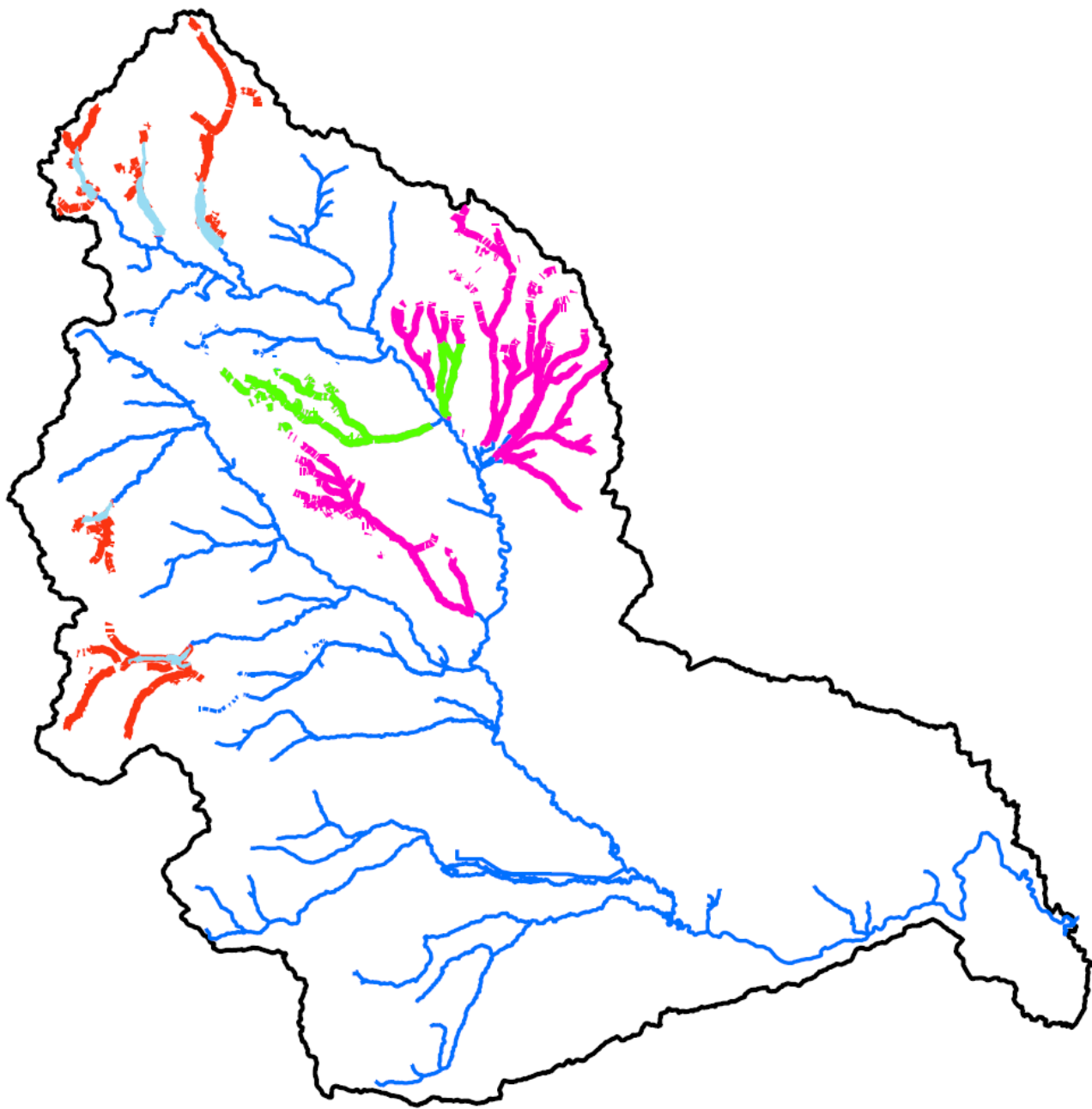


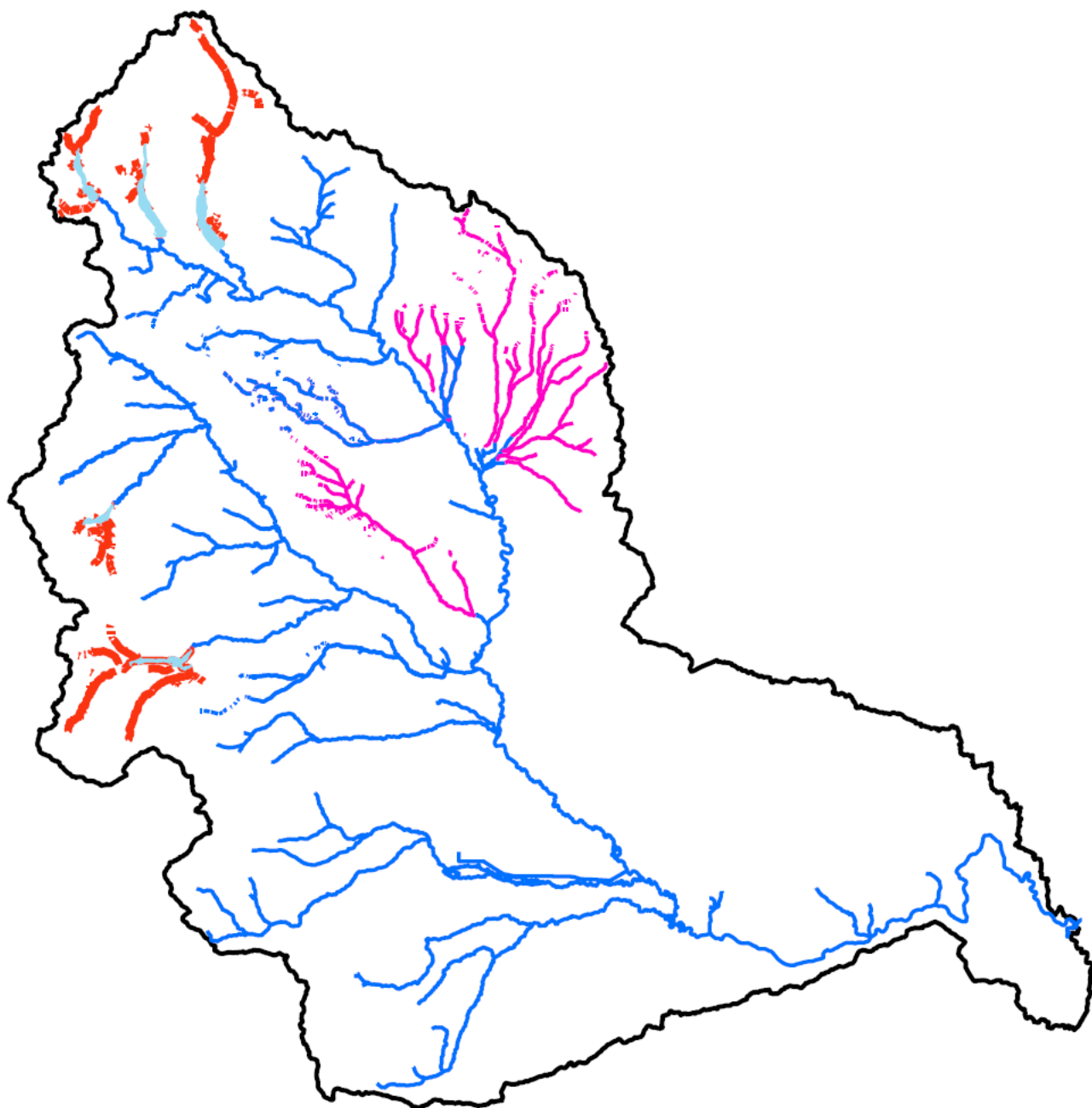






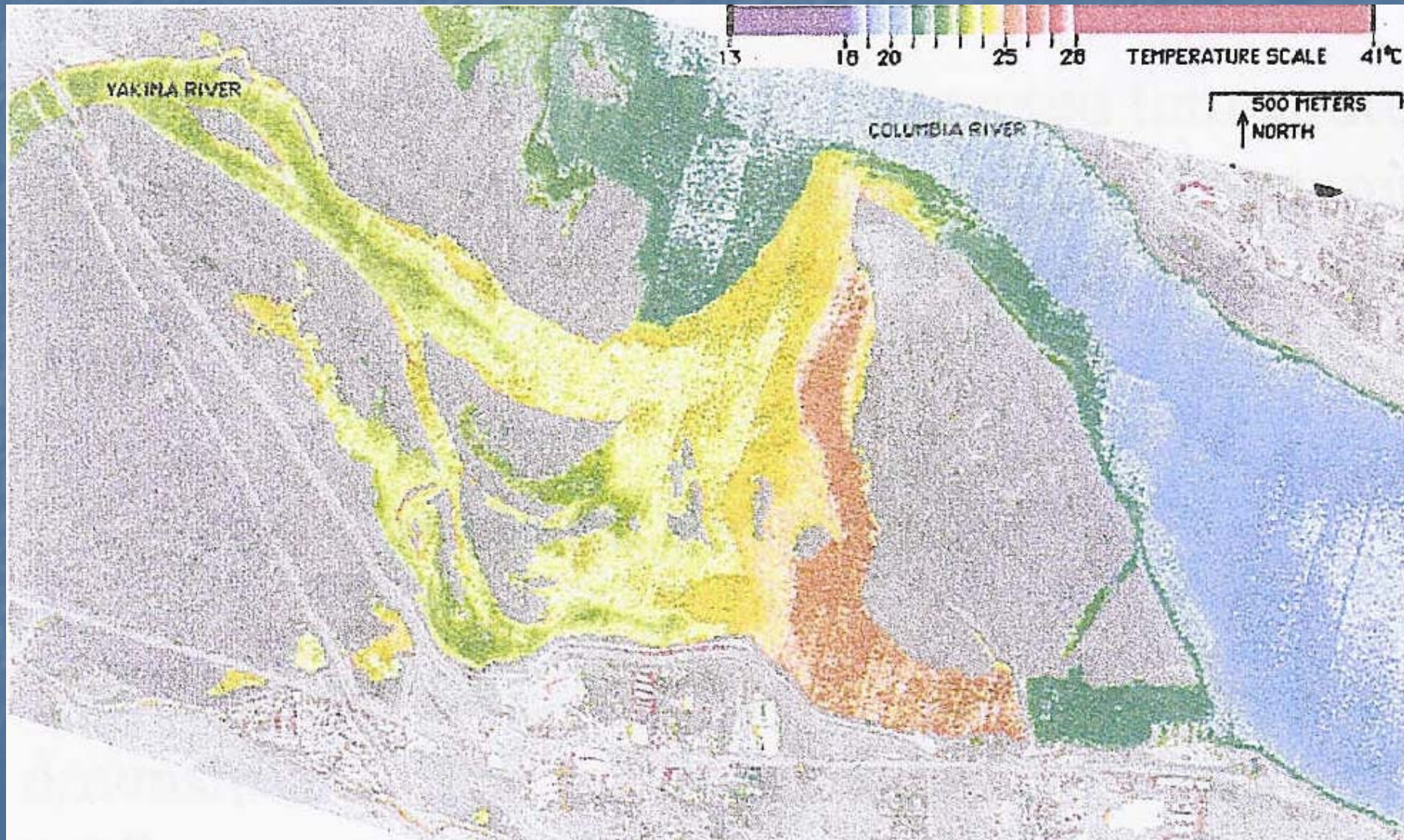








# Temperature as a passage issue





# Juvenile Downstream Passage

- Roza Dam modifications/subordination
- Need to maintain/improve existing screens
- Need to screen unscreened diversions
- Need to identify and address mortality in bypass systems (e.g. Chandler)

