



— BUREAU OF —  
RECLAMATION

Welcome to the

# Leavenworth National Fish Hatchery Surface Water Intake Fish Screens and Fish Passage (SWISP) Project

## Draft EIS Q&A/Public Comment

## Video Teleconference

December 8 & 10, 2020

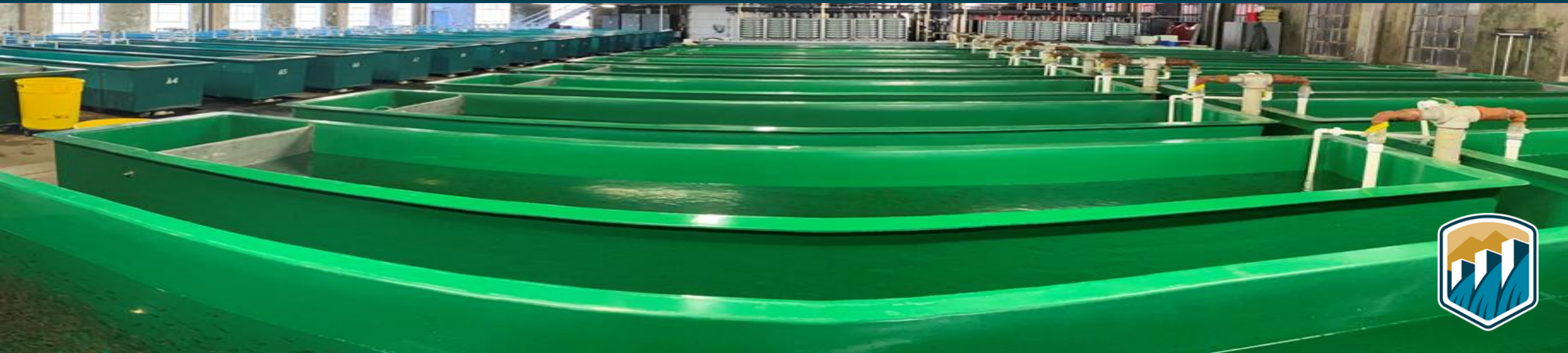


# GROUND RULES

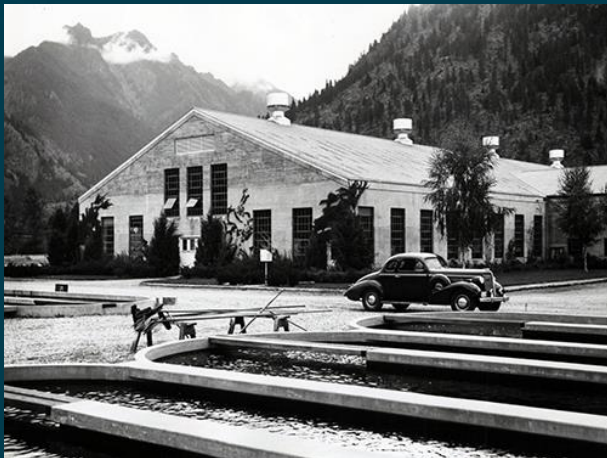
1. Microphones and videos of the audience will be turned off during the presentation.
2. This presentation will be recorded and posted to the website (<https://www.usbr.gov/pn/programs/leavenworth/swisp/index.html>).
3. Questions will be addressed during the Question and Answer Session at the end of the presentation. We will do our best to address the questions in the order they come in and to allow everyone an opportunity to voice their questions and comments.
4. Comments can be submitted verbally today after the Question and Answer Session, or via mail or email (further information to be provided in this presentation).
5. Comments may be time-limited today in order to allow everyone who is on the meeting today the opportunity to offer a comment. We ask that you be mindful and respectful of this time limit.

# Purpose of the Video Teleconference

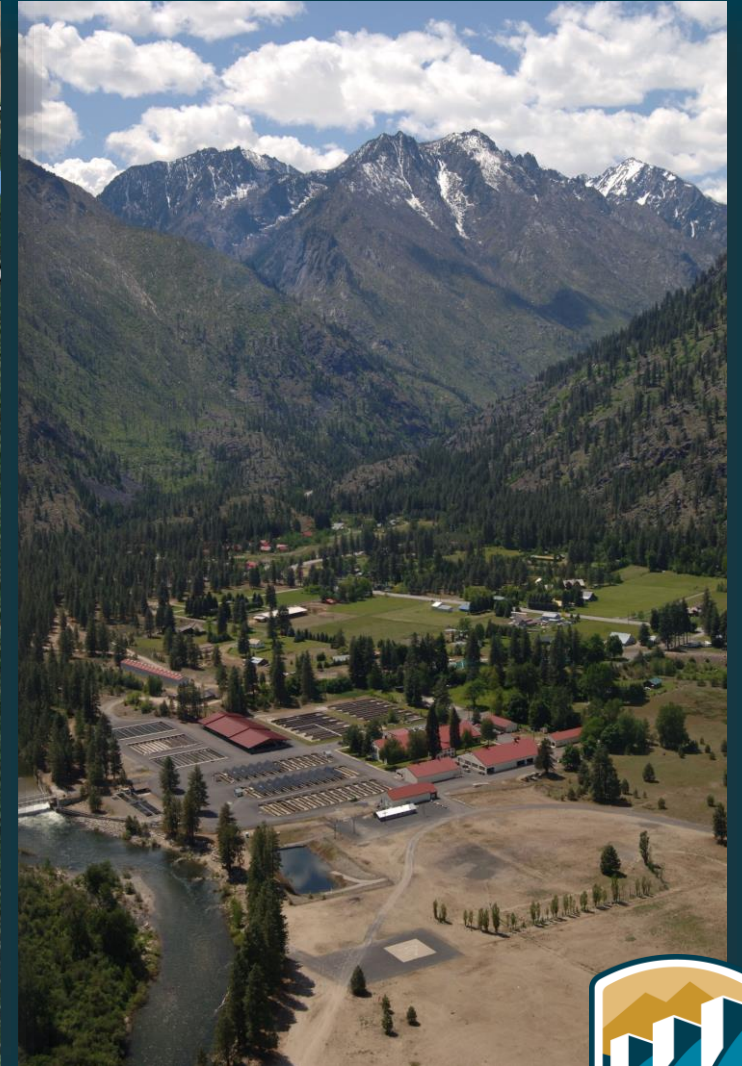
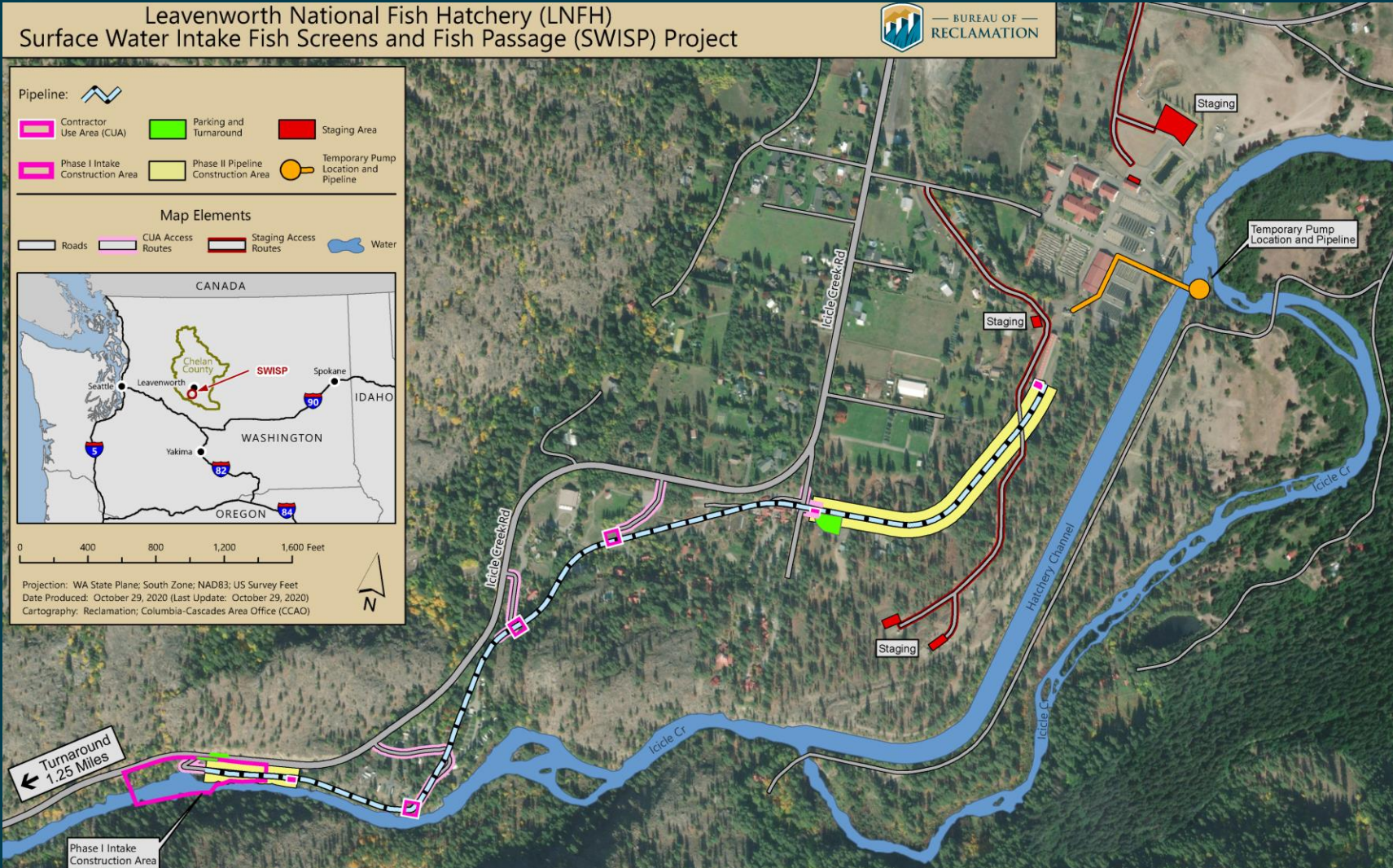
- To provide an overview and answer any questions you may have about the SWISP Project Draft Environmental Impact Statement (EIS)
- We will review:
  - ✓ Project Background
  - ✓ Purpose and Need
  - ✓ Proposed Action and Alternatives
  - ✓ Comparison of impacts between Alternatives
  - ✓ Draft EIS Public Comment Process



# Introduction and Background



# Project Location



# Purpose and Need

- Meet terms and conditions of 2017 Biological Opinion
- Minimize take of ESA-listed fish species
- Provide fish passage that complies with current regulatory criteria
- Ensure safe, efficient, and reliable delivery of Hatchery's full surface water rights from Icicle Creek



# Cooperating and Participating Agencies

Cooperating Agencies: U.S. Fish and Wildlife Service, U.S. Army Corps of Engineers

## Participating Agencies:

- Chelan County
- Colville Tribes Fish and Wildlife Department
- NOAA Fisheries
- Washington Department of Archaeology and Historic Preservation
- Washington Department of Ecology
- Washington Department of Fish and Wildlife
- Washington Department of Natural Resources
- Yakama Nation Fisheries

## Interested Parties:


- Cascade Orchard Irrigation Company
- City of Leavenworth
- Icicle Creek Center for the Arts
- Icicle Peshastin Irrigation District
- Icicle River RV Resort
- Icicle Watershed Council
- Icicle Workgroup
- Sleeping Lady Mountain Resort
- Trout Unlimited
- Wild Fish Conservancy Northwest
- Washington Water Trust

## One Federal Decision



# Alternatives Development

- Scoping Report (June 2020)
- Alternatives Compilation Report (November 2020)



The cover of the Scoping Report features the Bureau of Reclamation logo at the top left. The title is centered in bold black text. Below the title is a small photograph of a river with a concrete intake structure. The bottom of the cover contains the agency name and address, and the date.

 — BUREAU OF —  
RECLAMATION

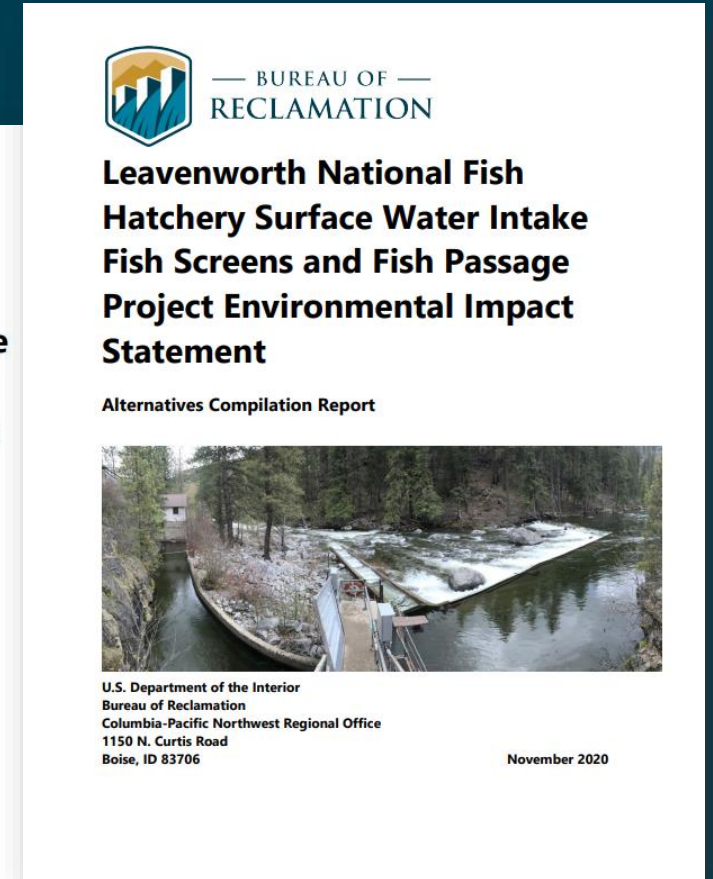
**Leavenworth National Fish Hatchery Surface Water Intake Fish Screens and Fish Passage Project Environmental Impact Statement**

Scoping Report




US Department of the Interior  
Bureau of Reclamation  
Columbia-Pacific Northwest Regional Office  
1150 N. Curtis Road  
Boise, ID 83706

June 2020




The cover of the Alternatives Compilation Report features the Bureau of Reclamation logo at the top left. The title is centered in bold black text. Below the title is a small photograph of a river with a concrete intake structure. The bottom of the cover contains the agency name and address, and the date.

 — BUREAU OF —  
RECLAMATION

**Leavenworth National Fish Hatchery Surface Water Intake Fish Screens and Fish Passage Project Environmental Impact Statement**

Alternatives Compilation Report



U.S. Department of the Interior  
Bureau of Reclamation  
Columbia-Pacific Northwest Regional Office  
1150 N. Curtis Road  
Boise, ID 83706

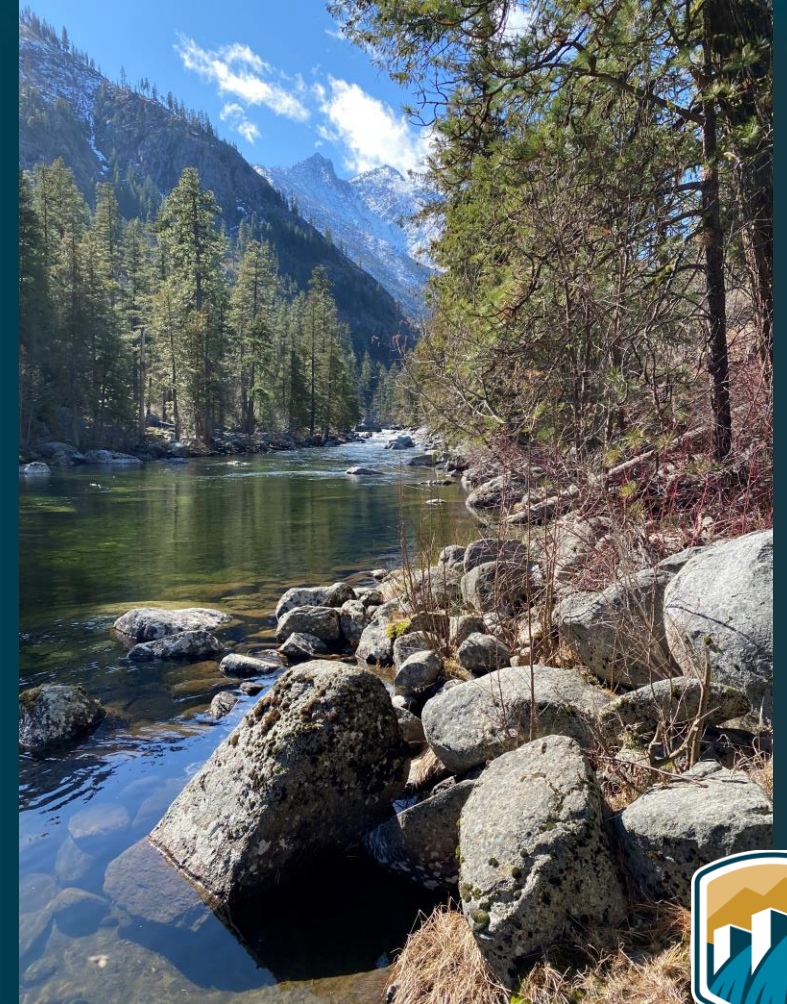
November 2020





# Primary Resources and Uses of Concern

- Fisheries and Aquatic Ecosystems
  - Impacts to T&E fish species and Critical Habitat
- Noise
  - Impacts from construction, pumping, and traffic
- Water Quality
  - Impacts of pH, temperature, and turbidity
- Transportation
  - Impacts to residents and recreationists from traffic delays
- Tribal Interests
  - Impacts to Tribal fishery



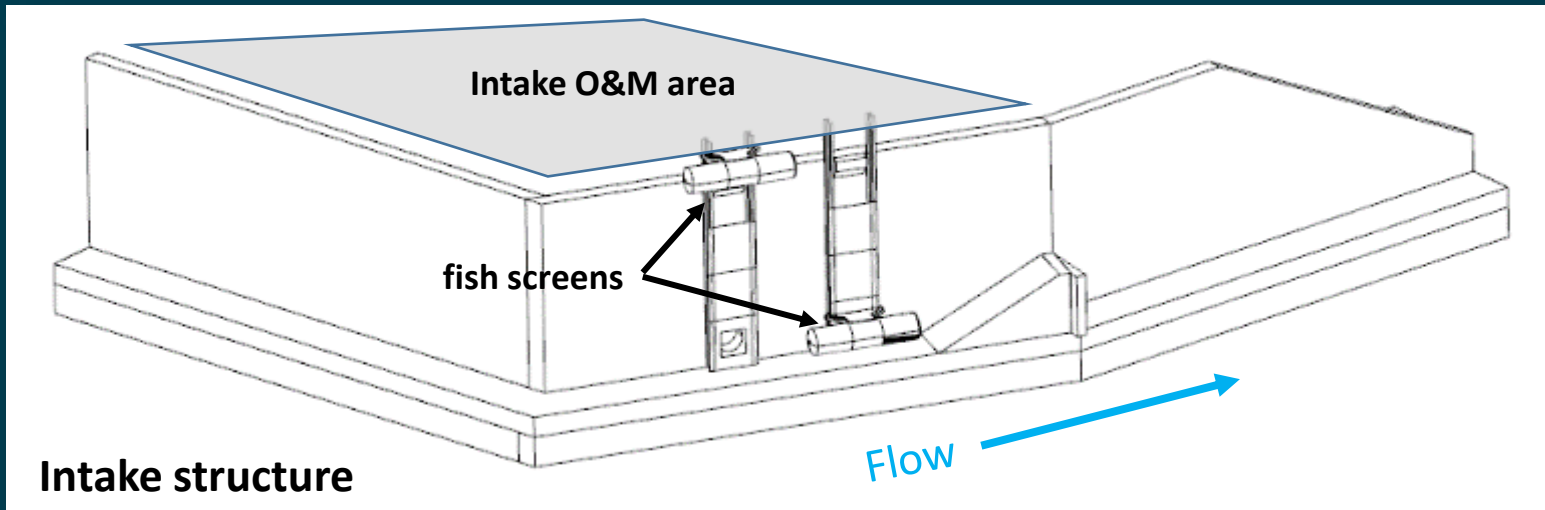
# Alternative A – No Action

- Does not comply with NMFS fish screening and passage criteria
- Does not meet 2017 BiOp requirements
- Safety issues for LNFH staff associated with ice and sediment accumulation would persist
- Intake and delivery system reliability issues from deterioration



# Alternative B – Proposed Action

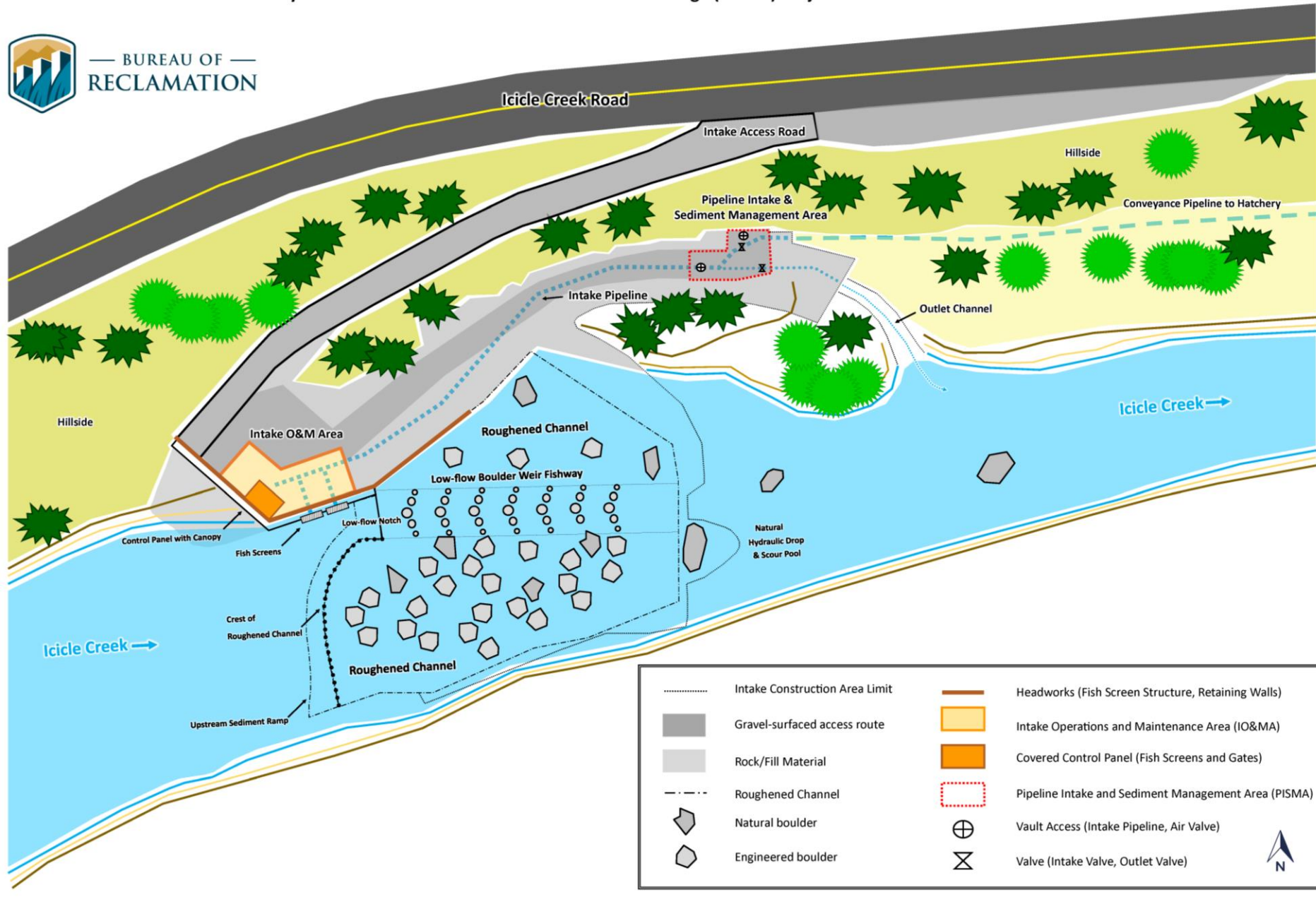
- Intake headworks with instream fish screens to comply with 2017 BiOp requirements
- Roughened channel with low flow boulder weir fishway
- Improved and expanded access road and intake O&M area
- Pipeline intake and sediment management area
- Phase I (intake facilities) construction schedule: 24-hr a day/4 ½-month in-water work window (IWWW)
- 2 IWWW to complete Phase I
- Replace conveyance pipeline on USFWS lands; line pipeline with CIPP on private lands



# Leavenworth National Fish Hatchery Surface Water Intake Fish Screens and Fish Passage (SWISP) Project



BUREAU OF RECLAMATION



.....	Intake Construction Area Limit	—	Headworks (Fish Screen Structure, Retaining Walls)
■	Gravel-surfaced access route	■	Intake Operations and Maintenance Area (IO&MA)
■	Rock/Fill Material	■	Covered Control Panel (Fish Screens and Gates)
- - -	Roughened Channel	⊠	Pipeline Intake and Sediment Management Area (PISMA)
⬠	Natural boulder	⊕	Vault Access (Intake Pipeline, Air Valve)
⬠	Engineered boulder	⊗	Valve (Intake Valve, Outlet Valve)



# Alternative C

- Construct intake structure and roughened channel same as Alternative B
- Conveyance pipeline: Replace less and line more compared to Alternative B



- ONLY replace lowest segment on USFWS lands
- Line remaining segments



# Alternative D

- Construct intake structure, roughened channel, and replace/line conveyance pipeline same as Alternative B except...
- Phase I (intake facilities) construction schedule: 7 a.m.-10 p.m. workday/4-month IWWW
- 4 IWWW to complete Phase I



# Key Differences between Action Alternatives

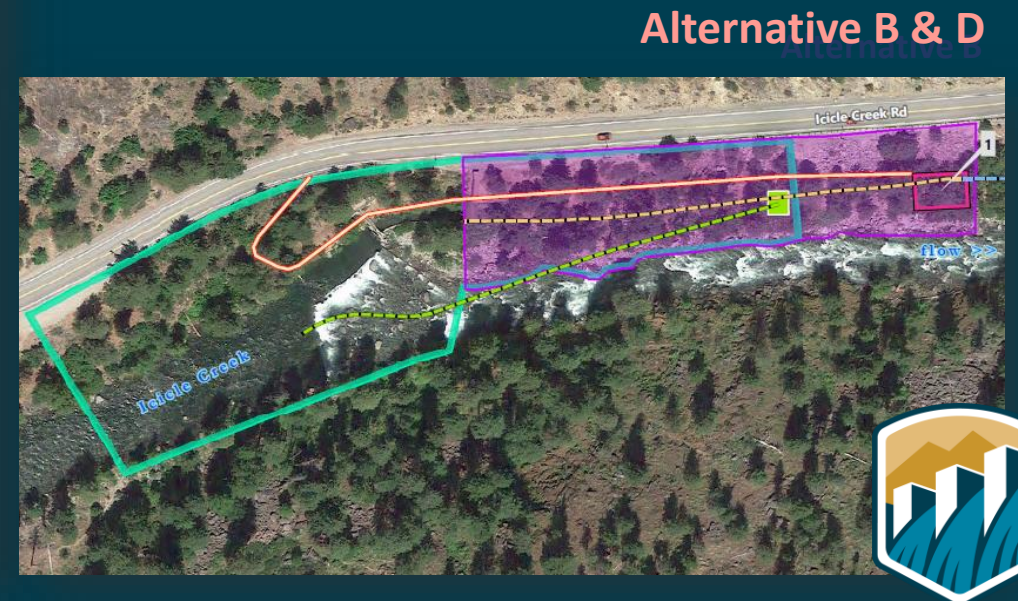
## Preferred Alternative

Project Component	Alternative B	Alternative C	Alternative D
<ul style="list-style-type: none"> <li>Phase I (intake facilities) Construction Schedule</li> <li>In-Water Work Window (IWWW)</li> </ul>	<ul style="list-style-type: none"> <li>24-hrs/day, up to 7 d/week</li> <li>July 1 to November 15</li> </ul>	<ul style="list-style-type: none"> <li>Same as Alt B</li> <li>Same as Alt B</li> </ul>	<ul style="list-style-type: none"> <li>7 a.m.-10 p.m., up to 6 d/week</li> <li>July 1 to October 31</li> </ul>
<ul style="list-style-type: none"> <li>Phase I IWWW Seasons</li> </ul>	<ul style="list-style-type: none"> <li>2</li> </ul>	<ul style="list-style-type: none"> <li>Same as Alt B</li> </ul>	<ul style="list-style-type: none"> <li>4</li> </ul>
<ul style="list-style-type: none"> <li>Fish screens operational</li> </ul>	<ul style="list-style-type: none"> <li>November 2022</li> </ul>	<ul style="list-style-type: none"> <li>Same as Alt B</li> </ul>	<ul style="list-style-type: none"> <li>October 2023</li> </ul>
<ul style="list-style-type: none"> <li>Intake facilities BiOp compliant</li> </ul>	<ul style="list-style-type: none"> <li>November 2023</li> </ul>	<ul style="list-style-type: none"> <li>Same as Alt B</li> </ul>	<ul style="list-style-type: none"> <li>October 2025</li> </ul>
<ul style="list-style-type: none"> <li>Pipeline replaced</li> </ul>	<ul style="list-style-type: none"> <li>2,180 feet</li> </ul>	<ul style="list-style-type: none"> <li>1,660 feet</li> </ul>	<ul style="list-style-type: none"> <li>Same as Alt B</li> </ul>
<ul style="list-style-type: none"> <li>Pipeline lined</li> </ul>	<ul style="list-style-type: none"> <li>4,000 feet</li> </ul>	<ul style="list-style-type: none"> <li>4,520 feet</li> </ul>	<ul style="list-style-type: none"> <li>Same as Alt B</li> </ul>
<ul style="list-style-type: none"> <li>Phase I temporary Hatchery water supply through pumping</li> </ul>	<ul style="list-style-type: none"> <li>10 days</li> </ul>	<ul style="list-style-type: none"> <li>Same as Alt B</li> </ul>	<ul style="list-style-type: none"> <li>8-9 months</li> </ul>



# Preferred Alternative: Alternative C

- Fish screens operational by November 2022 due to a 24-hr/day and 4 ½-IWWW schedule
- Reduced impacts to vegetation in riparian corridor due to more pipeline lining with CIPP





# Public Comment Period

November 20, 2020 – January 4, 2021



2020

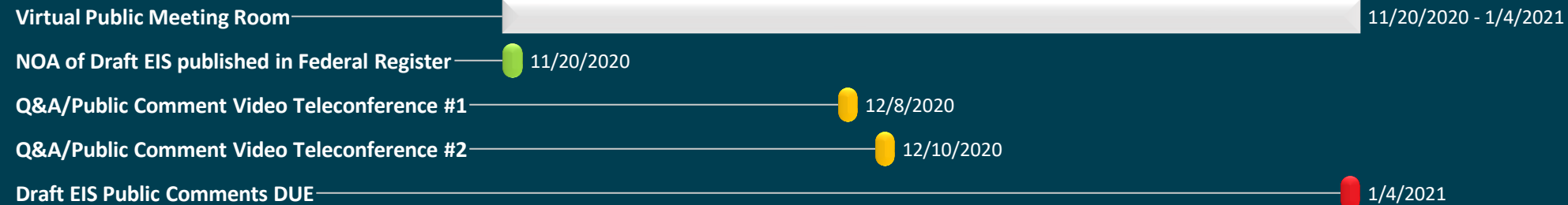
Nov

Dec

Jan 2021

2021

Today



# Draft EIS Public Comments

Draft EIS comments are due by **January 4, 2021**

Virtual Public Meeting Room:

<https://www.virtualpublicmeeting.com/leavenworth-swisp-draft-eis>

Email comments to:

[BOR-SHA-PNRLSWISP@usbr.gov](mailto:BOR-SHA-PNRLSWISP@usbr.gov)

Submit written comments to:

Jason Sutter, EIS Team Lead

Bureau of Reclamation, Columbia–Pacific Northwest Regional Office

1150 N. Curtis Road

Boise, ID 83706

Bureau of Reclamation Project Website:

<https://www.usbr.gov/pn/programs/leavenworth/swisp/index.html>





Leavenworth National  
Fish Hatchery

SWISP EIS



# Next Steps

Public Review of Draft EIS

Nov. 20, 2020 – Jan. 4, 2021

Respond to Comments

January 2021

Prepare Final EIS

January-February 2021

Publish Final EIS

March 2021

Sign Record of Decision

April 2021



— BUREAU OF —  
RECLAMATION



Leavenworth National  
Fish Hatchery

**SWISP EIS**



**BUREAU OF RECLAMATION PROJECT WEBSITE**

<https://www.usbr.gov/pn/programs/leavenworth/swisp/index.html>

**VIRTUAL MEETING ROOM**

<https://virtualpublicmeeting.com/leavenworth-swisp-eis>

**SWISP PUBLIC COMMENTS BY EMAIL**

[BOR-SHA-PNRLSWISP@usbr.gov](mailto:BOR-SHA-PNRLSWISP@usbr.gov)

**Thank you!**



— BUREAU OF —  
RECLAMATION

# QUESTION AND ANSWER INSTRUCTIONS



## Using the Zoom Web Platform or App

- If you have a question, please click on the “chat” icon at the bottom of your Zoom screen to write and send your question to the host of the meeting (Amy Lewis).
- The moderator will read the question aloud for all participants to hear.
- A Reclamation staff member will respond to your question aloud for all participants to hear.
- We will try to answer questions in the order they are received.



## Using Your Phone

- If you are calling in through your phone and you have a question, please press \*9 to “raise your hand” to let staff know you have a question.
- The moderator will then unmute you so that you can ask your question.
- You will be identified by the last four digits of your phone number.

# VIRTUAL COMMENTING PROCESS

- We will first call on participants who requested to offer a comment when they pre-registered using the registration link.
- We will then open the public comment period to anyone who would like to offer a comment. We will first go through those participants who are using the Zoom web portal or Zoom app.
- We will then move on to those participants calling in through the phone who would like to offer a comment.

# INSTRUCTIONS FOR COMMENTERS

- When it is your turn, the moderator will call out your name and display your name on the screen.
- To indicate that you are ready to offer your comment when the moderator reads your name, please use the "raise hand" feature at the bottom of your participants list or, if you are calling in through the phone, please press \*9 to "raise your hand."
- The moderator will then unmute you so that you can offer your comment.
- You will have approximately 5 minutes to offer your comment. The moderator will prompt you to finish your comment once you have reached this 5-minute limit.
- Again, please spell out your full first and last name before you provide your comment.

**\*To access the raise hand feature, click on the participants list icon at the bottom of your Zoom screen, then click on the raise hand button at the bottom of your participants list. If you are calling in using your phone, press \*9 on your keypad.**

If you are having issues with your computer microphone, please call in to the meeting:  
+1 253 215 8782 ; Meeting ID: 975 8790 8368

**Current Commenter:**

**Next Commenter:**

If you are unable to offer a verbal comment during the meeting today, the Bureau of Reclamation encourages you to submit your comment in writing via mail or email.



# Thank you!

The public meeting has now ended.

Comments must be submitted by close of business on  
**January 4, 2021.**

BUREAU OF RECLAMATION PROJECT WEBSITE

<https://www.usbr.gov/pn/programs/leavenworth/swisp/index.html>

VIRTUAL MEETING ROOM

<https://virtualpublicmeeting.com/leavenworth-swisp-eis>

SWISP PUBLIC COMMENTS BY EMAIL

[BOR-SHA-PNRLSWISP@usbr.gov](mailto:BOR-SHA-PNRLSWISP@usbr.gov)