



— BUREAU OF —  
RECLAMATION

Welcome to the

# Leavenworth National Fish Hatchery Surface Water Intake Fish Screens and Fish Passage (SWISP) Project

## EIS Public Scoping Q & A Video Teleconference

May 18, 2020





# Purpose of the Video Teleconference

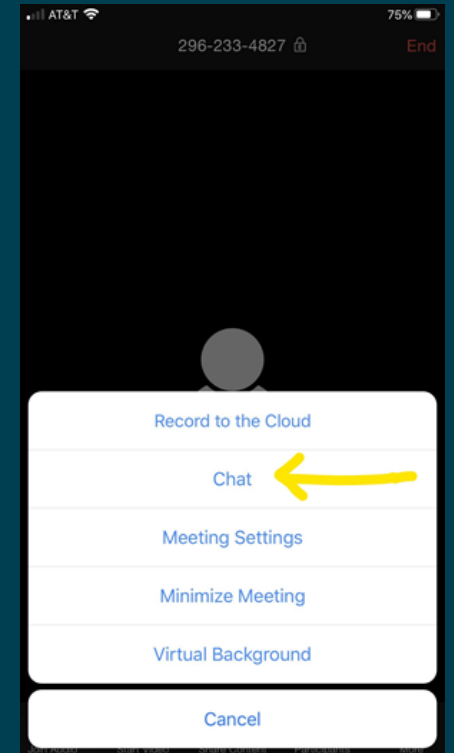
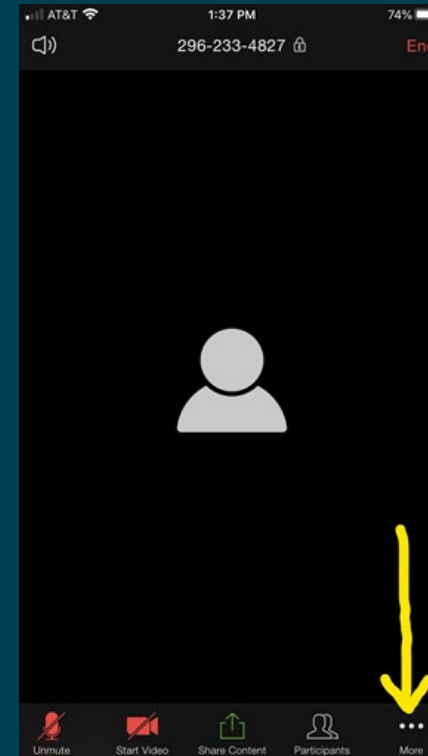
- To provide an overview and answer any questions you may have about the SWISP Project Environmental Impact Statement (EIS)
- We will review:
  - ✓ Purpose and Need of the EIS
  - ✓ Project Background
  - ✓ Proposed Action
  - ✓ Public Comment Process



# Video Teleconference Communication

- Camera and mic controls will be restricted to meeting hosts only.
- Questions will be answered at the end of the presentation.
- To submit questions, click the Chat icon on the bottom panel to open the chat window.
- After the window opens, type your question in the box and click 'enter'.
- We will do our best to respond.
- Official comments should be submitted through project email or postal address, which we'll cover at the end.
- This video teleconference will be recorded and posted on our website:

<https://www.usbr.gov/pn/programs/leavenworth/swisp/index.html>





# Introduction and Background





# Purpose and Need

- Meet terms and conditions of 2017 BiOp by May 2023
- Minimize take of ESA-listed fish species
- Provide fish passage that complies with current regulatory criteria
- Ensure safe, efficient, and reliable delivery of hatchery full surface water rights from Icicle Creek





# Cooperating and Participating Agencies

Cooperating Agencies: U.S. Fish and Wildlife Service, U.S. Army Corps of Engineers

## Participating Agencies:

- Chelan County
- Colville Tribes Fish and Wildlife Department
- NOAA Fisheries
- Washington Department of Archaeology and Historic Preservation
- Washington Department of Ecology
- Washington Department of Fish and Wildlife
- Washington Department of Natural Resources
- Yakama Nation Fisheries

## Interested Parties:

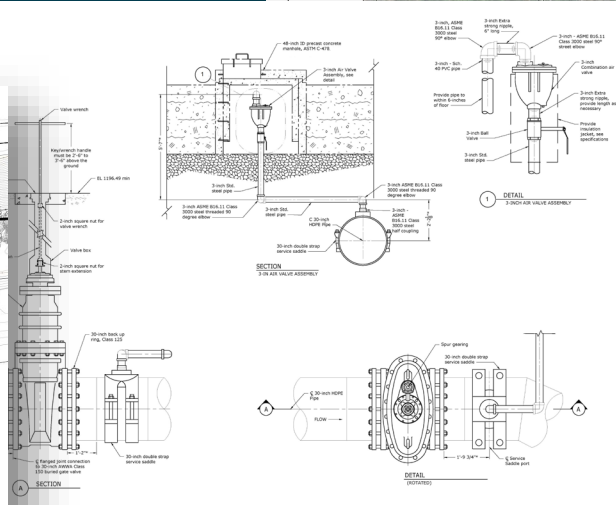
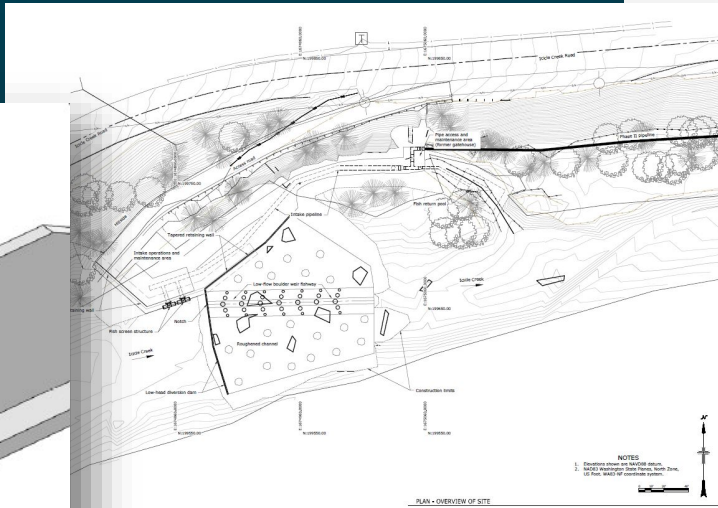
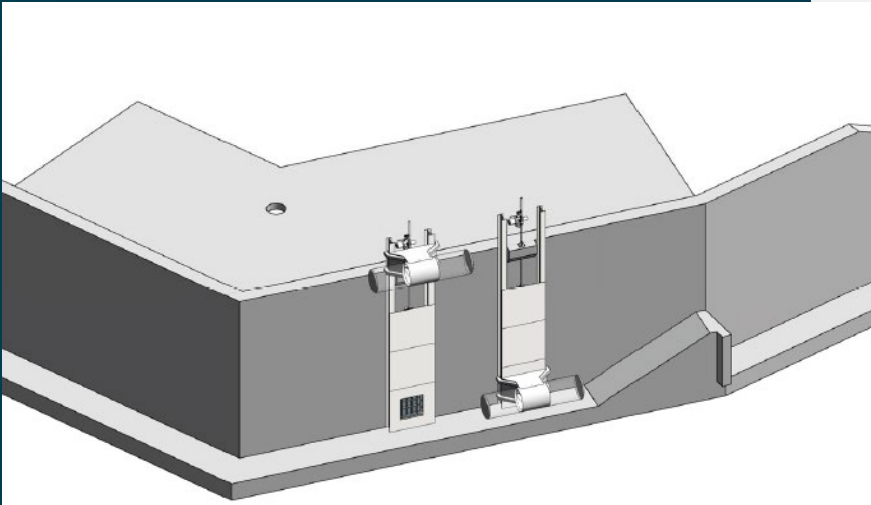
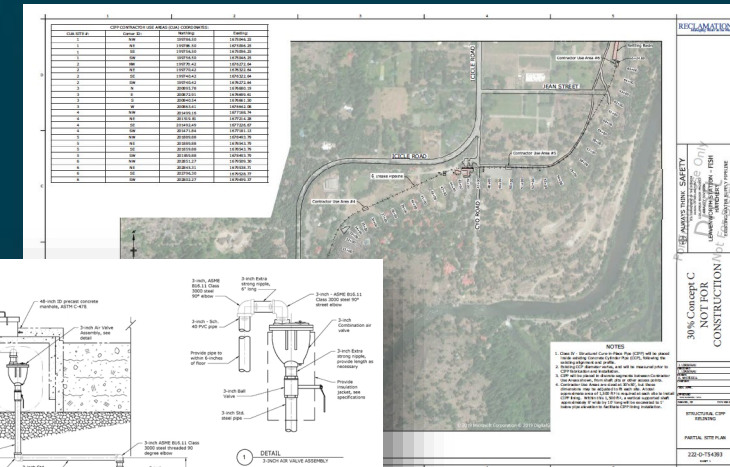
- Cascade Orchard Irrigation Company
- City of Leavenworth
- Icicle Creek Center for the Arts
- Icicle Peshastin Irrigation District
- Icicle River RV Resort
- Icicle Watershed Council
- Icicle Workgroup
- Sleeping Lady Mountain Resort
- Trout Unlimited
- Wild Fish Conservancy Northwest
- Washington Water Trust

## One Federal Decision



# Proposed Action

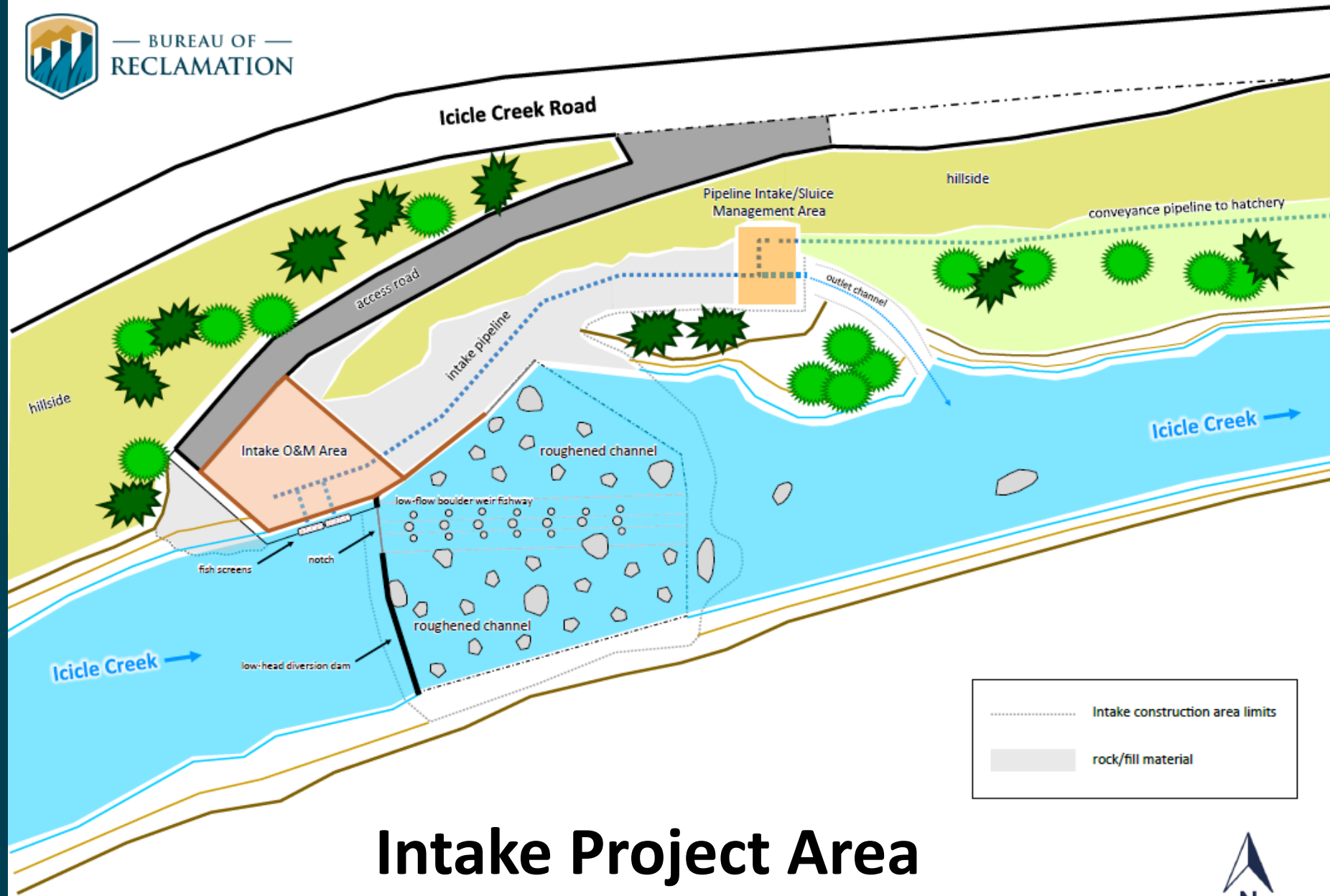
- Instream NMFS-compliant fish screens
- Roughened channel with low-flow boulder weir fishway
- Intake Operations & Maintenance Area
- Pipeline Isolation/Sluicing Management Area
- Replace/line conveyance pipeline to hatchery



# Leavenworth National Fish Hatchery Surface Water Intake Fish Screens and Fish Passage (SWISP) Project



BUREAU OF  
RECLAMATION



## Intake Project Area

### Proposed Action

- Instream fish screens
- Roughened channel and fishway
- Pipeline replacement and lining





# Leavenworth National Fish Hatchery (LNFH) Surface Water Intake Fish Screens and Fish Passage (SWISP) Project



**Proposed Action**

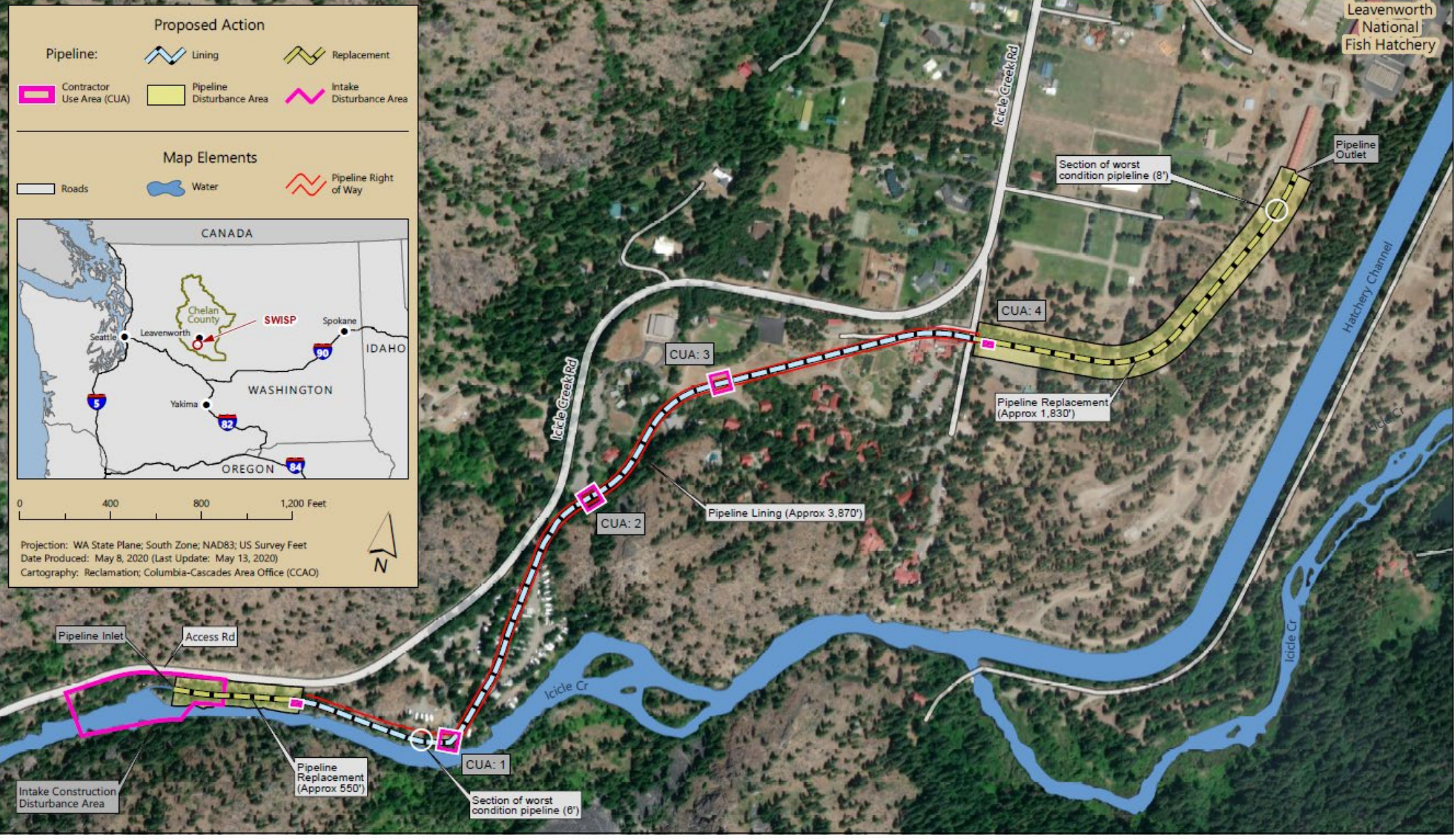
Pipeline: Lining Replacement

Contractor Use Area (CUA) Pipeline Disturbance Area Intake Disturbance Area

**Map Elements**

Roads Water Pipeline Right of Way

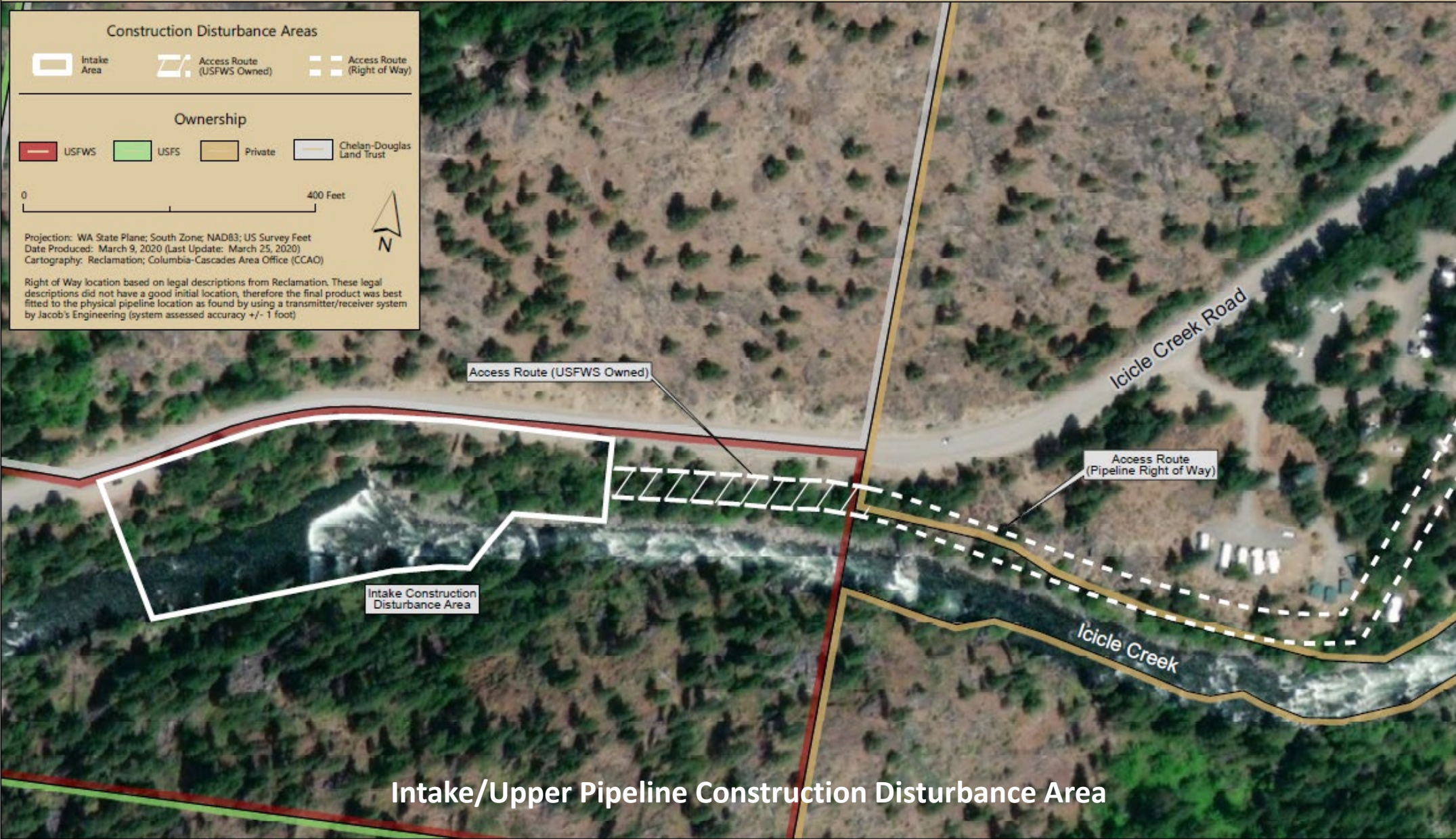
Projection: WA State Plane; South Zone; NAD83; US Survey Feet  
Date Produced: May 8, 2020 (Last Update: May 13, 2020)  
Cartography: Reclamation; Columbia-Cascades Area Office (CCAO)





# Leavenworth National Fish Hatchery (LNFH)

## Surface Water Intake Fish Screens and Fish Passage Project Construction Disturbance Area





# Scoping Period

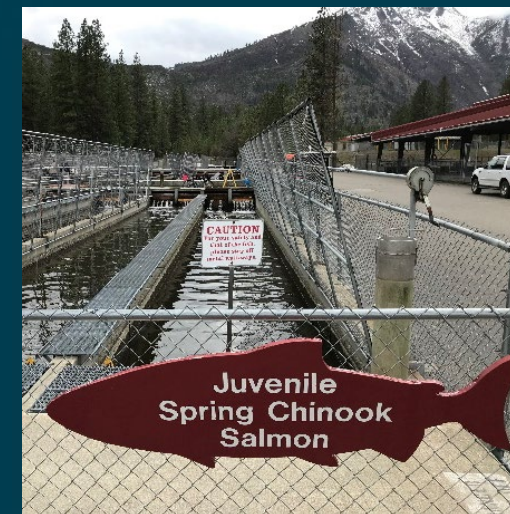
## April 24 – May 26, 2020



NOI published in Federal Register ————— ■ 4/24/2020

Q&A Video Teleconference ————— ■ 5/18/2020

Virtual Public Meeting Room —————  
4/24/2020 - 5/26/2020





# Public Scoping Comments

Scoping comments are due by **May 26, 2020**

Virtual Public Meeting Room:

<https://virtualpublicmeeting.com/leavenworth-swisp-eis>

Email comments to:

[BOR-SHA-PNRLSWISP@usbr.gov](mailto:BOR-SHA-PNRLSWISP@usbr.gov)

Submit written comments to:

Jason Sutter, EIS Team Lead

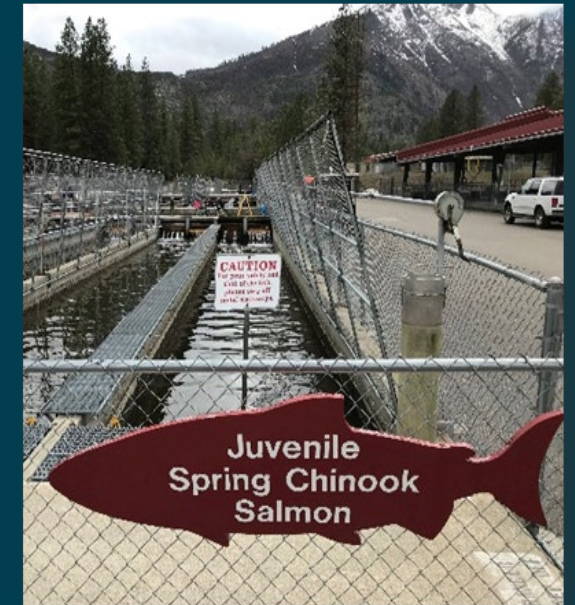
Bureau of Reclamation, Columbia–Pacific Northwest Regional Office

1150 N. Curtis Road

Boise, ID 83706

Bureau of Reclamation Project Website:

<https://www.usbr.gov/pn/programs/leavenworth/swisp/index.html>







Leavenworth National  
Fish Hatchery

SWISP EIS

# What's Next

Public Scoping

April 24 – May 26

Publish Draft EIS

Fall/Winter 2020

Public Review of Draft EIS

Winter 2020/21

Publish Final EIS

Spring 2021

Sign Record of Decision

Spring 2021



— BUREAU OF —  
RECLAMATION





Leavenworth National  
Fish Hatchery

**SWISP EIS**

**Thank you!**

- We will now answer your questions using the chat function
- Your phones will continue to be muted



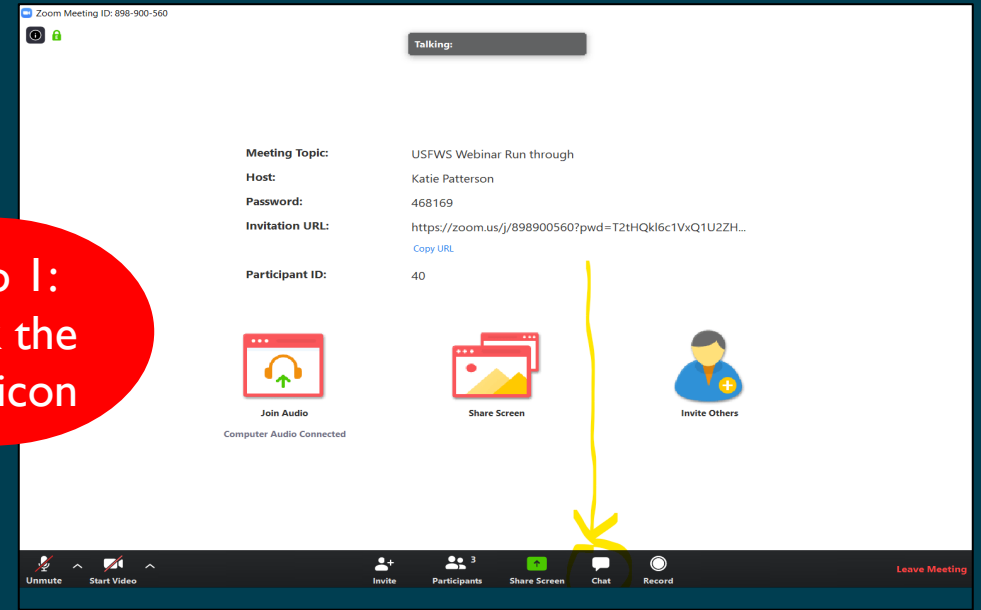
— BUREAU OF —  
RECLAMATION



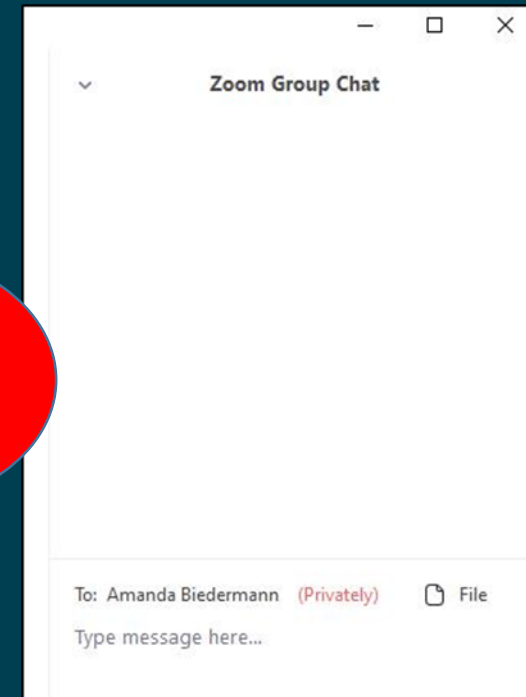
# Q&A Guidelines

- After the speaker is finished, if you have a question, please click the “chat” icon at the bottom of your Zoom screen to write and send your question to the host of the meeting (Morgan Trieger) [See Step 1 and Step 2].
- The host will read the question for all participants to hear.
- A Reclamation or USFWS staff member will respond to your question aloud for all participants to hear.
- We will try to answer questions in the order they are received.
- Please limit questions to those related to the NEPA process.

Step 1:  
Click the  
chat icon



Step 2:  
Message  
your  
question





# Phone-only Participants

- If you are calling in through your phone and you have a question, please press \*9 to “raise your hand” to let staff know you have a question. The host will then unmute you so that you can ask your question.
- You will be muted until you “raise your hand,” so please remember to speak once prompted.
- We will address phone call questions after addressing questions that are sent to the host via the chat function.







Leavenworth National  
Fish Hatchery  
**SWISP EIS**

**BUREAU OF RECLAMATION PROJECT WEBSITE**

<https://www.usbr.gov/pn/programs/leavenworth/swisp/index.html>

**VIRTUAL MEETING ROOM**

<https://virtualpublicmeeting.com/leavenworth-swisp-eis>

**SWISP SCOPING COMMENTS BY EMAIL**

[BOR-SHA-PNRLSWISP@usbr.gov](mailto:BOR-SHA-PNRLSWISP@usbr.gov)



— BUREAU OF —  
RECLAMATION