

Cle Elum Pool Raise

Yakima River Basin Integrated Water Resource Management Plan (Integrated Plan)

November 2013

What is the proposed Cle Elum Pool Raise?

The Cle Elum Pool Raise was authorized for implementation, including construction, under the Yakima River Basin Water Enhancement Project (YRBWEP) Title XII, October 31, 1994. Section 1206 of Title XII includes authorization to:

- Modify the radial gates at Cle Elum Dam to provide an additional 14,600 acre-feet of storage capacity in Lake Cle Elum,
- Provide for shoreline protection of Lake Cle Elum, and
- Provide environmental mitigation for impacts from the Pool Raise, as necessary.

The Pool Raise consists of raising the maximum water level of Cle Elum Lake by 3 feet, increasing the volume of available storage in Cle Elum Lake by approximately 14,600 acre-feet, which would be used to improve instream flows for fish.

How does the Pool Raise relate to the Integrated Plan?

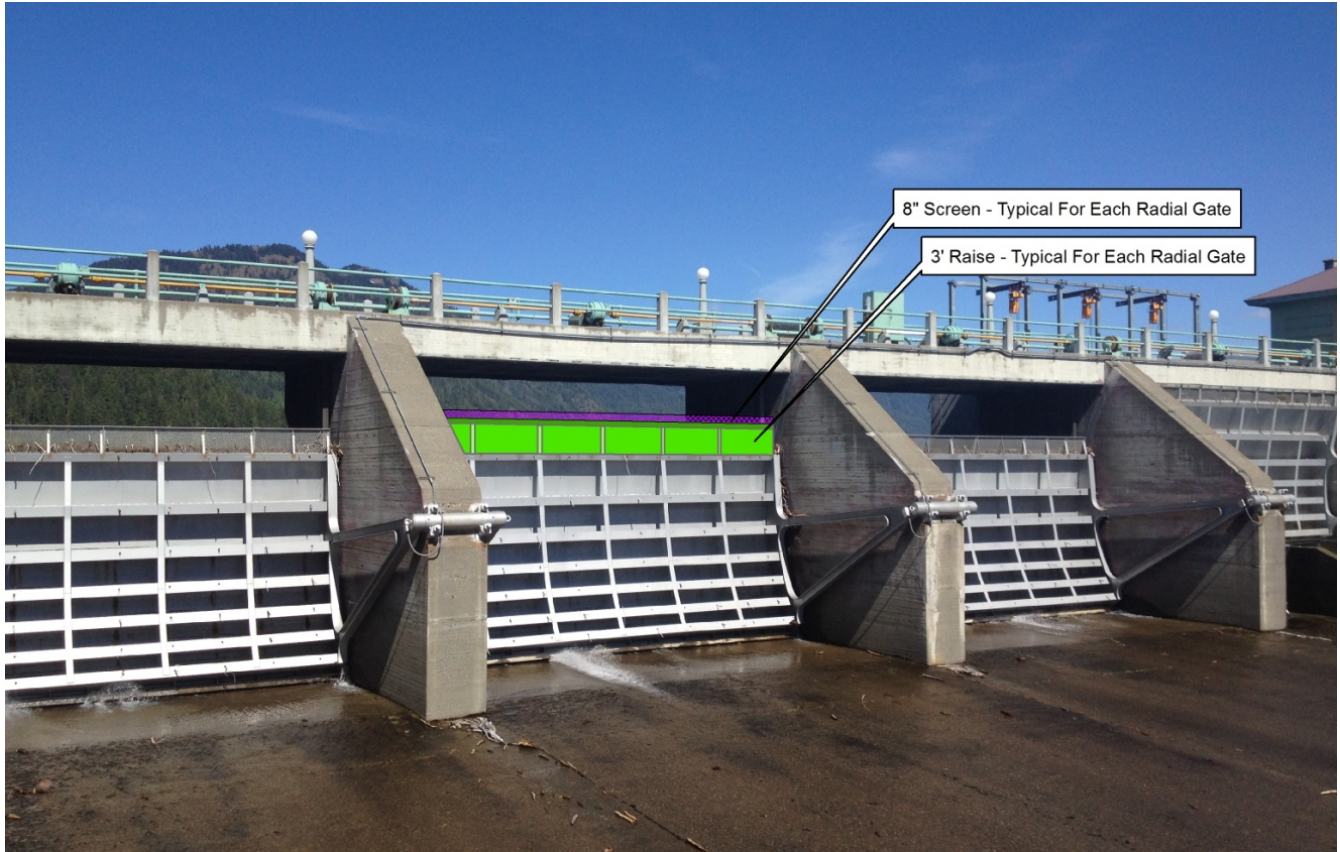
The Pool Raise is included in the Structural and Operational Changes element of the Integrated Plan. The site-specific environmental impact statement (EIS) produced at the end of this study will tier off the March 2012, *Yakima River Basin Integrated Water Resource Management Plan Final Programmatic EIS*.

What alternatives are being considered for the project?

The proposed alternative would modify the existing radial gates to raise the water level on the gates by approximately 3 feet. Modifications to the radial gates would consist of fabricating and installing 3-foot-high by 37-foot-wide stiffened steel flashboards at each of the five radial gates. An additional 8-inch-high screen would be installed above the 3-foot-high flashboards to catch debris.

The water surface elevation of Cle Elum Lake would be raised from 2,240 feet to 2,243 feet above mean sea level, adding approximately 14,600 acre-feet of storage to the reservoir for annual release. The increased storage capacity would provide greater operational flexibility for instream flows.

In addition, the No Action Alternative is evaluated to form the baseline for evaluating the potential impacts of the Pool Raise action alternative.



Cle Elum Pool Raise Modification (shown on one gate for illustrative purposes)