

# RECLAMATION

*Managing Water in the West*

## Henry's Fork Watershed Field Tour

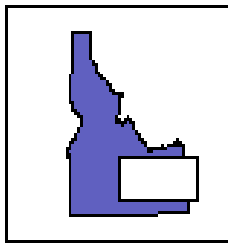
Island Park Reservoir Operations

August 11, 2014

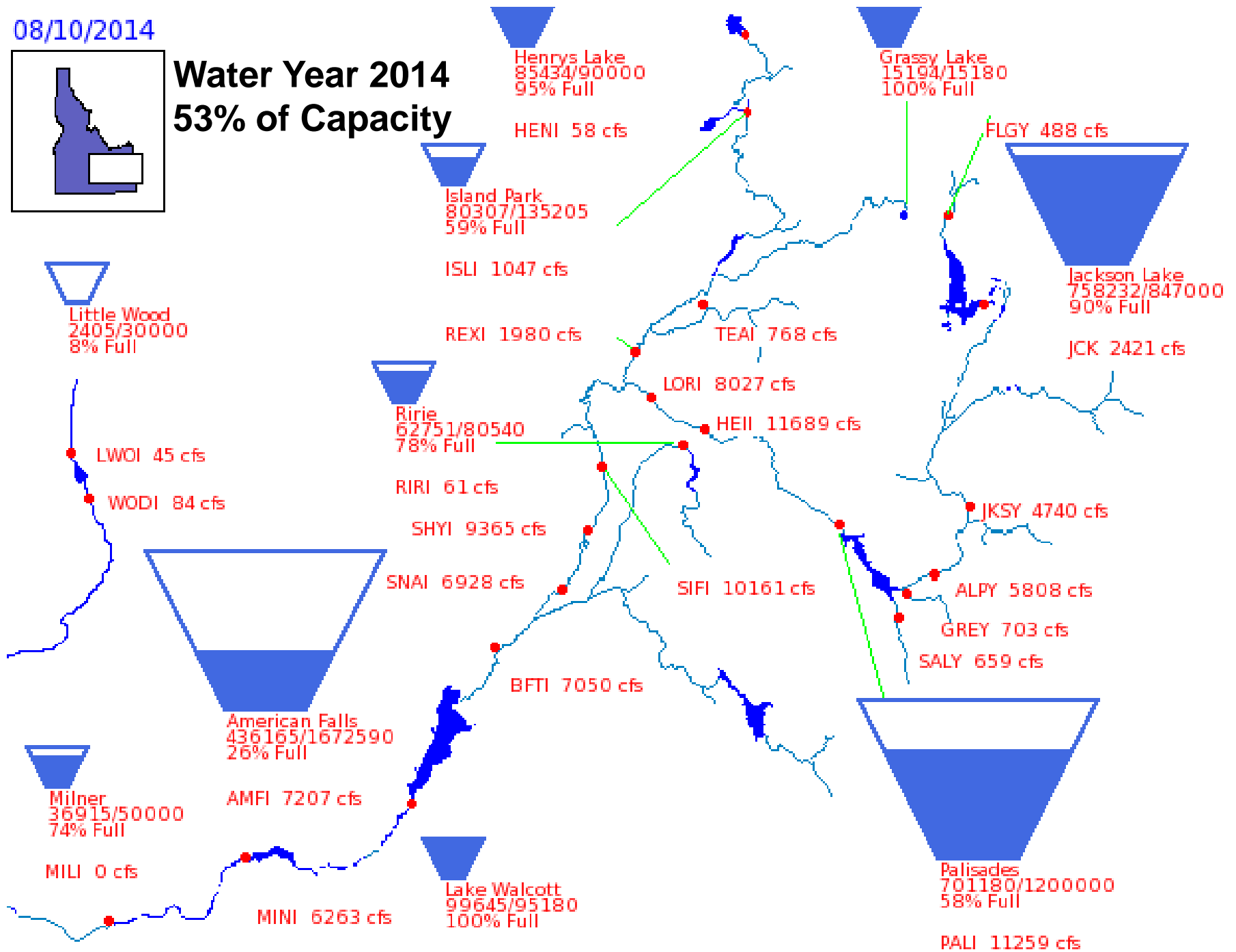


U.S. Department of the Interior  
Bureau of Reclamation

08/10/2014

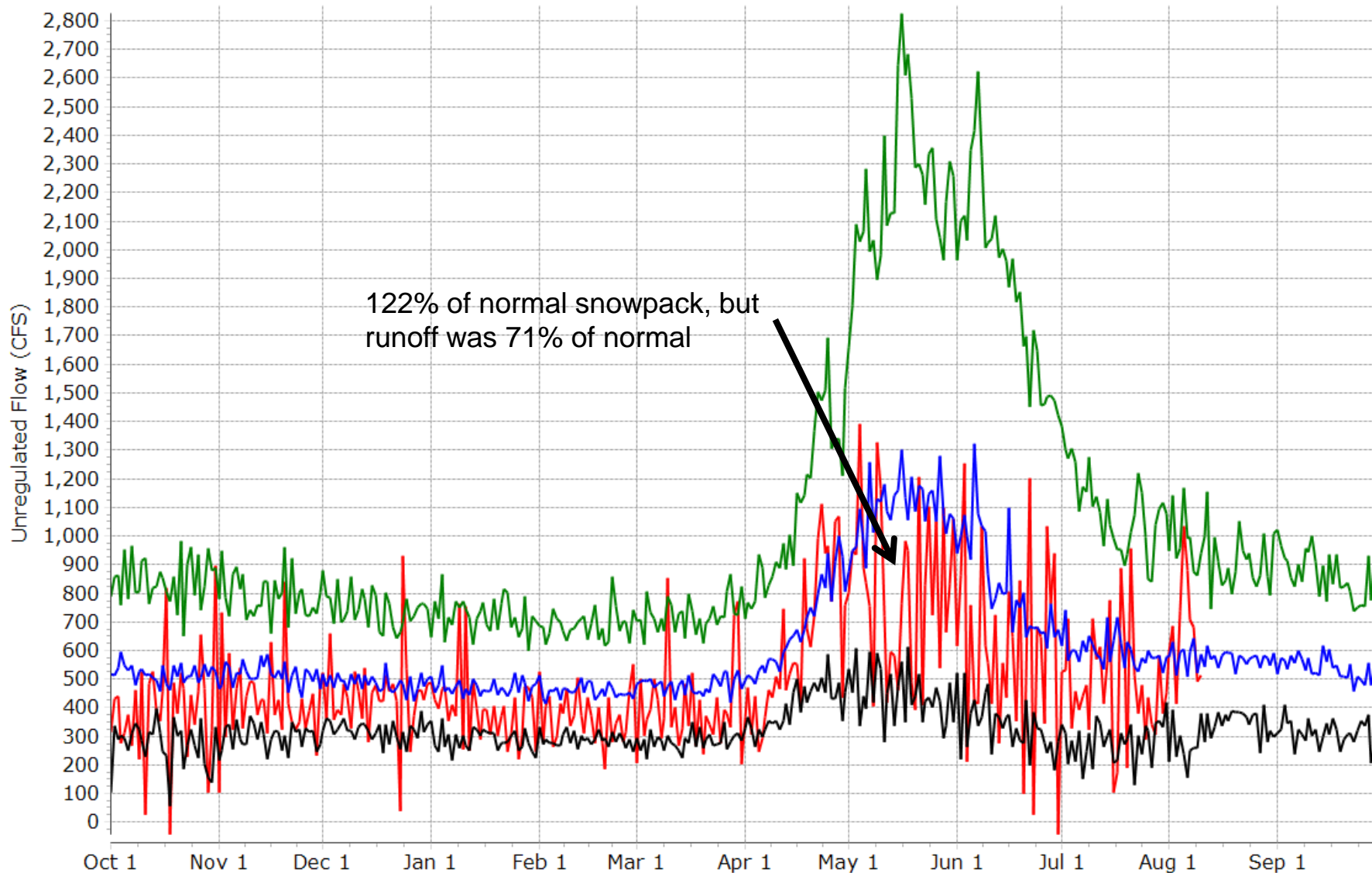


# Water Year 2014 53% of Capacity



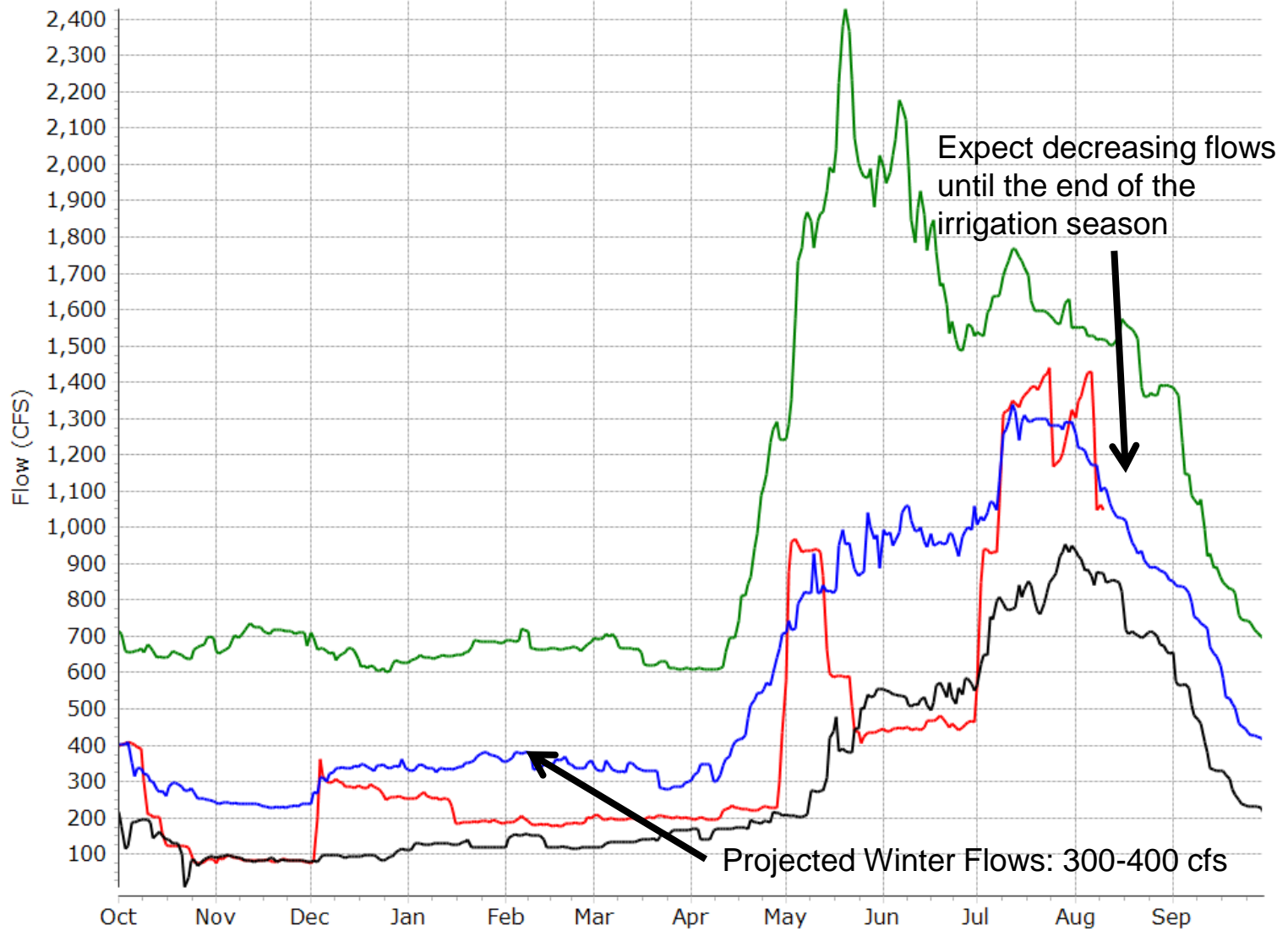
# Island Park Dam and Reservoir

Water Year 2014 10% Exceedance 50% Exceedance 90% Exceedance



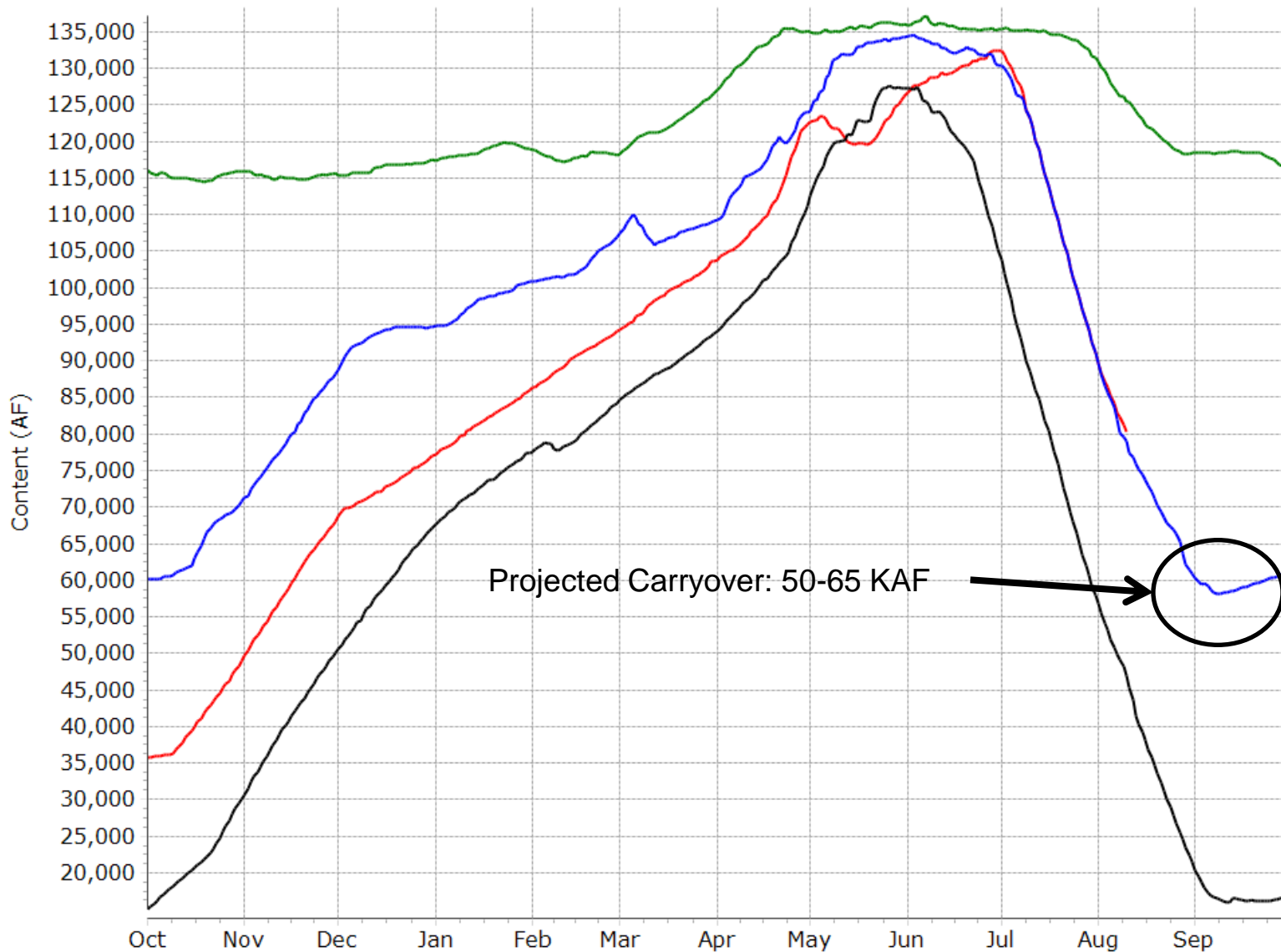
# Henry's Fork near Island Park, ID

Water Year 2014 10% Exceedance 50% Exceedance 90% Exceedance



# Island Park Dam and Reservoir

Water Year 2014 10% Exceedance 50% Exceedance 90% Exceedance



# RECLAMATION

# Conclusion

- Recent monsoonal moisture has helped the Upper Snake System
- Island Park carryover is projected to be 50-60 KAF
- Winter flows are projected to be 300-400 cfs
- As the irrigation season comes to an end Island Park flows will continue to decrease