

RECLAMATION

Managing Water in the West

FCRPS BiOp Tributary Habitat Expert Panel Update



February 23, 2012



U.S. Department of the Interior
Bureau of Reclamation

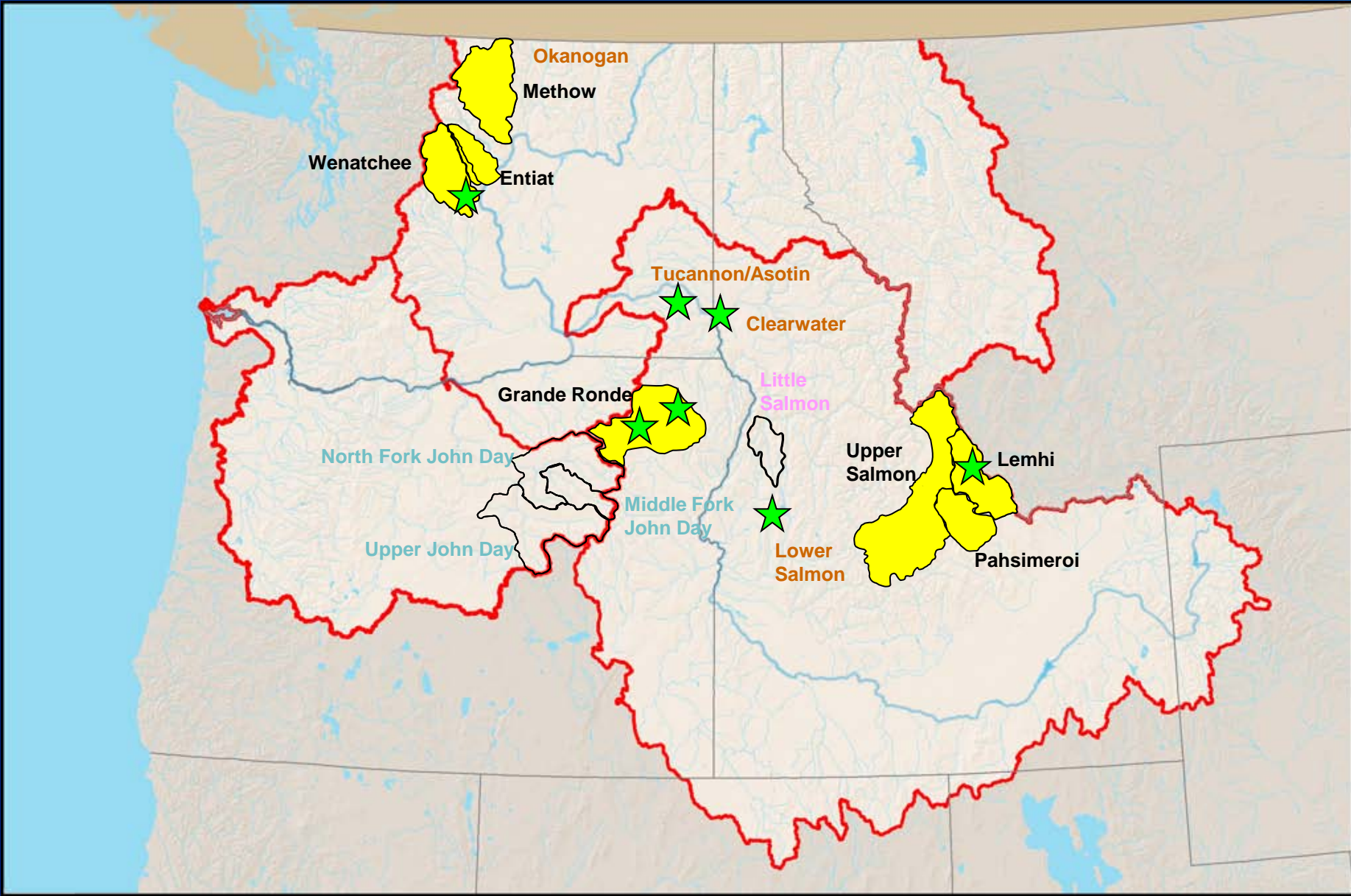
Goals

- **Overview of preparations for next Expert Panel workshop**
- **What's the same as last time**
- **What's different this time**
- **What's next**

Reporting Schedules

<u>Process</u>	<u>Calendar Year</u>	<u>2007</u>	<u>2008</u>	<u>2009</u>	<u>2010</u>	<u>2011</u>	<u>2012</u>	<u>2013</u>	<u>2014</u>	<u>2015</u>	<u>2016</u>	<u>2017</u>	<u>2018</u>
Tributary Habitat RPA Implementation Cycle		2007-09			2010-12			2013-15			2016-18		
Annual Progress Report (due by 9/30 of next calendar year)		06-07 included in 2008 APR ★	★	★	★	★	★	★	★	★	★	★	★
Expert Panel					Timeframe = 2010 - 2012 (Planning occurs in 2008 & 2009)			Timeframe = 2013 - 2015 (Planning occurs in 2011 & 2012)			Timeframe = 2016 - 2018 (Planning occurs in 2015 & 2016)		
Implementation Plan		Included in the 2007 BA ★		Timeframe = 2010 - 2012 (Due 12/31/09) ★			Timeframe = 2013 - 2015 (Due 12/31/12) ★			Timeframe = 2016 - 2018 (Due 12/31/15) ★			
Comprehensive Evaluation Report		Timeframe = 2007 - 2012 (Due 6/30/13)						Timeframe = 2007 - 2015 (Due 6/30/16) ★			No Report Due ★		
Other Events		AMIP (9/11/09) 2010 BiOp (5/20/10)						2014 BiOp (1/1/14)					

Expert Panel Locations



Goals

- Overview of preparations for next Expert Panel workshop
- **What's the same as last time**
- **What's different this time**
- **What's next**

What's the Same?

- Action Agencies must meet FCRPS BiOp requirements



RECLAMATION

Table 5. Estimated Habitat Quality Improvements

ESU	Major Population Group	Population	Estimated Percentage Habitat Quality Improvement of 2007-2009 Actions	Total Estimated Percentage Habitat Quality Improvement of 2007-2018 Actions
Snake River Spring/Summer Chinook	Grand Ronde/Imnaha	Catherine Creek	4	23
		Lostine/Wallowa River	2	2 *
		Grand Ronde River upper mainstem	2	23
		Imnaha River mainstem	1	1 *
	Middle Fork Salmon River	Big Creek	1	1 *
	South Fork Salmon River	Secesh River	1	1 *
		South Fork Salmon River Mainstem	<1	<1 *
	Lower Snake	Tucannon River	7	17
	Upper Salmon River	East Fork Salmon River	1	1 *
		Lemhi River	7	7 *
		Pahsimeroi River	41	41 *
		Salmon River lower mainstem below Redfish Lake	1	1 *
		Salmon River upper mainstem above Redfish Lake	14	14 *
		Valley Creek	1	1 *
		Yankee Fork	10	30
Upper Columbia Spring Chinook	Upper Columbia – Below Chief Joseph	Entiat River	10	22
		Methow River	2	6
		Wenatchee River	1	3

Table 5. Estimated Habitat Quality Improvements (continued)

ESU	Major Population Group	Population	Estimated Percentage Habitat Quality Improvement of 2007-2009 Actions	Total Estimated Percentage Habitat Quality Improvement of 2007-2018 Actions
Middle Columbia Steelhead	Cascades Eastern Slope Tributaries	Deschutes River – eastside	1	1 *
		Deschutes River – Westside	<1	<1 *
		Fifteen mile Creek (winter run)	<1	<1 *
		Klickitat River	4	4 *
	John Day River	John Day River lower mainstem tributaries	<1	<1 *
		John Day River upper mainstem	<1	<1 *
		Middle Fork John Day River	<1	<1 *
		North Fork John Day River	<1	<1 *
		South Fork John Day River	1	1 *
	Umatilla and Walla Walla River	Touchet River	4	4 *
		Umatilla River	4	4 *
		Walla Walla River	4	4 *
	Yakima River Group	Naches River	4	4 *
		Satus Creek	4	4 *
		Toppenish	4	4 *
		Yakima River upper mainstem	4	4 *
Snake River Steelhead	Clearwater River	Lochsa River	6	16
		Lolo Creek	8	12
		Selway River	<1	<1
		South Fork Clearwater River	5	14

Table 5. Estimated Habitat Quality Improvements (continued)

ESU	Major Population Group	Population	Estimated Percentage Habitat Quality Improvement of 2007-2009 Actions	Total Estimated Percentage Habitat Quality Improvement of 2007-2018 Actions
Snake River Steelhead	Grand Ronde River	Grand Ronde River lower mainstem tributaries	<1	<1 *
		Grand Ronde River upper mainstem	4	4 *
		Joseph Creek (OR)	<1	<1 *
		Joseph Creek (WA)	4	4 *
		Wallowa River	<1	<1 *
	Hells Canyon	Hells Canyon		
	Imnaha River	Imnaha River		*
	Lower Snake	Asotin Creek	4	4 *
		Tucannon River	5	5 *
	Salmon River	Lower Middle Fork mainstem and tribs (Big, Camas, and Loon Creeks)	1	2
		East Fork Salmon River	2	2 *
		Lemhi River	3	3 *
		Pahsimeroi River	9	9 *
		Salmon River upper mainstem	6	6 *
		Secesh River	1	6
South Fork Salmon River		<1	1	
Upper Columbia Steelhead	Upper Columbia River – below Chief Joseph	Entiat River	6	8
		Methow River	2	4
		Okanogan River	12	14
		Wenatchee River	1	4

* The Action Agencies may provide funding and/or technical assistance for replacement projects should they become necessary for the Action Agencies to achieve equivalent MPG or ESU survival benefits.

Goals

- Overview of preparations for next Expert Panel workshop
- What's the same as last time
- **What's different this time**
- What's next

What's Different?

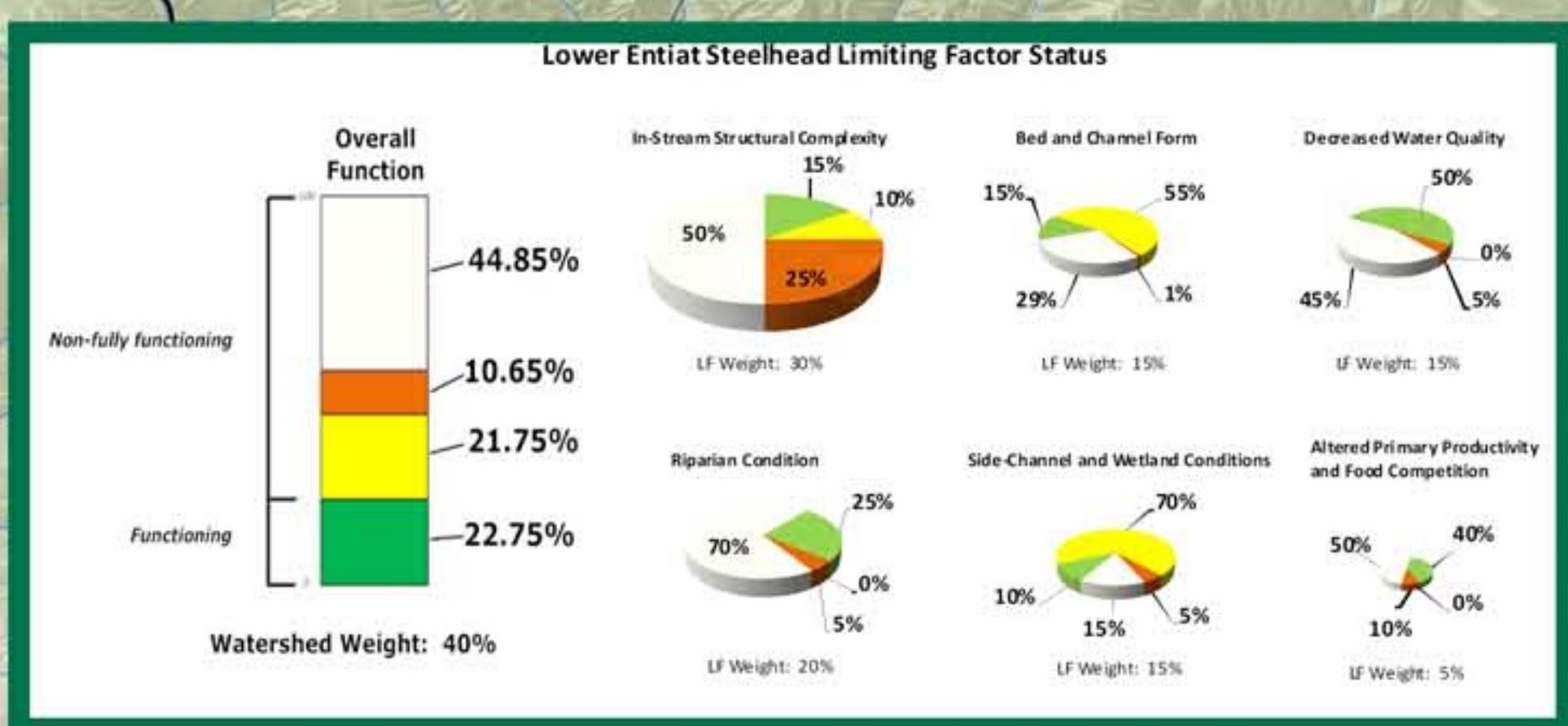
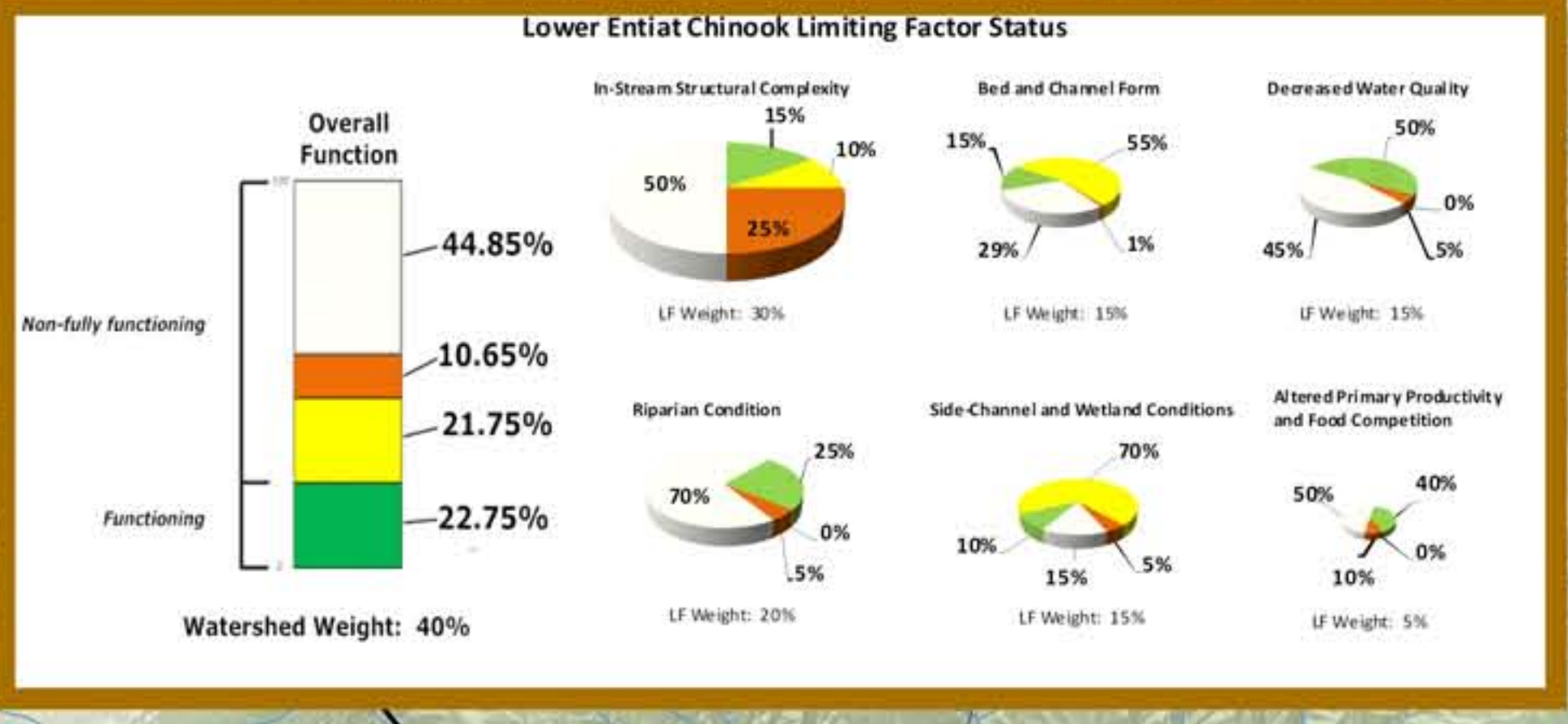
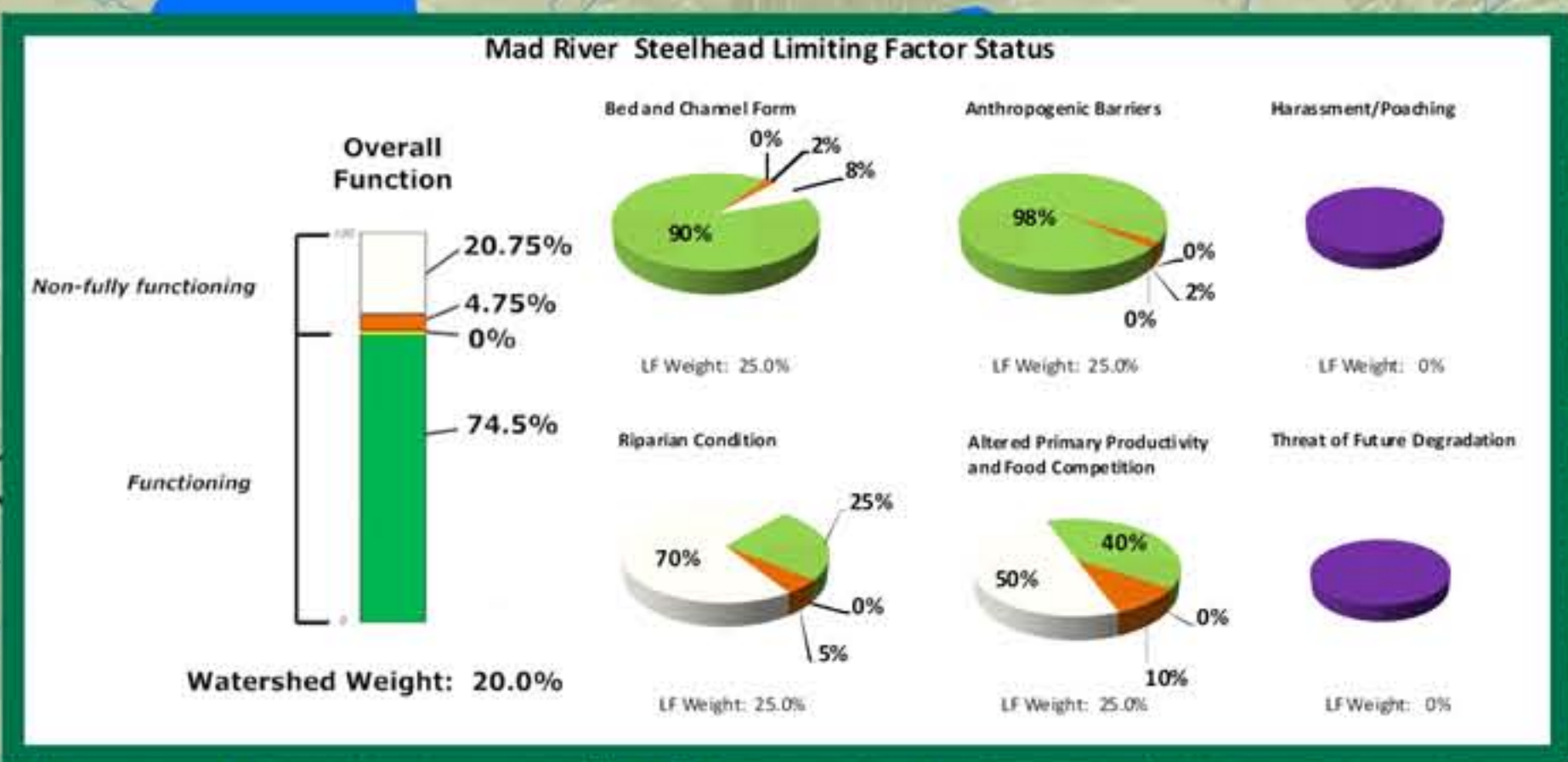
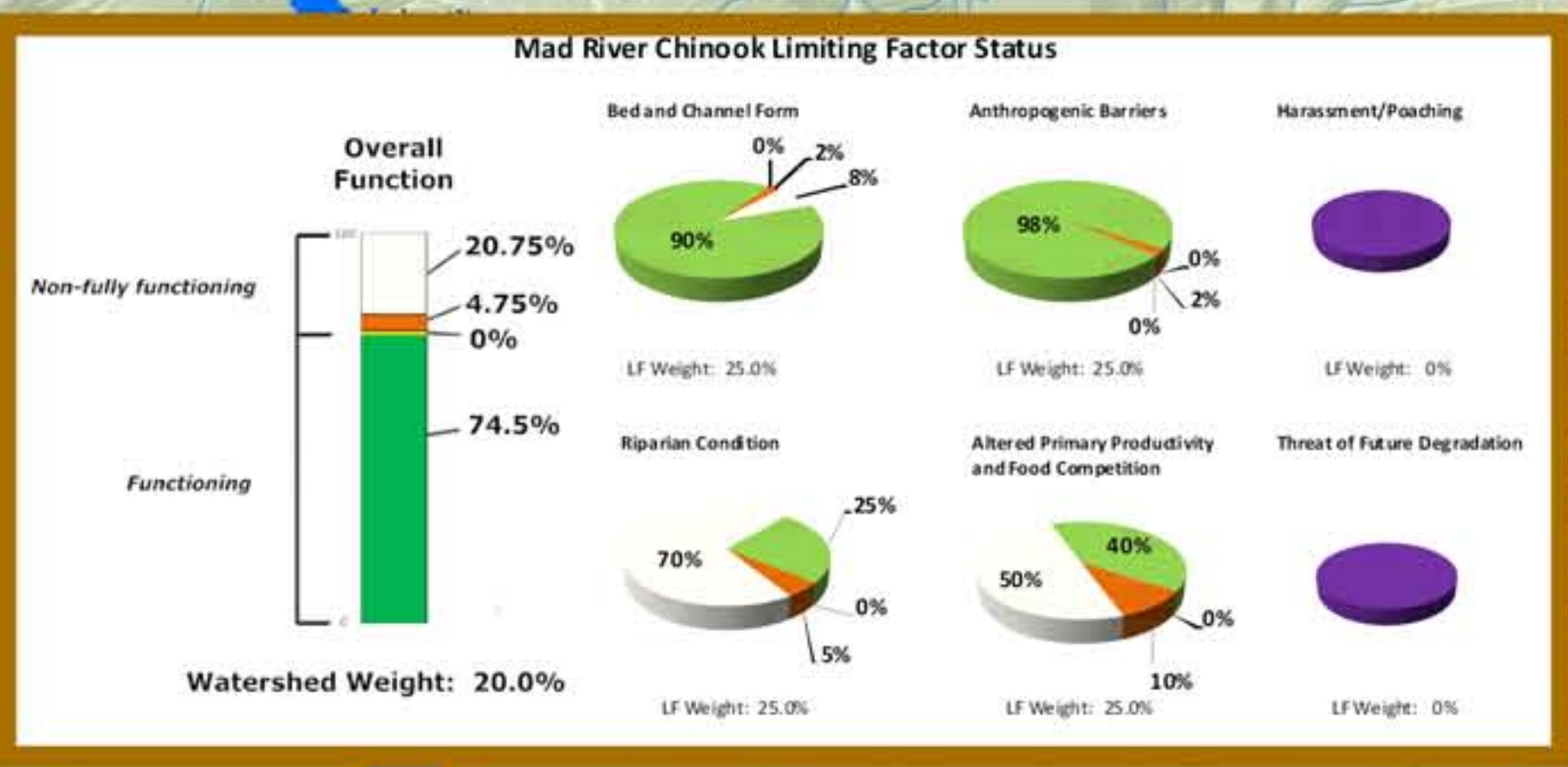
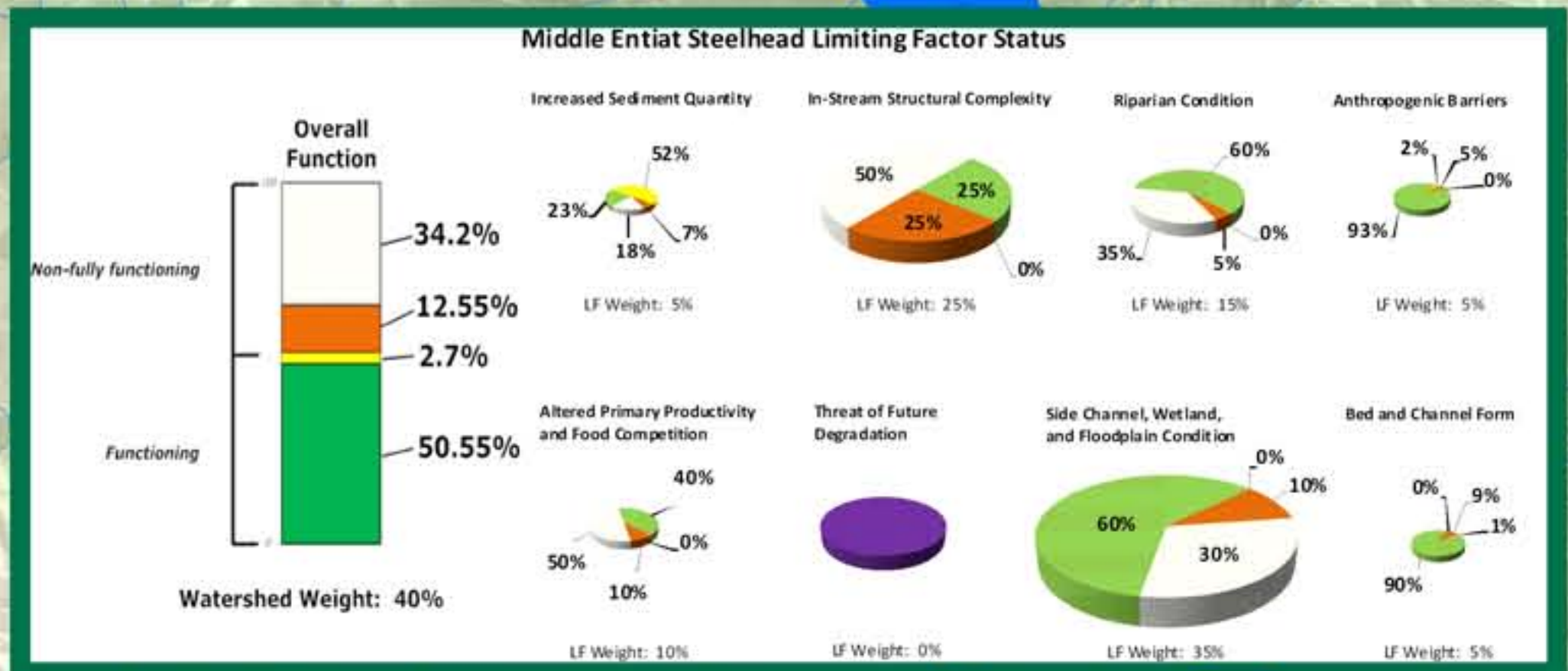
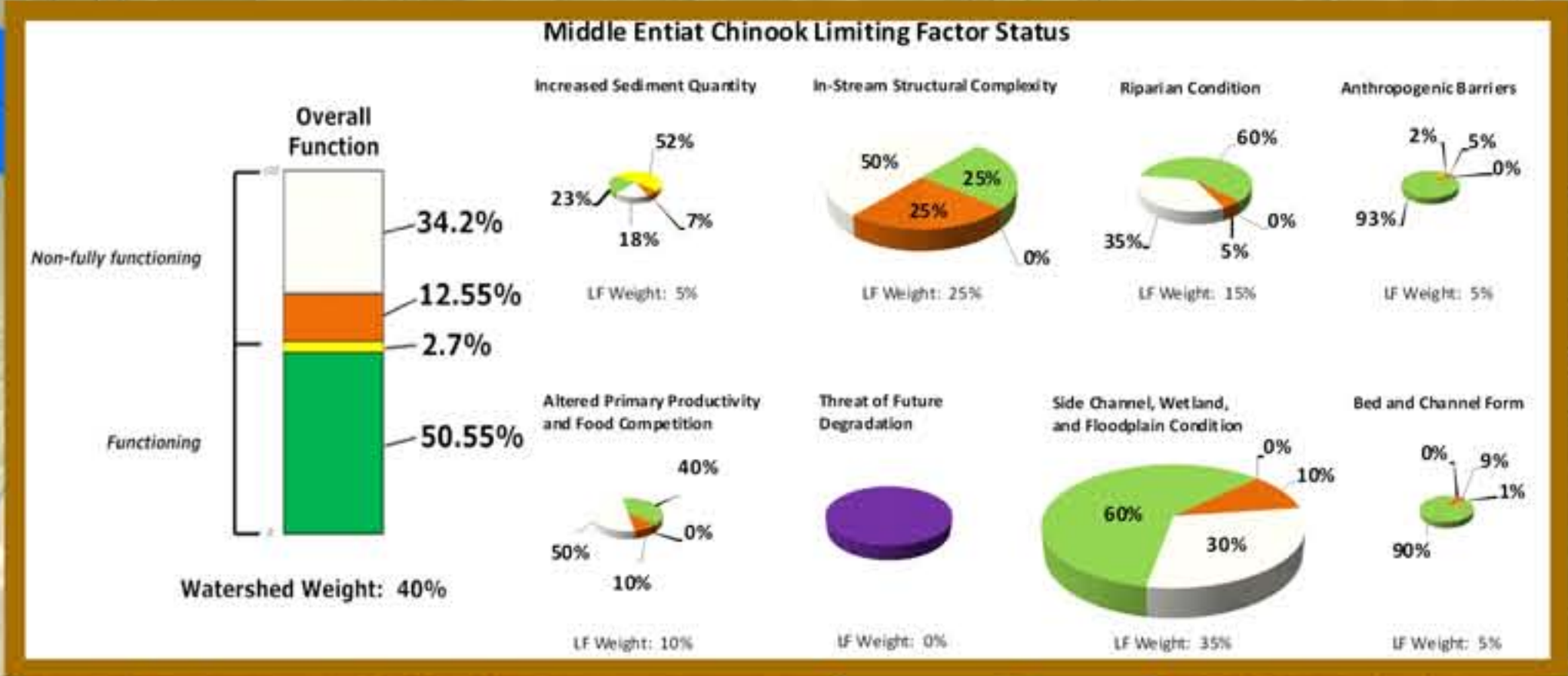
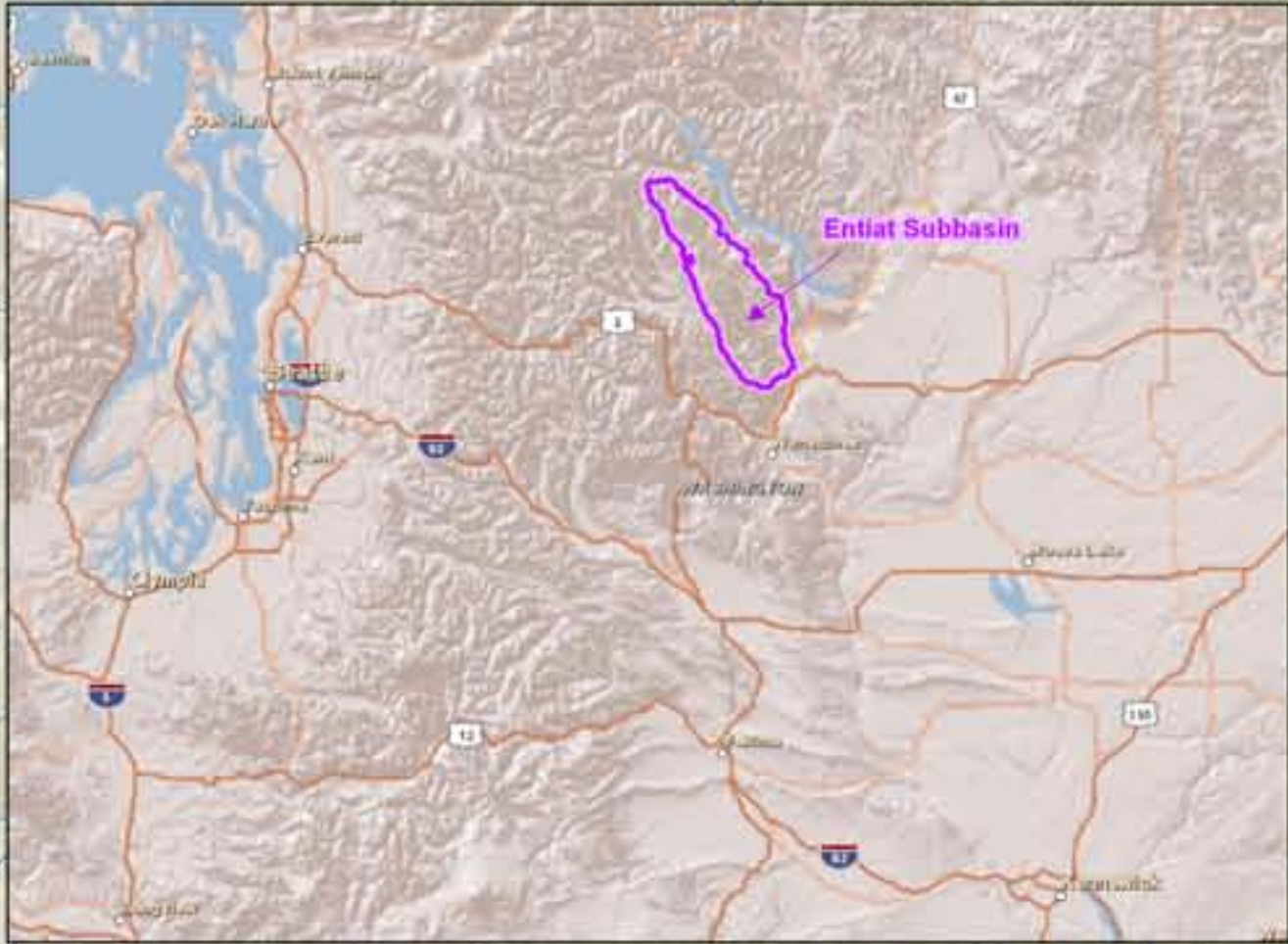
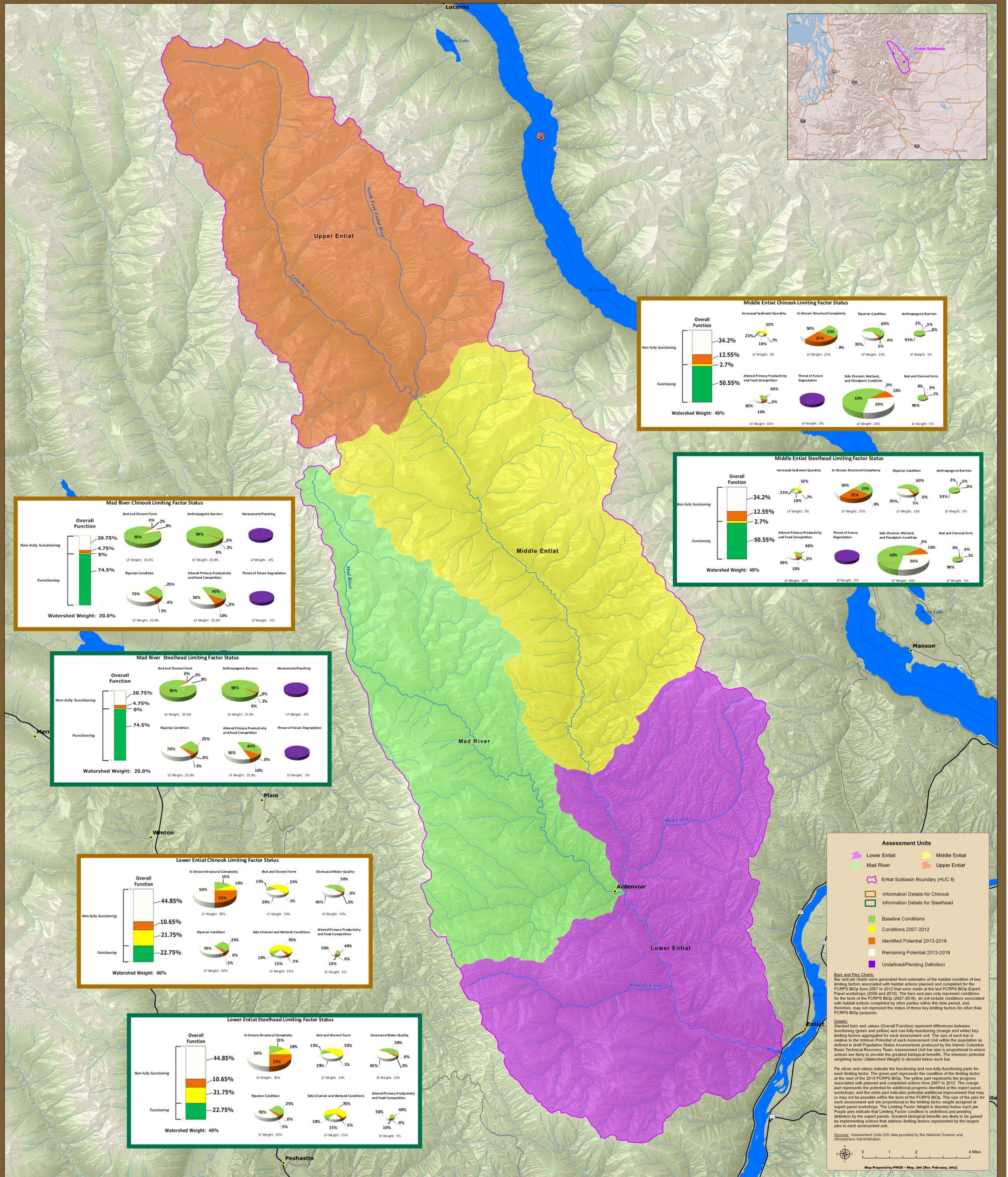
- 2009 AMIP
- 2010 BiOp
- August 8, 2011 Court Order
- 2014 BiOp

Goals

- Overview of preparations for next Expert Panel workshop
- What's the same as last time
- What's different this time
- What's next

What's Next?

- **Workshop pre-mtgs**
 - **Transition to Oct 11 NOAA list of Standardized Limiting Factors**
 - **Pie maps**



Assessment Units

- Lower Entiat
- Middle Entiat
- Mad River
- Upper Entiat

Entiat Subbasin Boundary (HUC 8)

Information Details for Chinook

Information Details for Steelhead

Baseline Conditions

Conditions 2007-2012

Identified Potential 2013-2018

Remaining Potential 2013-2018

Undefined/Pending Definition

Bars and Pies Charts:
Bar and pie charts were generated from estimates of the habitat condition of key limiting factors associated with habitat actions planned and completed for the FCRPS BiOp from 2007 to 2012 that were made at the last FCRPS BiOp Expert Panel workshops (2009 and 2010). The bars and pies only represent conditions for the Intrinsic Potential of each Assessment Unit within the population as defined in draft Population Status Assessments produced by the Interior Columbia Basin Technical Recovery Team. Assessment Unit bar size is proportional to where actions are likely to provide the greatest biological benefits. The intrinsic potential weighting factor (Watershed Weight) is denoted below each bar.

Details:
Stacked bars and values (Overall Function) represent differences between functioning (green and yellow) and non-fully-functioning (orange and white) key limiting factors aggregated for each assessment unit. The size of each bar is relative to the Intrinsic Potential of each Assessment Unit within the population as defined in draft Population Status Assessments produced by the Interior Columbia Basin Technical Recovery Team. Assessment Unit bar size is proportional to where actions are likely to provide the greatest biological benefits. The intrinsic potential weighting factor (Watershed Weight) is denoted below each bar.

Pie slices and values indicate the functioning and non-fully-functioning parts for each limiting factor. The green part represents the conditions of the limiting factor at the start of the 2010 FCRPS BiOp. The yellow part represents the progress associated with planned and completed actions from 2007 to 2012. The orange part represents the potential for additional progress identified at the expert panel workshops, and the white part indicates potential additional improvement that may or may not be possible within the term of the FCRPS BiOp. The size of the pie for each assessment unit is proportional to the limiting factor weight assigned at expert panel workshops. The Limiting Factor Weight is denoted below each pie. Purple pies indicate that Limiting Factor condition is undefined and pending definition by the expert panels. Greatest biological benefits are likely to be gained by implementing actions that address limiting factors represented by the largest pies in each assessment unit.

Sources: Assessment Units GIS data provided by the National Oceanic and Atmospheric Administration.

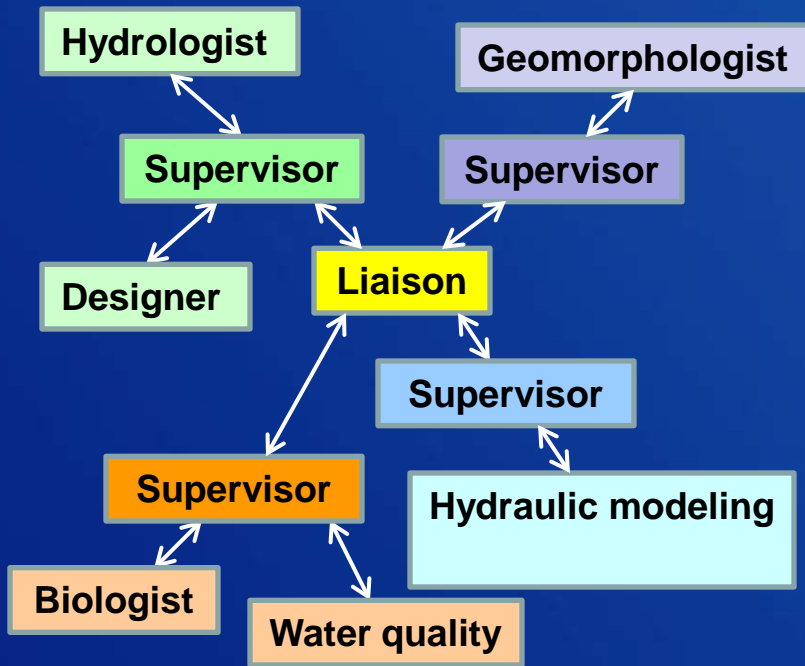
Map Prepared by PHGII - May, 2011 (Rev. February, 2012)

What's Next?

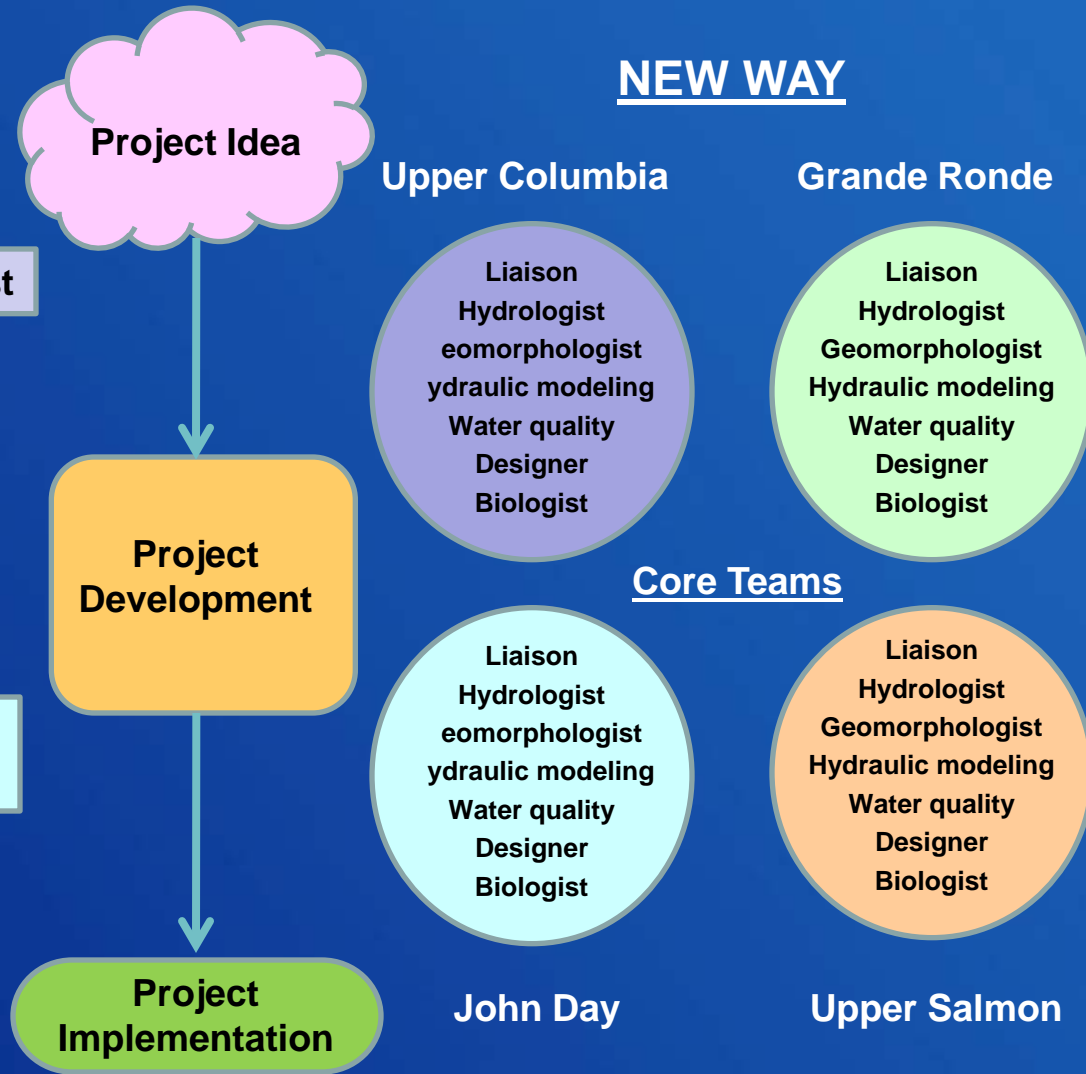
- **Workshop pre-mtgs**
 - **Transition to Oct 11 NOAA list of Standardized Limiting Factors**
 - **Pie maps**
 - **Develop “look back” at completed 2009-2012 and “look forward” to potential 2013-18 project lists**

Organizational Changes

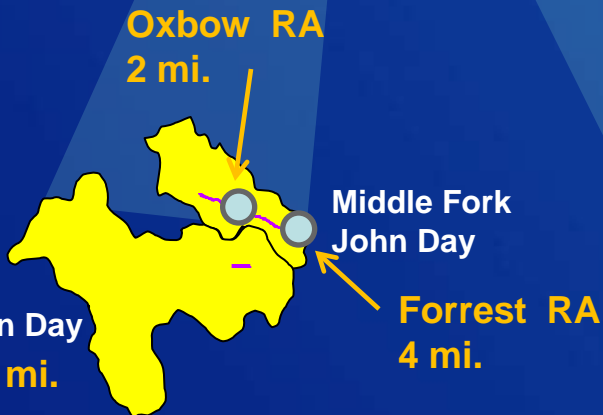
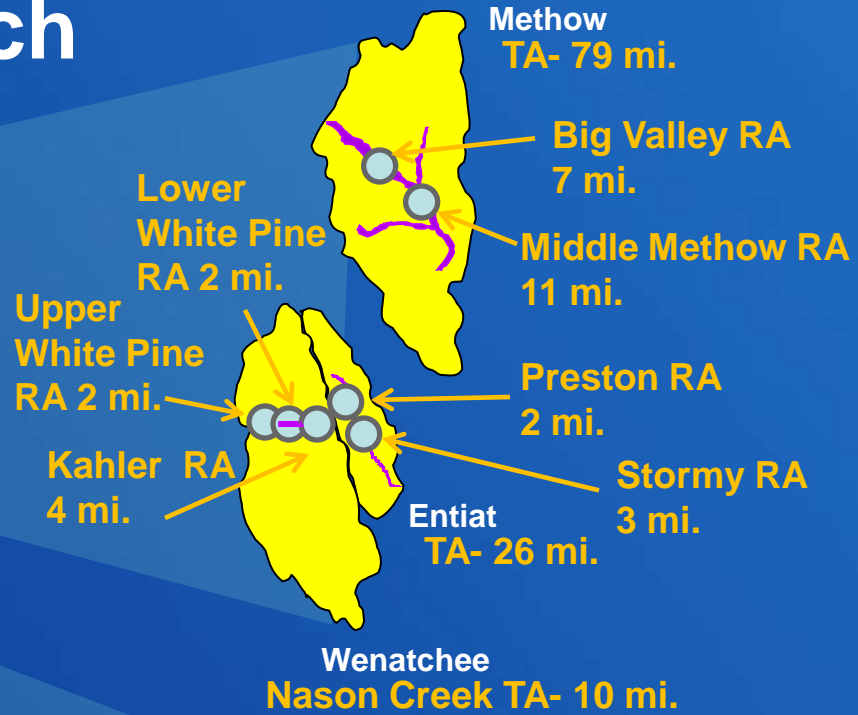
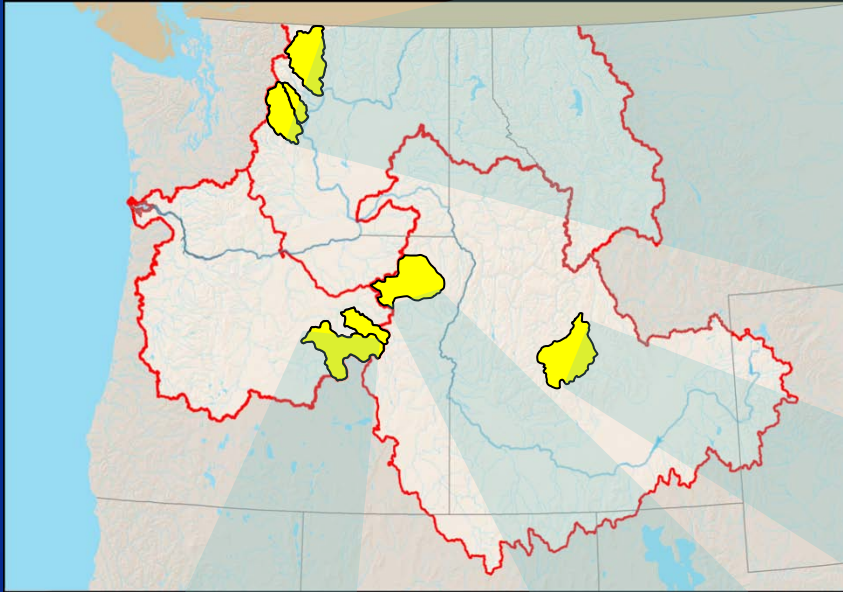
OLD WAY



NEW WAY



USBR Tributary and Reach Assessments, 2012



Grande Ronde



Yankee Fork TA- 18 mi.

What's Next?

- **Workshop pre-mtgs**
 - Transition to Oct 11 NOAA list of Standardized Limiting Factors
 - Pie maps
 - Develop “look back” at completed 2009-2012 and “look forward” to potential 2013-18 project lists
 - Gather monitoring info to support expert panel deliberations
- **Hold Expert Panel workshops (early May)**

Thanks For Your Support !

RECLAMATION