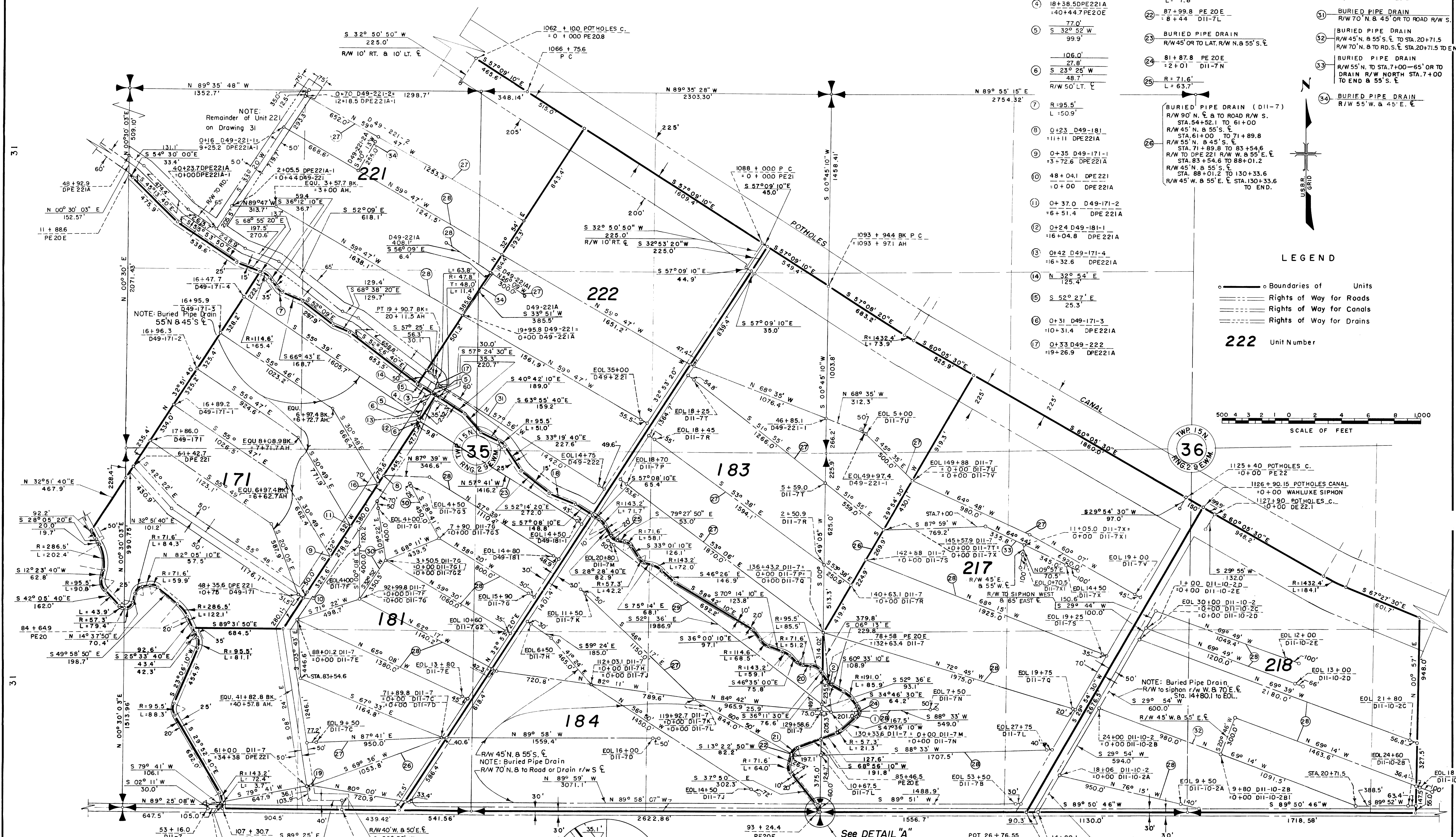


### COLUMBIA BASIN PROJECT - IRRIGATION BLOCK 49 ADAMS COUNTY, WASHINGTON

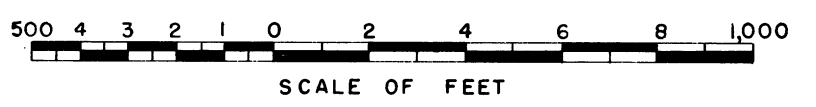


- 1 L=40.3'  
R=57.3'  
L=42.1'
- 2 R=71.6'  
L=30.5'
- 3 S=57°25'E  
109.1'
- 4 18+38.50 PE221A  
+0+44.7 PE20E
- 5 S=32°52'W  
99.9'
- 6 S=32°52'W  
27.8'  
S=23°25'W  
48.7'  
R/W 50' LT. E
- 7 R=95.5'  
L=50.9'
- 8 Q+23 D49-181-1  
+11+11 DPE221A
- 9 O+35 D49-171-1  
+3+72.6 DPE221A
- 10 48+04.1 DPE221  
+0+00 DPE221A
- 11 O+37.0 D49-171-2  
+6+51.4 DPE221A
- 12 O+24 D49-181-1  
+16+04.8 DPE221A
- 13 O+42 D49-171-4  
+16+32.6 DPE221A
- 14 N 32°54'E  
125.4'
- 15 S 52°27'E  
25.3'
- 16 O+31 D49-171-3  
+10+31.4 DPE221A
- 17 O+33 D49-222  
+19+26.9 DPE221A
- 18 S 67°37'E  
220.7'
- 19 61+36.1 D11-7  
+0+00 D11-7B
- 20 S 87°30'20"E  
53.3'
- 21 R=71.6'  
L=61.7'  
L=7.8'
- 22 87+99.8 PE20E  
+8+44 D11-7L
- 23 BURIED PIPE DRAIN  
R/W 45' OR TO LAT. R/W N. & 55' S. E
- 24 81+87.8 PE20E  
+2+01 D11-7N
- 25 R=71.6'  
L=63.7'
- 26 BURIED PIPE DRAIN (D11-7)  
R/W 90' N. E. & TO ROAD R/W S.  
STA. 54+52.1 TO 61+00  
R/W 45' N. & 55' S. E  
STA. 61+00 TO 71+89.8  
R/W 55' N. & 45' S. E  
STA. 71+89.8 TO 83+54.6  
R/W TO DPE 221 R/W N. & 55' E. E  
STA. 83+54.6 TO 88+01.2  
R/W 45' N. & 55' S. E  
STA. 88+01.2 TO 130+33.6  
R/W 45' W. & 55' E. E. STA. 130+33.6  
TO END.
- 27 BURIED PIPE DRAIN  
R/W 55' N. & 45' S. E
- 28 BURIED PIPE DRAIN  
R/W 45' N. & 55' S. E
- 29 BURIED PIPE DRAIN  
R/W 55' OR TO LAT. R/W N.  
& 45' S. E
- 30 BURIED PIPE DRAIN  
R/W 45' W. & 55' E. E
- 31 BURIED PIPE DRAIN  
R/W 70' N. & 45' OR TO ROAD R/W S.
- 32 BURIED PIPE DRAIN  
R/W 45' N. & 55' S. E TO STA. 20+71.5  
R/W 70' N. & 45' OR TO STA. 20+71.5  
TO END
- 33 BURIED PIPE DRAIN  
R/W 55' N. & 45' S. E TO STA. 7+00-55' OR TO  
DRAIN R/W NORTH STA. 7+00  
TO END & 55' S. E
- 34 BURIED PIPE DRAIN  
R/W 55' W. & 45' E. E

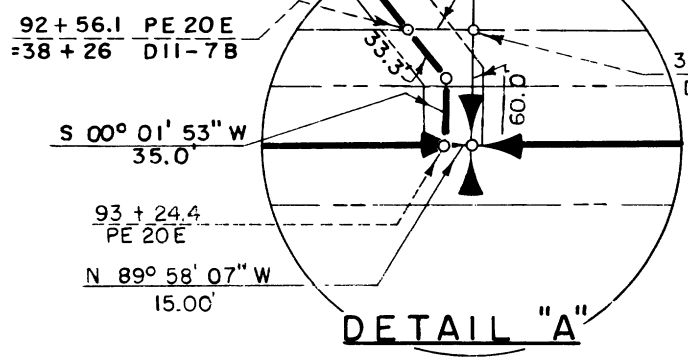
**LEGEND**

- Boundaries of Units
- Rights of Way for Roads
- Rights of Way for Canals
- Rights of Way for Drains

**222** Unit Number



Drawn J.L.R.  
Checked C.L.R. - R.L.J.  
Surveys certified  
*A.N. Davidson*  
Chief, Engr. Div.  
DATE 7-17-61



**THIS SHEET NOT RECORDED**

REV. TO 11-29-82	de	I certify that this is Sheet 5 of 5 Supplemental Sheets of the Ninth Revision of the Final Farm Unit Plat of Irrigation Block 49. <i>M.B. Austin</i> Regional Director (Acting) DATE 8-8-61
REV. TO 12-28-73	de	
REV. TO 7-31-69	C.M.	
REV. TO 12-11-63	ayd	