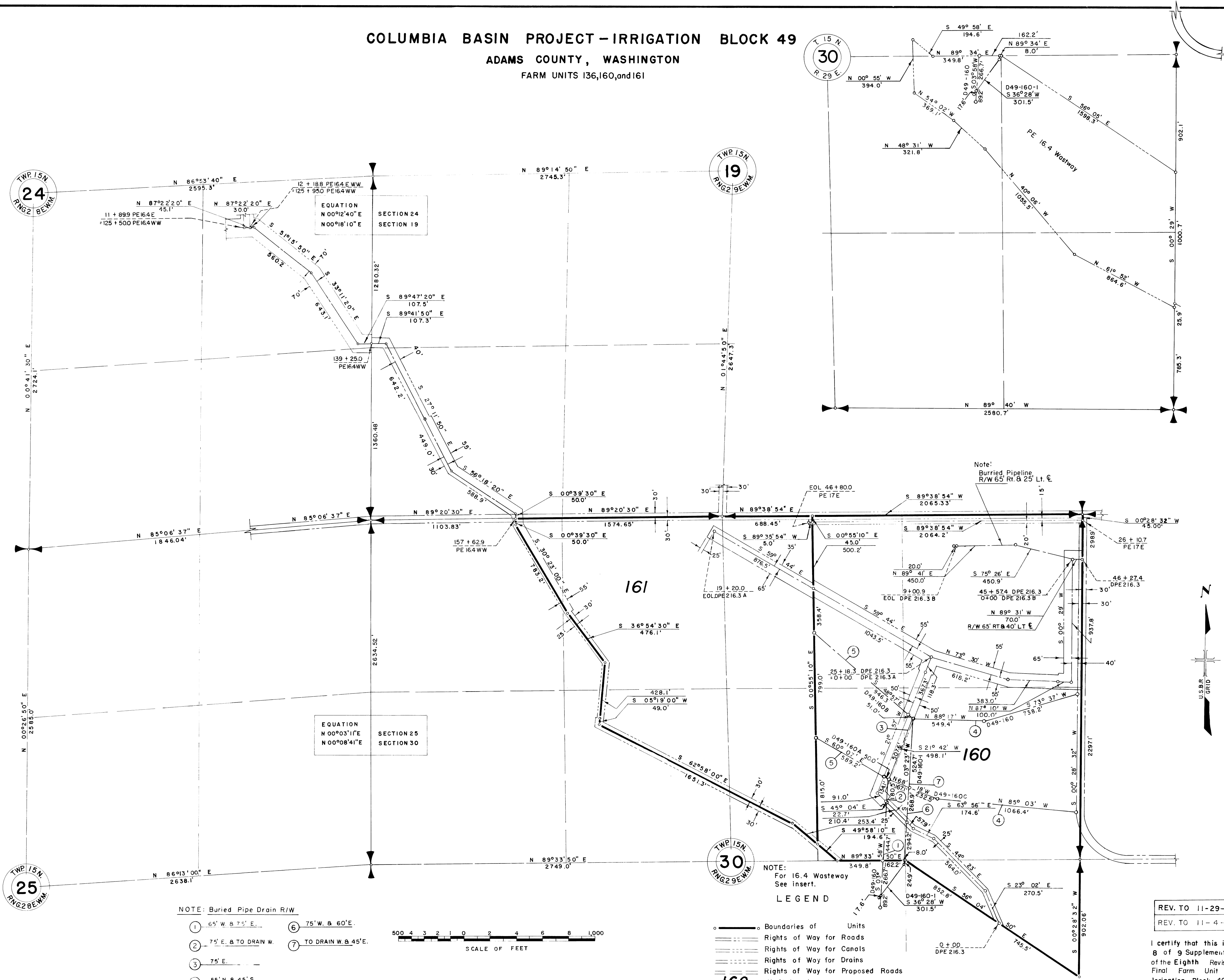


COLUMBIA BASIN PROJECT - IRRIGATION BLOCK 49
ADAMS COUNTY, WASHINGTON
 FARM UNITS 136,160, and 161

24

23

24

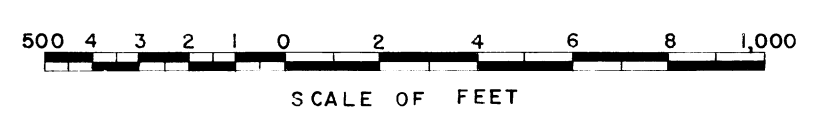


28

Drawn C.J.T.
 Traced C.J.T.
 Checked U.R.O.-C.L.R.-R.L.V.
 Surveys certified
A.V. Davidson
 Chief, Engr. Div.

DATE 6-30-60

- NOTE: Buried Pipe Drain R/W
- | | |
|------------------------|------------------------|
| ① 65' W. & 7.5' E. | ⑥ 75' W. & 60' E. |
| ② 75' E. & TO DRAIN W. | ⑦ TO DRAIN W. & 45' E. |
| ③ 75' E. | |
| ④ 55' N. & 45' S. | |
| ⑤ 45' N. & 55' S. | |



NOTE:
 For 16.4 Washway
 See insert.

- LEGEND**
- Boundaries of Units
 - Rights of Way for Roads
 - Rights of Way for Canals
 - Rights of Way for Drains
 - Rights of Way for Proposed Roads
- 160**
 Unit Number

REV. TO 11-29-82	<i>dc</i>
REV. TO 11-4-76	<i>dc</i>

I certify that this is Sheet
 8 of 9 Supplemental Sheets
 of the Eighth Revision of the
 Final Farm Unit Plat of
 Irrigation Block 49.
M.B. Austin
 Regional Director (Acting)
 DATE 7-27-60