

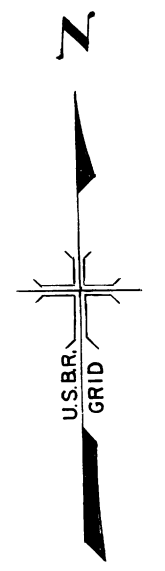
45-43

45-48

Drawn W.W.W.
 Checked J.L.R.
 Surveys certified
A.J. Davidson
 Chief, Engr. Div.

DATE 8-3-62

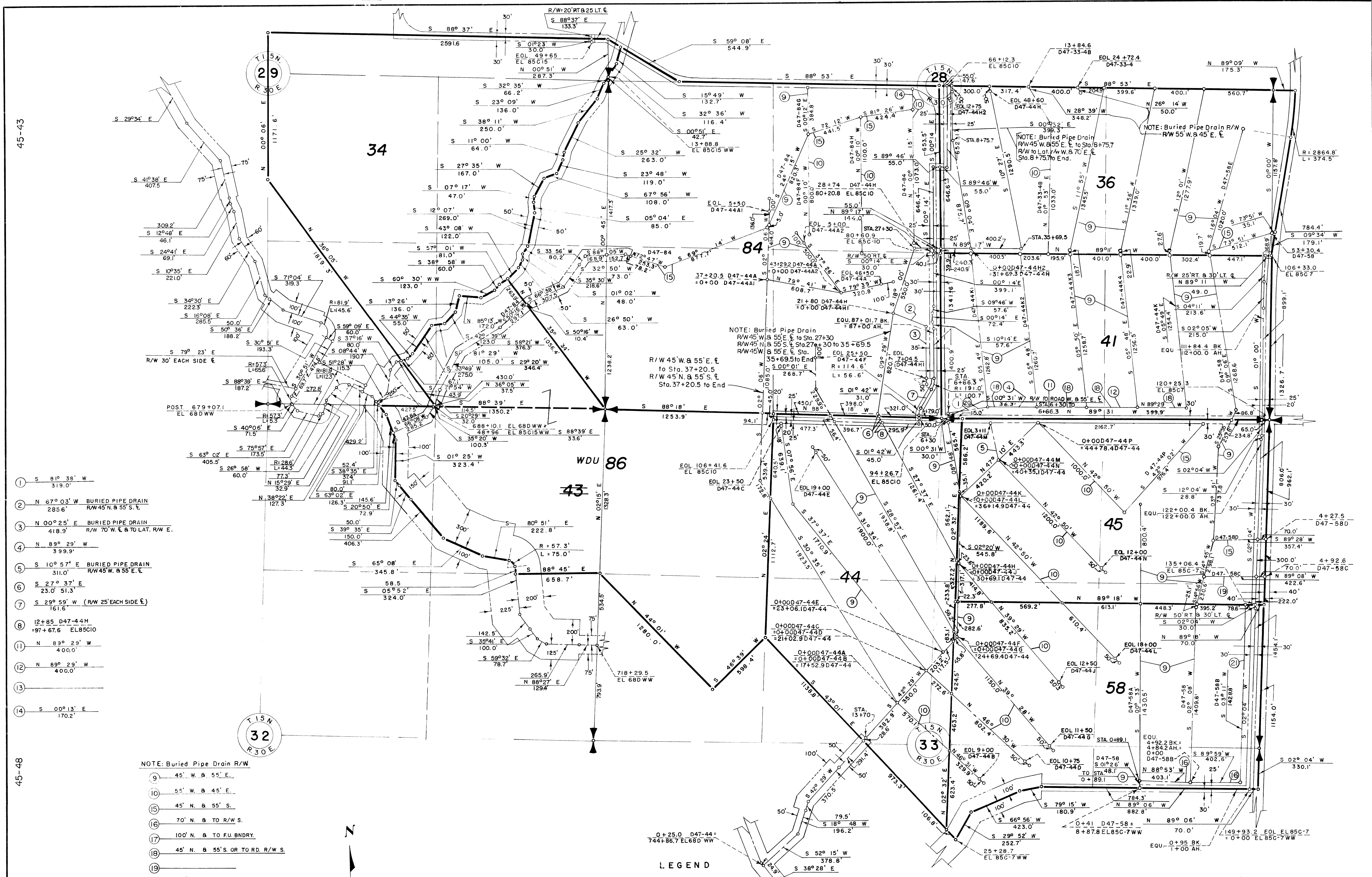
- NOTE: Buried Pipe Drain R/W
- 9 45' W. & 55' E.
 - 10 55' W. & 45' E.
 - 15 45' N. & 55' S.
 - 16 70' N. & TO R/W S.
 - 17 100' N. & TO FU. BNDRY.
 - 18 45' N. & 55' S. OR TO RD. R/W S.
 - 19
 - 20 100' N. & TO RD. S.
 - 21 55' W. & LAT. R/W E.



34 Unit Number

- LEGEND
- Boundaries of Units
 - — — Rights of Way for Roads
 - · · · Rights of Way for Canals
 - · · · Rights of Way for Drains

- 1 S 81° 38' W 319.0'
- 2 N 67° 03' W BURIED PIPE DRAIN R/W 45' N. & 55' S. E. 285.6'
- 3 N 00° 25' E BURIED PIPE DRAIN R/W 70' W. E. & TO LAT. R/W E. 418.9'
- 4 N 89° 29' W 399.9'
- 5 S 10° 57' E BURIED PIPE DRAIN R/W 45' W. & 55' E. E. 311.0'
- 6 S 27° 37' E 23.0' 51.3'
- 7 S 29° 59' W (R/W 25' EACH SIDE E.) 161.6'
- 8 12+85 D47-44H +97+67.6 EL 85C10
- 11 N 89° 29' W 400.0'
- 12 N 89° 29' W 400.0'
- 13
- 14 S 00° 13' E 170.2'



REV. TO 12-28-73	<i>dt</i>
REV. TO 7-31-69	<i>CTM</i>
REV. TO 9-1-64	<i>B.L.M.</i>

I certify that this is Sheet 2 of 2 Supplemental Revisions of the Seventh Revision of the Final Farm Unit Plat of Irrigation Block 47.

M.B. Austin
 Regional Director (Act.)
 DATE 8-14-62