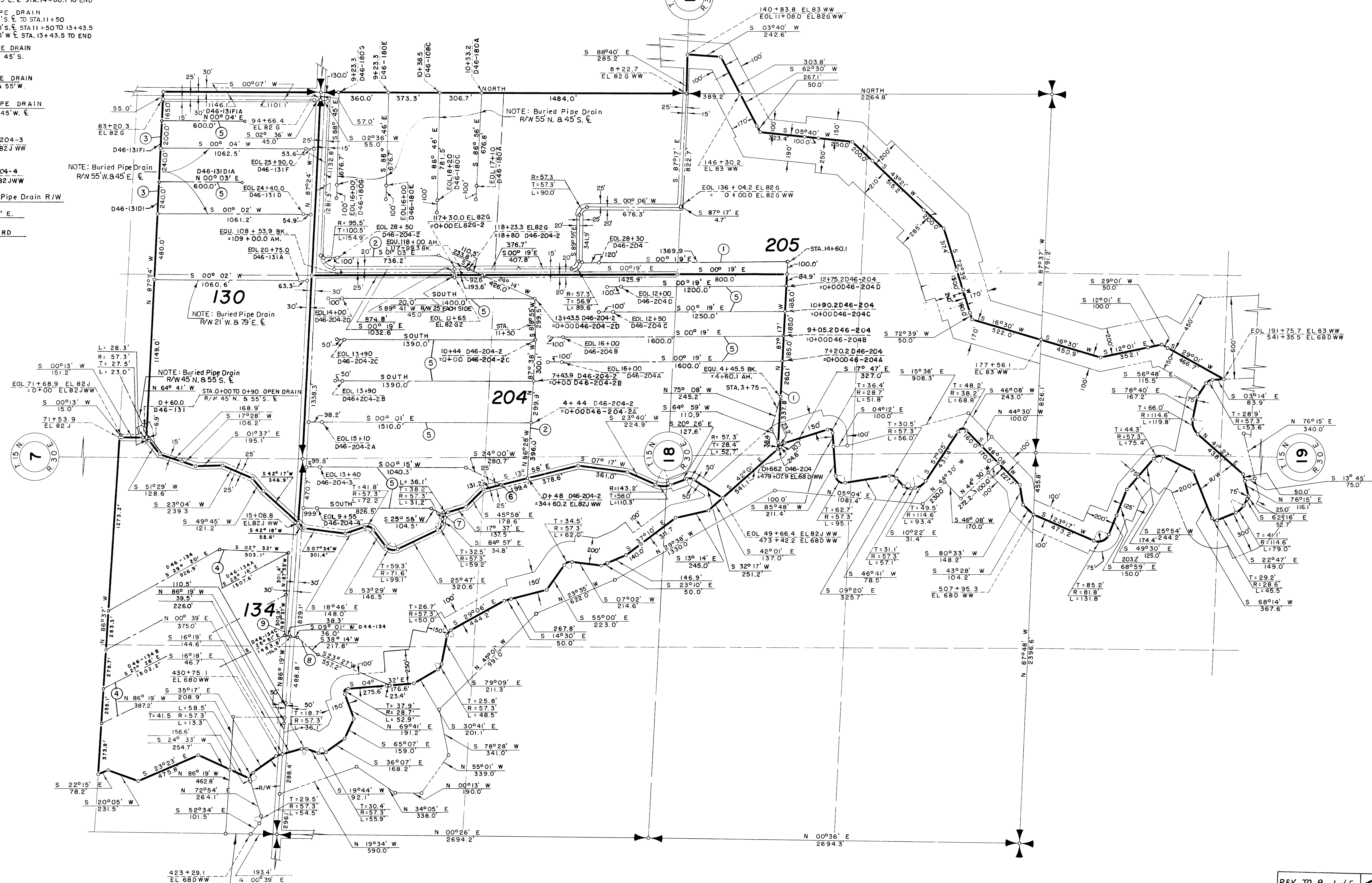
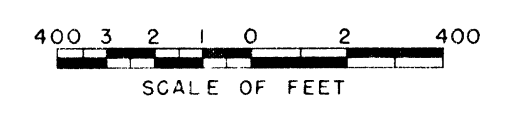


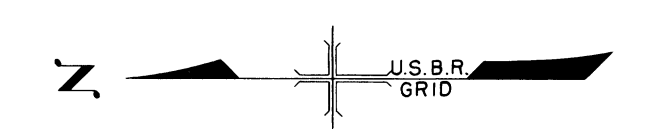
- 1 BURIED PIPE DRAIN  
R/W 45' N. & 55' S. E. TO STA. 3+75  
R/W 70' N. & 30' S. E. STA. 3+75 TO 14+60.1  
R/W 45' W. & 55' E. E. STA. 14+60.1 TO END
  - 2 BURIED PIPE DRAIN  
R/W 45' N. & 55' S. E. TO STA. 11+50  
R/W 70' N. & 30' S. E. STA. 11+50 TO 13+43.5  
R/W 55' E. & 45' W. E. STA. 13+43.5 TO END
  - 3 BURIED PIPE DRAIN  
R/W 55' N. & 45' S.
  - 4 BURIED PIPE DRAIN  
R/W 45' E. & 55' W.
  - 5 BURIED PIPE DRAIN  
R/W 55' E. & 45' W. E.
  - 6 O+19 D46-204-3  
+32+60.8 EL 82J WW
  - 7 O+24 D46-204-4  
+27+77.4 EL 82J WW
- NOTE: Buried Pipe Drain R/W
- 8 25' W. & 25' E.
  - 9 75' N. & TO RD.
  - 10



Drawn H.M.R.  
 Checked J.L.R.  
 Surveys certified  
A.J. Davidson  
 Chief, Engr. Div.  
 DATE 7-8-60



- LEGEND
- Boundaries of Units
  - Rights of Way for Roads
  - Rights of Way for Canals
  - Rights of Way for Drains



134 Unit Number

REV. TO 9-1-65 *[Signature]*

REV. TO 9-24-92	<i>dy</i>
REV. TO 12-31-84	<i>dc</i>
REV. TO 7-31-70	<i>C.Mc</i>

I certify that this is Sheet  
 5 of 5 Supplemental Sheets  
 of the Fourth Revision  
 of the Final Farm Unit Plat  
 of Irrigation Block 46.  
M.B. Austin  
 Regional Director (Act.)  
 DATE 7-26-60