

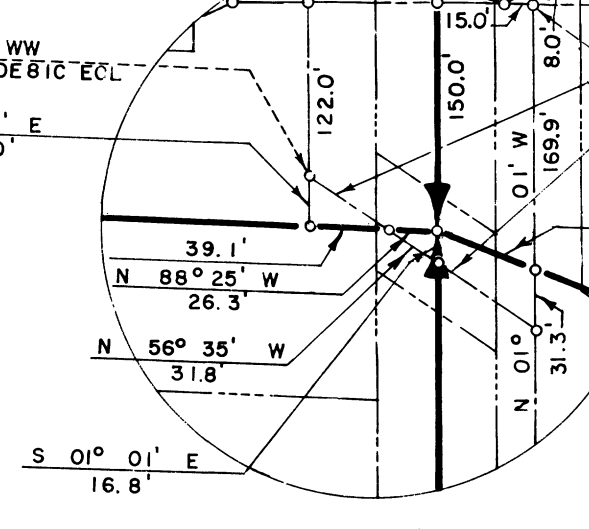
Drawn O.K.O.-P.J.S.
 Checked J.L.R.-E.S.M.
 Surveys certified
 Chief, Eng. Div. D & C. Div.
 DATE 6-29-59

- 1) R/W 25' LT. 25' RT. E
N 89° 45' E
65.0'
- 2) N 00° 15' W
362.1'
- 3) 132+00.0 EL 81
to 0+00.0 EL 81E
- 4) 135+61.8 EL 81
to 0+00.0 EL 81F
- 5) BURIED PIPE DRAIN
R/W 45' N. & 55' S. E.
- 6) BURIED PIPE DRAIN
R/W 55' W. E. & TO LAT. R/W E.
- 7) BURIED PIPE DRAIN
R/W 55' N. E. & TO LAT. R/W S.
- 8) BURIED PIPE DRAIN
R/W 45' N. & 55' S. E.
- 9) BURIED PIPE DRAIN
R/W 55' W. & 45' E. E.
- 10) BURIED PIPE DRAIN
R/W 55' N. & 45' S. E.
- 11) BURIED PIPE DRAIN
R/W TO RD. W. & 85' E.

LEGEND

- Boundaries of Units
- Rights of Way for Roads
- Rights of Way for Canals
- Rights of Way for Drains
- Former Unit Number

103 Unit Number



REV. TO 12-18-68	C.M.C.	Certify that this is Sheet 4 of 9 Supplemental Sheets of the Final Form Unit Plat of Irrigation Block 46. <u>W. G. Draper</u> Regional Director (Acting) DATE <u>7-29-59</u>
REV. TO 10-1-63	A.P.D.	
REV. TO 9-1-64	B.I.M.	
REV. TO 9-1-65	B.I.M.	
REV. TO 7-29-66	C.M.C.	