

- 1 Buried Pipe Drain
R/W 45' W. & 55' E. to Sta. 10+00
R/W 45' N. & 55' S. to End.
- 2 Buried Pipe Drain
R/W 30' N. & 60' S. to Sta. 3+61.4
R/W 45' N. & 55' S. to Sta. 3+61.4 to End.
- 3 N 82° 33' W
100.0
- 4 O+00 D46-36A4
+14+38.6 D46-36A
+0+00 D46-36A5
- 5 O+00 D46-36A6
+17+63.6 D46-36A
+0+00 D46-36A7
- 6 EOL 8+50
D46-36A5
- 7 EOL 8+10
D46-36A7

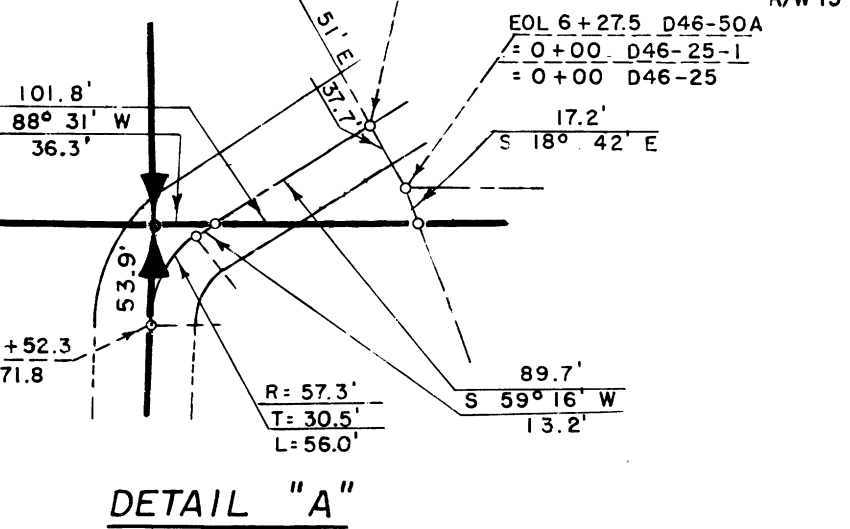
- 8 BURIED PIPE DRAIN
S 85° 38' E. R/W 65' S. E.
1029.8
- 9 L=46.4'
R=127.4'
T=53.6'
L=55.0'
- 10 BURIED PIPE DRAIN
R/W 65' E. & TO DE 71 R/W W.
Sta. 32+49 TO 51+73.4
- 11 BURIED PIPE DRAIN
R/W 55' N. & 45' S. E.
- 12 EOL 12+00
D46-37B
- 13 R=57.3'
T=60.4'
L=93.0'
- 14 EOL 2+50
D46-37A1
- 15 N 88° 18' W BURIED PIPE DRAIN
R/W 65' S. E. & TO
LAT. R/W N. N. 180.4'

- 16 EOL 2+50
D46-36A8
- 17 20+63.6 D46-36A
+0+00 D46-36A8
- 18 EOL 37+20
D46-36A
- 19 BURIED PIPE DRAIN
R/W 45' N. & 55' S. E.
- 20 S 40° 57' W
347.5'
- 21 BURIED PIPE DRAIN
55' W. & 45' OR TO
DRAIN E. E.
- 22 9+37.1 D46-24
+0+00 D46-24A
- 23 97.1'
S 88° 44' E
200.4'
- 24 S 69° 16' W
273.8'
- 25 S 59° 16' W
220.6'
- 26 O+54 D46-24+
93+05.3 DE 71.8
- 27 BURIED PIPE DRAIN
R/W 45' W. & 55' E. E.
- 28 EQU 2+23.4 BK. + 2+68.9 AH.
D46-25-1 (REV)
+0+00 D46-25-1A
+0+00 D46-25-1B
- 29 BURIED PIPE DRAIN
N 00° 38' W
R/W 65' E. & TO LAT. R/W W.
- 30 BURIED PIPE DRAIN
R/W 55' OR TO DRAIN
W. & 45' E. E.
- 31 S+00 D46-25-1B
+0+00 D46-25-1B1
- 32 10+00
D46-25-1B
- 33 32+03.9 D46-25-1
+31+50 D46-25-1 EXT.
- 34 N 75° 56' E
67.9'
- 35 EQU 18+90.0 BK.
+18+86.9 AH.
+0+00 D46-36A
- 36 BURIED PIPE DRAIN
R/W 65' E. & TO W. W.
R/W WEST.
- 37 BURIED PIPE DRAIN
R/W 55' W. & 45' E. E.
- 38 1322.2'
S 48° 32' W BURIED PIPE DRAIN
R/W 65' E. & TO ROAD
R/W WEST
- 39 118.4'
S 52° 58' W
508.7'
- 40 BURIED PIPE DRAIN
R/W 65' W. & 55' E. E.
- 40 BURIED PIPE DRAIN
R/W 55' N. & 75' S. E.

LEGEND

- Boundaries of Units
- — — Rights of Way for Roads
- — — Rights of Way for Canals
- — — Rights of Way for Drains

24 Unit Number



REV. TO 12-18-68	CM
REV. TO 7-31-67	CM
REV. TO 7-29-66	CM
REV. TO 9-1-64	SM

I certify that this is Sheet 4 of 23 Supplemental Sheets of the Revision of the Final Farm Unit Plat of Irrigation Block 46.

Wm. H. Tuller
Regional Director (Acting)

DATE 2-2-56

REV. TO 9-24-92	dc
REV. TO 12-20-83	dc

Drawn C.F.D.-G.R.R.
Checked E.S.M.
Surveys certified
J.D. Humes
Chief of D&C Div.
DATE 1-20-56