

Note: Buried Pipe Drain
R/W 45' E. & 55' W of C.

Note: Buried Pipe Drain
R/W 45' N. & 55' S of C.

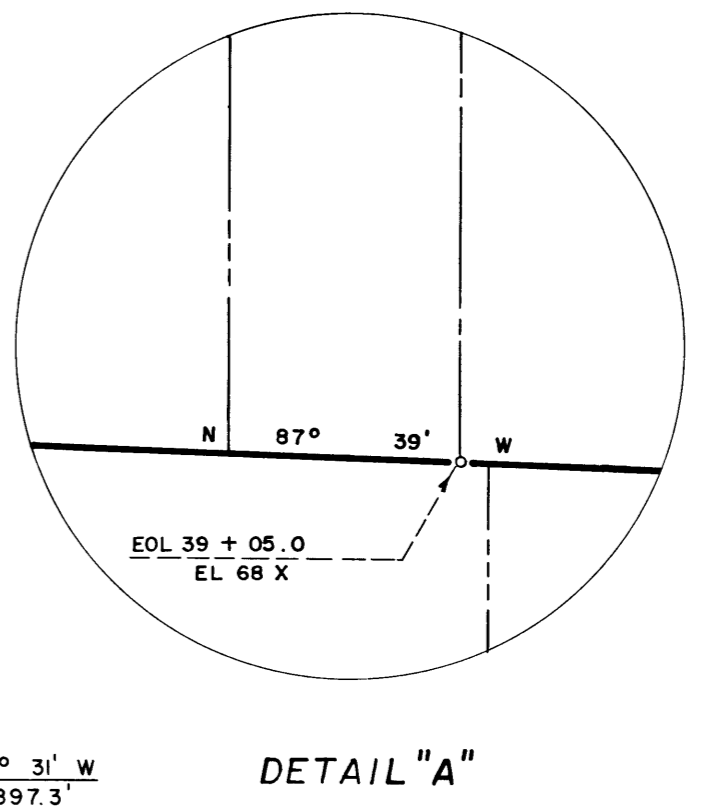
Note: Buried Pipe Drain
R/W 45' E. & 55' W of C.

- NOTE: Buried Pipe Drain R/W
- ① 55' W. & 45' E.
 - ② 55' N. & 45' S.
 - ③ 45' W. & 55' E.

NOTE: New Buried 15" Buried PVC Pipe From EL68E TO EL68E BY E.C.B.I.D.

NOTE: NEW 18" Buried PVC Pipe From EL68E TO 99+53.4 EL68 BY E.C.B.I.D.

- LEGEND
- Boundaries of Units
 - ▬ Rights of Way for Roads
 - ▬ Rights of Way for Canals
 - ▬ Rights of Way for Drains
 - ▬ Rights of Way for Proposed Roads
- 234 Unit Number
- Former Boundary



REV. TO 7-17-98	LB
REV. TO 12-29-89	de
REV. TO 7-29-66	CM
REV. TO 9-1-64	BM

I certify that this is Sheet 19 of 19 Supplemental Sheets of the Fifth Revision of the Final Farm Unit Plat of Irrigation Block 45.

G.C. Stamm
Regional Director (Act.)
DATE 8-4-59

Drawn P.J.S.
Checked E.R.P.
Surveys certified
A.J. Davidson
Chief, of D&C Div. (Act.)
DATE 7-24-59

THIS SHEET NOT RECORDED