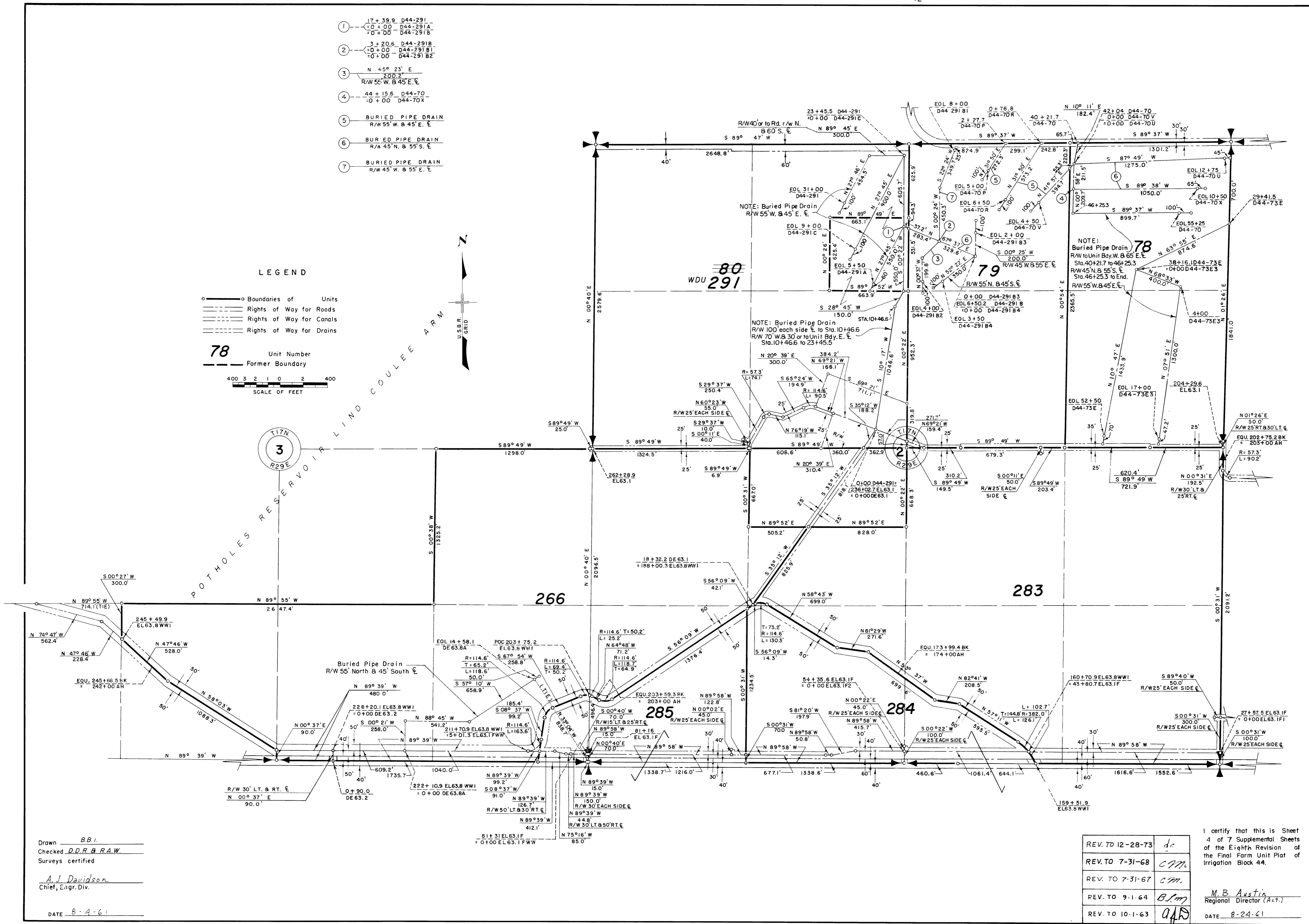
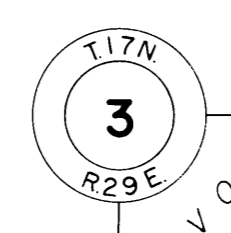
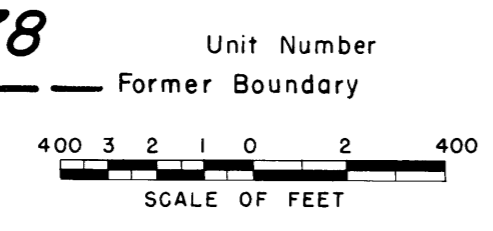


- ① 17+39.9 D44-291
+0+00 D44-291A
+0+00 D44-291B
- ② 3+20.6 D44-291B
+0+00 D44-291B1
+0+00 D44-291B2
- ③ N 45° 23' E
200.2'
R/W 55' W. & 45' E. ☐
- ④ 44+15.6 D44-70
+0+00 D44-70X
- ⑤ BURIED PIPE DRAIN
R/W 55' W. & 45' E. ☐
- ⑥ BURIED PIPE DRAIN
R/W 45' N. & 55' S. ☐
- ⑦ BURIED PIPE DRAIN
R/W 45' W. & 55' E. ☐

LEGEND

- Boundaries of Units
- Rights of Way for Roads
- Rights of Way for Canals
- Rights of Way for Drains
- 78 Unit Number
- Former Boundary



Drawn BB1
 Checked DDR & RAW
 Surveys certified
A.J. Davidson
 Chief, Engr. Div.
 DATE 8-4-61

REV. TO 12-28-73	<u>dc</u>
REV. TO 7-31-68	<u>cm</u>
REV. TO 7-31-67	<u>cm</u>
REV. TO 9-1-64	<u>Blm</u>
REV. TO 10-1-63	<u>afp</u>

I certify that this is Sheet
 4 of 7 Supplemental Sheets
 of the Eighth Revision of
 the Final Farm Unit Plat of
 Irrigation Block 44.
M.B. Austin
 Regional Director (Act.)
 DATE 8-24-61