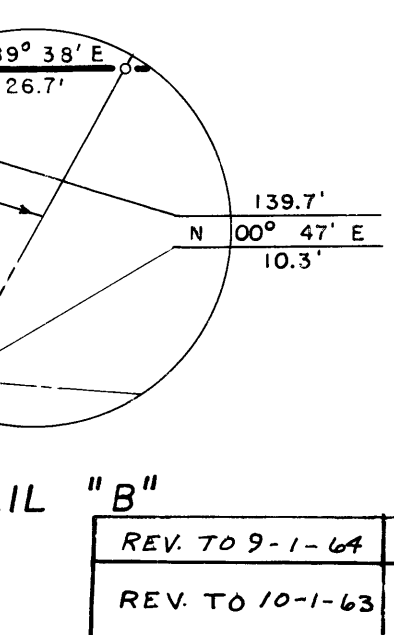
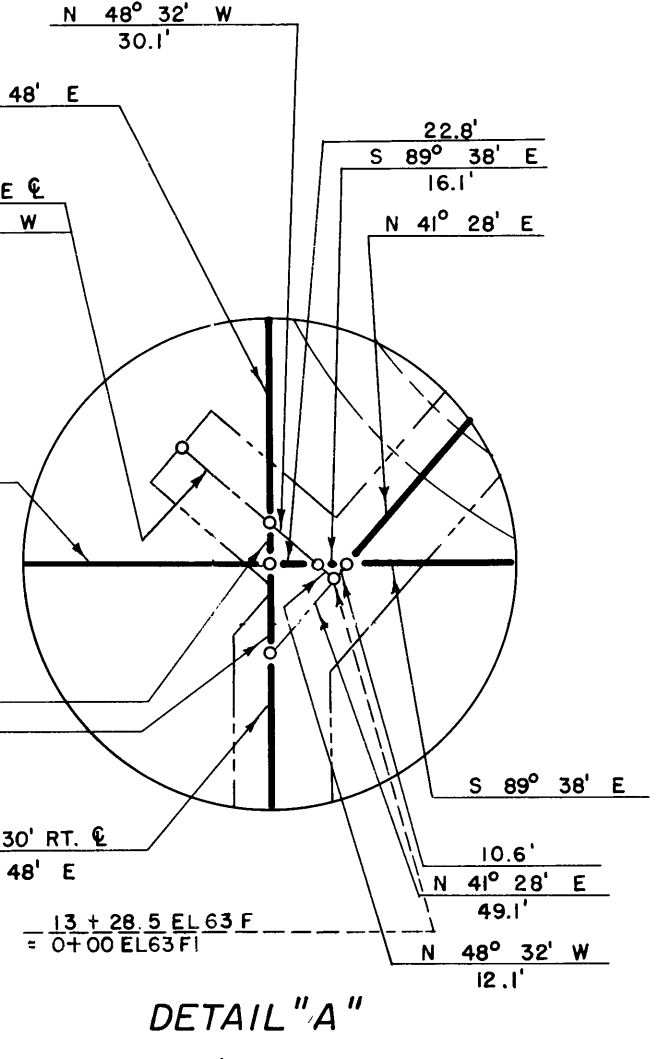


- NOTE: Buried Pipe Drain R/W
- ⑦ 45° N. & 55° S.
  - ⑧ 55° N. & 45° S.
  - ⑨ TO LAT. W. & 80° E.
  - ⑩ 45° S. & TO DRAIN N.
  - ⑪ 45° W. & 55° OR TO DRAIN E.
  - ⑫ 45° W. & TO LAT. E.
  - ⑬ 55° W. & 45° E.



Drawn H.E.M.  
 Checked D.D.R. & R.A.W.  
 Surveys certified  
 Chief, Engr. Div.  
 DATE \_\_\_\_\_

**LEGEND**

- Boundaries of Units
- Rights of Way for Roads
- Rights of Way for Canals
- Rights of Way for Drains
- Rights of Way for Proposed Roads

**55** Unit Number

400 3 2 1 0 2 400  
 SCALE OF FEET

REV. TO 10-6-80 *de*  
 REV. TO 7-31-67 *C.M.*

I certify that this is Sheet 3 of 7 Supplemental Sheets of the 57468 Revision of the Final Farm Unit Plat of Irrigation Block 44.

*M.B. Austin*  
 Regional Director (Act.)  
 DATE 8-24-61