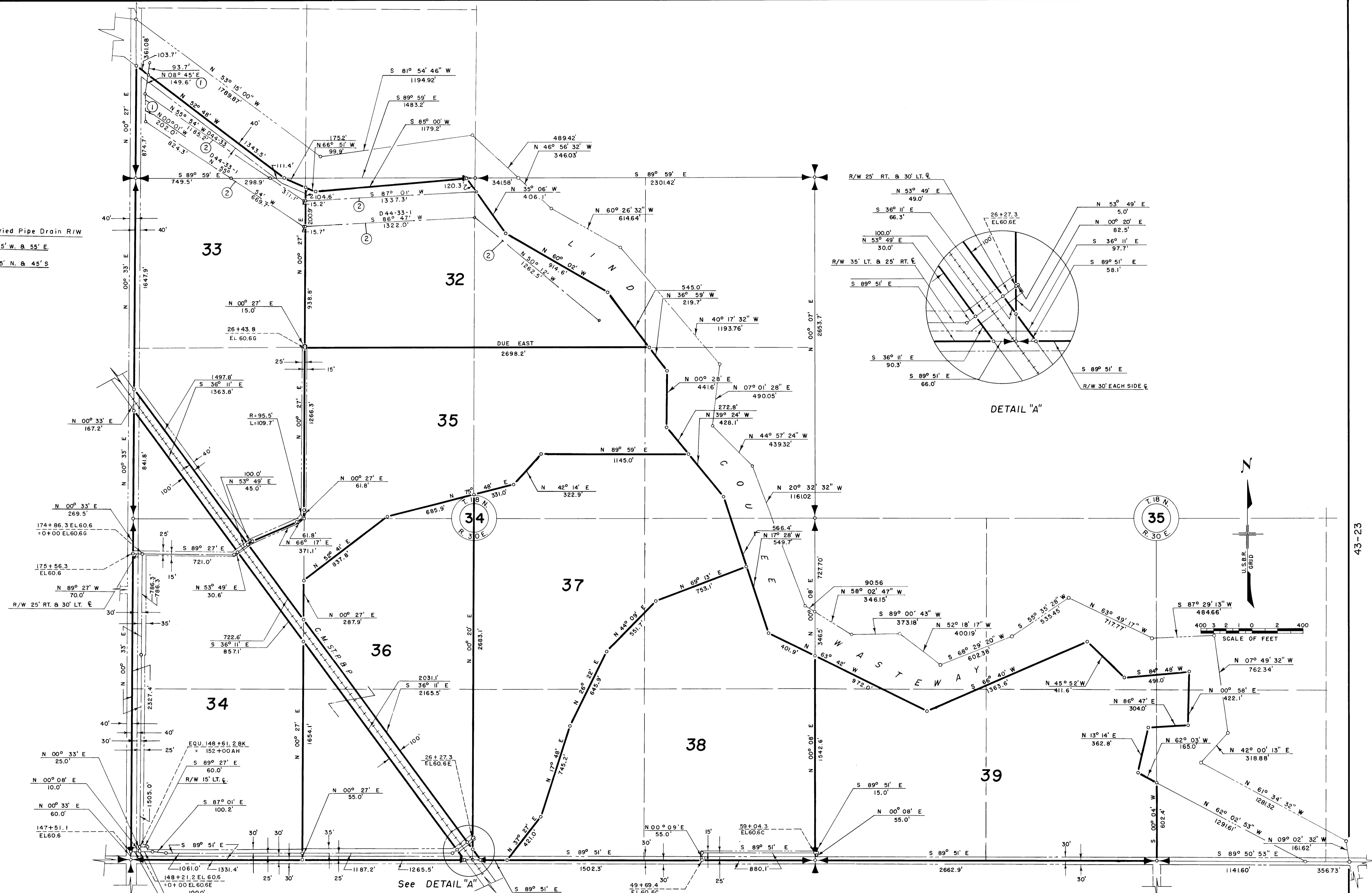


NOTE: Buried Pipe Drain R/W

- ① 45' W. & 55' E.
- ② 55' N. & 45' S.
- ③



Drawn H.E.M.  
 Checked DDR & RAW.  
 Surveys certified  
A.J. Davidson  
 Chief, Engr. Div.

DATE 8-4-61

- LEGEND
- — ○ Boundaries of Farm Units
  - ==== Rights of Way for Roads
  - ==== Rights of Way for Canals
  - ==== Rights of Way for Drains
  - ==== Rights of Way for Proposed Road

**33** Farm Unit Number

I certify that this is Sheet  
 of Supplemental Sheets  
 of the Revision of  
 the Final Farm Unit Plat  
 of Irrigation Block 44.  
M.B. Austin  
 Regional Director

REV. TO 12-30-94 dc DATE 8-24-61