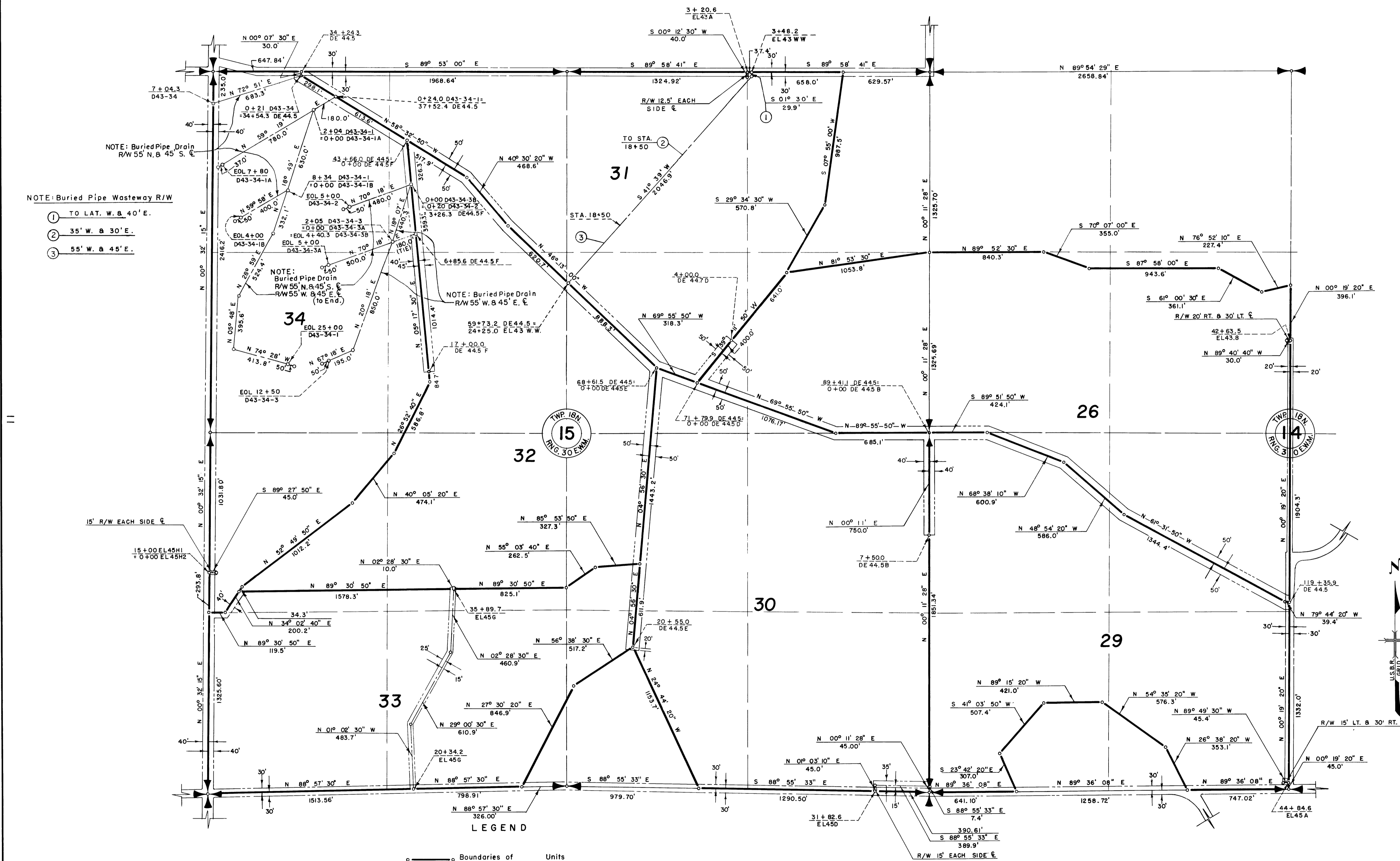


COLUMBIA BASIN PROJECT - IRRIGATION BLOCK 43
GRANT COUNTY, WASHINGTON

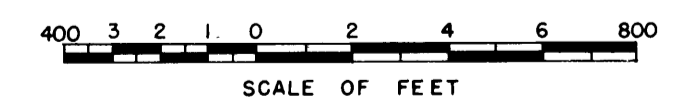


- NOTE: Buried Pipe Wasteway R/W
- ① TO LAT. W. B. 40' E.
 - ② 35' W. B. 30' E.
 - ③ 55' W. B. 45' E.

Drawn H.E.M.
Checked J.L.W.
Surveys certified
J. D. Humes
Chief, D & C. Div.
DATE 9-10-59

- LEGEND**
- ———○ Boundaries of Units
 - Rights of Way for Roads
 - Rights of Way for Canals
 - Rights of Way for Drains

26 Unit Number



REV. TO 11-5-81	de.
REV. TO 7-31-68	cmc

I certify that this is Sheet 5 of 17 Supplemental Sheets of the Seventh Revision of the Final Farm Unit Plat of Irrigation Block 43.
Merrill U. Martz
Regional Director (Act.)
DATE 9-18-59