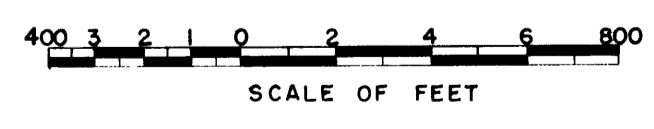


COLUMBIA BASIN PROJECT - IRRIGATION BLOCK 43 GRANT COUNTY, WASHINGTON

42-12

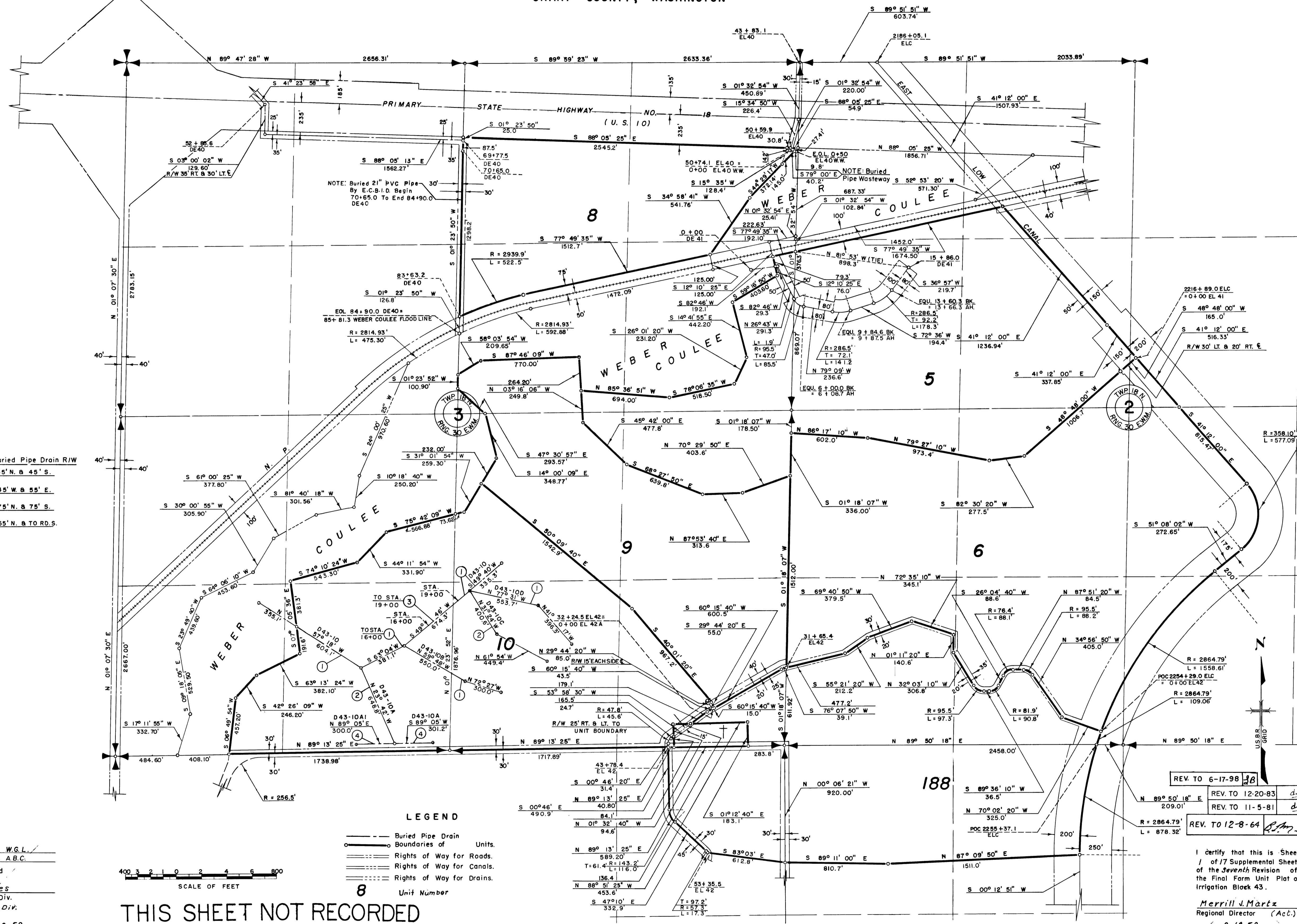
- NOTE: Buried Pipe Drain R/W
- ① 55' N. & 45' S.
 - ② 45' W. & 55' E.
 - ③ 75' N. & 75' S.
 - ④ 55' N. & TO RD. S.

Drawn A.C.R. W.G.L.
 Checked A.R.S. A.B.C.
 Surveys certified
J.D. Humes
 Chief, Engr. Div.
 D.F.C. Div.
 DATE 9-10-59



THIS SHEET NOT RECORDED

- LEGEND**
- Buried Pipe Drain
 - Boundaries of Units
 - Rights of Way for Roads
 - Rights of Way for Canals
 - Rights of Way for Drains



REV. TO 6-17-98	JB
REV. TO 12-20-83	dc
REV. TO 11-5-81	dc
REV. TO 12-8-64	BJM

I certify that this is Sheet 1 of 17 Supplemental Sheets of the Seventh Revision of the Final Farm Unit Plat of Irrigation Block 43.
Merrill J. Martz
 Regional Director (Act.)
 DATE 9-18-59