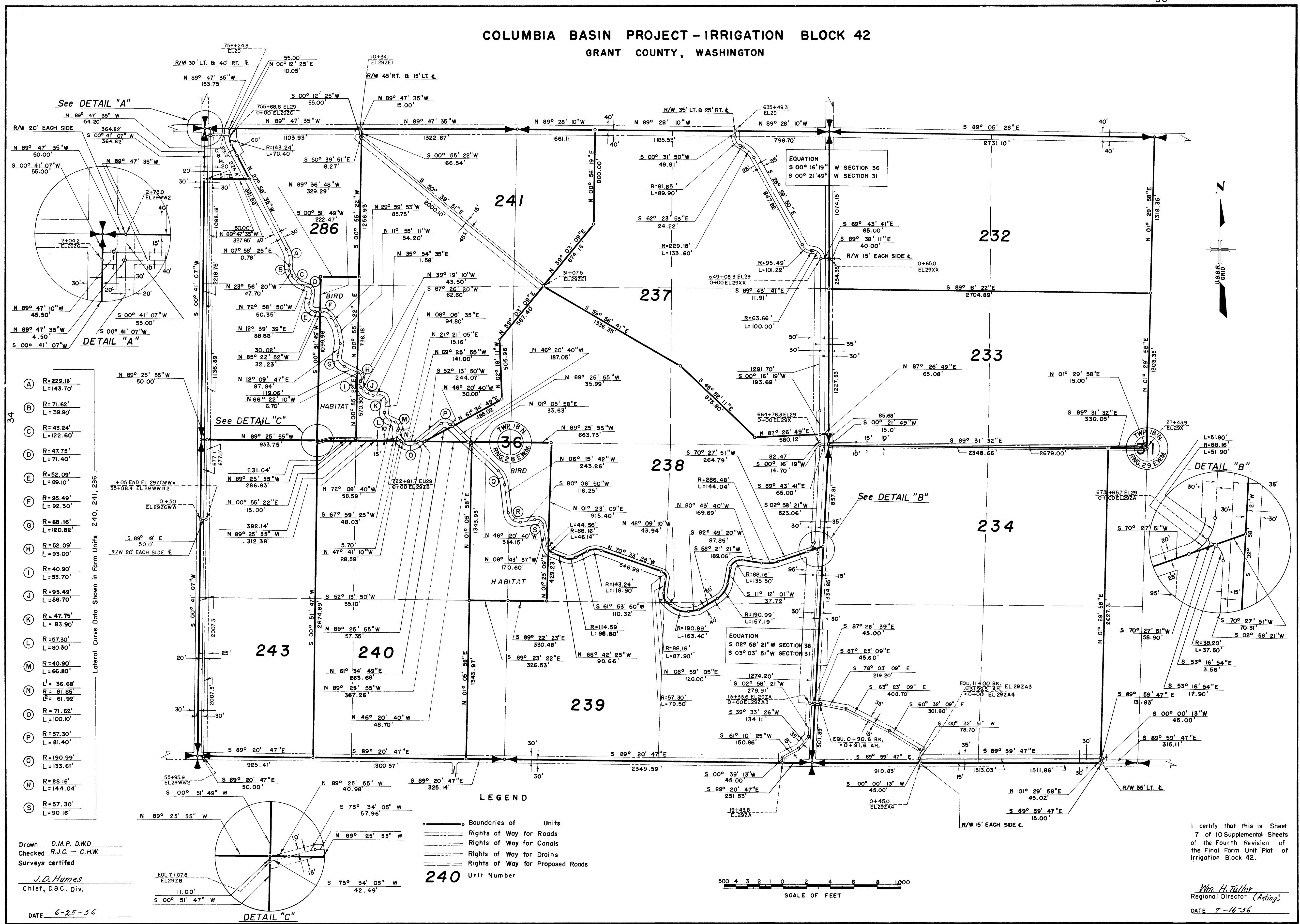


COLUMBIA BASIN PROJECT - IRRIGATION BLOCK 42 GRANT COUNTY, WASHINGTON



See DETAIL "A"

See DETAIL "C"

See DETAIL "B"

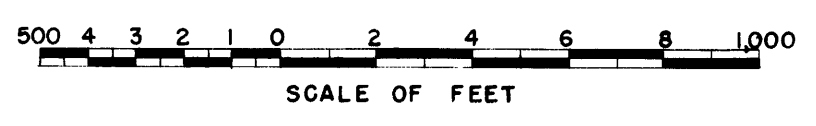
(A)	R=229.18'	L=143.70'	
(B)	R=71.62'	L=39.90'	
(C)	R=143.24'	L=122.60'	
(D)	R=47.75'	L=71.40'	
(E)	R=52.09'	L=89.10'	
(F)	R=95.49'	L=92.30'	
(G)	R=88.16'	L=120.82'	
(H)	R=52.09'	L=93.00'	
(I)	R=40.90'	L=53.70'	
(J)	R=95.49'	L=88.70'	
(K)	R=47.75'	L=83.90'	
(L)	R=57.30'	L=80.30'	
(M)	R=40.90'	L=66.80'	
(N)	L=36.68'	R=81.85'	B=61.92'
(O)	R=71.62'	L=100.10'	
(P)	R=57.30'	L=81.40'	
(Q)	R=190.99'	L=133.61'	
(R)	R=88.16'	L=144.04'	
(S)	R=57.30'	L=90.16'	

Lateral Curve Data Shown in Form Units 240, 241, 286

LEGEND

- Boundaries of Units
- +— Rights of Way for Roads
- +— Rights of Way for Canals
- +— Rights of Way for Drains
- +— Rights of Way for Proposed Roads

240 Unit Number



Drawn D.M.P. D.W.D.
 Checked R.J.C. - C.H.W.
 Surveys certified
J.D. Humes
 Chief, D.B.C. Div.
 DATE 6-25-56

I certify that this is Sheet
 7 of 10 Supplemental Sheets
 of the Fourth Revision of
 the Final Farm Unit Plat of
 Irrigation Block 42.
Wm. H. Tuller
 Regional Director (Acting)
 DATE 7-16-56