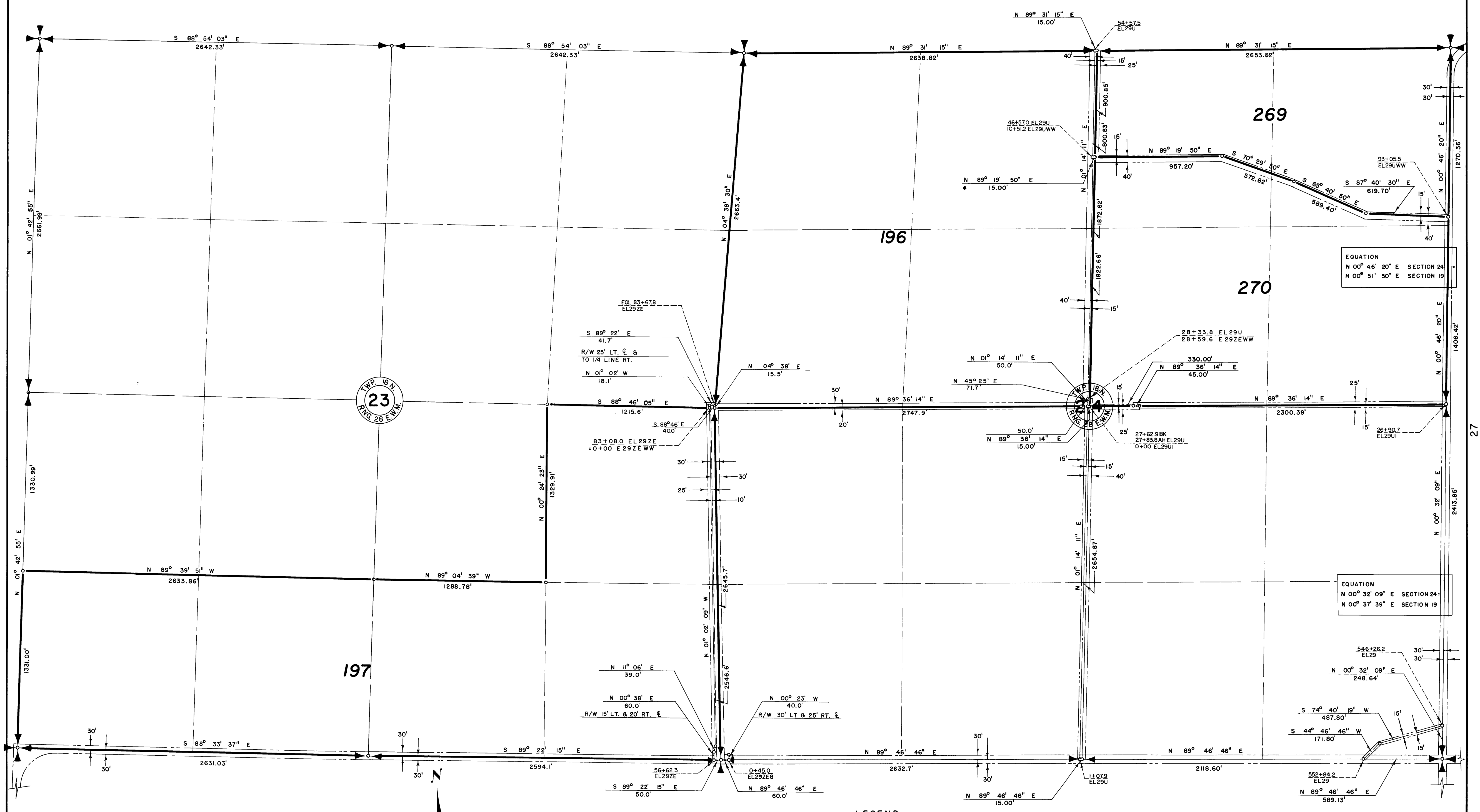


### COLUMBIA BASIN PROJECT - IRRIGATION BLOCK 42 GRANT COUNTY, WASHINGTON



EQUATION  
 N 00° 46' 20" E SECTION 24  
 N 00° 51' 50" E SECTION 18

EQUATION  
 N 00° 32' 09" E SECTION 24  
 N 00° 37' 39" E SECTION 19

- LEGEND**
- Boundaries of Units
  - ==== Rights of Way for Roads
  - ==== Rights of Way for Canals
  - ==== Rights of Way for Drains
  - ==== Rights of Way for Proposed Roads
- 196 Unit Number

Drawn D.M.P. H.E.M.  
 Checked R.W. - D.R.  
 Surveys certified  
J.D. Humes  
 Chief, D.C. Div.  
 DATE 8-24-59

I certify that this is Sheet  
 18 of 27 Supplemental Sheets  
 of the Seventh Revision of  
 the Final Farm Unit Plat of  
 Irrigation Block 42.  
W.G. Draper  
 Regional Director (Act.)  
 DATE 8-26-59

REV. TO 9-1-65 Blm