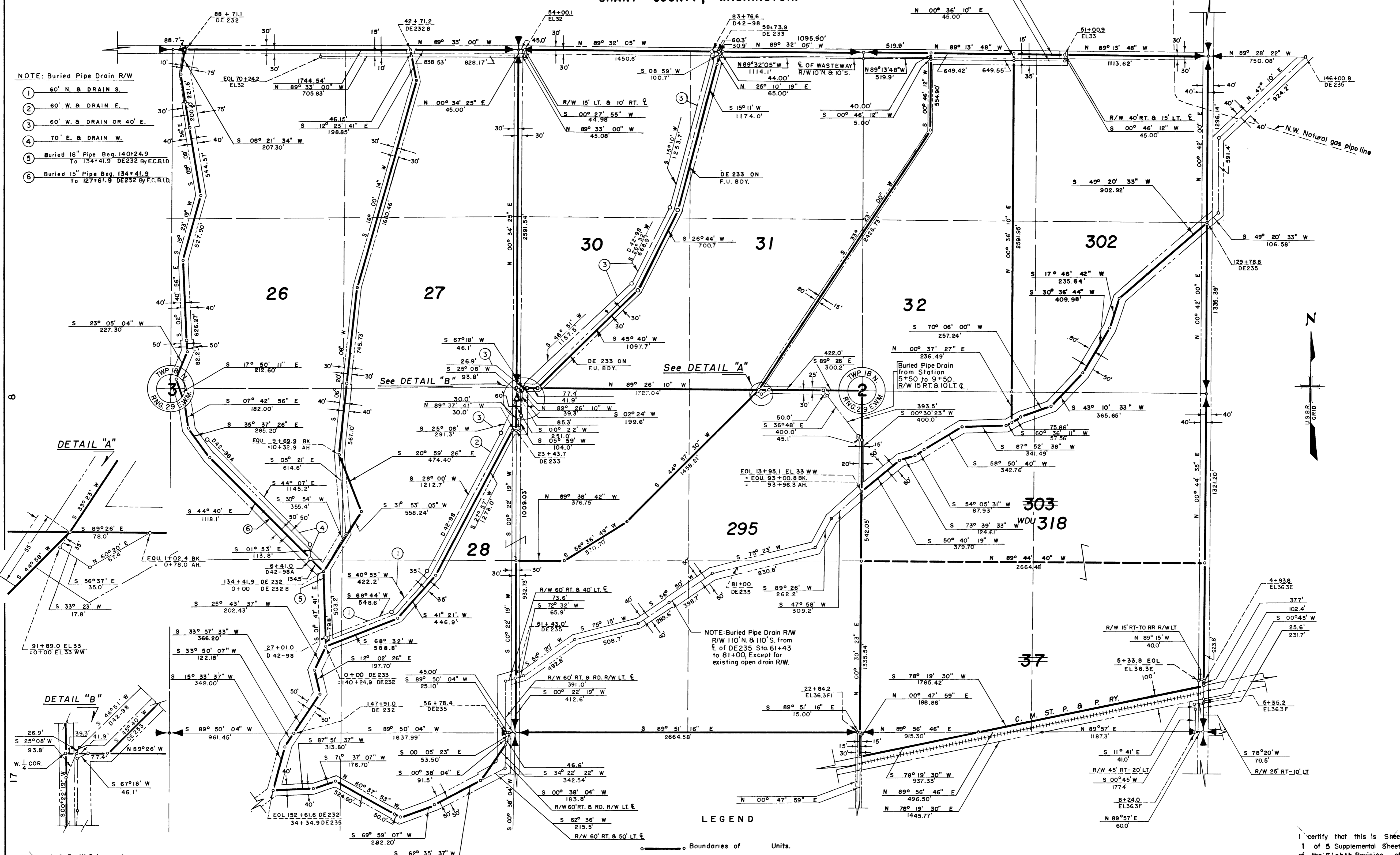


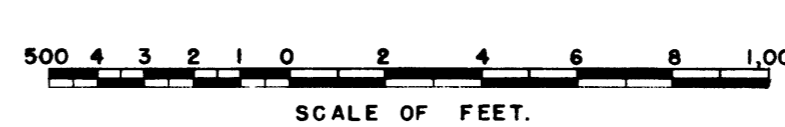
### COLUMBIA BASIN PROJECT - IRRIGATION BLOCK 42 GRANT COUNTY, WASHINGTON.

- NOTE: Buried Pipe Drain R/W
- ① 60' N. & DRAIN S.
  - ② 60' W. & DRAIN E.
  - ③ 60' W. & DRAIN OR 40' E.
  - ④ 70' E. & DRAIN W.
  - ⑤ Buried 18" Pipe Beg. 140+24.9 To 134+41.9 DE 232 By E.C.B.L.D.
  - ⑥ Buried 15" Pipe Beg. 134+41.9 To 127+61.9 DE 232 By E.C.B.L.D.



Drawn A.C.R. W.G.L.  
 Checked C.H.W.-R.J.C.  
 Surveys certified  
A.J. Davidson  
 Chief, Engr. Div.  
 DATE 7-22-60

- LEGEND
- Boundaries of Units.
  - Rights of Way for Roads.
  - Rights of Way for Canals.
  - Rights of Way for Drains.
  - Buried Pipe Drains
  - Former Unit Boundary
- 318** Unit Number



REV. TO 12-31-87	de	REV. TO 6-12-98	LB
REV. TO 11-16-75	de	REV. TO 12-28-73	de
REV. TO 9-1-64	Sam.	REV. TO 12-11-63	DP

I certify that this is Sheet 1 of 5 Supplemental Sheets of the Eighth Revision of the Final Farm Unit Plot of Irrigation Block 42.

M.B. Austin  
 Regional Director  
 DATE 8-1-60