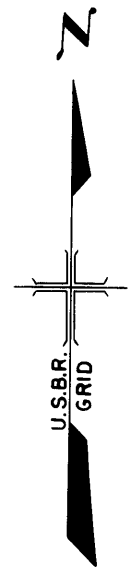
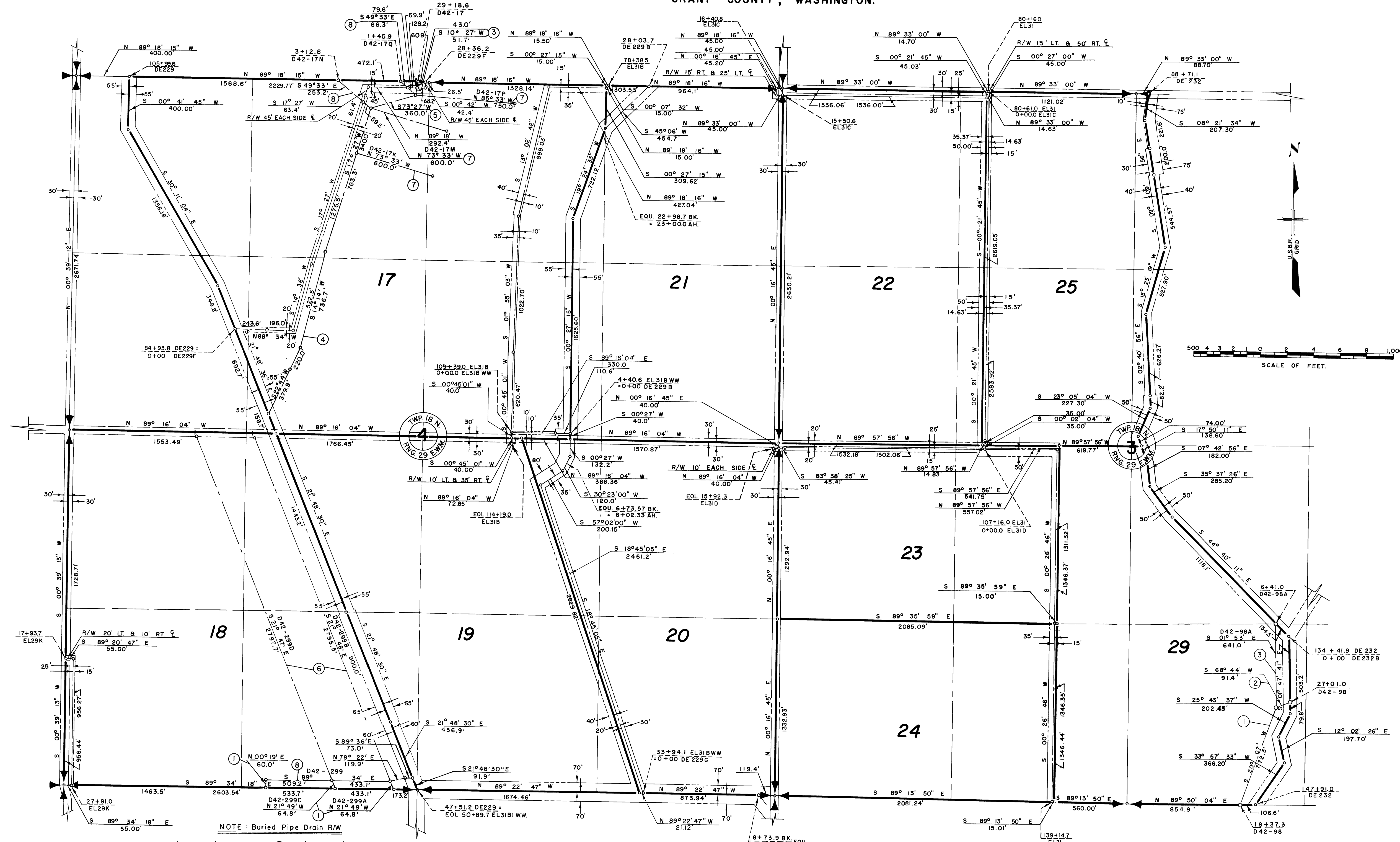


COLUMBIA BASIN PROJECT - IRRIGATION BLOCK 42
GRANT COUNTY, WASHINGTON.



NOTE: Buried Pipe Drain R/W

- ① 45' W. & 55' E.
- ② 60' N. & 40' S.
- ③ 60' W. & TO DRAIN E.
- ④ 55' OR TO DRAIN W. & 45' E.
- ⑤ TO DRAIN N. & 45' S.
- ⑥ 55' W. & 45' E.
- ⑦ 55' N. & 45' S.
- ⑧ 45' N. & 55' S.

- LEGEND
- Boundaries of Units.
 - ==== Rights of Way for Roads.
 - ==== Rights of Way for Canals.
 - ==== Rights of Way for Drains.
 - ==== Rights of Way for Proposed Roads.

18 Unit Number

Drawn A.C.R. DWD
Checked R.V.C.-C.H.W.
Surveys certified
J.D. Humes
Chief, D.B.C. Div.

DATE 7-8-58

REV. TO 9-24-92	de
REV. TO 12-31-87	de
REV. TO 12-28-73	de

I certify that this is Sheet
2 of 10 Supplemental Sheets
of the Sixteenth Revision of
the Final Farm Unit Plat of
Irrigation Block 42.
Wm. H. Tuller
Regional Director (Acting)
DATE 7-25-58