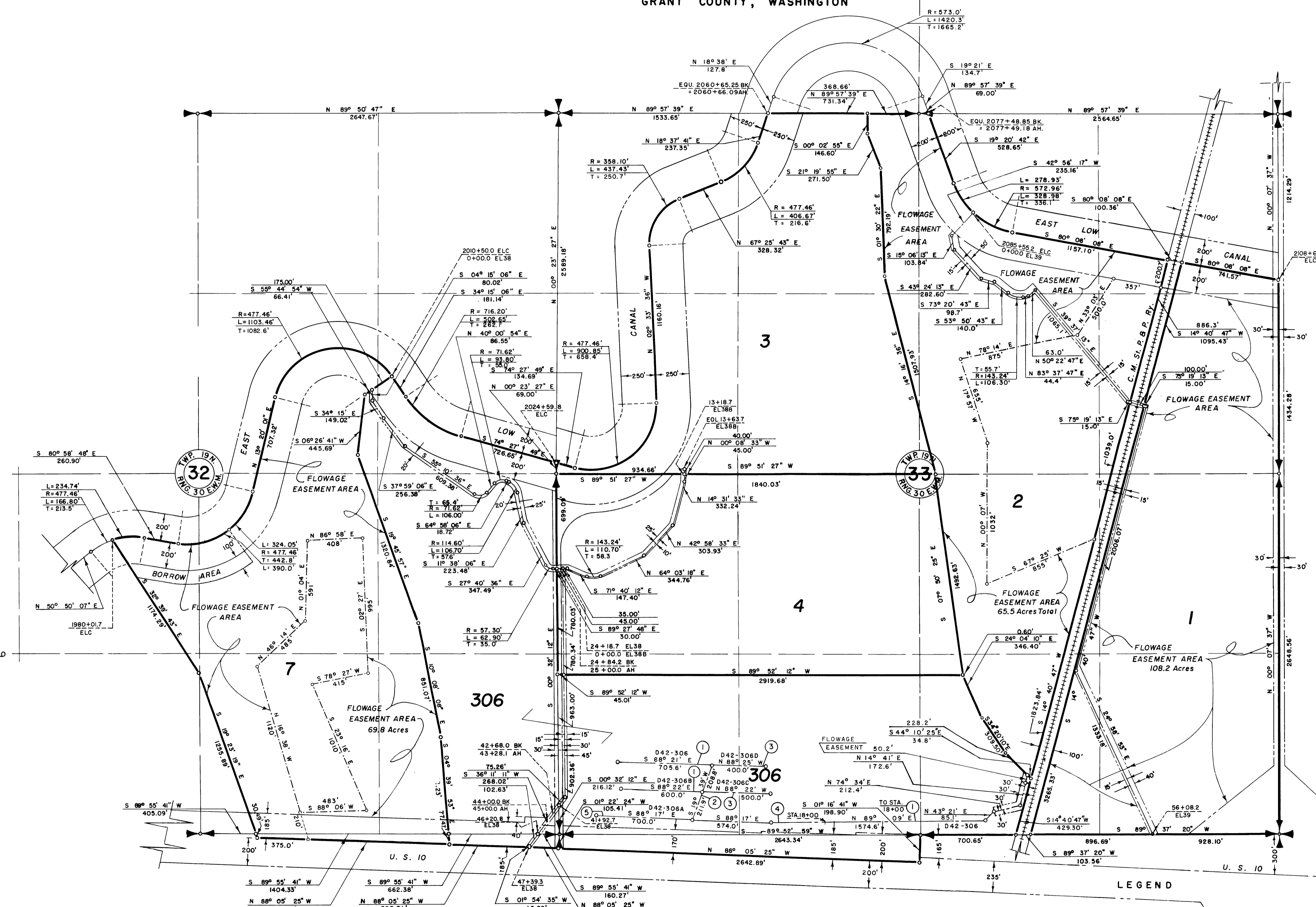
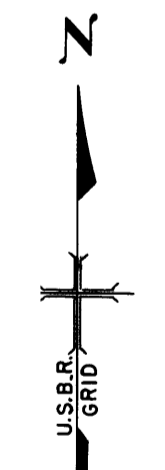


COLUMBIA BASIN PROJECT - IRRIGATION BLOCK 42
GRANT COUNTY, WASHINGTON



- NOTE: Buried Pipe Drain R/W
- ① 45' N. & 55' S.
 - ② 55' W. & 45' E.
 - ③ 55' N. & 45' S.
 - ④ 85' N. & TO RD. R/W S.
 - ⑤ 45' N. & TO RD. R/W S.

REV. TO 6-28-79	dc
REV. TO 12-28-73	dc
REV. TO 9-1-64	B.M.

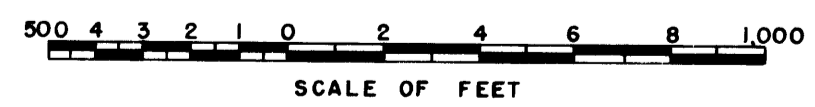


I certify that this is Sheet 1 of 27 Supplemental Sheets of the Seventh Revision of the Final Farm Unit Plat of Irrigation Block 42.

W.G. Draper (Acting)
Regional Director
DATE 8-26-59

LEGEND

- Boundaries of Units
- Rights of Way for Roads
- Rights of Way for Canals
- Rights of Way for Drains
- Flowage Easement Area
- Unit Number



Drawn *H.E.M.*
Checked *R.W.-R.J.C.*
Surveys certified
J.D. Humes
Chief, Engr. Div.
of D.C. Div.
DATE 8-24-59

THIS SHEET NOT RECORDED

9-54

222-116-31316-5