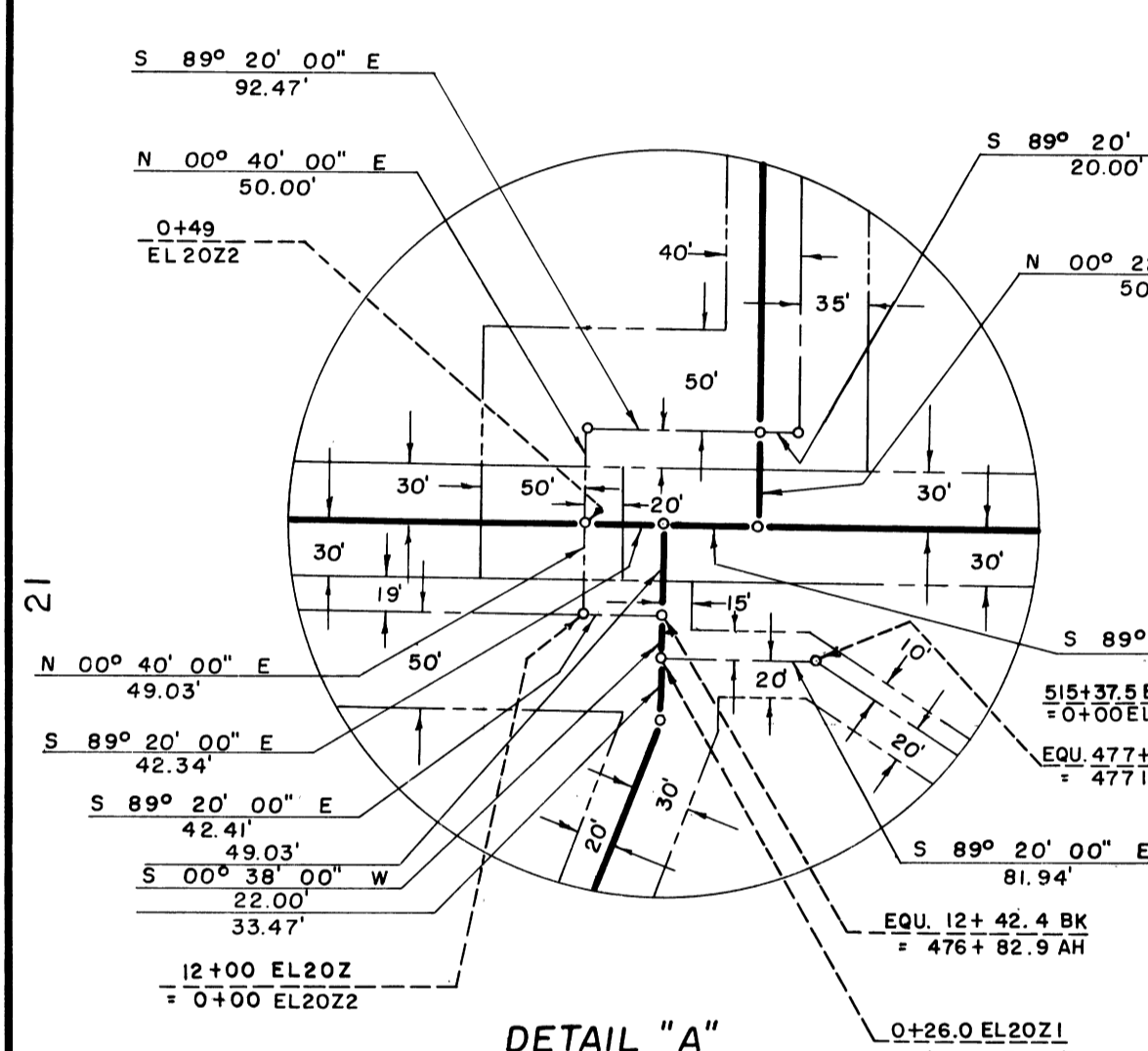
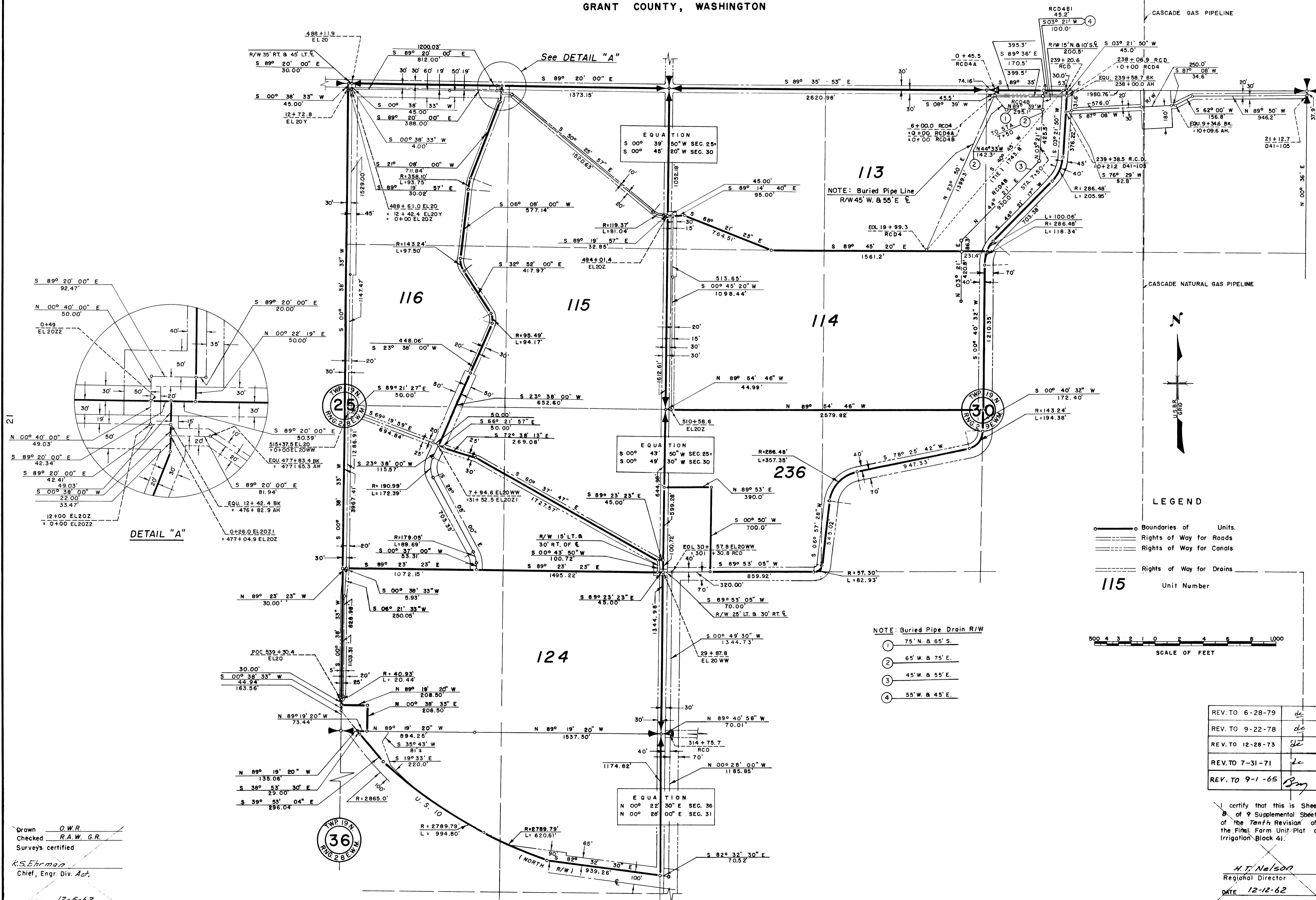


# COLUMBIA BASIN PROJECT - IRRIGATION BLOCK 41 GRANT COUNTY, WASHINGTON



**LEGEND**

- Boundaries of Units.
- Rights of Way for Roads
- Rights of Way for Canals
- Rights of Way for Drains

**115** Unit Number

500 4 3 2 1 0 2 4 6 8 1000  
SCALE OF FEET

- NOTE: Buried Pipe Drain R/W**
- ① 75' N. & 65' S.
  - ② 65' W. & 75' E.
  - ③ 45' W. & 55' E.
  - ④ 55' W. & 45' E.

REV. TO 6-28-79	dc
REV. TO 9-22-78	dc
REV. TO 12-28-73	dc
REV. TO 7-31-71	dc
REV. TO 9-1-65	Bm

Drawn O.W.R.  
 Checked R.A.W. G.R.  
 Surveys certified  
K.S. Ehrman  
 Chief, Engr. Div. Act.  
 DATE 12-5-62

I certify that this is Sheet  
 8 of 9 Supplemental Sheets  
 of the 7<sup>th</sup> Revision of  
 the Fitch Farm Unit Plat of  
 Irrigation Block 41.  
H.T. Nelson  
 Regional Director  
 DATE 12-12-62