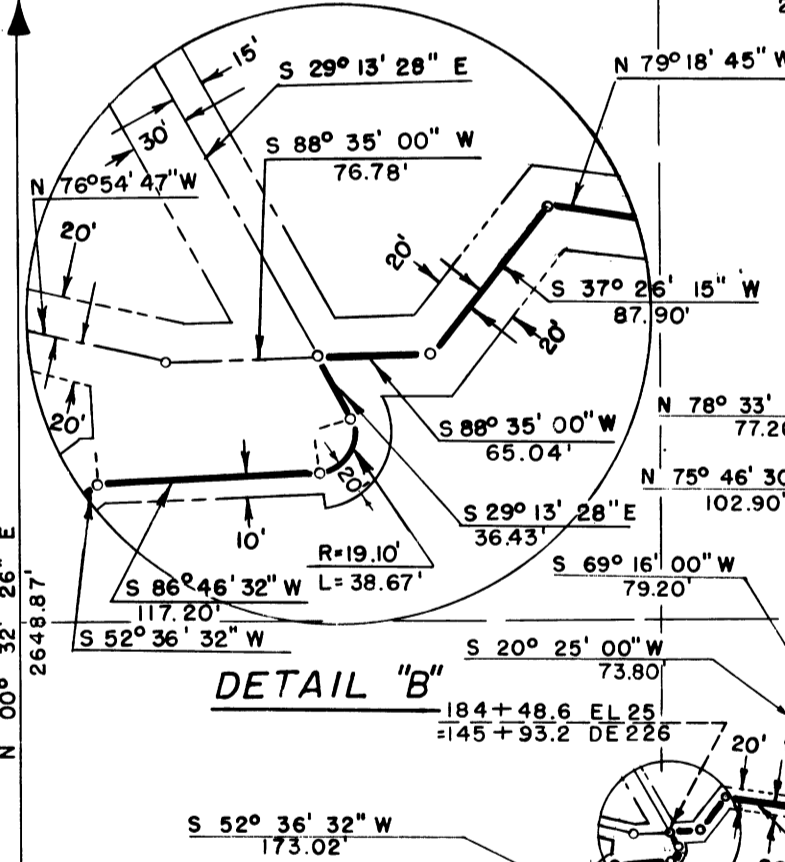
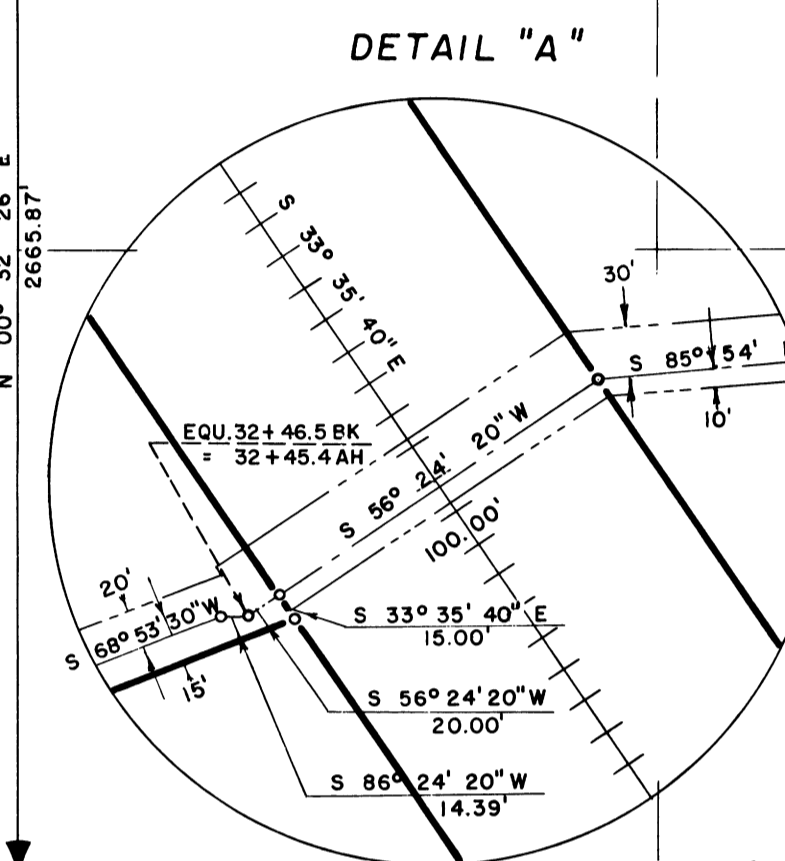
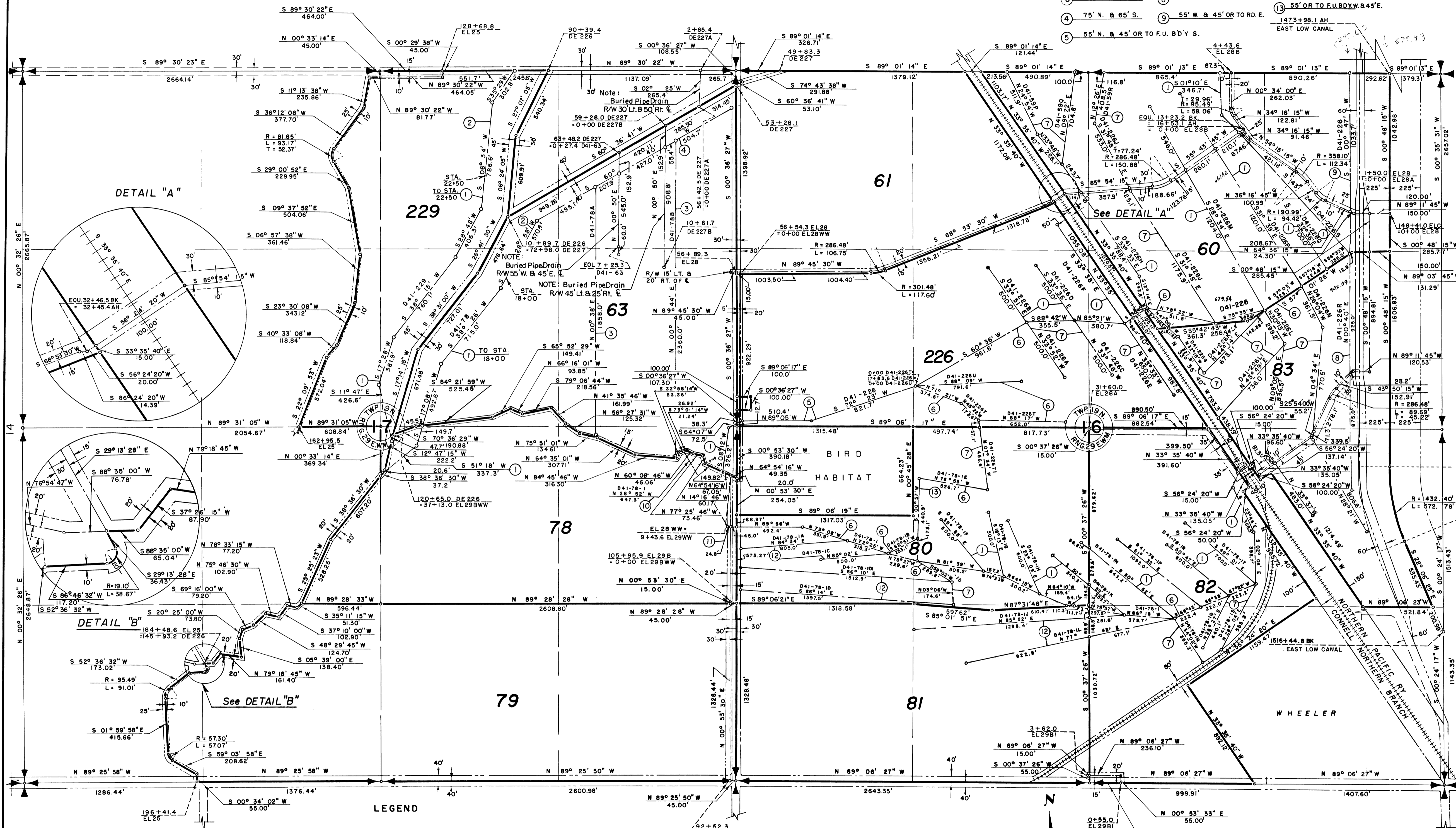


COLUMBIA BASIN PROJECT - IRRIGATION BLOCK 41

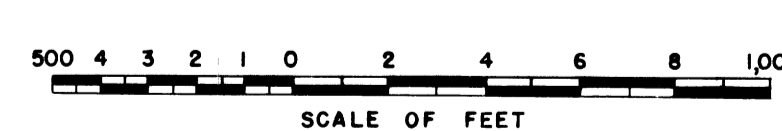
GRANT COUNTY, WASHINGTON

NOTE: Buried Pipe Drain R/W

- ① 55' W. & 45' E.
- ② 75' W. & 65' E.
- ③ 75' W. & 75' E.
- ④ 75' N. & 65' S.
- ⑤ 55' N. & 45' OR TO F.U. B'D'Y S.
- ⑥ 55' N. & 45' S.
- ⑦ 45' W. & 55' E.
- ⑧ 45' W. & 55' OR TO RD. E.
- ⑨ 55' W. & 45' OR TO RD. E.
- ⑩ 25' W. & 25' N.
- ⑪ 25' N. & 25' S.
- ⑫ 45' N. & 55' S.
- ⑬ 55' OR TO F.U. B'D'Y W. & 45' E.



- LEGEND**
- Boundaries of Units
 - =— Rights of Way for Roads
 - - - Rights of Way for Canals
 - - - Rights of Way for Drains
 - - - Rights of Way for Proposed Roads



Drawn: J.A.T.
 Checked: R.A.W.-G.R.
 Surveys certified
 J.D. Humes
 Chief, Eng. Div.
 DATE: 7-17-59

79 Unit Number

REV. TO 9-24-92	dc
REV. TO 12-29-89	dc
REV. TO 9-22-78	dc
REV. TO 9-1-64	W.G.

I certify that this is Sheet
 8 of 11 Supplemental Sheets
 of the Seventh Revision of
 the Final Farm Unit Plat of
 Irrigation Block 41.
 W.G. Draper
 Regional Director (Act)
 DATE 7-30-59