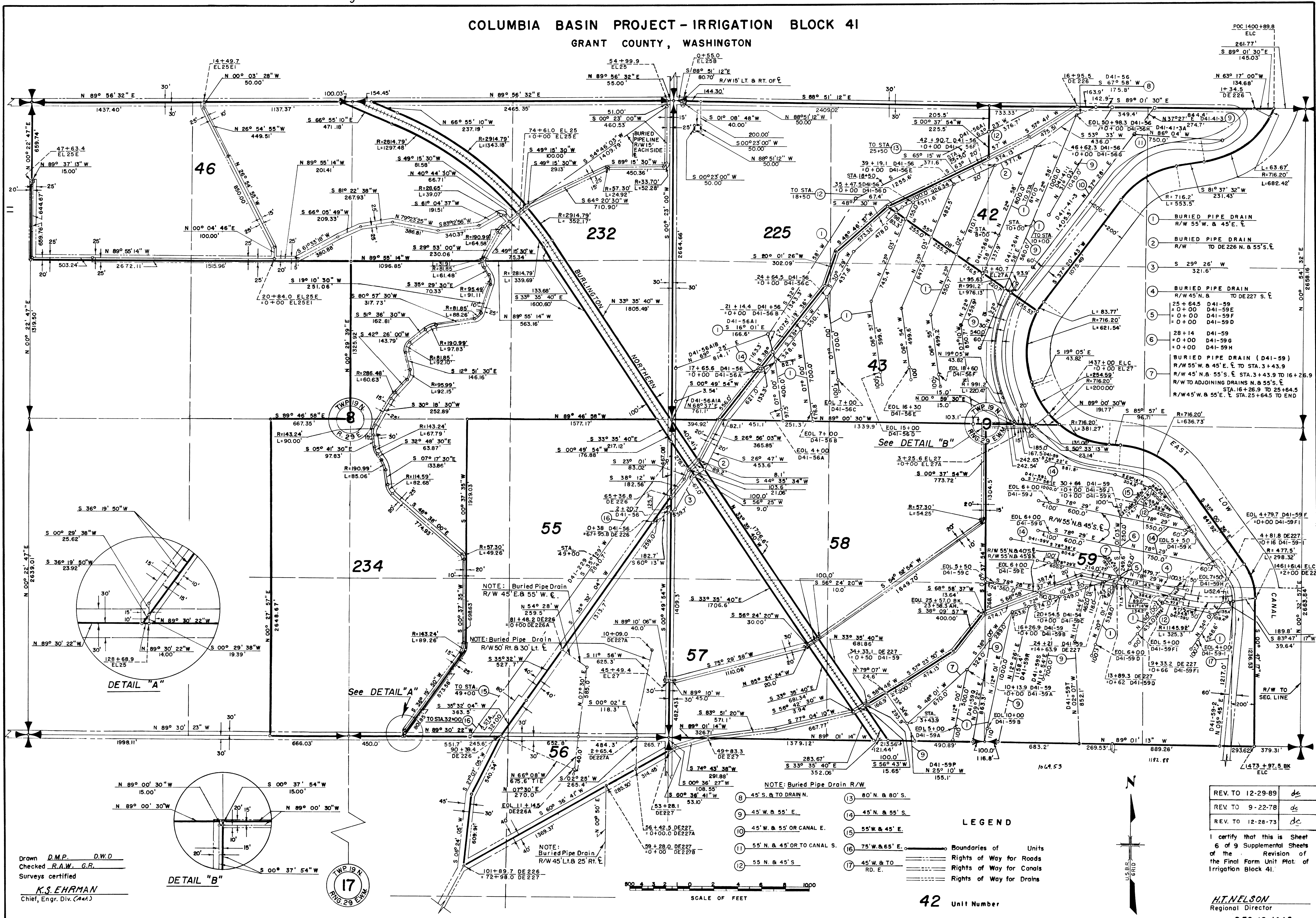


**COLUMBIA BASIN PROJECT - IRRIGATION BLOCK 41**  
**GRANT COUNTY, WASHINGTON**



Drawn D.M.P. D.W.D.  
 Checked R.A.W. G.R.  
 Surveys certified  
K.S. EHRMAN  
 Chief, Engr. Div. (462)

DATE DECEMBER 5, 1962

DETAIL "A"

DETAIL "B"

17  
 TWP. 19 N.  
 R. 29 E.  
 S. 42 N.

- NOTE: Buried Pipe Drain R/W
- 8 45' S. & TO DRAIN N.
  - 9 45' W. & 55' E.
  - 10 45' W. & 55' OR CANAL E.
  - 11 55' N. & 45' OR TO CANAL S.
  - 12 55' N. & 45' S.
  - 13 80' N. & 80' S.
  - 14 45' N. & 55' S.
  - 15 55' W. & 45' E.
  - 16 75' W. & 65' E.
  - 17 45' W. & TO RD. E.

**LEGEND**

- Boundaries of Units
- Rights of Way for Roads
- - - Rights of Way for Canals
- Rights of Way for Drains

**42** Unit Number

REV. TO 12-29-89	dc
REV. TO 9-22-78	dc
REV. TO 12-28-73	dc

I certify that this is Sheet 6 of 9 Supplemental Sheets of the Revision of the Final Farm Unit Plat. of Irrigation Block 41.

H.T. NELSON  
 Regional Director  
 DATE DEC. 12, 1962

222-116-32557-12