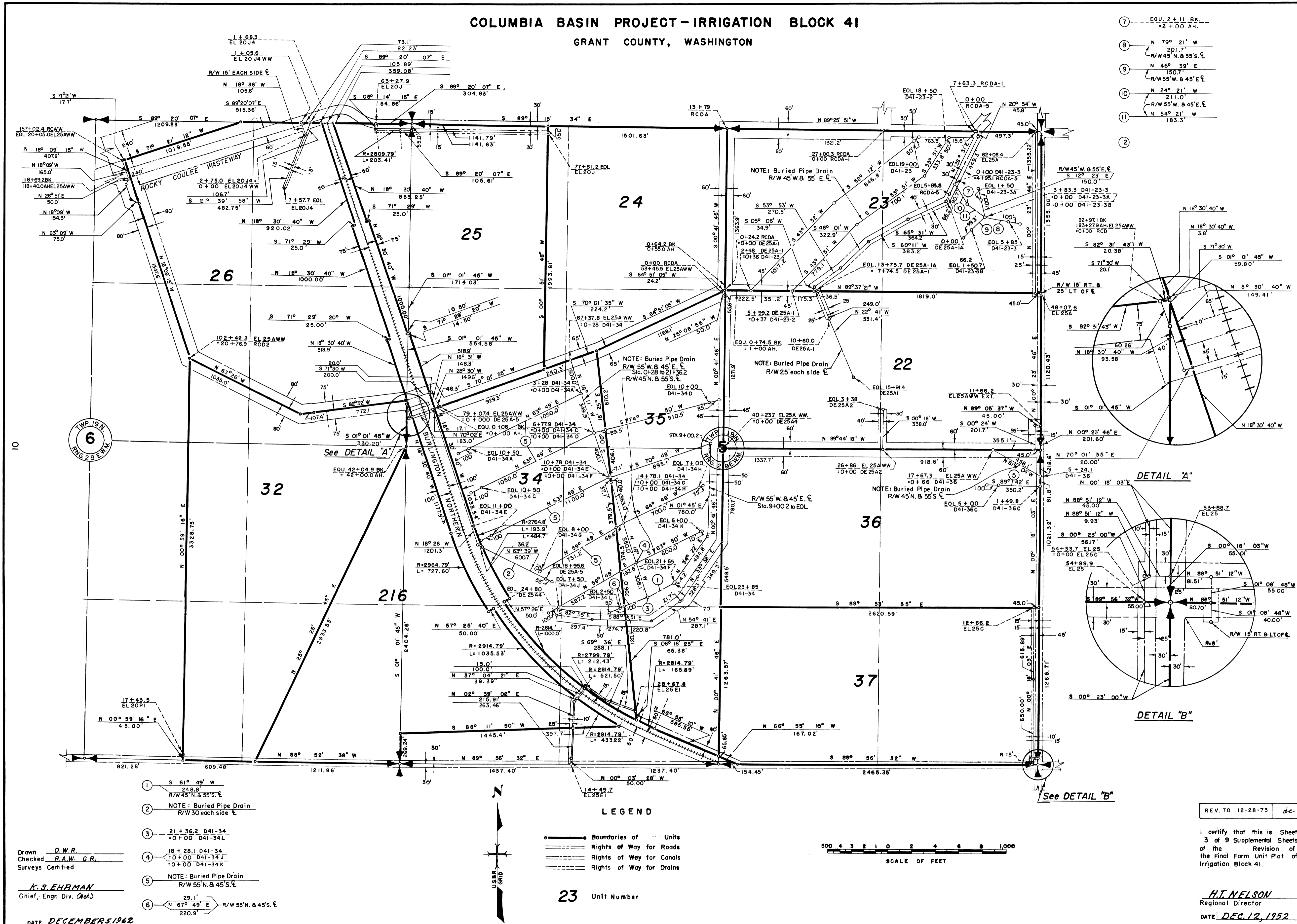
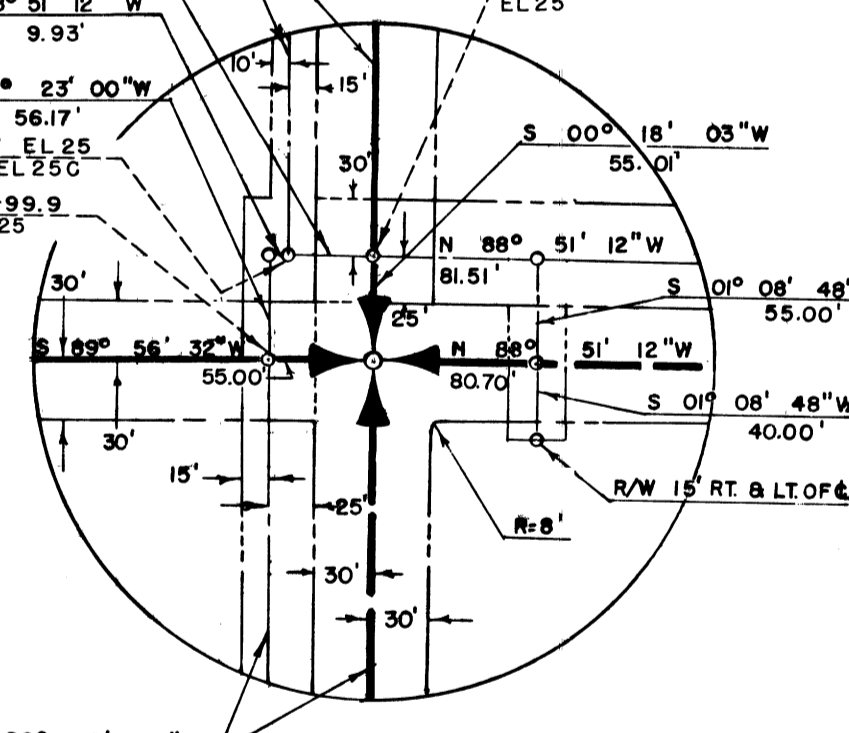
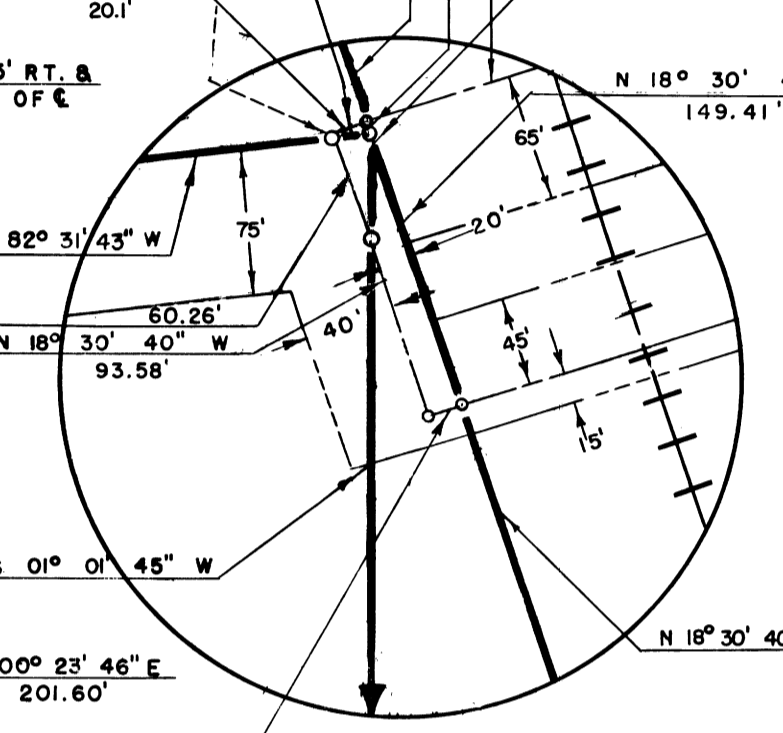


# COLUMBIA BASIN PROJECT - IRRIGATION BLOCK 41

GRANT COUNTY, WASHINGTON



- 7 --- EQU. 2+11 BK. ---  
+2+00 AH.
- 8 --- N 79° 21' W  
201.7'  
R/W 45' N. & 55' S. E.
- 9 --- N 46° 39' E  
150.7'  
R/W 55' W. & 45' E. E.
- 10 --- N 24° 21' W  
211.0'  
R/W 55' W. & 45' E. E.
- 11 --- N 54° 21' W  
183.3'
- 12

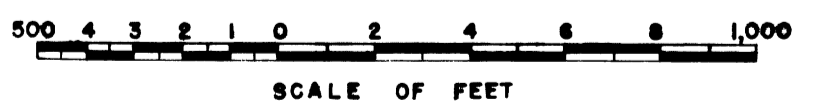


- 1 --- S 61° 49' W  
248.8'  
R/W 45' N. & 55' S. E.
- 2 --- NOTE: Buried Pipe Drain  
R/W 30' each side E.
- 3 --- 21+36.2 D41-34  
+0+00 D41-34L
- 4 --- 18+28.1 D41-34  
+0+00 D41-34J  
+0+00 D41-34K
- 5 --- NOTE: Buried Pipe Drain  
R/W 55' N. & 45' S. E.
- 6 --- 29.1'  
N 67° 49' E --- R/W 55' N. & 45' S. E.  
220.9'

Drawn O.W.R.  
 Checked R.A.W. G.R.  
 Surveys Certified  
K.S. EHRMAN  
 Chief, Engr. Div. (Act.)  
 DATE DECEMBER 5, 1962

**LEGEND**

- Boundaries of Units
- Rights of Way for Roads
- Rights of Way for Canals
- Rights of Way for Drains



23 Unit Number

REV. TO 12-28-73 dc

I certify that this is Sheet  
 3 of 9 Supplemental Sheets  
 of the Revision of the  
 Final Farm Unit Plat of  
 Irrigation Block 41.

H.T. NELSON  
 Regional Director  
 DATE DEC. 12, 1952