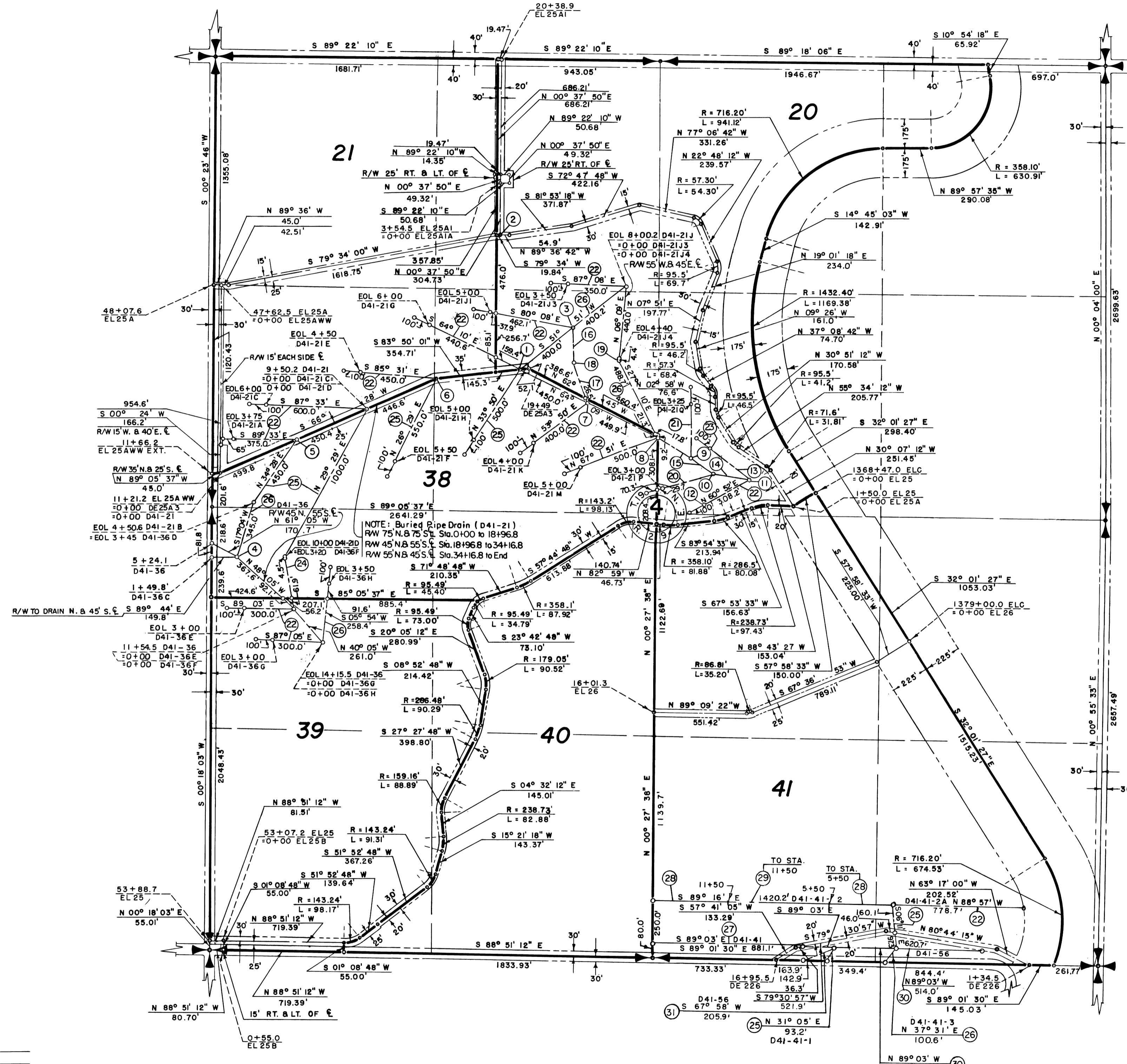
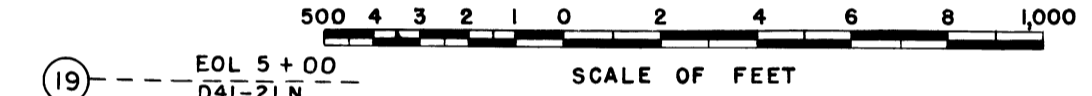


COLUMBIA BASIN PROJECT - IRRIGATION BLOCK 41
GRANT COUNTY, WASHINGTON



- 1 --- 18+96.8 D41-21
+0+00 D41-21H
+0+00 D41-21J
+0+00 D41-21K
- 2 --- 31+49.1 EL 25A
+0+00 EL 25A
- 3 --- 4+00 D41-21J
+0+00 D41-21J1
+0+00 D41-21J2
- 4 --- 6+94.8 D41-36
+0+00 D41-36C
+0+00 D41-36D
- 5 --- 4+99.8 D41-21
+0+00 D41-21A
+0+00 D41-21B
- 6 --- 13+96.8 D41-21
+0+00 D41-21E
+0+00 D41-21F
- 7 --- 23+46.8 D41-21
+0+00 D41-21K
+0+00 D41-21L
- 8 --- 27+96.7 D41-21
+0+00 D41-21M
+0+00 D41-21N
- 9 --- 30+35.0 D41-21
+0+00 D41-21Q
- 10 --- 31+96.2 D41-21
+0+00 D41-21P
- 11 --- 34+16.8 D41-21
+0+00 D41-21R
- 12 --- EOL 37+25
D41-21
- 13 --- S 52° 17' E = 300.0'
R/W 55' N. & 45' E.
- 14 --- N 80° 12' W
220.6'
- 15 --- 161.2'
N 54° 50' W
238.3'
- 16 --- N 00° 09' W
210.5'
R/W 55' N. & 45' E.
- 17 --- S 21° 06' E
225.1' & 26.5'
R/W 45' N. & 55' E.
- 18 --- EOL 2+10.5 D41-21J2
EOL 2+49.6 D41-21L



- 19 --- EOL 5+00
D41-21R
- 20 --- N 74° 59' E
300.0'
R/W 55' N. & 45' E.
- 21 --- S 00° 19' E
325.0'
R/W 65' W. & 35' E.
- 22 --- BURIED PIPE DRAIN
R/W 55' N. & 45' E.
- 23 --- EOL 3+00
D41-21R
- 24 --- S 11° 32' E
255.6'
R/W 45' N. & 55' E.
- 25 --- BURIED PIPE DRAIN
R/W 55' N. & 45' E.
- 26 --- BURIED PIPE DRAIN
R/W 45' W. & 55' E.

LEGEND

- Boundaries of Units
- Rights of Way for Roads
- Rights of Way for Canals
- Rights of Way for Drains

- 27 --- 50' N. & TO RD. S.
- 28 --- 45' N. & 55' S.
- 29 --- 80' N. & 80' S.
- 30 --- TO DRAIN N. & TO RD. S.
- 31 --- TO DRAIN N. & TO FU. BDY. S.

NOTE: Buried Pipe Drain R/W

REV. TO	9-22-78	dc
REV. TO	12-28-73	dc

I certify that this is Sheet 2 of 9 Supplemental Sheets of the Fifth Revision of the Final Farm Unit Plat of Irrigation Block 41

Wm H. Tuller
 Regional Director *act*
 DATE 7-16-56

Drawn R.B.W.
 Checked R.A.W. - G.R.
 Surveys certified
J.D. Humes
 Chief, D.B.C. Div.
 DATE 6-20-56