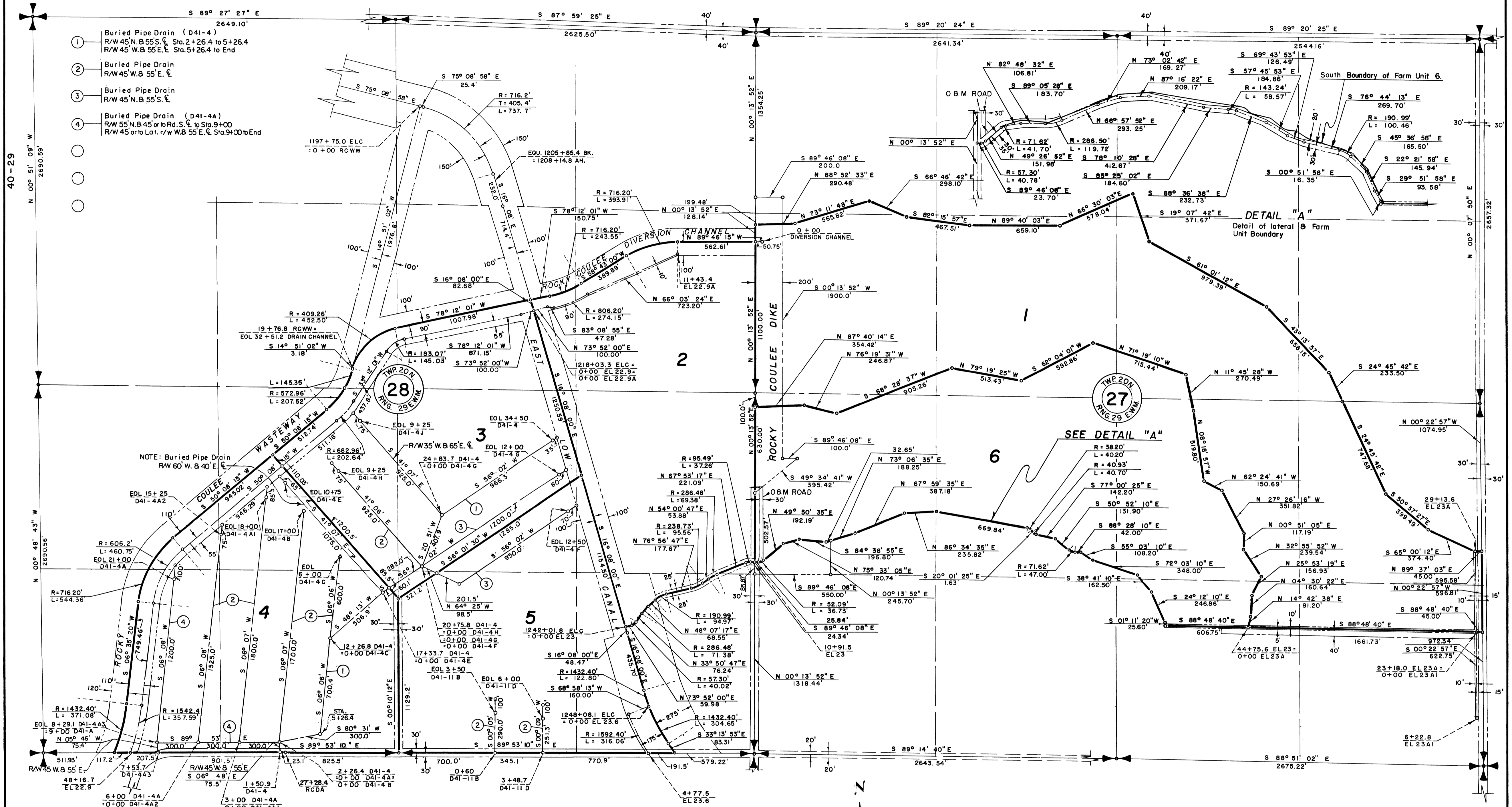


COLUMBIA BASIN PROJECT - IRRIGATION BLOCK 41

GRANT COUNTY, WASHINGTON



- 1 Buried Pipe Drain (D41-4)
R/W 45 N. 85 S. E. Sta. 2+26.4 to 5+26.4
R/W 45 W. 85 E. E. Sta. 5+26.4 to End
- 2 Buried Pipe Drain
R/W 45 W. 85 E. E.
- 3 Buried Pipe Drain
R/W 45 N. 85 S. E.
- 4 Buried Pipe Drain (D41-4A)
R/W 55 N. 85 S. E. to Sta. 9+00
R/W 45 or to Lat. r/w W. 85 E. E. Sta. 9+00 to End

40-29

N 00° 51' 09" W
2690.59'

N 00° 48' 43" W
2690.56'

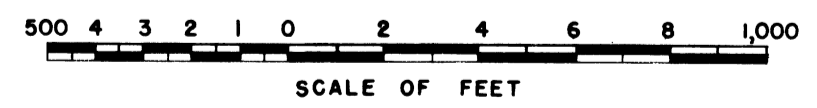
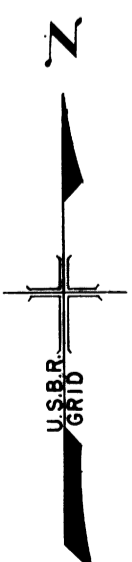
N 00° 48' 43" W
2690.56'

Drawn R.B.W. J.A.T. W.G.L.
Checked R.A.W. - G.R.
Surveys certified

K.S. EHRMAN
Chief, Engr. Div. (Agr.)

DATE DECEMBER 5, 1962

- LEGEND**
- Boundaries of Units
 - Rights of Way for Roads
 - Rights of Way for Canals
 - Rights of Way for Drains
 - Rights of Way for Proposed Roads
- 5** Unit Number



REV. TO 12-28-73 *da*

I certify that this is Sheet
1 of 9 Supplemental Sheets
of the Revision of
the Final Farm Unit Plat of
Irrigation Block 41.

H.T. NELSON
Regional Director
DATE DEC. 12, 1962