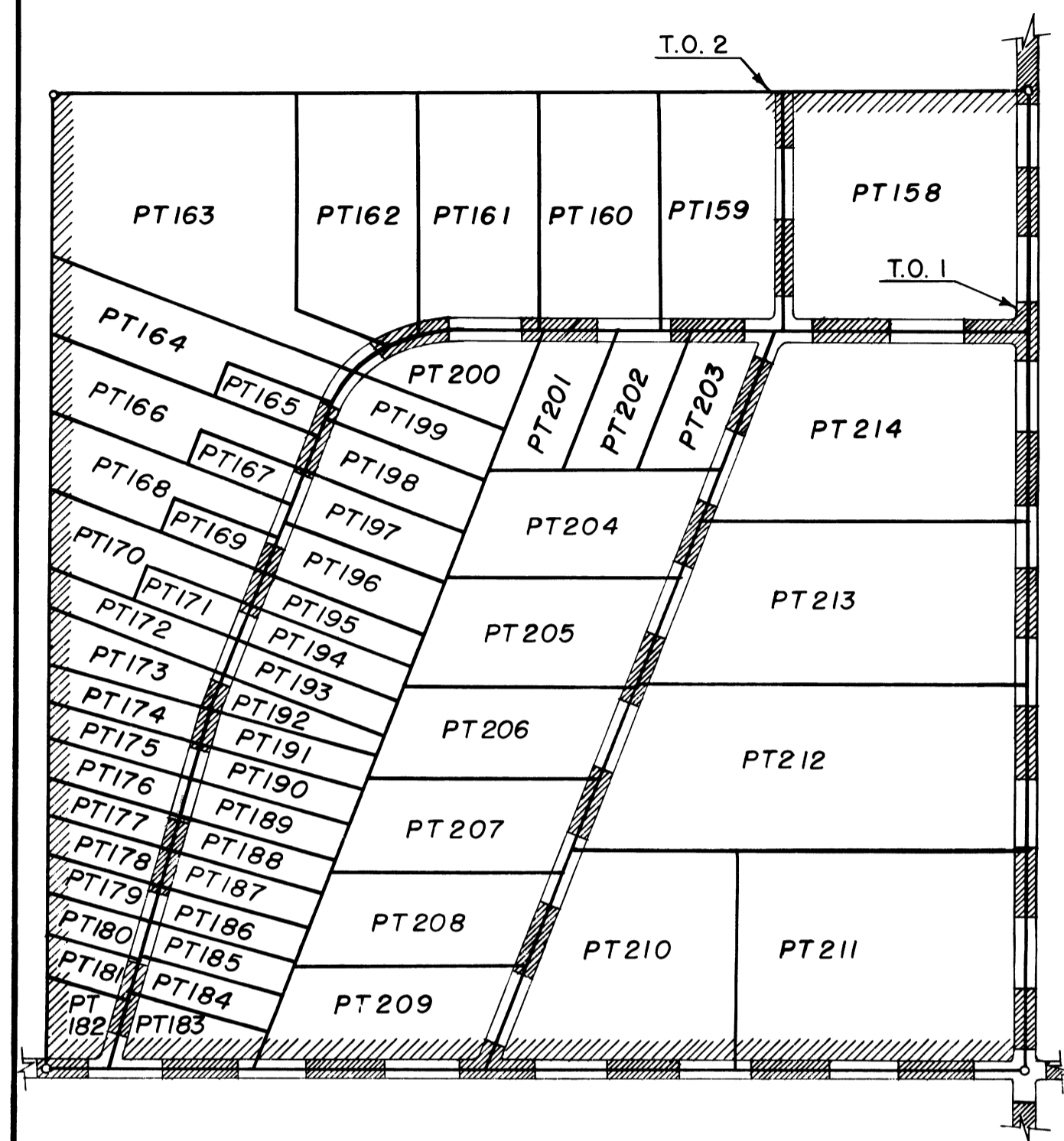
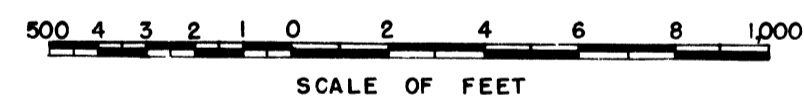


**COLUMBIA BASIN PROJECT - IRRIGATION BLOCK 41**  
**GRANT COUNTY, WASHINGTON**



**DETAIL**



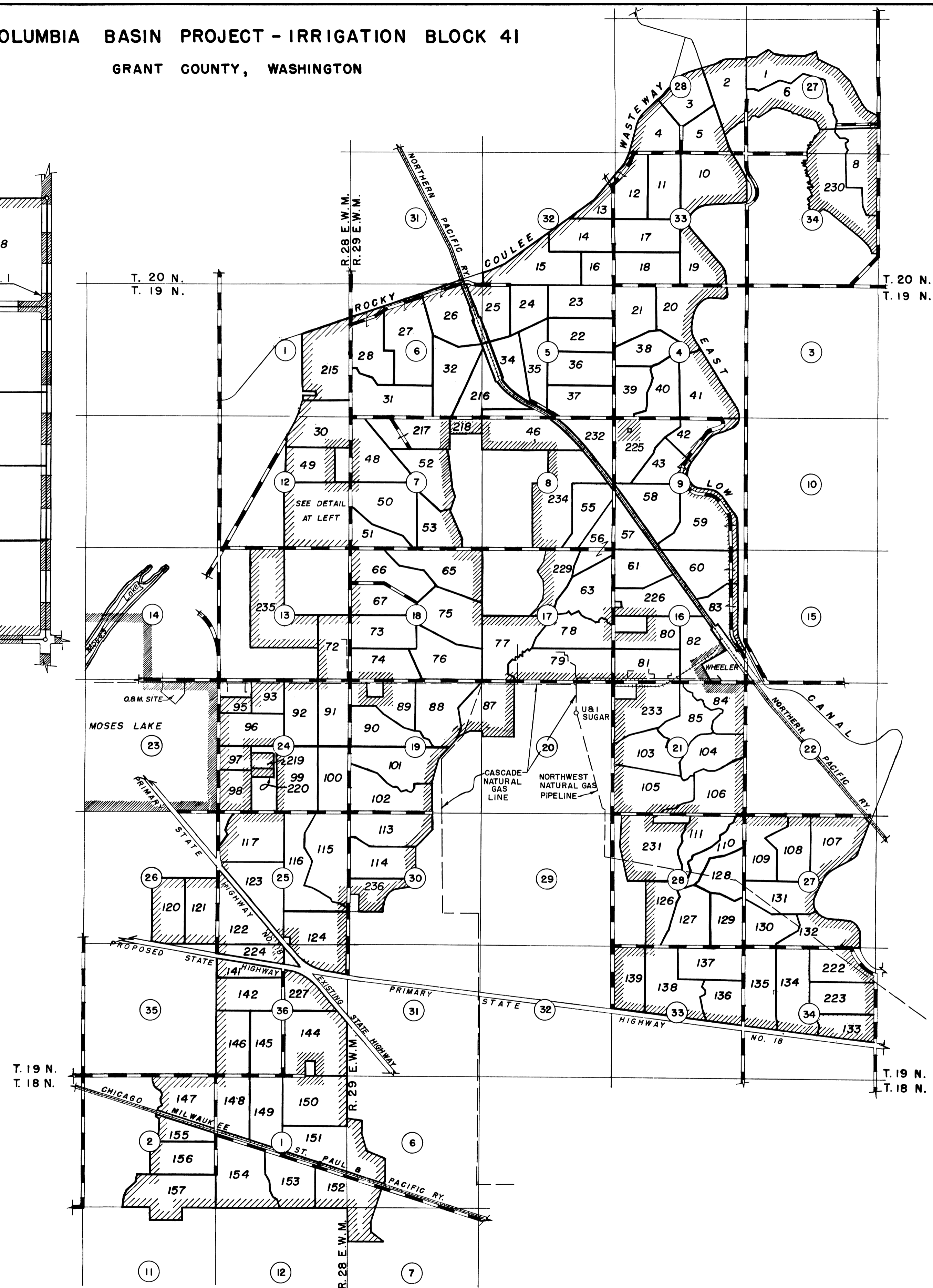
T.O. 1 Waters  
 PT FARM UNITS  
 158, 183 through 214

T.O. 2 Waters  
 PT FARM UNITS  
 159 through 182

Drawn A.M.W. D.W.D. W.G.L.  
 Checked R.A.W. - G.R.  
 Surveys certified

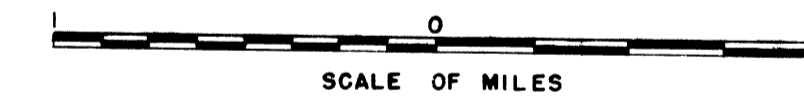
M.S. EHRMAN  
 Chief, Engr. Div. (Act)

DATE DEC. 5, 1962



**LEGEND**

- BOUNDARY OF PLAT
- FARM UNIT BOUNDARY
- ROAD THROUGH FARM UNIT
- ROAD
- SECTION NUMBER
- FARM UNIT NUMBER
- SECTION LINE
- PART TIME FARM UNIT NUMBER



I certify that this is Sheet  
 1 of 2 General Map Sheets of  
 the Tenth Revision of the  
 Final Farm Unit Plat for  
 Irrigation Block 41 showing  
 the farm unit boundaries and  
 a tabulation of the acreages  
 by land classes in each Farm  
 Unit.

H.I. NELSON  
 Regional Director

DATE DEC. 12, 1962