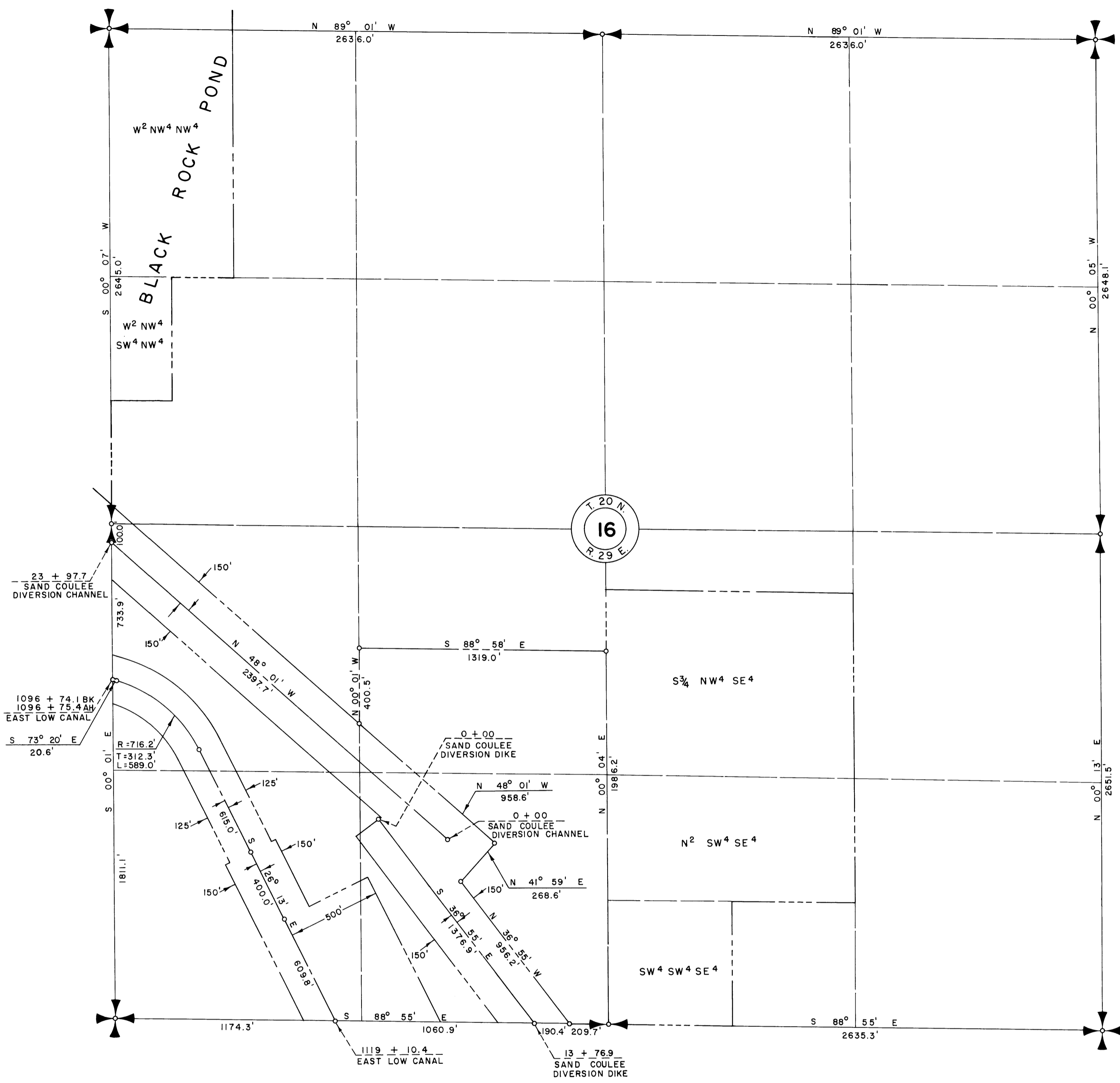
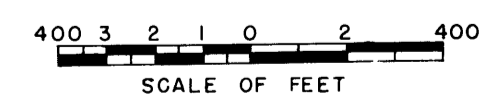


23

28

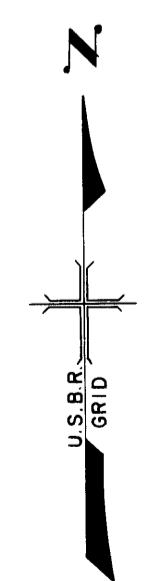


Drawn P.J.S.
 Checked E.S.M.
 Surveys certified
V.D.Humes
 Chief, D&C. Div.
 DATE 8-2-57



LEGEND

- ==== Rights of Way for Roads
- ==== Rights of Way for Canals
- ==== Rights of Way for Drains
- ==== Rights of Way for Proposed Roads



NOTE: This drawing supersedes and replaces Drawing No. 42 attached to and filed with Farm Unit Plat of Irrigation Block 40, as recorded in Grant County on

Wm H. Tuller
 Regional Director (Acting)
 DATE 8-20-57