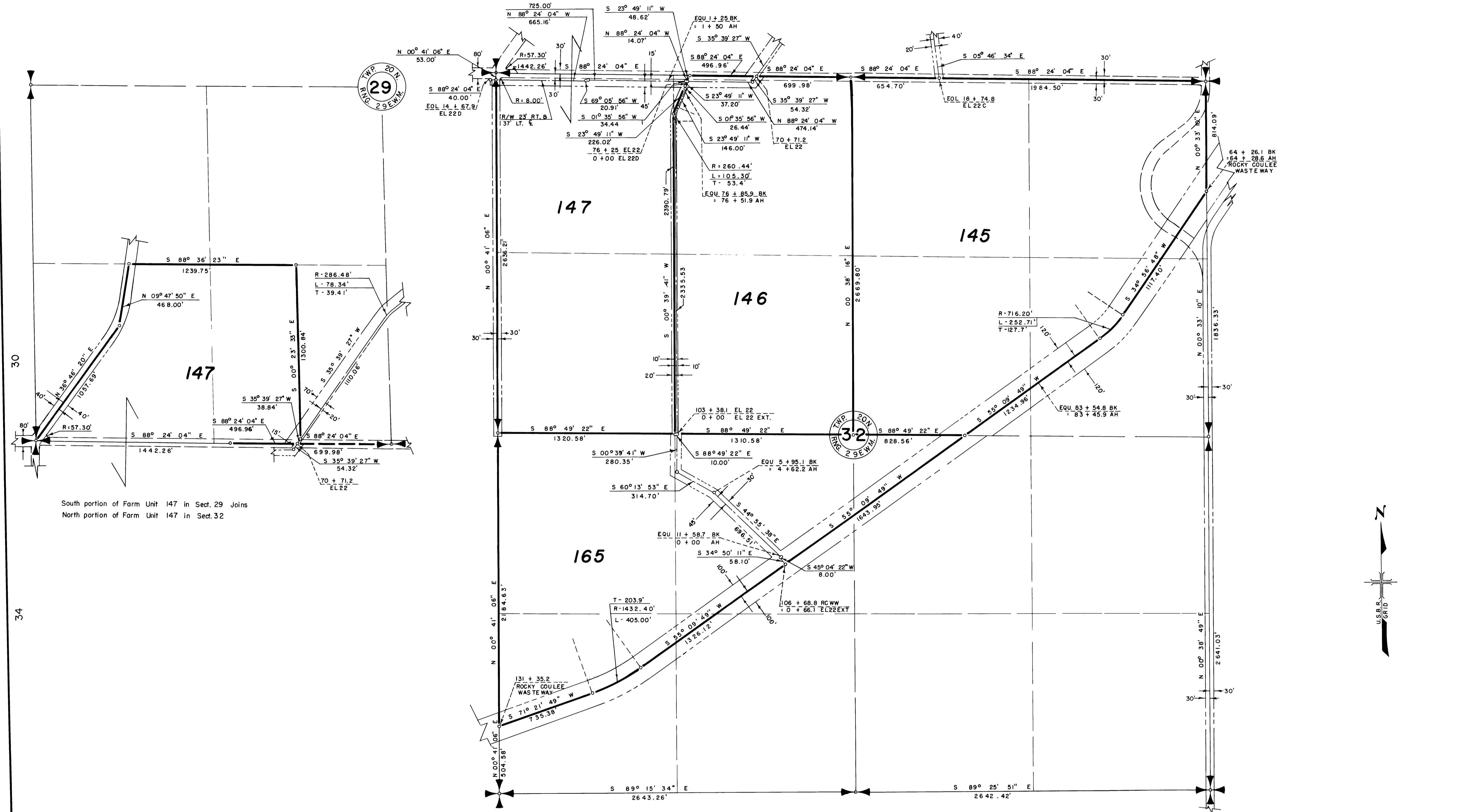


COLUMBIA BASIN PROJECT IRRIGATION BLOCK 40 GRANT COUNTY, WASHINGTON



South portion of Farm Unit 147 in Sect. 29 Joins
North portion of Farm Unit 147 in Sect. 32

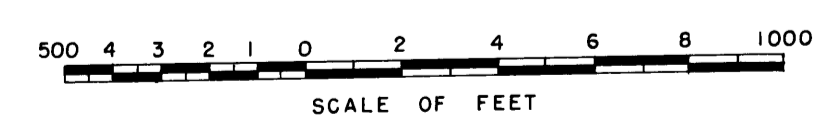
LEGEND

- Boundaries of Units
 - Rights of Way for Roads
 - Rights of Way for Canals
 - Rights of Way for Drains
 - Rights of Way for Proposed Roads
- 145** Unit Number

Drawn A.M.W. H.E.M. W.G.L.
Checked C.W.M. C.N.Y.
Surveys certified

W.C. Christopher
Chief, Engr. Div. (Acting)

DATE 8-21-53



I certify that this is Sheet
23 of 24 Supplemental Sheets
of the Revision of
the Final Farm Unit Plat of
Irrigation Block 40.

H.T. Nelson
Regional Director
DATE 9-11-53