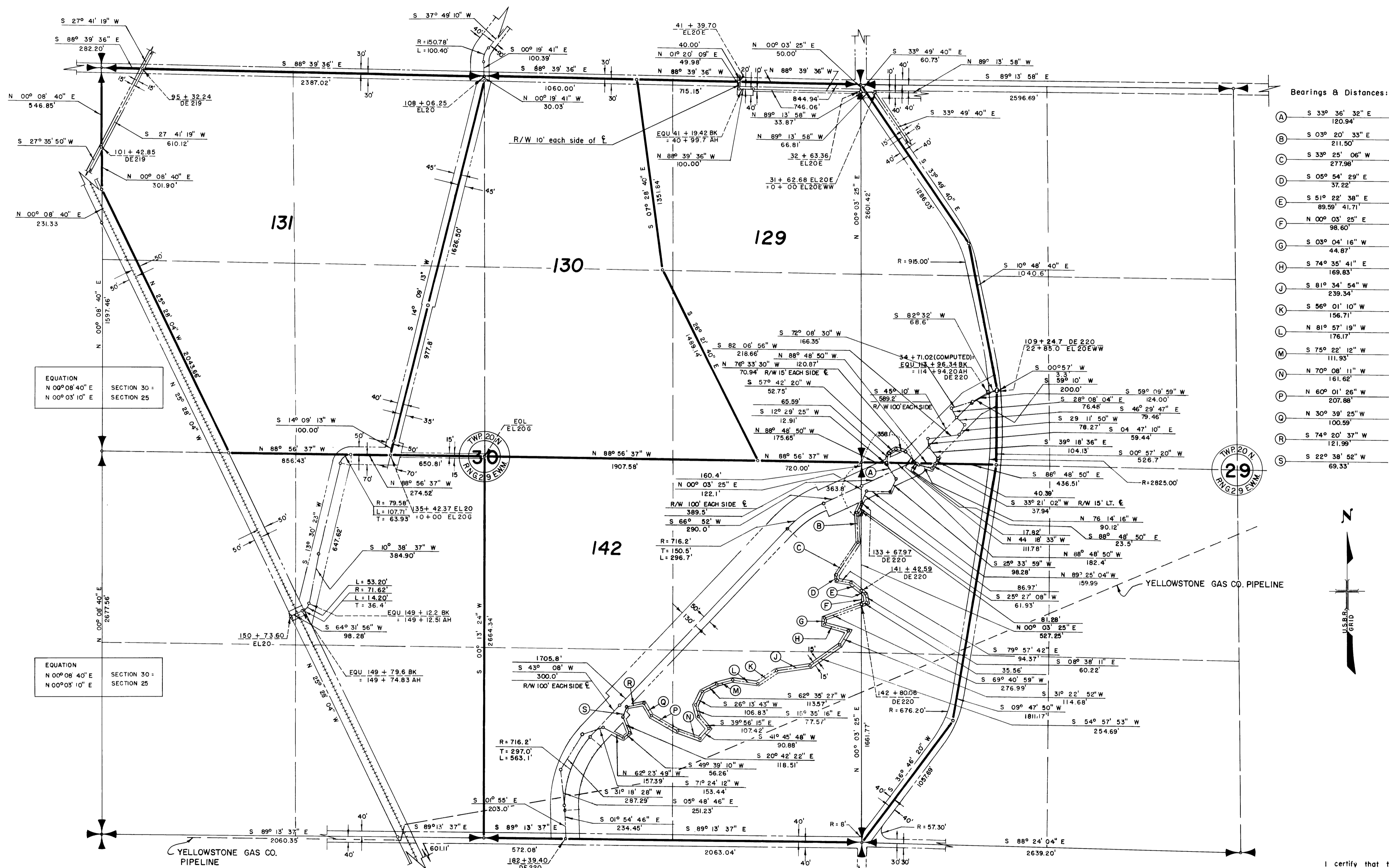


COLUMBIA BASIN PROJECT - IRRIGATION BLOCK 40 GRANT COUNTY, WASHINGTON



Bearings & Distances:

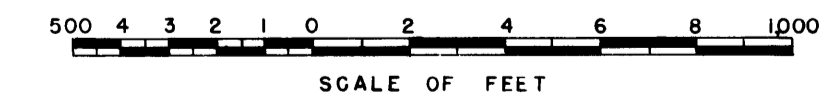
A	S 33° 36' 32" E	120.94'
B	S 03° 20' 33" E	211.50'
C	S 33° 25' 06" W	277.98'
D	S 05° 54' 29" E	37.22'
E	S 51° 22' 38" E	89.59'
F	N 00° 03' 25" E	98.60'
G	S 03° 04' 16" W	44.87'
H	S 74° 35' 41" E	169.83'
J	S 81° 34' 54" W	239.34'
K	S 56° 01' 10" W	156.71'
L	N 81° 57' 19" W	176.17'
M	S 75° 22' 12" W	111.93'
N	N 70° 08' 11" W	161.62'
P	N 60° 01' 26" W	207.88'
Q	N 30° 39' 25" W	100.99'
R	S 74° 20' 37" W	121.99'
S	S 22° 38' 52" W	69.33'

EQUATION
N 00° 08' 40" E
N 00° 03' 10" E

EQUATION
N 00° 08' 40" E
N 00° 03' 10" E

LEGEND

- Boundaries of Units
- ==== Rights of Way for Roads
- Rights of Way for Canals
- Rights of Way for Drains
- Rights of Way for Proposed Roads



Drawn R.L.B. H.E.M. C.M.S.
 Checked C.W.M. C.N.Y.
 Surveys Certified
V.D. Humes
 Chief, D.F.C. Div.
 DATE 8-9-57

I certify that this is Sheet
 7 of 10 Supplemental Sheets
 of the Sixteenth Revision of
 the Final Farm Unit Plat of
 Irrigation Block 40.
Wm. H. Tuller
 Regional Director (Acting)
 DATE 8-20-57