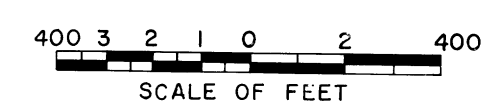
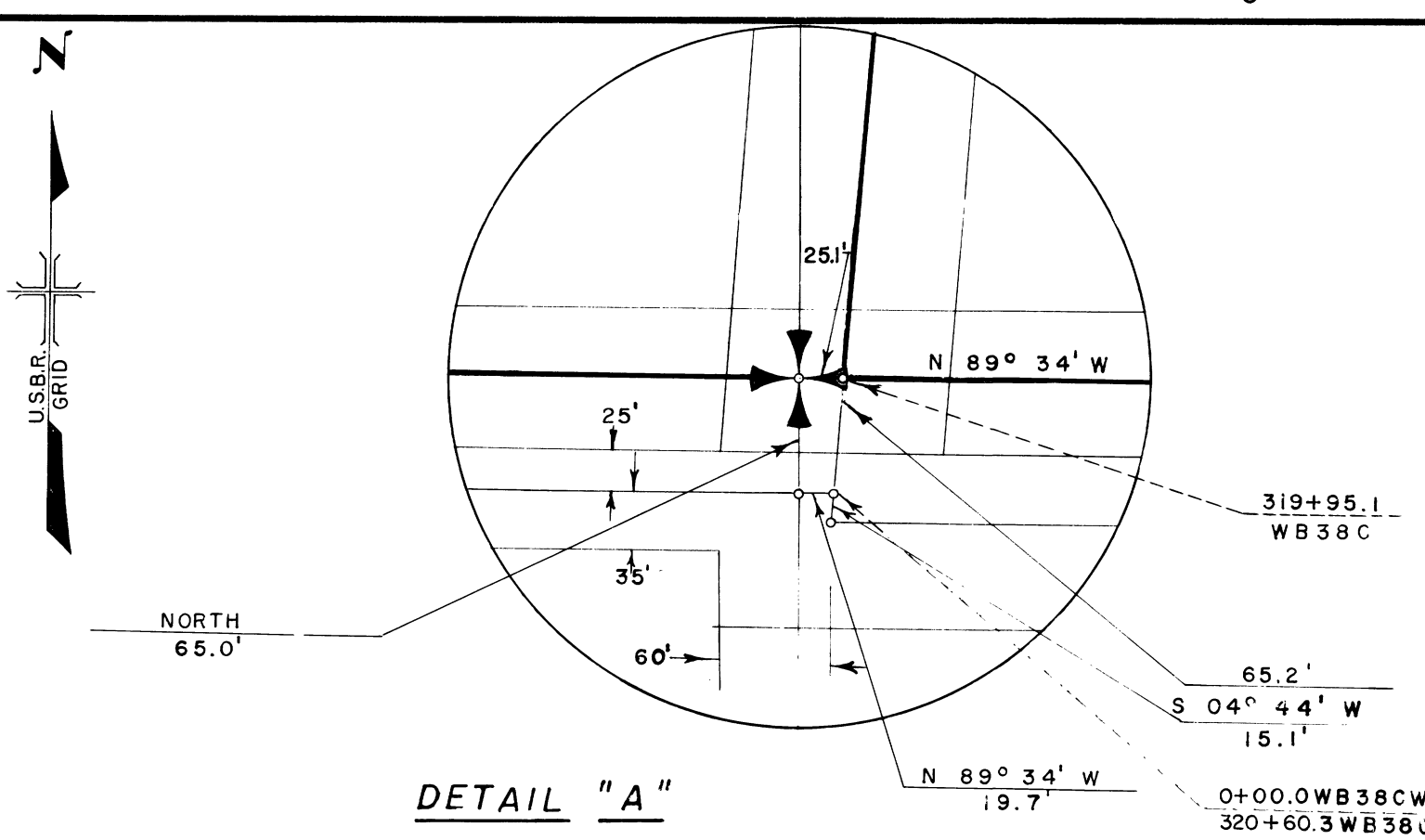


LEGEND

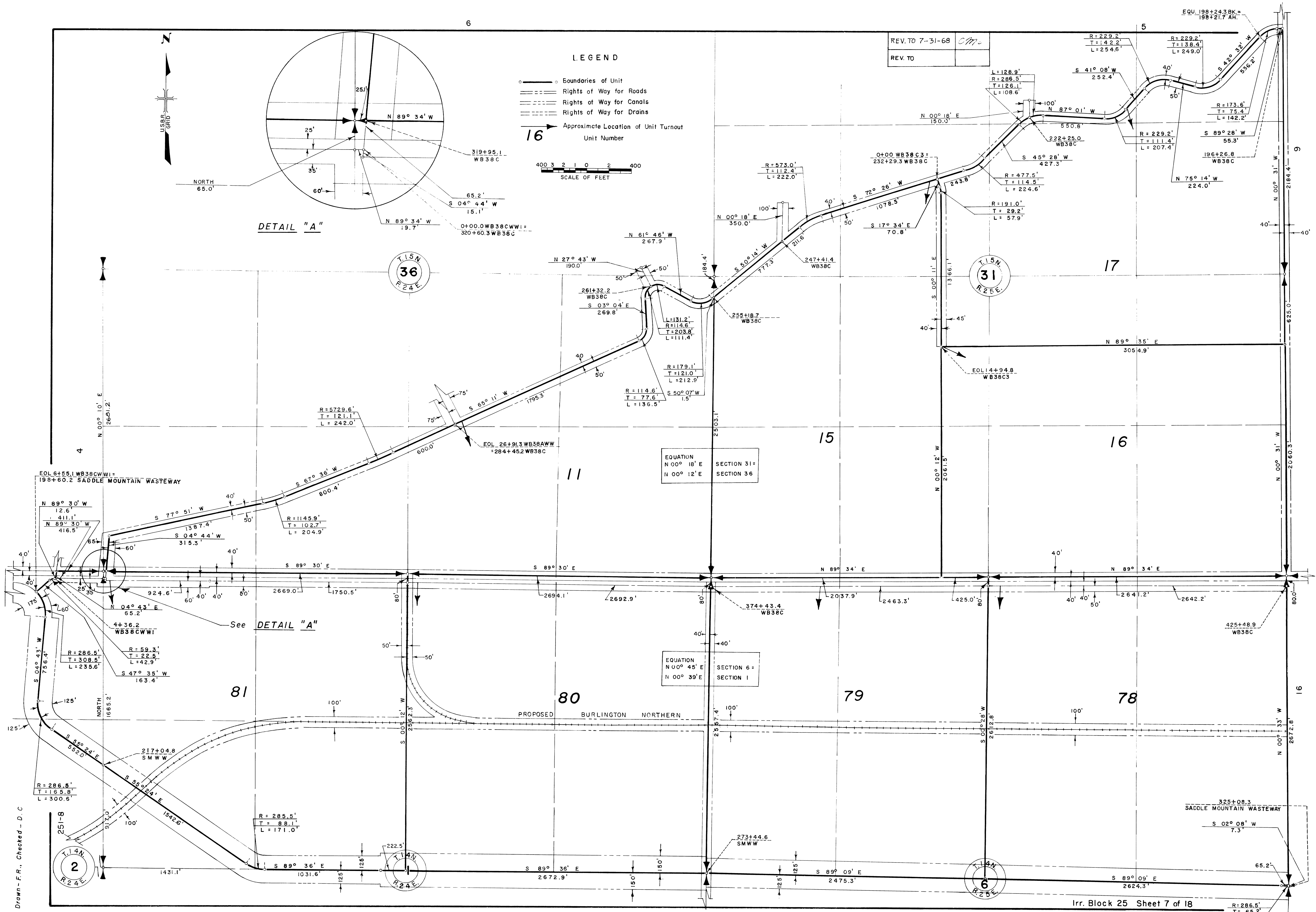
- Boundaries of Unit
- ▬ Rights of Way for Roads
- ▬▬ Rights of Way for Canals
- ▬▬▬ Rights of Way for Drains
- ➔ Approximate Location of Unit Turnout Unit Number



DETAIL "A"



REV. TO	7-31-68	<i>CM</i>
REV. TO		



Drawn - F.R., Checked - D.C.