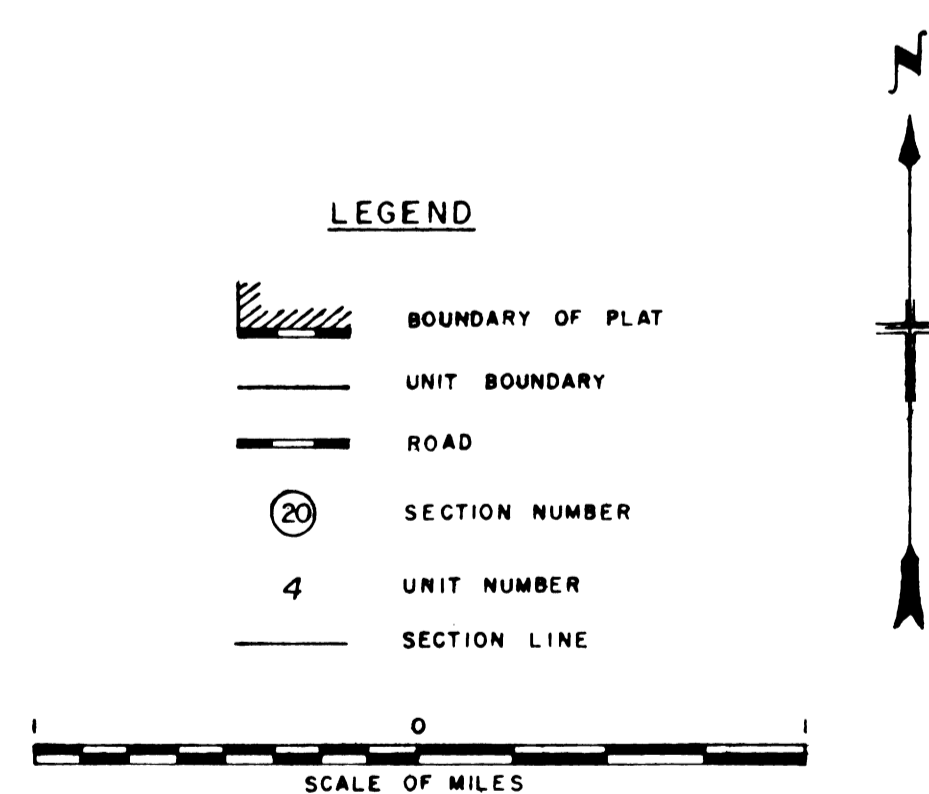
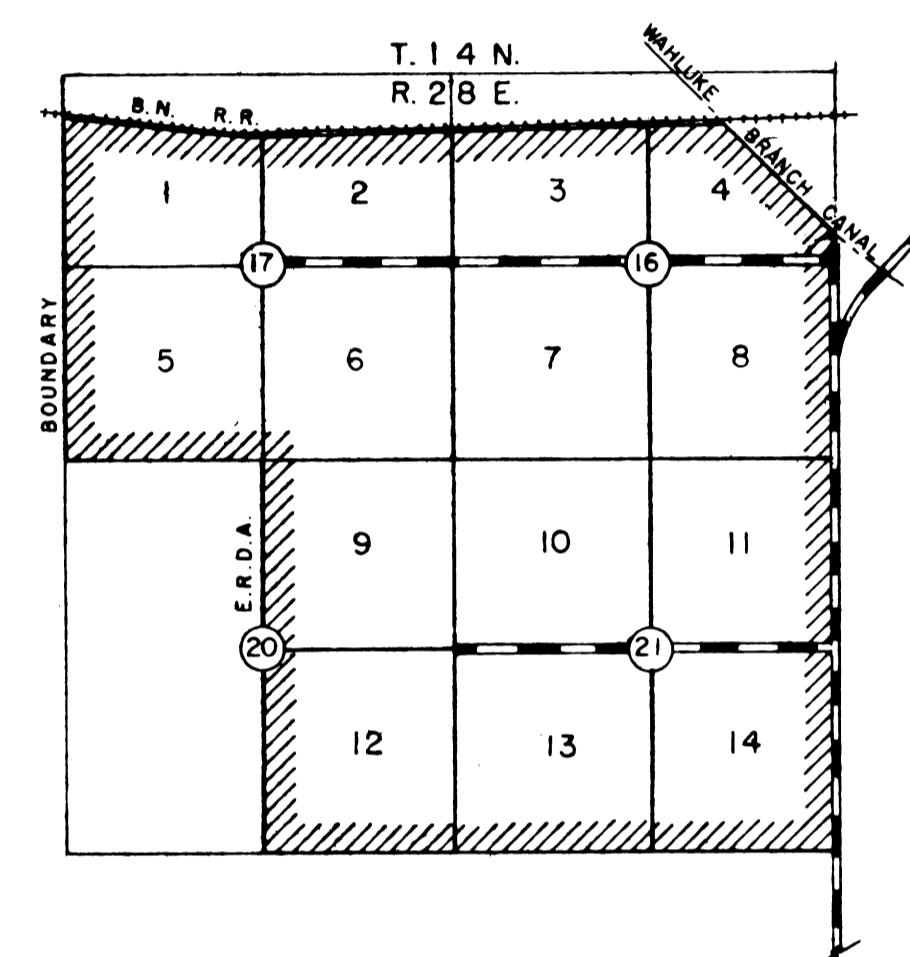


FRANKLIN COUNTY, WASHINGTON

[illegible]

### TENTATIVE IRRIGABLE AREA TABULATION

This tentative acreage tabulation is based on a tentative land classification survey made under the provisions of the Federal Reclamation laws.

1/-All units in the block, unless designated otherwise, are special water delivery units. A special water delivery unit is a unit of land normally served by a single turnout in which all or a portion of the unit is classified for sprinkler irrigation only or for any method other than the method of irrigation normally used in a unit.

2/--Lands in Class 6 are regarded as nonirrigable.

NOTE: As of the date of this plat, the acreage for the units shown hereon are tentative and subject to change. These acreages may be modified by additions or deletions. A final irrigable area determination for the Block will be made prior to the end of the development period for the Block for the purposes of water service and project construction repayment.