

UNITED STATES
DEPARTMENT OF THE INTERIOR
BUREAU OF RECLAMATION
Sacramento River Division, Central Valley Project, California

AMENDMENT TO THE EXISTING CONTRACT BETWEEN THE UNITED STATES
AND
COUNTY OF COLUSA
PROVIDING FOR
PROJECT WATER SERVICE AND FACILITIES REPAYMENT

Exhibits

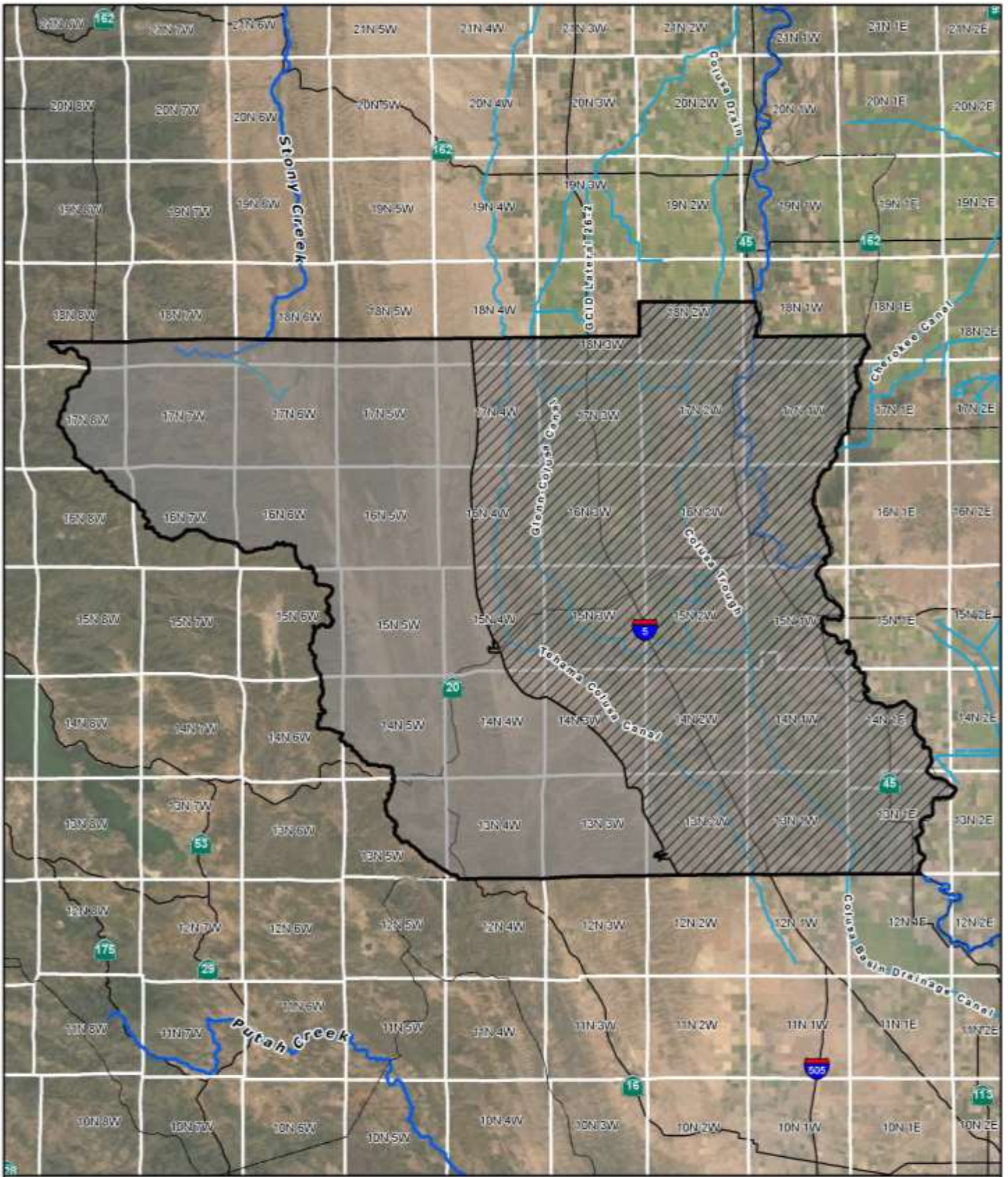
Exhibit A – Map of Contractor’s Service Area



This Exhibit is unchanged from current Contract.

Exhibit B – Rates and Charges

This Exhibit is unchanged from current Contract and is updated annually. Rate Schedules may be found at:
<https://www.usbr.gov/mp/cvpwaterrates/ratebooks/index.html>

Exhibit C – Repayment Obligation



-  District Boundary
-  Contractor's Service Area

County of Colusa
 Contract No. 14-06-200-8310A-P
 Exhibit A



— BUREAU OF —
RECLAMATION

Date: 9/22/2010
 File Name: N:\Districts\Contractors\county_of_colusa\county_of_colusa_20200919_107.mxd



N
 602-202-124

**Exhibit B
County of Colusa
2020 Rates and Charges
(Per Acre-Foot)**

District Form - Irrigation/M
Contract No.
14-06-200-8310A-P

	M&I Water
COST-OF-SERVICE (COS) RATES	
Construction Costs	\$0.00
O&M Component	
Water Marketing	\$6.12
Storage	\$14.99
Conveyance	\$0.00
Direct Pumping	\$0.00
ARRA Component	\$0.00
Deficit Rates	
Interest Bearing	\$0.00
TOTAL COS RATE (Tier 1 Rate)	\$21.11
IRRIGATION FULL COST RATE (RRA)	
Section 202(3) Rate is applicable to a Qualified Recipient or to a Limited Recipient receiving irrigation water on or before October 1, 1981.	
Section 205(a)(3) Rate is applicable to a Limited Recipient that did not receive irrigation water on or before October 1, 1981.	
M&I FULL COST RATE	\$0.00
CHARGES AND ASSESSMENTS <i>(Payments in Addition to Rates)</i>	
P.L. 102-575 Surcharges (Restoration Fund Payments) ¹ [Section 3407(d)(2)(A)]	\$21.82
P.L. 106-377 Assessment (Trinity Public Utilities District) ² [Appendix B, Section 203]	\$0.12

EXPLANATORY NOTES

- Restoration Fund surcharges under P.L. 102-575 are determined on a fiscal year basis (10/1-9/30).
- The Trinity Public Utilities District Assessment is applicable to each acre-foot of water delivered from 3/1 to 2/28 and is adjusted annually.

Recent Historic Use, as defined in the CVP M&I Water Shortage Policy, is 0 acre-feet.

Additional details of the rate components are available on the Internet at
www.usbr.gov/mp/cvpwaterrates/ratebooks.

