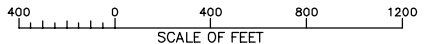




NOTES

Downstream cofferdam not shown. Downstream Cofferdam with crest elevation 578 will be incorporated into downstream dam embankment.



⊕ ALWAYS THINK SAFETY

UNITED STATES
DEPARTMENT OF THE INTERIOR
BUREAU OF RECLAMATION
UPPER SAN JOAQUIN RIVER BASIN
STORAGE INVESTIGATION
CALIFORNIA

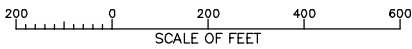
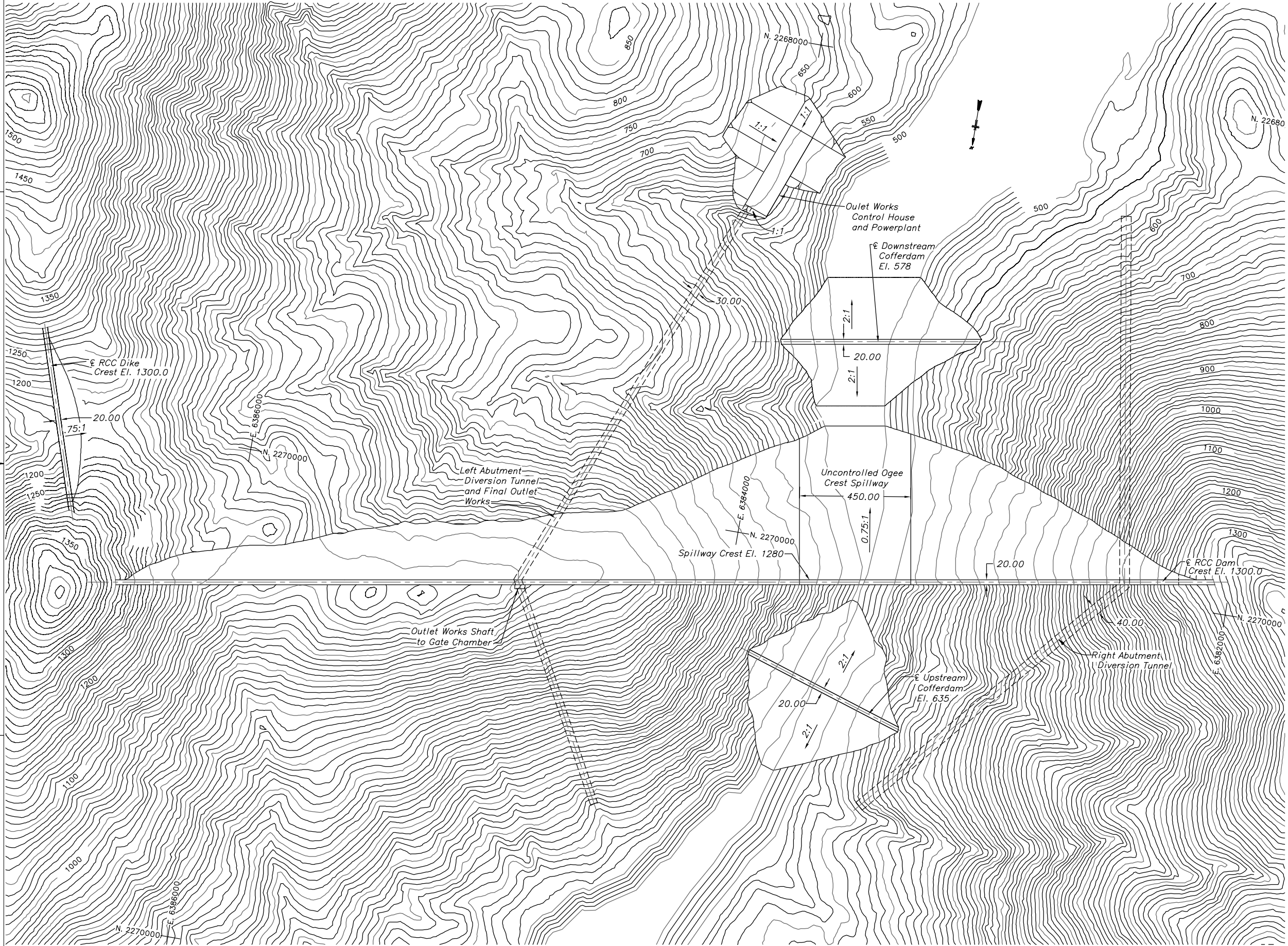
LAYOUT FOR DAM STRUCTURE
AND APPURTENANT FEATURES

MP 279 CFR DAM
CREST EL. 1300

CADD SYSTEM
AutoCAD
DENVER, COLORADO SEPTEMBER 10, 2003

CADD FILENAME
P1300.dwg

DATE AND TIME PLOTTED
SEPT. 10, 2003
PLOTTED BY
D.A. MARTINEZ



⊕ ALWAYS THINK SAFETY

UNITED STATES
DEPARTMENT OF THE INTERIOR
BUREAU OF RECLAMATION
UPPER SAN JOAQUIN RIVER BASIN
STORAGE INVESTIGATION
CALIFORNIA

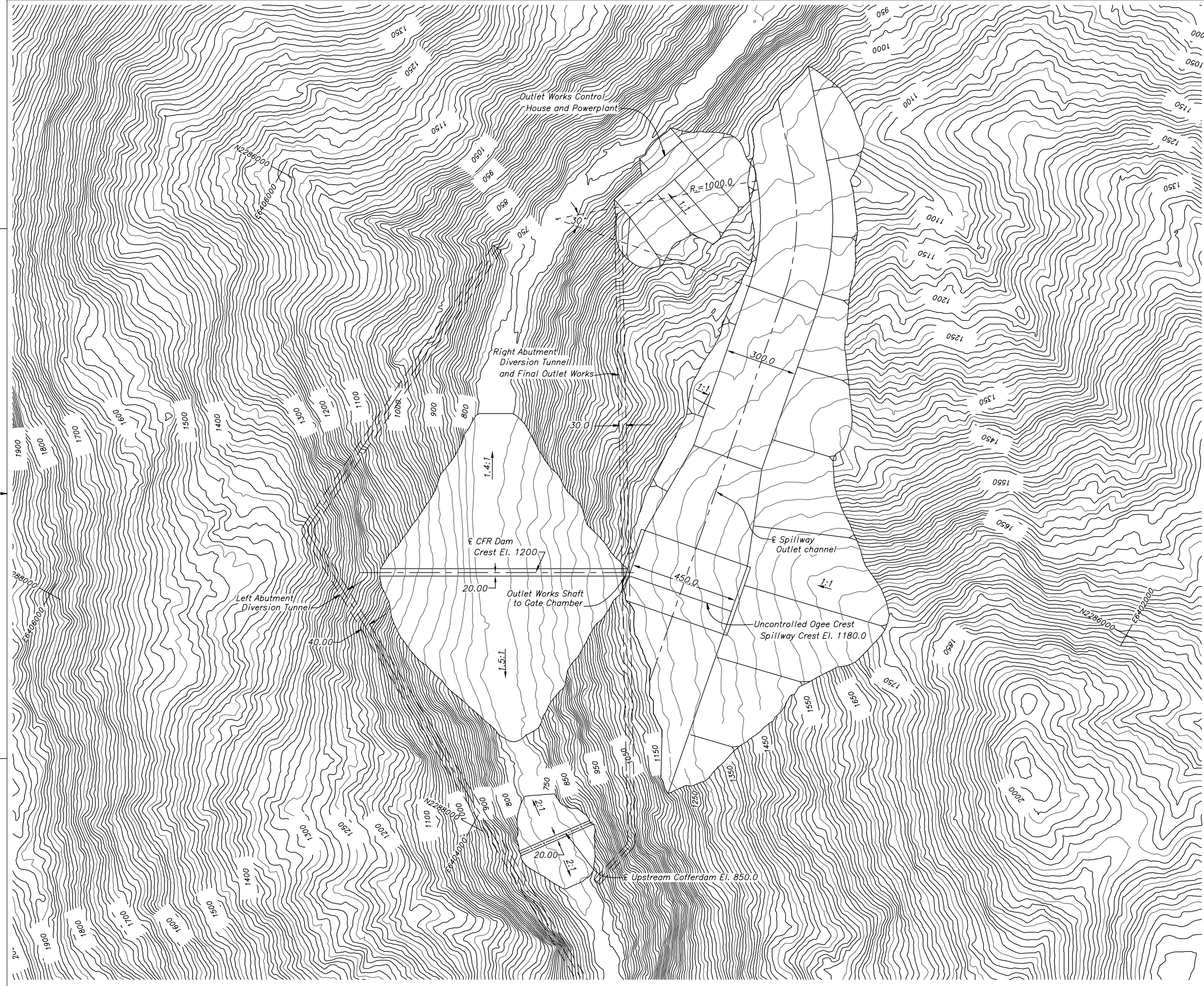
LAYOUT FOR DAM STRUCTURE
AND APPURTENANT FEATURES

MP 279 RCC DAM
CREST EL. 1300

CADD SYSTEM
Autocad
DENVER, COLORADO

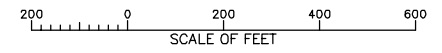
CADD FILENAME
CONC_P1300.DWG
SEPTEMBER 10, 2003

DATE AND TIME PLOTTED
SEPT. 10 2003
PLOTTED BY
D.A. MARTINEZ



NOTES

Downstream cofferdam not shown. Downstream Cofferdam with crest elevation 770 will be incorporated into downstream dam embankment.



⊕ ALWAYS THINK SAFETY

UNITED STATES
DEPARTMENT OF THE INTERIOR
BUREAU OF RECLAMATION
UPPER SAN JOAQUIN RIVER BASIN
STORAGE INVESTIGATION
CALIFORNIA

LAYOUT FOR DAM STRUCTURE
AND APPURTENANT FEATURES

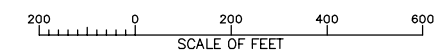
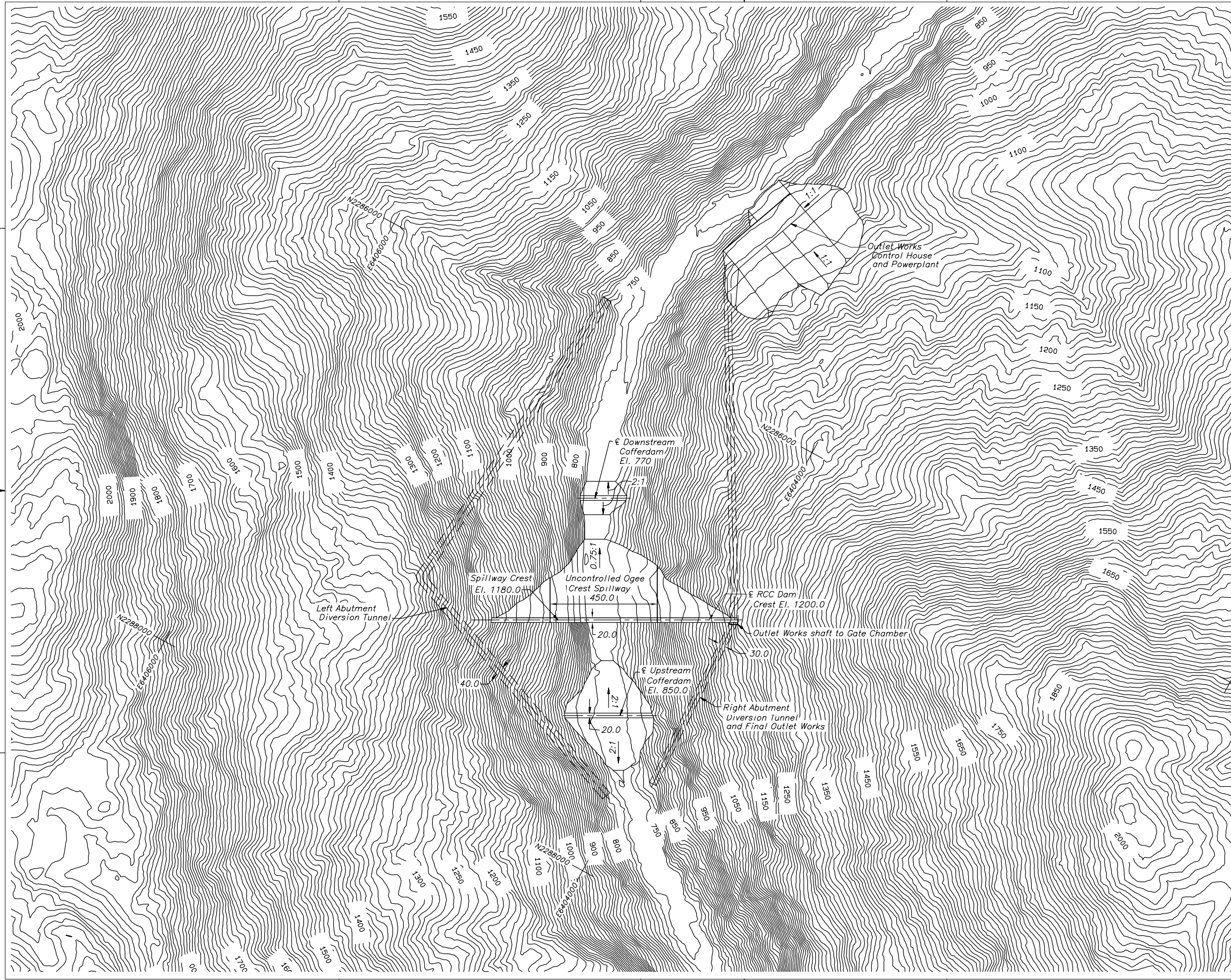
MP 286 CFR DAM
CREST EL. 1200

CADD SYSTEM
AUGISCAD
DENVER, COLORADO

CADD FILENAME
M1200.WRT.SPILLWAY.B.5_03.DWG
SEPTEMBER 10, 2003

DATE AND TIME PLOTTED
SEPT. 10, 2003
PLOTTED BY
D.A. MARTINEZ

DATE AND TIME PLOTTED
SEPT 10, 2003
PLOTTED BY
D.A. MARTINEZ



⊕ ALWAYS THINK SAFETY

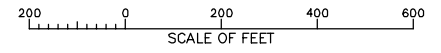
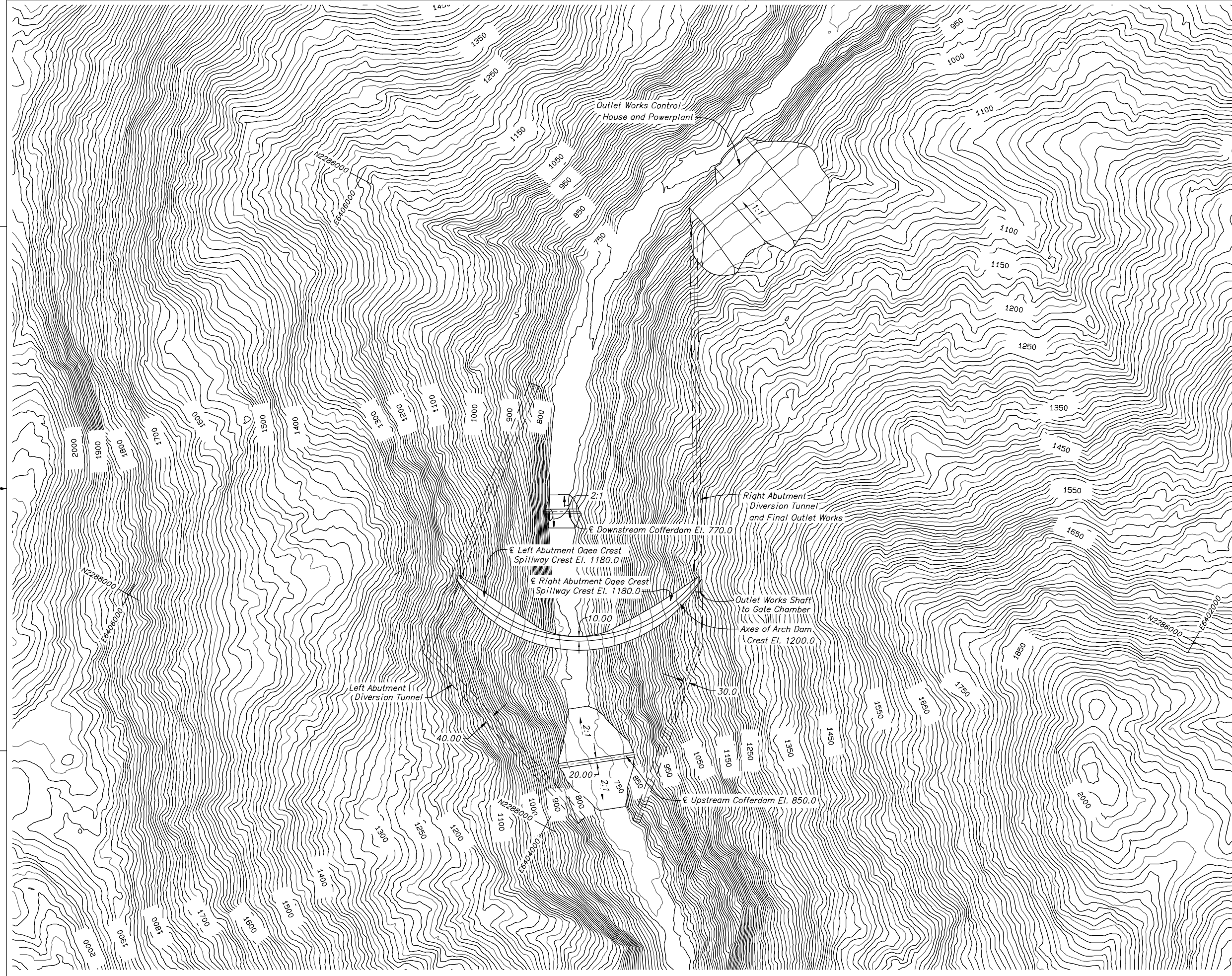
UNITED STATES
DEPARTMENT OF THE INTERIOR
BUREAU OF RECLAMATION
UPPER SAN JOAQUIN RIVER BASIN
STORAGE INVESTIGATION
CALIFORNIA

LAYOUT FOR DAM STRUCTURE
AND APPURTENANT FEATURES

MP 286 RCC DAM
CREST EL. 1200

CADD SYSTEM
Autocad
DENVER, COLORADO

CADD FILENAME
MRCC1200
SEPT 10, 2003



⊕ ALWAYS THINK SAFETY

UNITED STATES
DEPARTMENT OF THE INTERIOR
BUREAU OF RECLAMATION
UPPER SAN JOAQUIN RIVER BASIN
STORAGE INVESTIGATION
CALIFORNIA

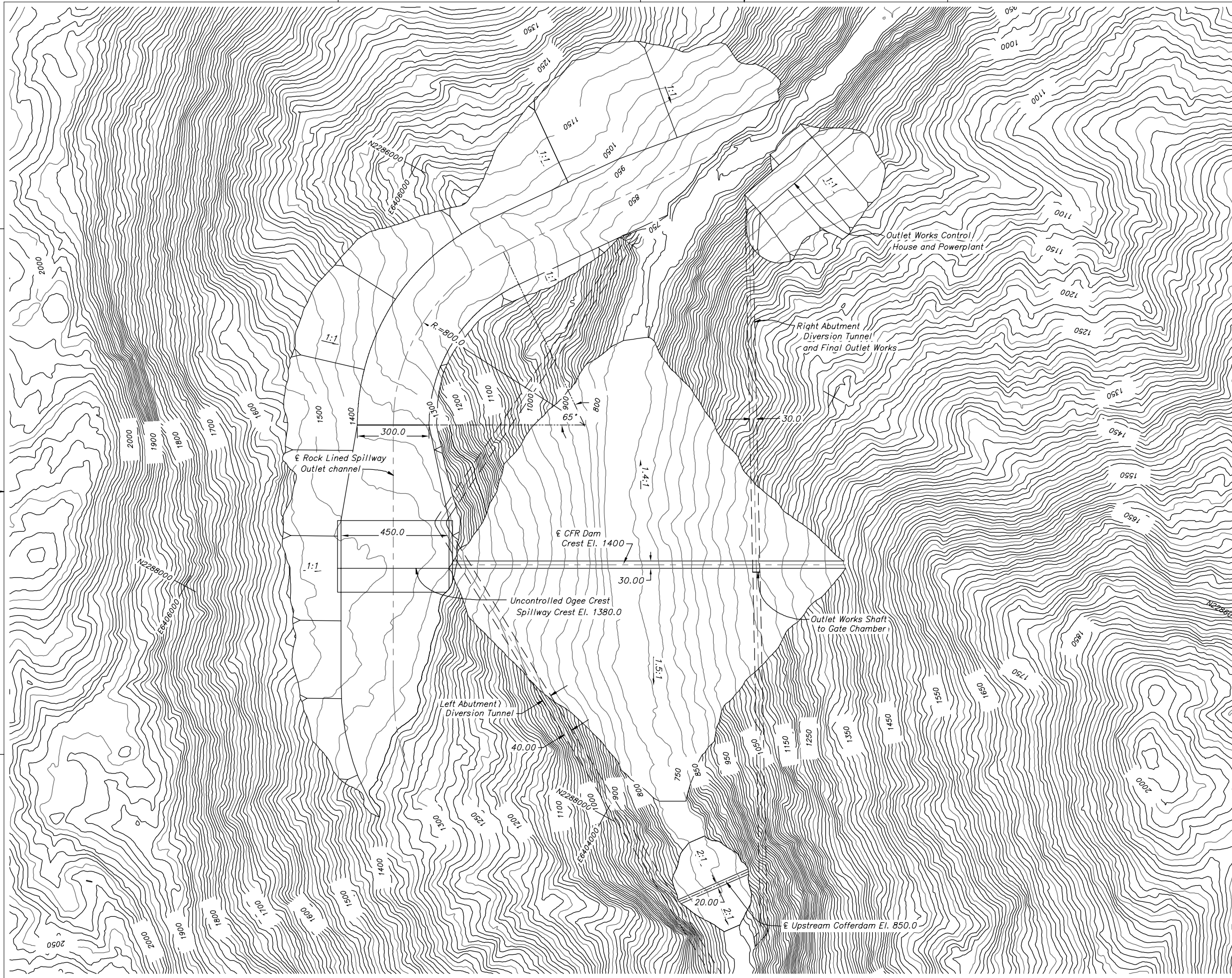
LAYOUT FOR DAM STRUCTURE
AND APPURTENANT FEATURES

MP 286 ARCH DAM
CREST EL. 1200

CADD SYSTEM
Autocad
DENVER, COLORADO SEPTEMBER 10, 2003

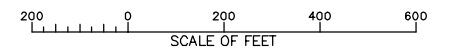
CADD FILENAME
M1200 ARCH.dwg

DATE AND TIME PLOTTED
SEPT. 10, 2003
PLOTTED BY
D.A. MARTINEZ



NOTES

Downstream cofferdam not shown. Downstream Cofferdam with crest elevation 770 will be incorporated into downstream dam embankment.



ALWAYS THINK SAFETY

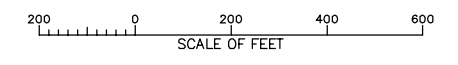
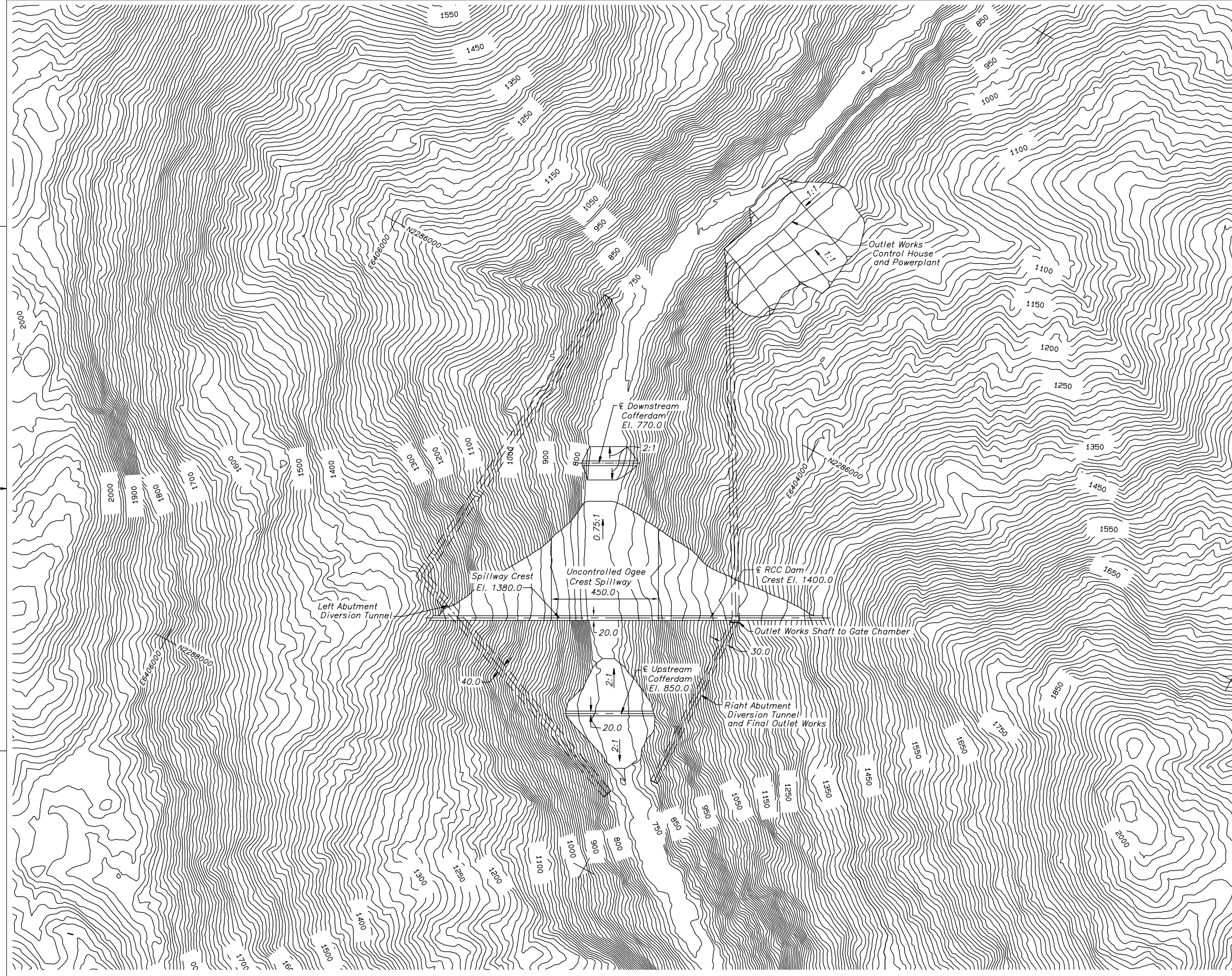
UNITED STATES
DEPARTMENT OF THE INTERIOR
BUREAU OF RECLAMATION
UPPER SAN JOAQUIN RIVER BASIN
STORAGE INVESTIGATION
CALIFORNIA

LAYOUT FOR DAM STRUCTURE
AND APPURTENANT FEATURES

MP 286 CFR DAM
CREST EL. 1400

CADD SYSTEM
AUSCAD
DENVER, COLORADO

CADD FILENAME
M1400 2.DWG
SEPTEMBER 10, 2003



⊕ ALWAYS THINK SAFETY

UNITED STATES
DEPARTMENT OF THE INTERIOR
BUREAU OF RECLAMATION
UPPER SAN JOAQUIN RIVER BASIN
STORAGE INVESTIGATION
CALIFORNIA

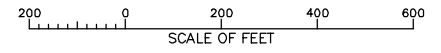
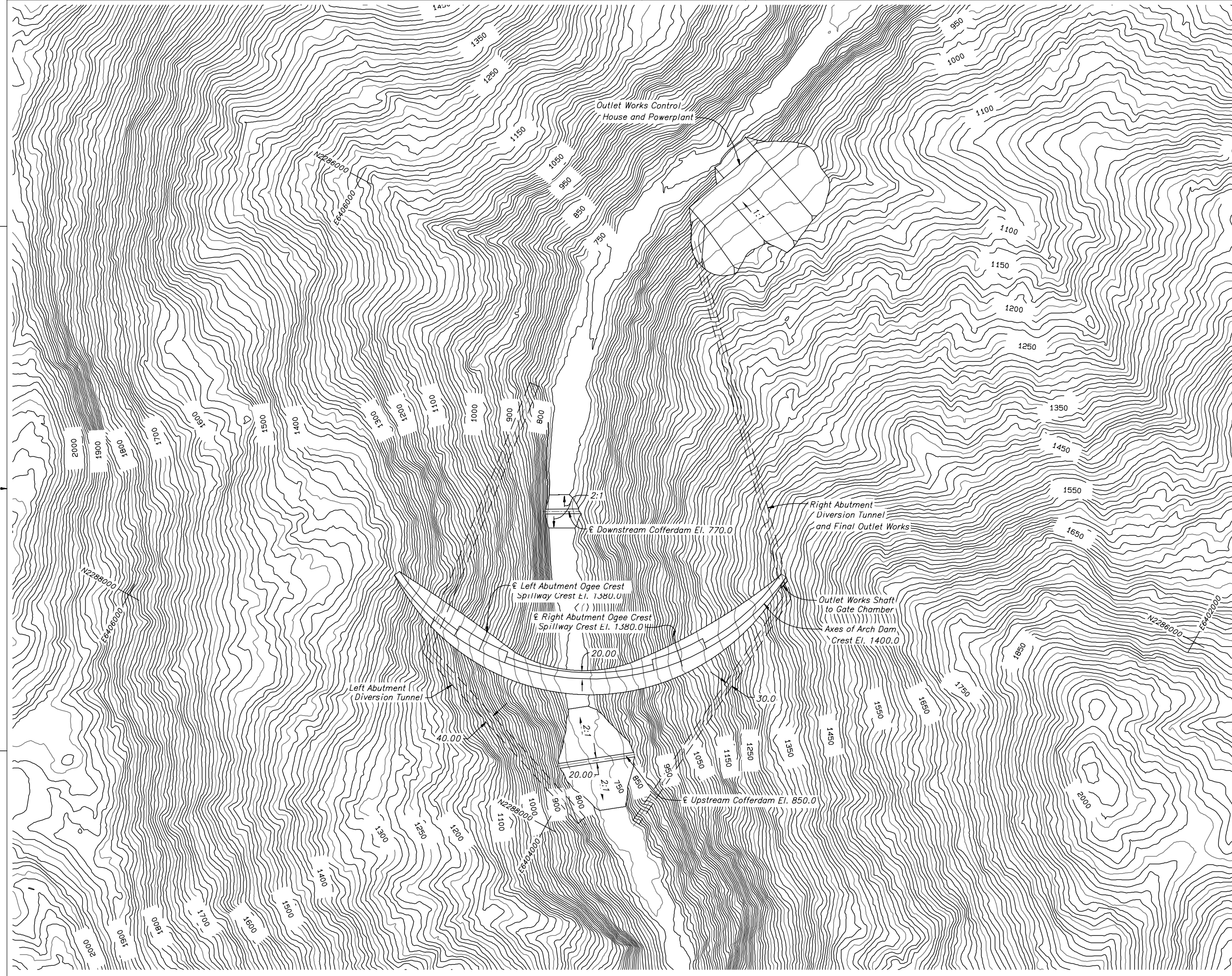
LAYOUT FOR DAM STRUCTURE
AND APPURTENANT FEATURES

MP 286 RCC DAM
CREST EL. 1400

CADD SYSTEM
Autocad
DENVER, COLORADO SEPTEMBER 10, 2003

CADD FILENAME
MRCC1400.2

DATE AND TIME PLOTTED
SEPT. 10, 2003
PLOTTED BY
D.A. MARTINEZ



⊕ ALWAYS THINK SAFETY

UNITED STATES
DEPARTMENT OF THE INTERIOR
BUREAU OF RECLAMATION
UPPER SAN JOAQUIN RIVER BASIN
STORAGE INVESTIGATION
CALIFORNIA

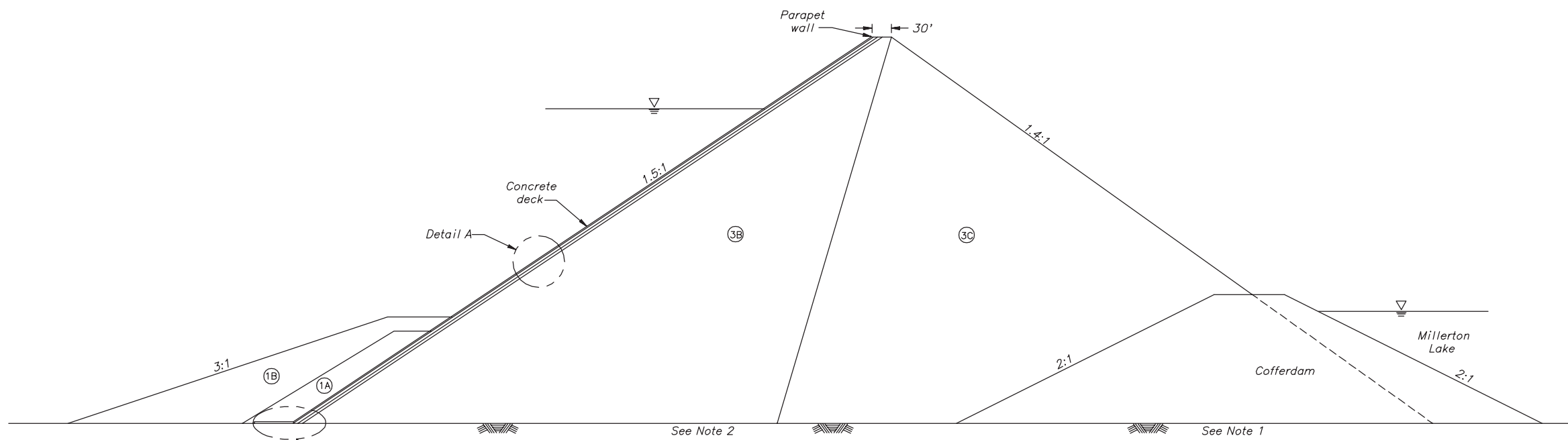
LAYOUT FOR DAM STRUCTURE
AND APPURTENANT FEATURES

MP 286 ARCH DAM
CREST EL. 1400

CADD SYSTEM
AUGISCAD
DENVER, COLORADO

CADD FILENAME
M1400 ARCH.dwg
SEPTEMBER 10, 2003

DATE AND TIME PLOTTED
SEPT. 10, 2003
PLOTTED BY
D.A. MARTINEZ



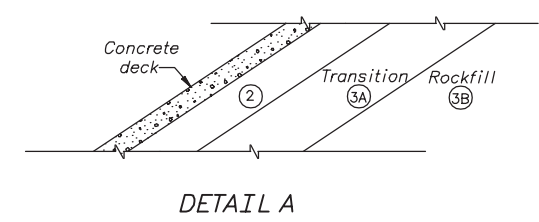
PROFILE

EMBANKMENT EXPLANATION

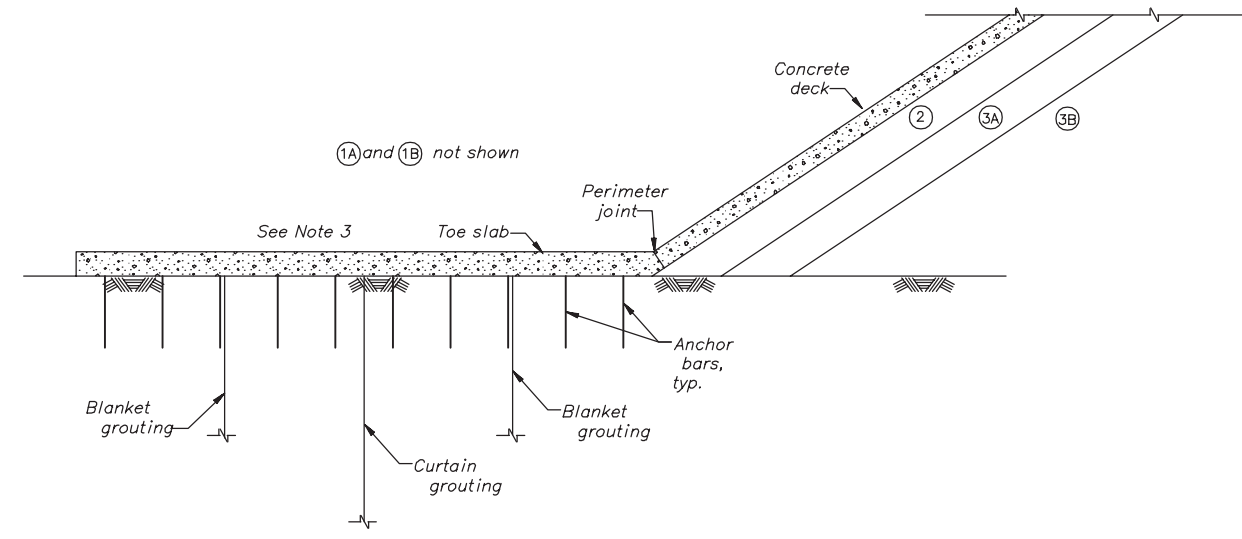
- ①A Clay, silt, sand, and gravel with a maximum particle size of 3-inches (> 12% fines) from borrow compacted to 6-inch layers
- ①B Gravel and cobbles with a maximum particle size of 12-inches from required excavation and borrow compacted to 18-inch layers.
- ② Silty gravel with sand processed from borrow compacted to 18-inch layers.
- ③A Gravel processed from borrow compacted to 18-inch layers.
- ③B Rock fill with a maximum particle size of 18-inch compacted to 36 inch layers.
- ③C Rock fill with a maximum particle size of 36-inches compacted to 48-inch layers.

NOTES


1. Cofferdam foundation conditions assumed to be coarse gravel, cobbles and boulders.
2. Foundation for shells assumed to be competent rock cleaned by standard construction equipment.
3. Foundation for toe slab assumed to be competent rock cleaned by hand and surface treated.



DETAIL A

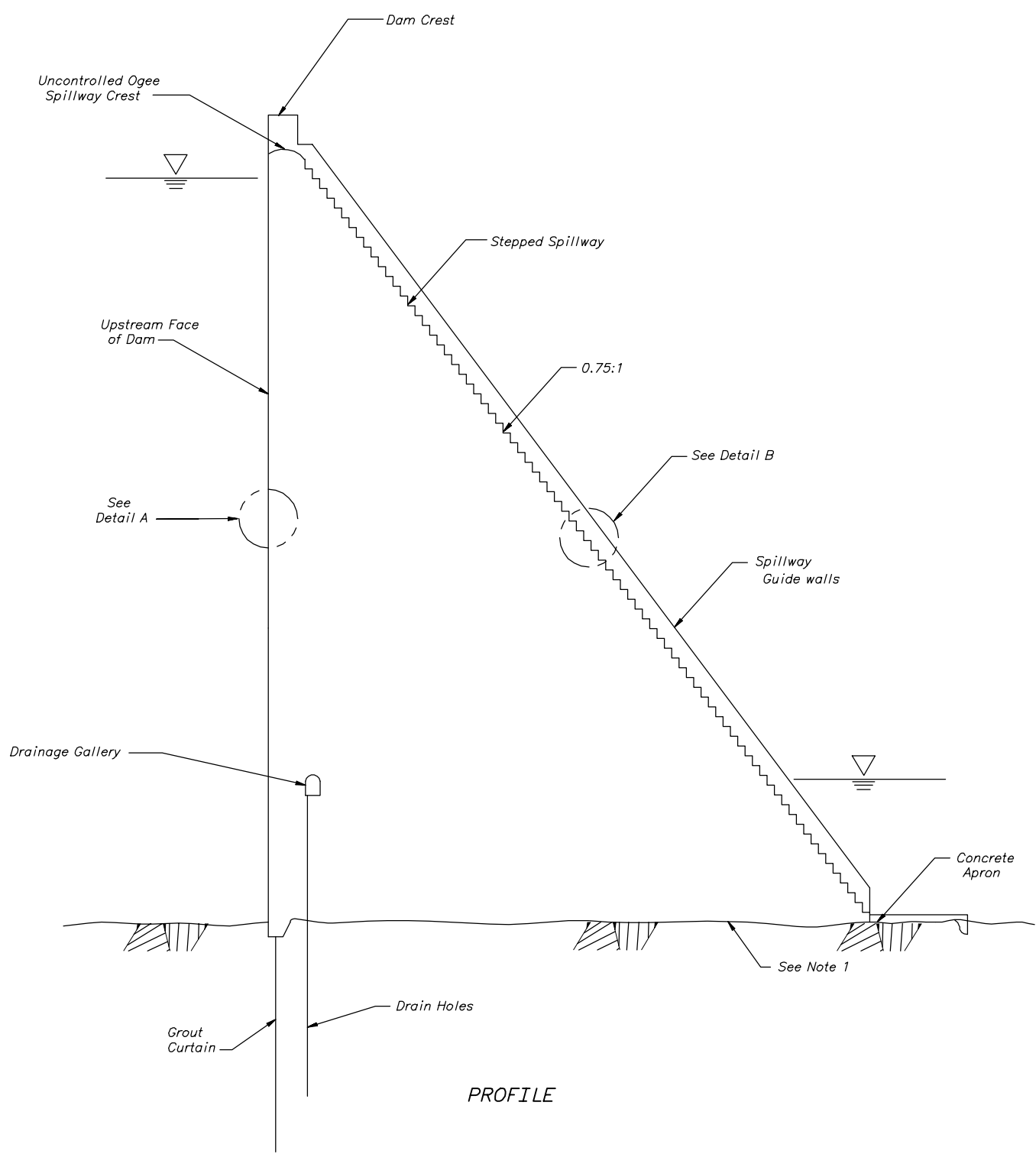


DETAIL B

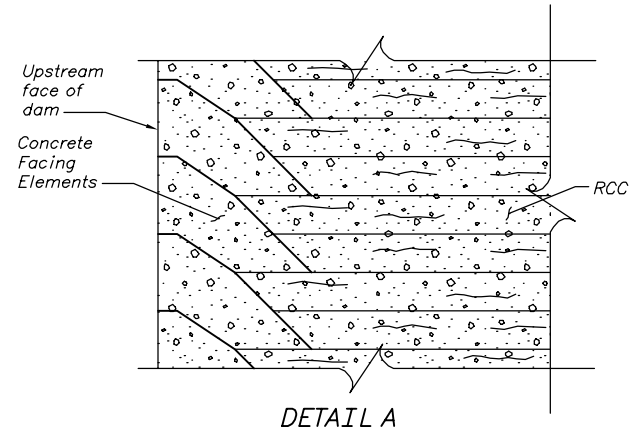
 ALWAYS THINK SAFETY
 UNITED STATES
 DEPARTMENT OF THE INTERIOR
 BUREAU OF RECLAMATION
 UPPER SAN JOAQUIN PROJECT
 CALIFORNIA
UPPER SAN JOAQUIN STORAGE INVESTIGATION

**CONCRETE FACED ROCKFILL DAM
 SECTION PROFILE**
CADD SYSTEM: AutoCAD Rev. 15.06; CADD FILENAME: FIGURE2.DWG; DATE: SEPTEMBER 30, 2002 11:02; PLOTTED BY: JMW/TFLE; DENVER, COLORADO; SHEET 2 OF 2; AUGUST 13, 2002

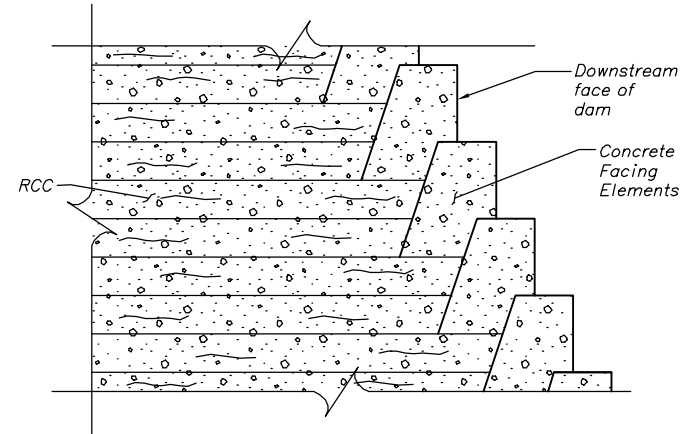
DATE AND TIME PLOTTED: SEPTEMBER 30, 2002 11:02 PLOTTED BY: JMW/TFLE



PROFILE



DETAIL A




DETAIL B

NOTES

1. Foundation for RCC gravity dam to be excavated to competent rock.

FILE PATH: H:\CASSO Share\Drawing Files\Upper San Joaquin\ PLOTTED BY: EPIEMBER 30, 2002 10:58

 ALWAYS THINK SAFETY	
<small>UNITED STATES DEPARTMENT OF THE INTERIOR BUREAU OF RECLAMATION UPPER SAN JOAQUIN PROJECT CALIFORNIA</small>	
UPPER SAN JOAQUIN STORAGE INVESTIGATION	
ROLLER COMPACTED CONCRETE DAM SECTION PROFILE	
<small>CADD SYSTEM Autocad Rev. 15.06 DENVER, COLORADO</small>	<small>CADD FILENAME FTGURE1.DWG AUGUST 13, 2002</small>

5

4

3

2

1

D

C

B

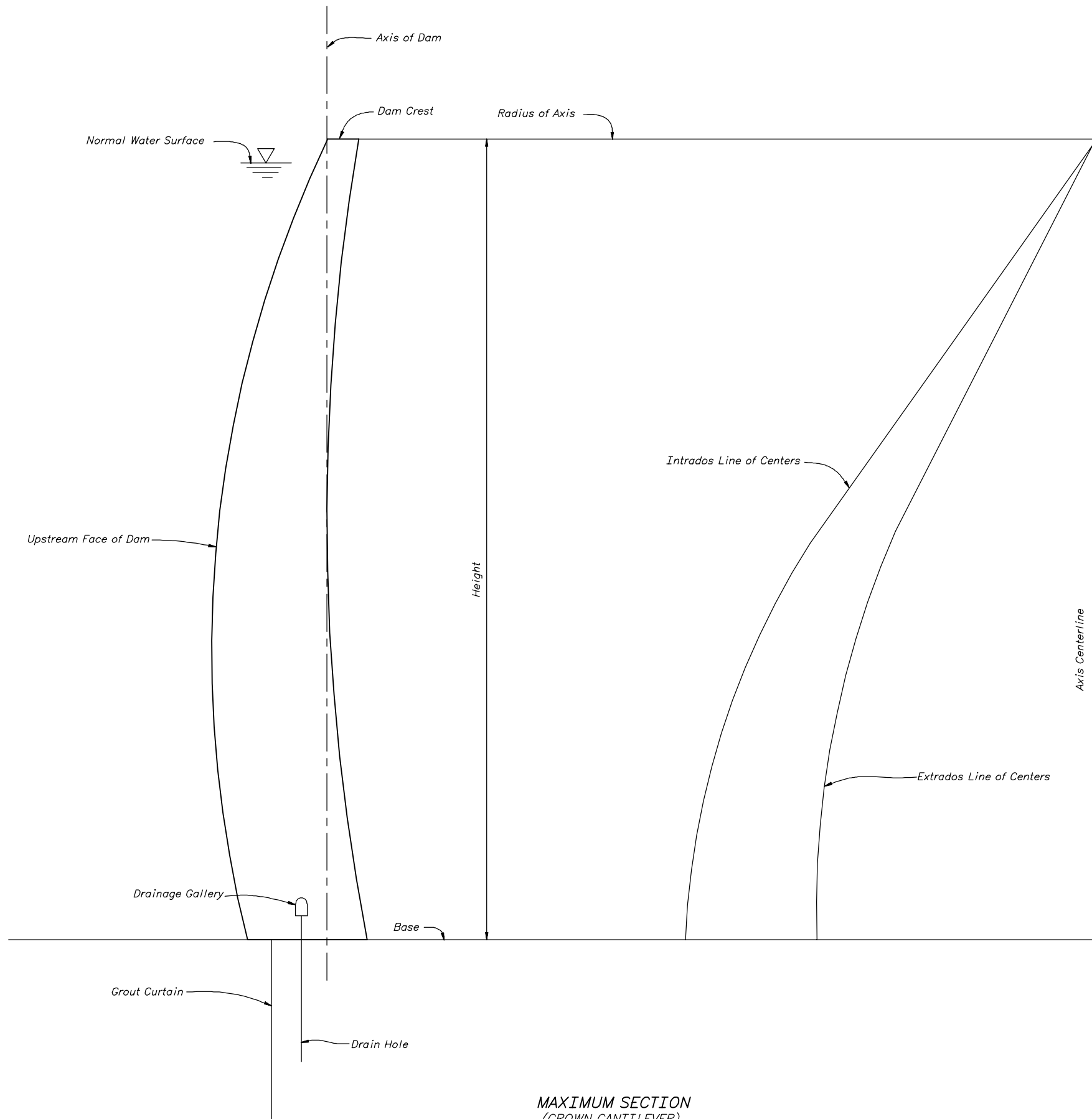
A

D


C

B

A



NOTE
 1. Foundation for Arch dam to be excavated to competent rock.

 ALWAYS THINK SAFETY	
<small>UNITED STATES DEPARTMENT OF THE INTERIOR BUREAU OF RECLAMATION</small>	
<small>UPPER SAN JOAQUIN PROJECT CALIFORNIA UPPER SAN JOAQUIN STORAGE INVESTIGATION</small>	
CONCRETE ARCH DAM SECTION PROFILE	
<small>CADD SYSTEM AutoCAD Rev. 2002 DENVER, COLORADO</small>	<small>CADD FILENAME ROLLER COMP CONC DAM.DWG SEPTEMBER 10, 2003</small>

DATE AND TIME PLOTTED
 SEPTEMBER 10, 2003
 PLOTTED BY
 D.A. MARTINEZ

5

4

3

2

1

MAXIMUM SECTION
 (CROWN CANTILEVER)