

ALWAYS THINK SAFETY

UNITED STATES DEPARTMENT OF THE INTERIOR
BUREAU OF RECLAMATION
UPPER SAN JOAQUIN RIVER BASIN
DIVISION OF INVESTIGATION
CALIFORNIA

LAYOUT FOR DAM STRUCTURE
AND APPURTENANT FEATURES

RM 286 ARCH DAM
CREST EL. 1300

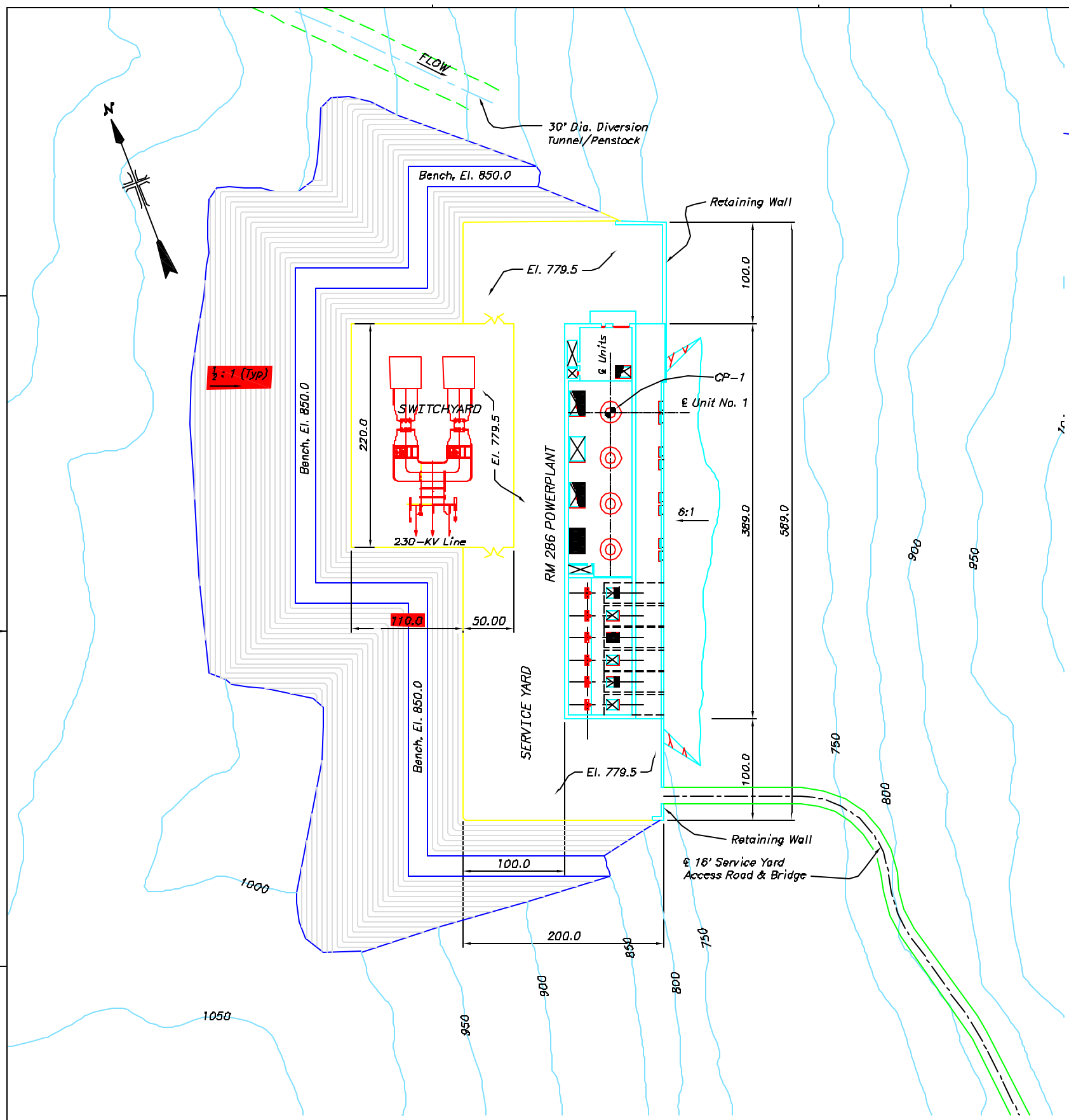
CADD SYSTEM: AutoCAD
DENVER, COLORADO

CADD FILENAME: M1300_ARCH.dwg
MAY 30, 2004

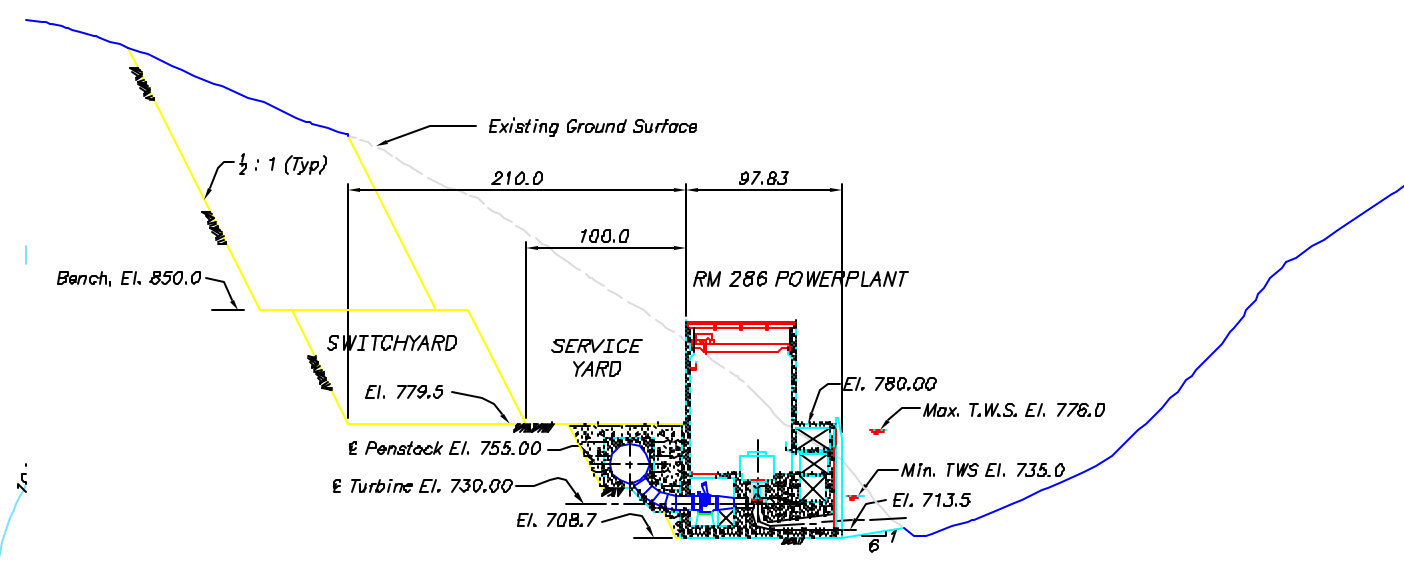
NOT FOR CONSTRUCTION

DATE AND TIME PLOTTED
MAY 30, 2004
PLOTTED BY
D.A. MARTINEZ

D
C
B
A



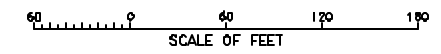
PLAN - SERVICE YARD



TRANSVERSE SECTION THRU UNIT 1

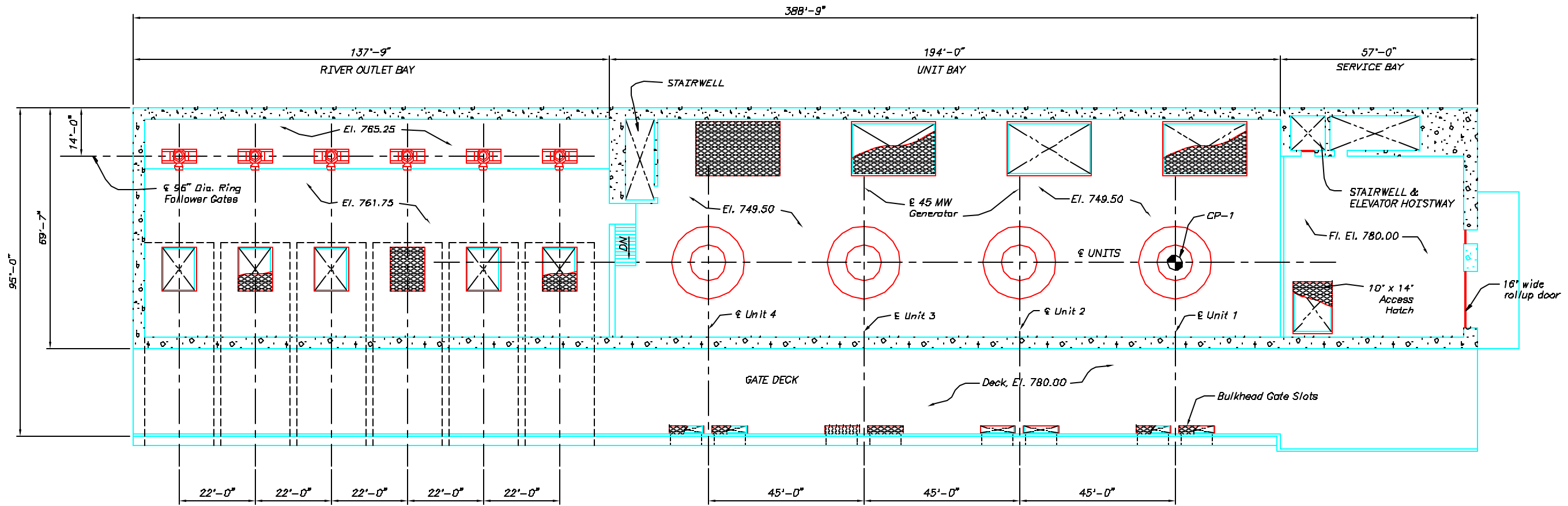
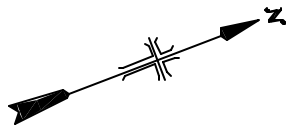
NOTES

1. Coordinates for control point CP-1 are for the centerline of Unit No. 1.
N 2,285,225.18
E 6,404,648.19
2. Bearing for centerline units is N 21° 00' 00"



ALWAYS THINK SAFETY	
<small>UNITED STATES DEPARTMENT OF THE INTERIOR BUREAU OF REclamation UPPER SAN JOAQUIN RIVER BASIN STORAGE INVESTIGATION CALIFORNIA</small>	
SITE LAYOUT FOR RM 286 POWERPLANT PLAN & SECTION	
RM 286 ARCH DAM CREST EL. 1300	
<small>CADD SYSTEM AutoCAD PLOT, 18.0 DENVER, COLORADO</small>	<small>CADD FILENAME JULY 23, 2004</small>

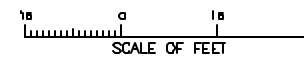
NOT FOR CONSTRUCTION



PLAN - EL. 761.75 AND 780.00

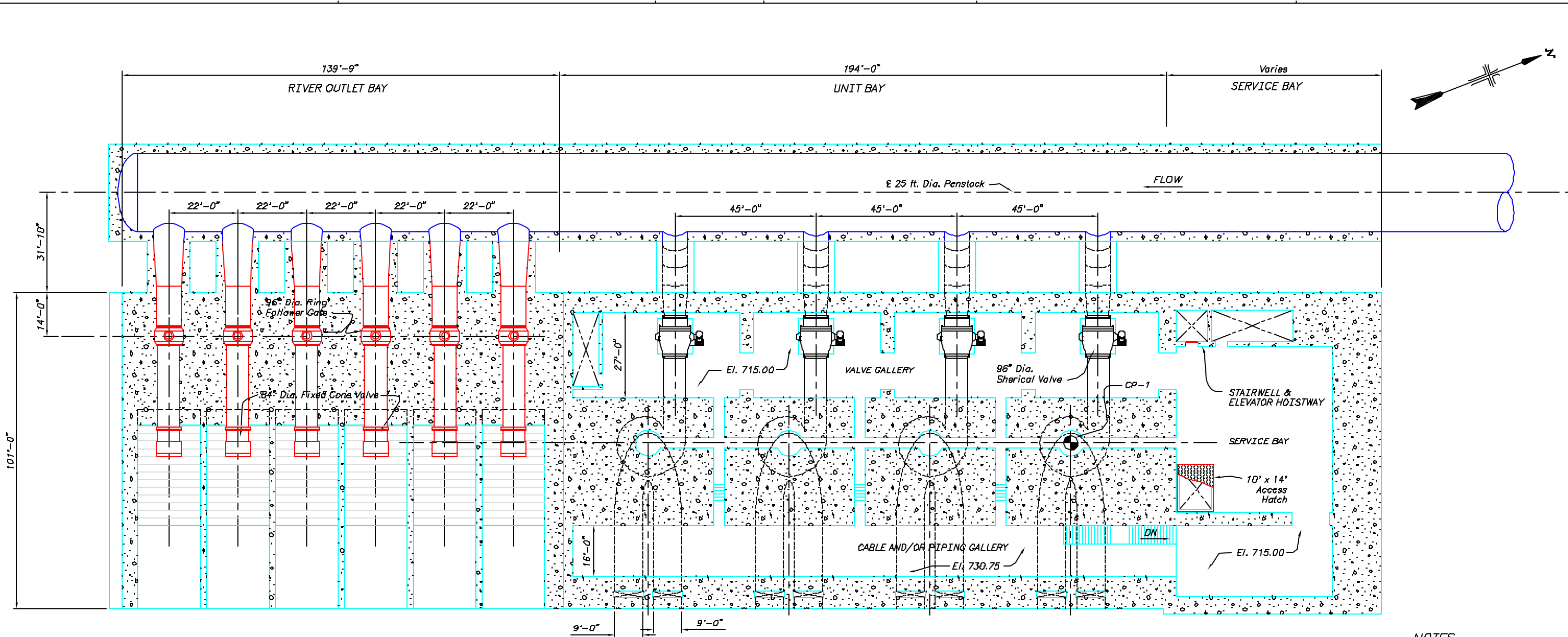
NOTES

- Coordinates for control point CP-1 are for the centerline of Unit No. 1.
 N 2,285,225.18
 E 6,404,648.19
- Bearing for centerline units is N 21° 00' 00" E



ALWAYS THINK SAFETY <small>UNIFIED SCALE</small> <small>DEPARTMENT OF THE INTERIOR</small> <small>BUREAU OF RECLAMATION</small> <small>UPPER SAN JOAQUIN RIVER BASIN</small> <small>STORAGE INVESTIGATION</small> <small>CALIFORNIA</small>	
GENERAL ARRANGEMENT FOR RM 286 POWERPLANT PLAN - EL. 780.00 & 761.75	
RM 286 ARCH DAM CREST EL. 1300	
<small>PROJECT SYSTEM</small> <small>2000/06/26/08:00</small>	<small>6400 FILENAME</small> <small>DATE</small>

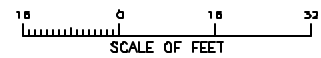
NOT FOR CONSTRUCTION



PLAN - EL. 715.00 AND 730.75

NOTES

- Coordinates for control point CP-1 are for the centerline of Unit No. 1.
 N 2,285,225.18
 E 6,404,648.19
- Bearing for centerline units is N 21° 00' 00" E

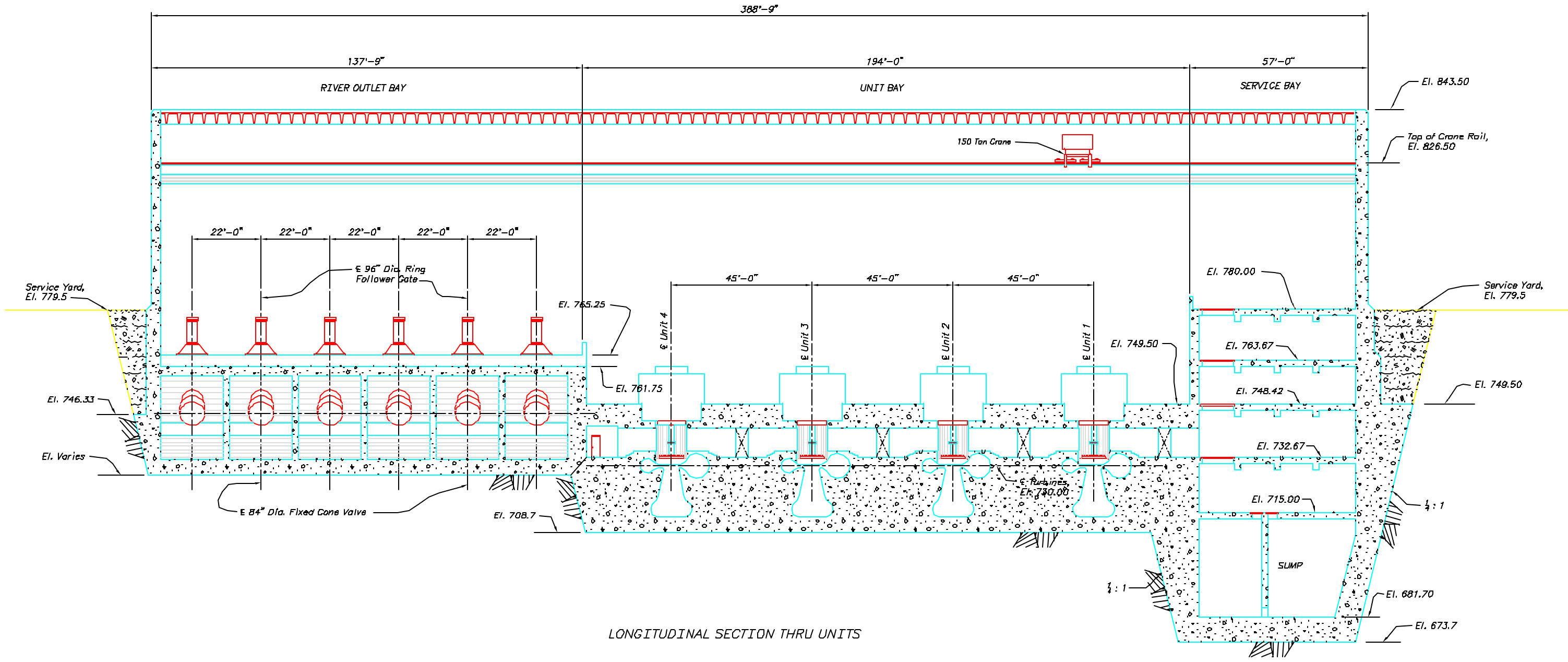


ALWAYS THINK SAFETY	
<small>UNITED STATES DEPARTMENT OF THE INTERIOR BUREAU OF RECLAMATION UPPER SAN JOAQUIN RIVER BASIN STORAGE INVESTIGATION CALIFORNIA</small>	
GENERAL ARRANGEMENT FOR RM 286 POWERPLANT PLAN - EL. 730.75 & 715.00	
RM 286 ARCH DAM CREST EL. 1300	
CADD SYSTEM AutoCAD PLOT 18.0 DENVER, COLORADO	CADD FILENAME DATE

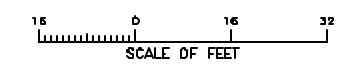
NOT FOR CONSTRUCTION

PLOTTED BY:

D
C
B
A



LONGITUDINAL SECTION THRU UNITS



NOT FOR CONSTRUCTION

ALWAYS THINK SAFETY	
UNITED STATES DEPARTMENT OF THE INTERIOR BUREAU OF RECLAMATION UPPER SAN JOAQUIN RIVER BASIN STORAGE INVESTIGATION CALIFORNIA	
GENERAL ARRANGEMENT FOR RM 286 POWERPLANT LONGITUDINAL SECTION THRU UNITS	
RM 286 ARCH DAM CREST EL. 1300	
CADD SYSTEM AutoCAD Rev. 16.0	CADD FILENAME
FIGURE 6	

PLOTTED BY: