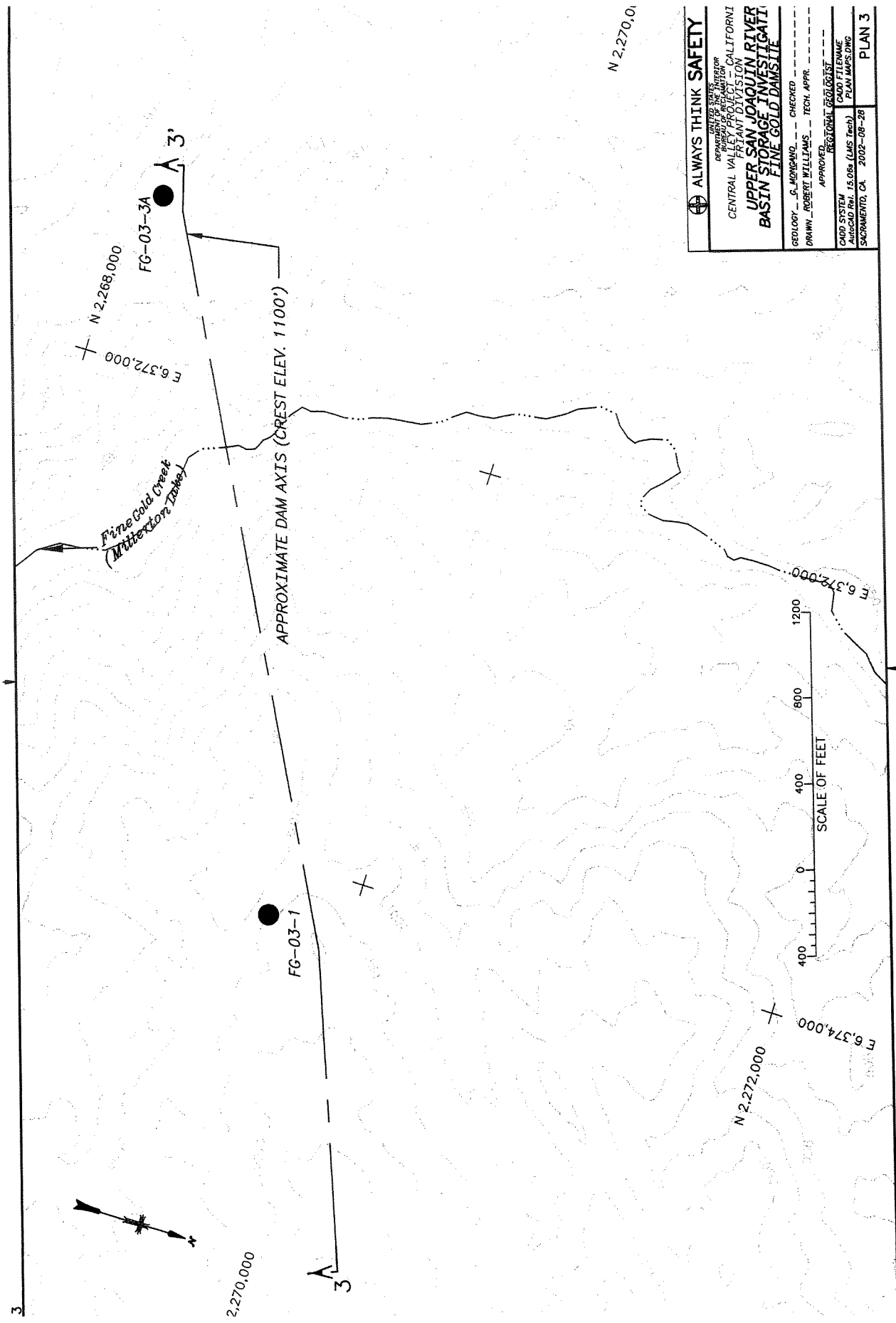


ALWAYS THINK SAFETY

UNITED STATES  
 GEOLOGICAL SURVEY  
 GEORGE WELLS FISHER, - CHIEF  
 UPPER SAN JOAQUIN RIVER  
 BASIN STORAGE INVESTIGATION  
 REGIONAL GEOLOGY  
 (Bretan and Buecco, 1962)

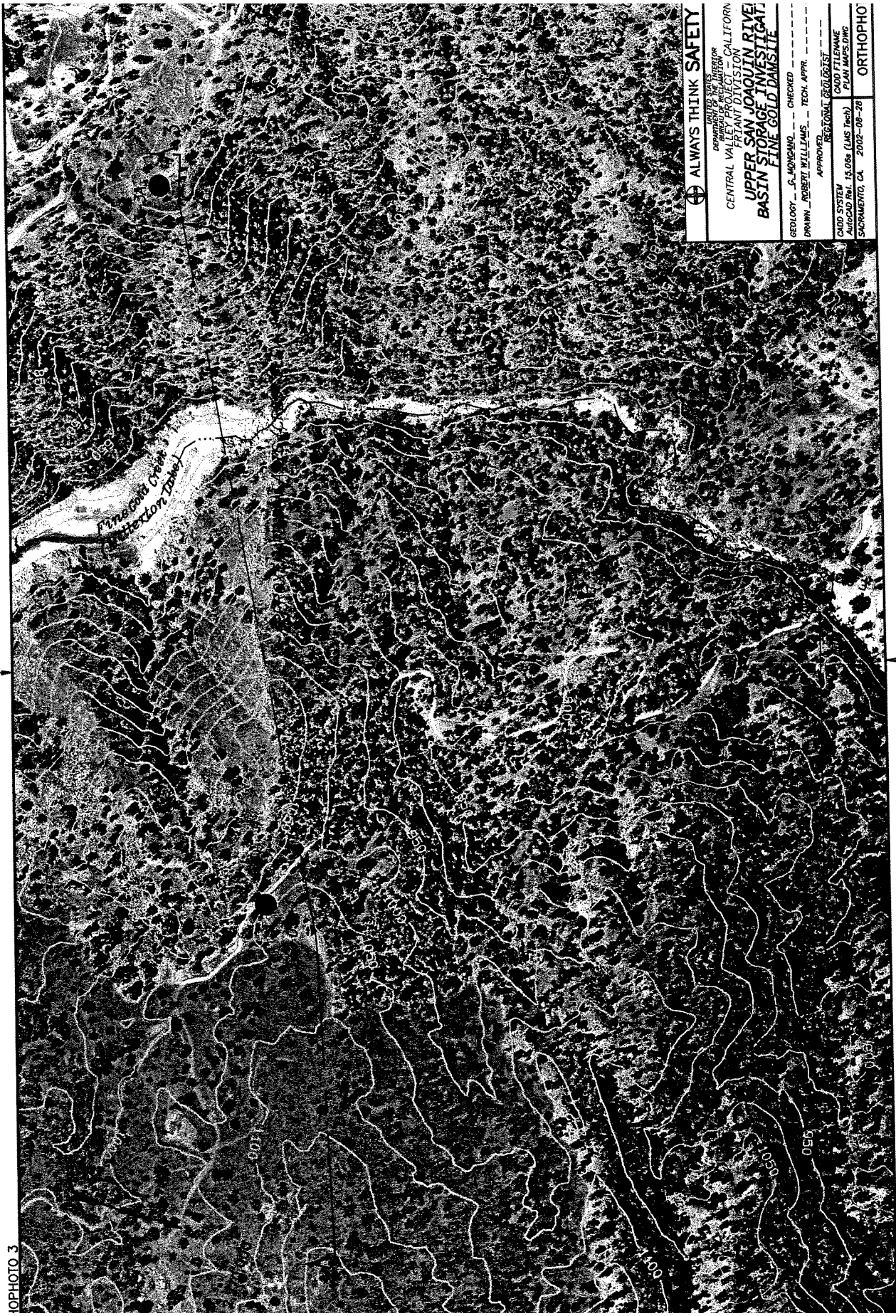
DESIGNED BY \_\_\_\_\_ CHECKED BY \_\_\_\_\_  
 DRAWN BY \_\_\_\_\_ REVISIONS \_\_\_\_\_  
 APPROVED BY \_\_\_\_\_  
 DATE OF APPROVAL \_\_\_\_\_  
 SCALE OF MAP \_\_\_\_\_  
 SHEET NO. \_\_\_\_\_ OF \_\_\_\_\_  
 PLATE 1



N 2,270,00

<b>ALWAYS THINK SAFETY</b>	
DEPARTMENT OF THE INTERIOR	
CENTRAL VALLEY PROJECT - CALIFORNIA	
FRONT DIVISION	
<b>UPPER SAN JOAQUIN RIVER</b>	
<b>BASIN STORAGE INVESTIGATIONAL</b>	
<b>FINE GOLD DAM SITE</b>	
GEOLOGY - S. HODGKINSON	CHECKED
DRAWN - ROBERT WILLIAMS	TECH. APPR.
APPROVED	
REGIONAL GEOLOGIST	
CADD SYSTEM	CADD FILENAME
AutoCAD Rel. 15.06a (LMS Tech)	PLAN MAPS.DWG
SACRAMENTO, CA. 2002-08-28	
PLAN 3	

10PHOTO 3



**⊕ ALWAYS THINK SAFETY**

UNIT OF THE DIRECTOR  
 DEPARTMENT OF WATER  
 CENTRAL VALLEY DISTRICT, CALIFORNIA  
 FERTILIZER DIVISION

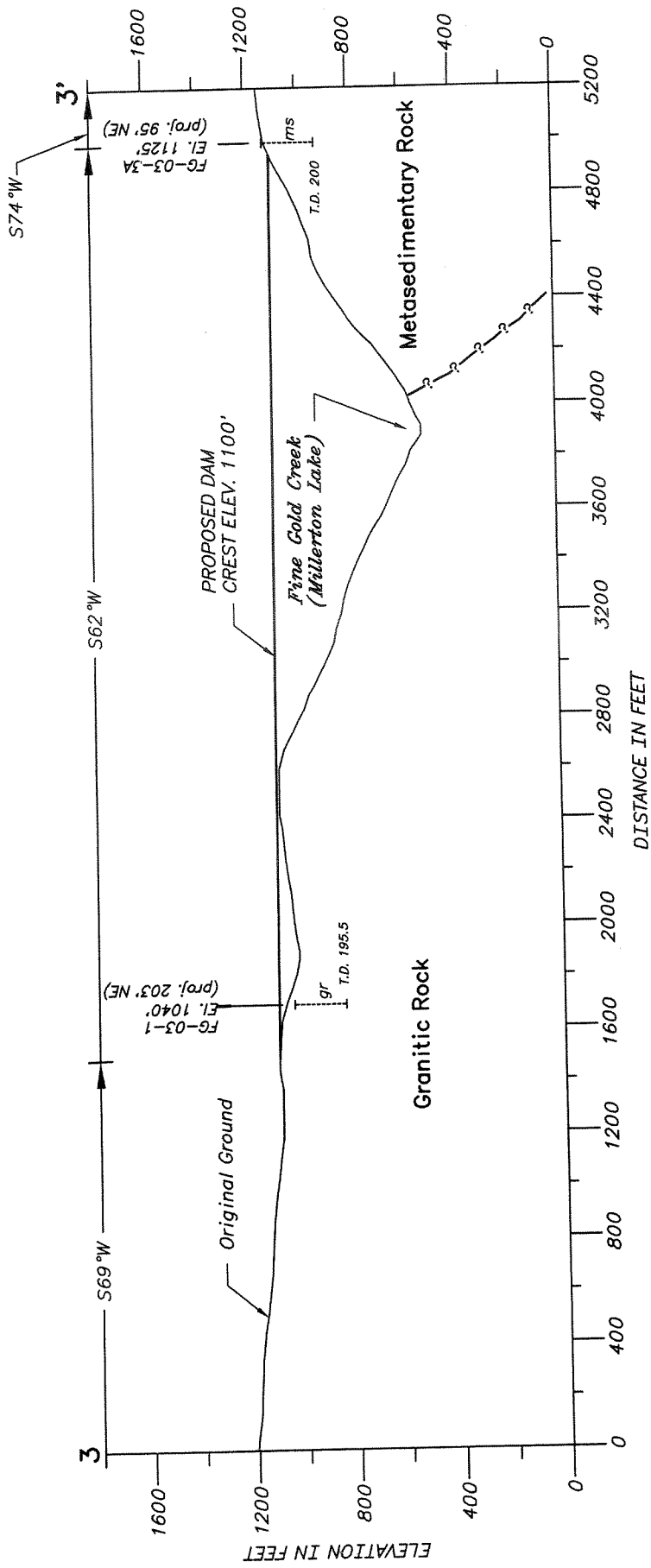
**UPPER SAN JOAQUIN RIVER  
 BASIN STORAGE INVESTIGATION  
 FINE GOLD DAMSITE**

GEOLOGY - G. MORGAN, -- CHECKED  
 DRAWN - ROBERT WILLIAMS, -- TECH. APPR. ---

APPROVED: REGIONAL GEOLOGIST

CADD SYSTEM	AutoCAD Rev. 15.068 (LMS Tech)
CADD FILENAME	PLAN.MSDWG
SACRAMENTO, CA	2002-08-28

**ORTHOPHO**



**ALWAYS THINK SAFETY**

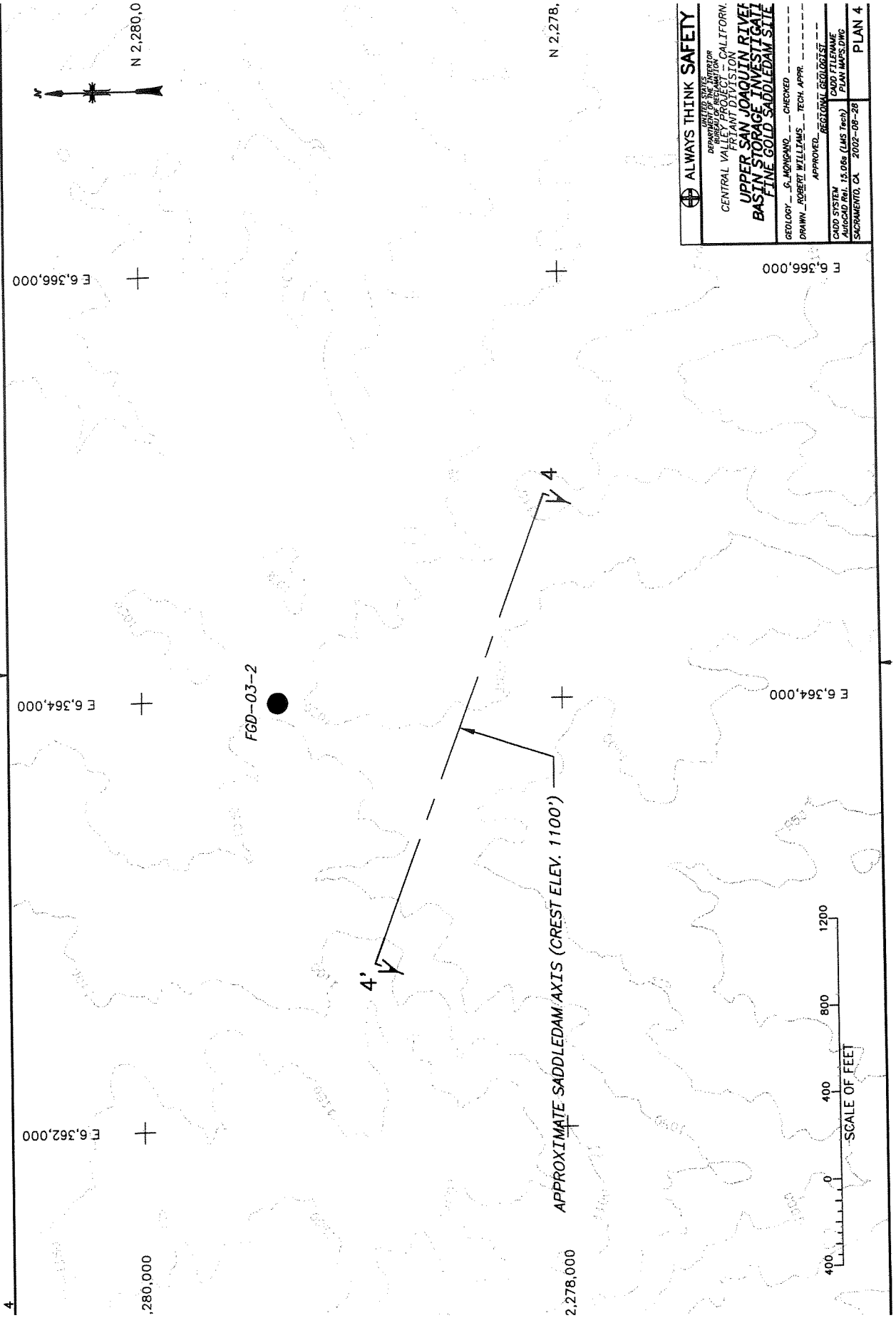
DEPARTMENT OF THE INTERIOR  
BUREAU OF RECLAMATION CALIFORNIA  
CENTRAL VALLEY DISTRICT  
PERMIT DIVISION

**UPPER SAN JOAQUIN RIVER  
BASIN STORAGE INVESTIGATION  
FINE GOLD DAMSITE SECTION 3**

GEOLOGY - J. MONROE - CHECKED  
DRAWN - ROBERT WILLIAMS - TECH. APPR.

APPROVED REGIONAL GEOLOGIST

CADD SYSTEM	SECTION
AUTOCAD Ver. 15.06a (LMS Tech)	CA00 FILENAME
SACRAMENTO, CA 2002-08-28	FINE GOLD SECTION



**ALWAYS THINK SAFETY**

UNIT OF STATE  
 DIRECTOR  
 DIVISION OF REVENUE AND TAXATION  
 CENTRAL VALLEY PROJECTS DIVISION  
 CALIFORNIA

**UPPER SAN JOAQUIN RIVER  
 BASIN STORAGE INVESTIGATIVE  
 FINE GOLD SADDLEDAM SITE**

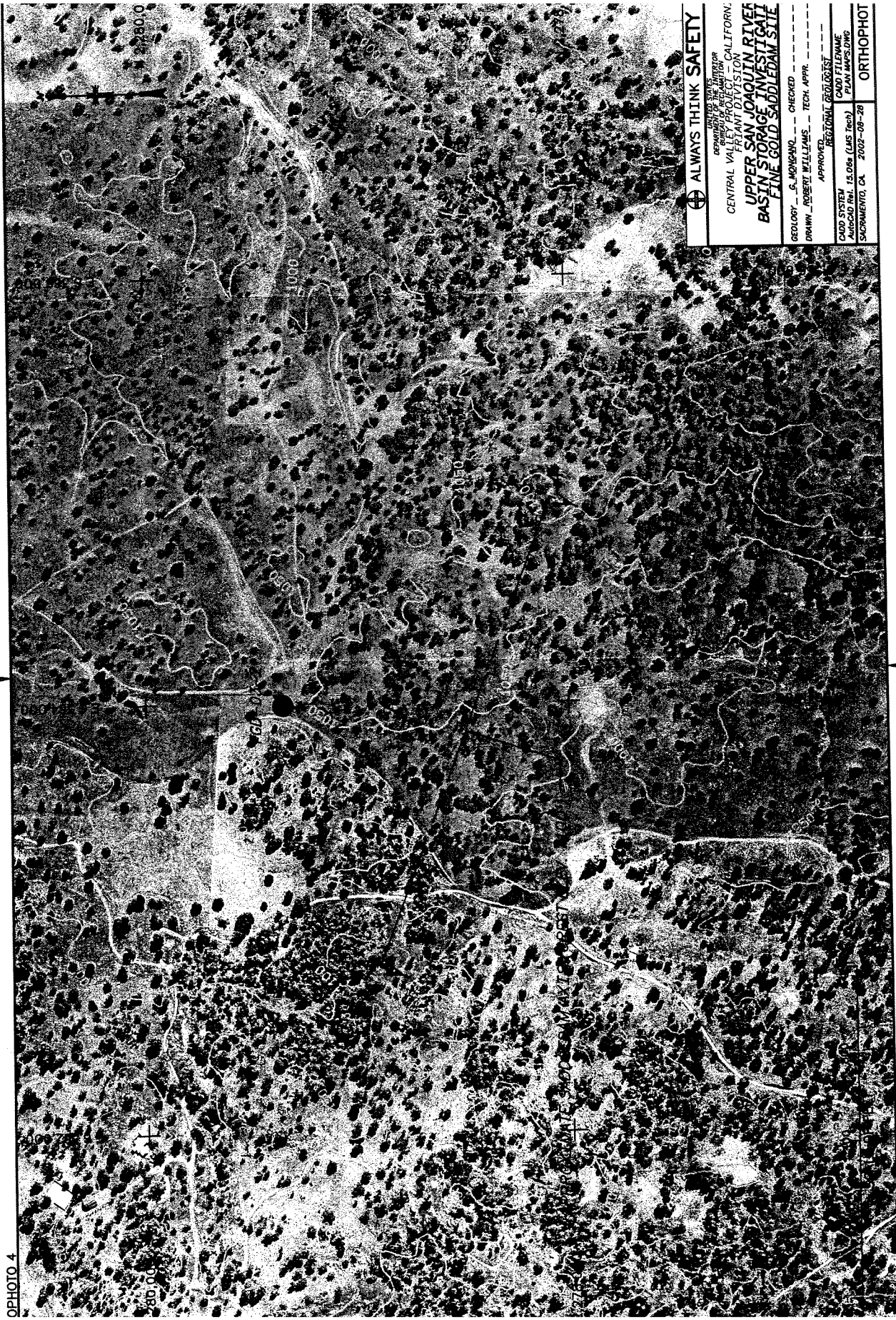
GEOLOGY: S. MORGANO --- CHECKED ---  
 DRAWN: ROBERT WILLIAMS --- TECH. APPR. ---  
 APPROVED: REGIONAL GEOLOGIST ---

CADD SYSTEM  
 AutoCAD (Rev. 15.088 (LMS Tech))  
 SACRAMENTO, CA 2002-08-28

CADD FILENAME  
 PLAN MAPS.DWG

PLAN 4

OPHOTO 4



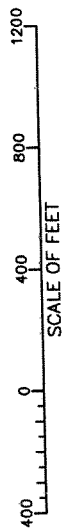
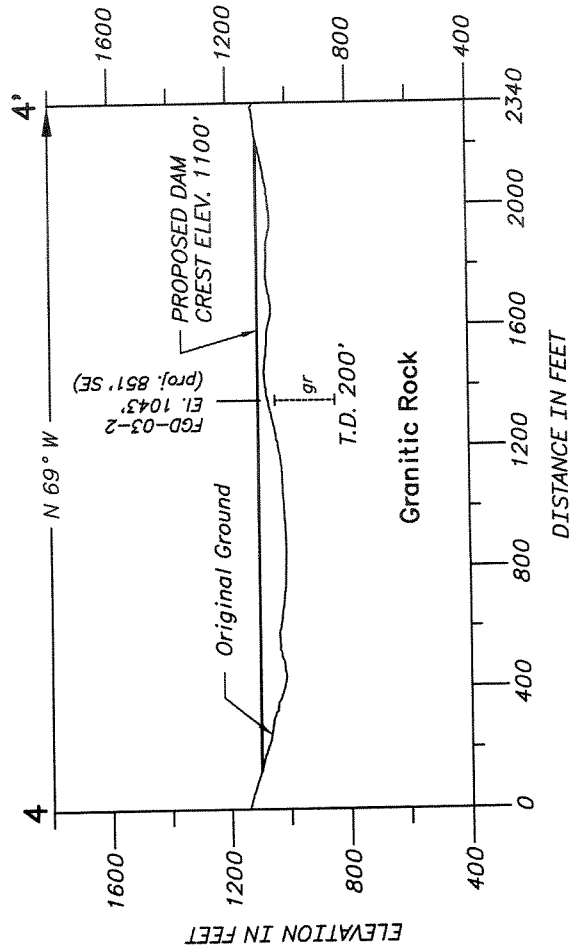
**ALWAYS THINK SAFETY**

STATE OF CALIFORNIA  
 DEPARTMENT OF THE INTERIOR  
 CENTRAL VALLEY PROJECT - CALIFORNIA  
 FRIANT DIVISION  
**UPPER SAN JOAQUIN RIVER  
 BASIN STORAGE INVESTIGATI  
 FINE GOLD SADDLEDAM SITE**

GEOLOGY - G. MORGENTHAU - CHECKED  
 DRAWN - ROBERT WILLIAMS - TECH. APPR.  
 APPROVED - REGIONAL GEOLOGIST

CADD SYSTEM AutoCAD R14.1 (LMS Tech)	CADD FILENAME PLAN M35510MG
SACRAMENTO, CA 2002-08-28	

**ORTHOPHOT**



**ALWAYS THINK SAFETY**

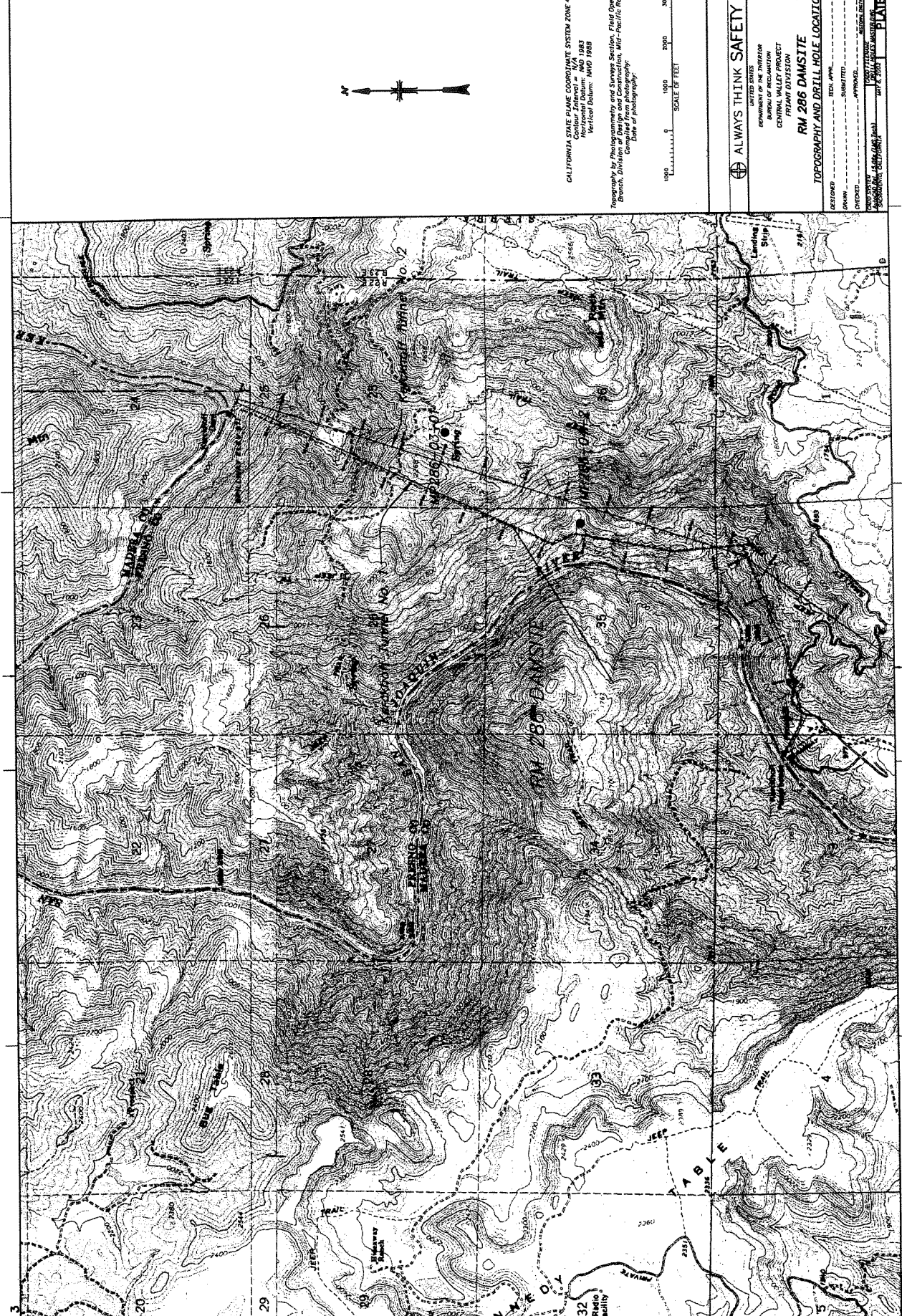
UNITED STATES OF AMERICA  
 REGISTERED PROFESSIONAL ENGINEER  
 CALIFORNIA  
 CENTRAL VALLEY PROJECT  
 UPPER SAN JOAQUIN RIVER  
 BASIN STORAGE INVESTIGATIONAL  
 FINE GOLD SADDLEDAM SECTION

GEOLOGY: G. MONGANO — CHECKED  
 DRAWN: ROBERT WILLIAMS — TECH. APPR.  
 APPROVED: [Signature] REGISTERED GEOTECHNICAL ENGINEER

CIVIL SYSTEM  
 AUTHORITY: 15,084 (LMS Tech) TO DISE SECTION 4  
 SACRAMENTO, CA 2002-09-28 SECTION

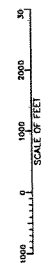






CALIFORNIA STATE PLANE COORDINATE SYSTEM ZONE 4  
 NAD 83  
 Horizontal Datum: NAD 1983  
 Vertical Datum: MVD 1988

Prepared by: Photogrammetry and Survey Section, Field One  
 Branch, Division of Design and Construction, Air Force Pacific Region  
 Compiled from photography:  
 Date of photography:



**ALWAYS THINK SAFETY**

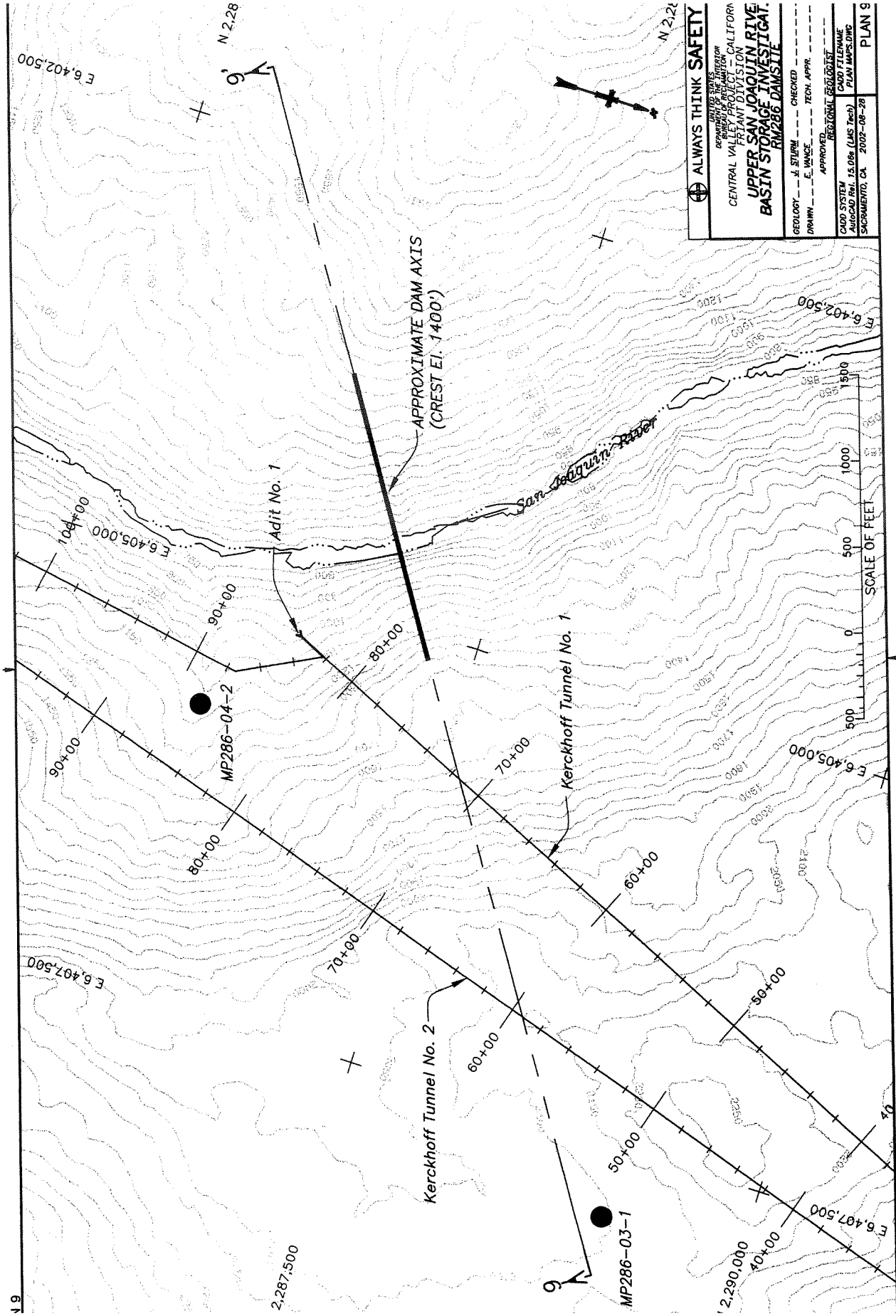
UNITED STATES  
 DEPARTMENT OF AGRICULTURE  
 CENTRAL VALLEY PROJECT  
 FRIAM DIVISION

**FM 286 DAMSITE**

**TOPOGRAPHY AND DRILL HOLE LOCALITY**

DESIGNED: \_\_\_\_\_ TECH. APPR.: \_\_\_\_\_  
 DRAWN: \_\_\_\_\_ SUBMITTED: \_\_\_\_\_  
 CHECKED: \_\_\_\_\_ APPROVED: \_\_\_\_\_  
 DATE: \_\_\_\_\_  
 DRAWN BY: \_\_\_\_\_  
 CHECKED BY: \_\_\_\_\_  
 APPROVED BY: \_\_\_\_\_  
 DATE: \_\_\_\_\_

PLATE



**ALWAYS THINK SAFETY**

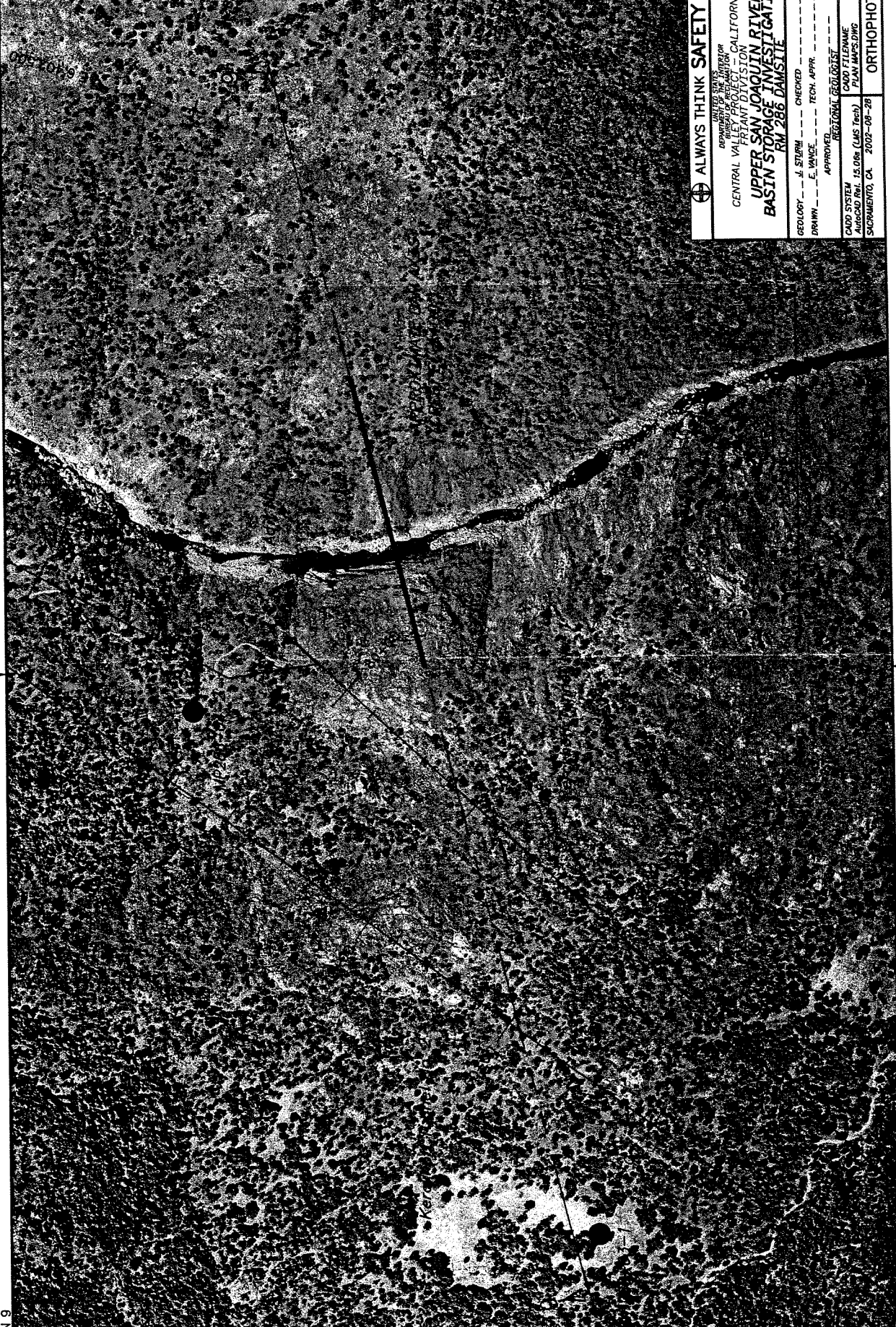
DEPARTMENT OF THE INTERIOR  
 BUREAU OF RECLAMATION CALIFORNIA  
 FERTILANT DIVISION

**UPPER SAN JOAQUIN RIVER  
 BASIN STORAGE INVESTIGAT.  
 RM286 DAMSITE**

GEOL. — J. STURM — CHECKED  
 DRAWN — E. VANCE — TECH. APPR. —  
 APPROVED — REGIONAL GEOLOGIST

CADD SYSTEM AutoCAD Rev. 15.0% (LMS Tech)  
 PLAN FILENAME PLAN M355.DWG  
 SACRAMENTO, CA 2009-08-28

PLAN 9



19

**ALWAYS THINK SAFETY**

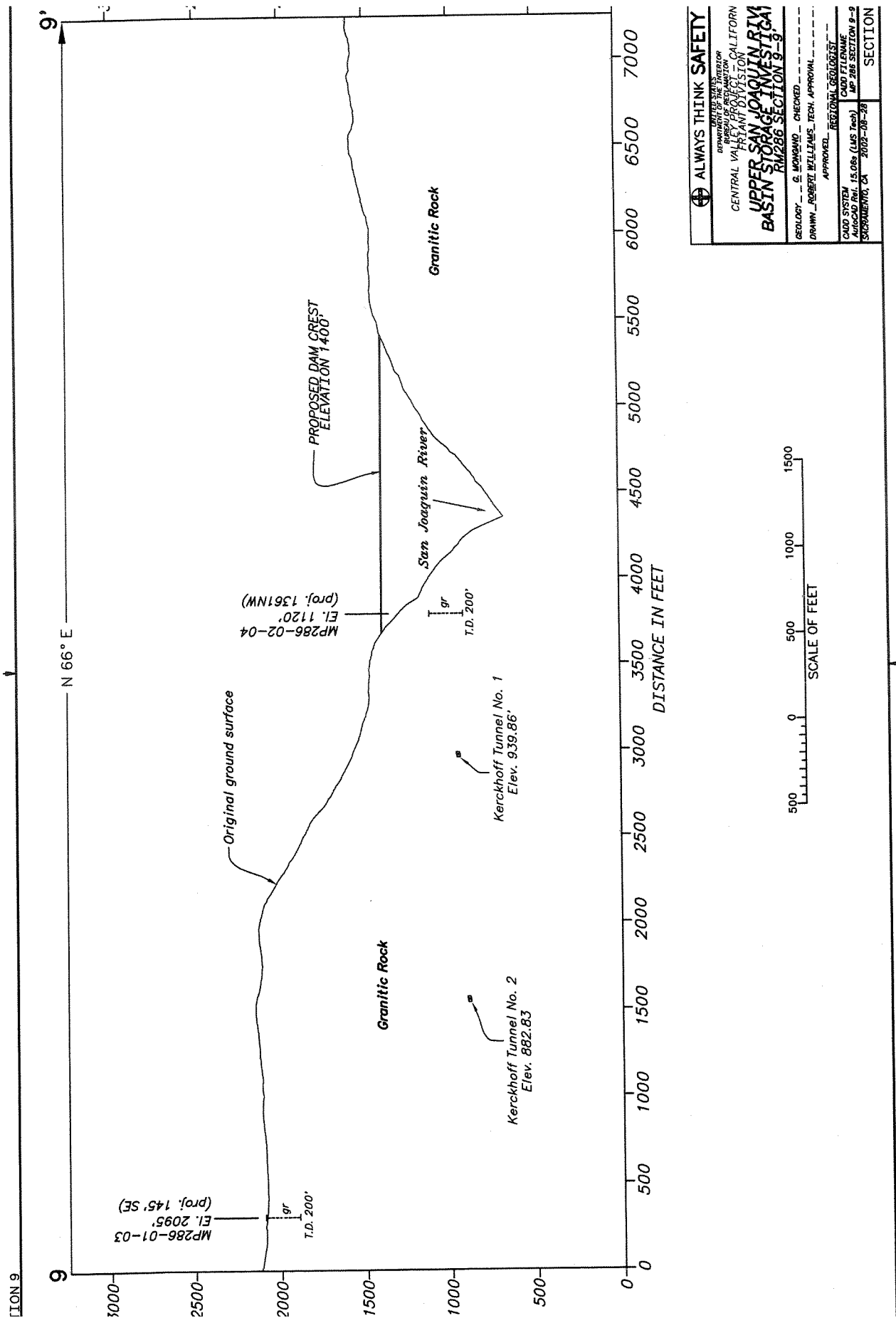
UNITED STATES  
DEPARTMENT OF AGRICULTURE  
BUREAU OF RECLAMATION

CENTRAL VALLEY PROJECT - CALIFORNIA  
PRIANT DIVISION  
**UPPER SAN JOAQUIN RIVER  
BASIN STORAGE INVESTIGATION  
RM 286 DAMSITE**

GEOLGY --- J. STURM      CHECKED  
DRAWN --- E. WADGE      TECH. APPR. ---  
APPROVED: \_\_\_\_\_

20020815 08010101  
CADD FILENAME  
CADD TITLE  
PROJECT NO. 15.086 (LMS Tech) PLAN NAME: DWG  
SACRAMENTO, CA 2002-08-28

**ORTHOPHOTO**



**ALWAYS THINK SAFETY**

UNITED STATES  
DEPARTMENT OF THE INTERIOR  
CENTRAL VALLEY PROJECT - CALIFORNIA  
PLANT DIVISION

**UPPER SAN JOAQUIN RIVER  
BASIN STORAGE INVESTIGATION  
RM286 SECTION 9-9**

GEOLOGY - G. MORGAN - CHECKED  
DRAWN - ROBERT WILLIAMS - TECH. APPROVAL  
APPROVED - REGIONAL GEOLOGIST

CADD SYSTEM  
AUGUST 1981 - 15.08 (L.S. 1981)  
SACRAMENTO, CA - 2022-08-28

CADD FILENAME  
MP-286 SECTION 9-9  
SECTION