

---

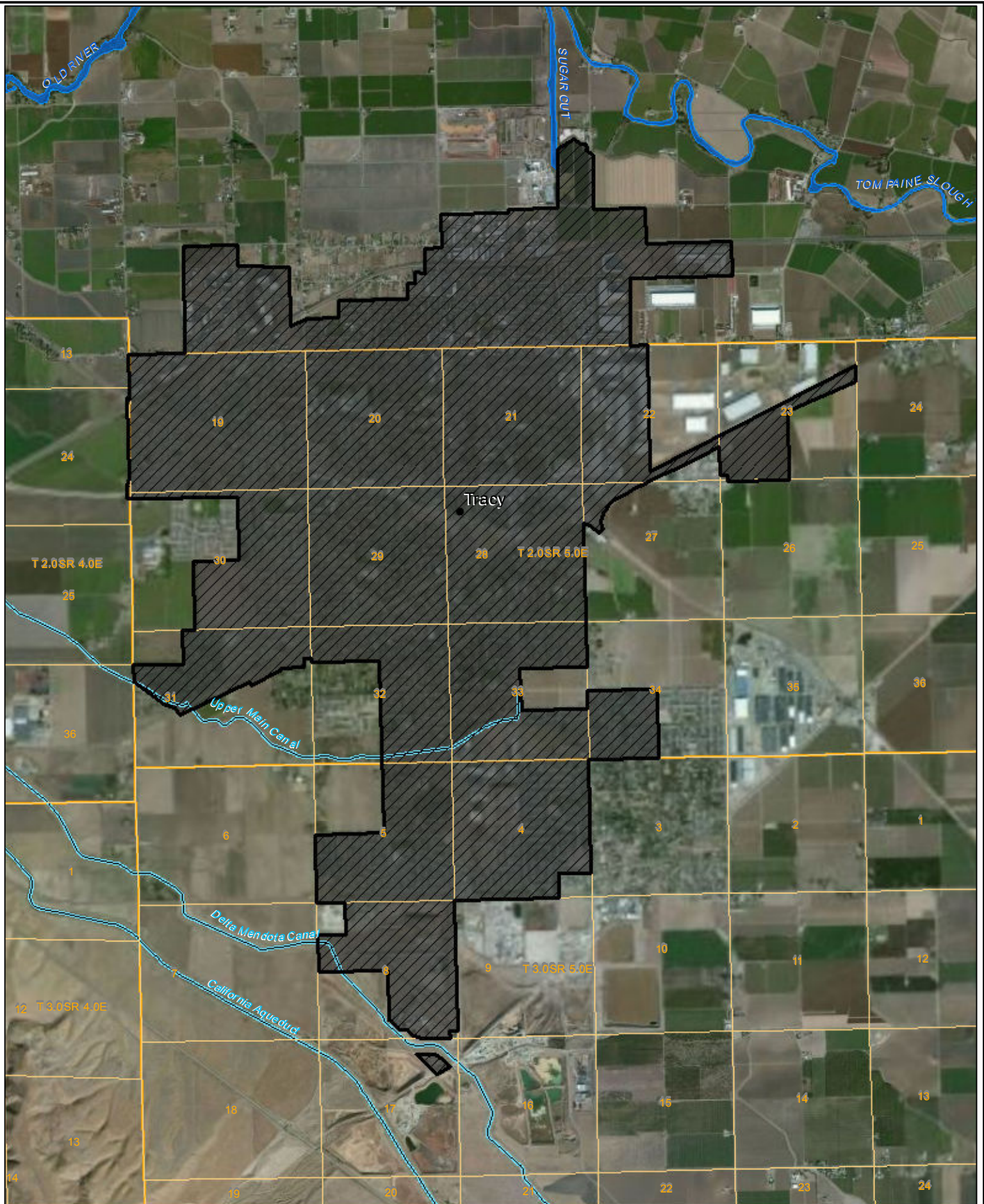
FINAL ENVIRONMENTAL ASSESSMENT (11-049)

*THREE DELTA DIVISION AND FIVE SAN LUIS UNIT WATER SERVICE INTERIM  
RENEWAL CONTRACTS 2012-2014*


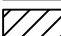
**Appendix A**  
**Contractor's Service Area Maps**

---

February 2012



**City of Tracy**  
(Partial Assignment from The West Side I.D.)  
14-06-200-4305A-IR13-B

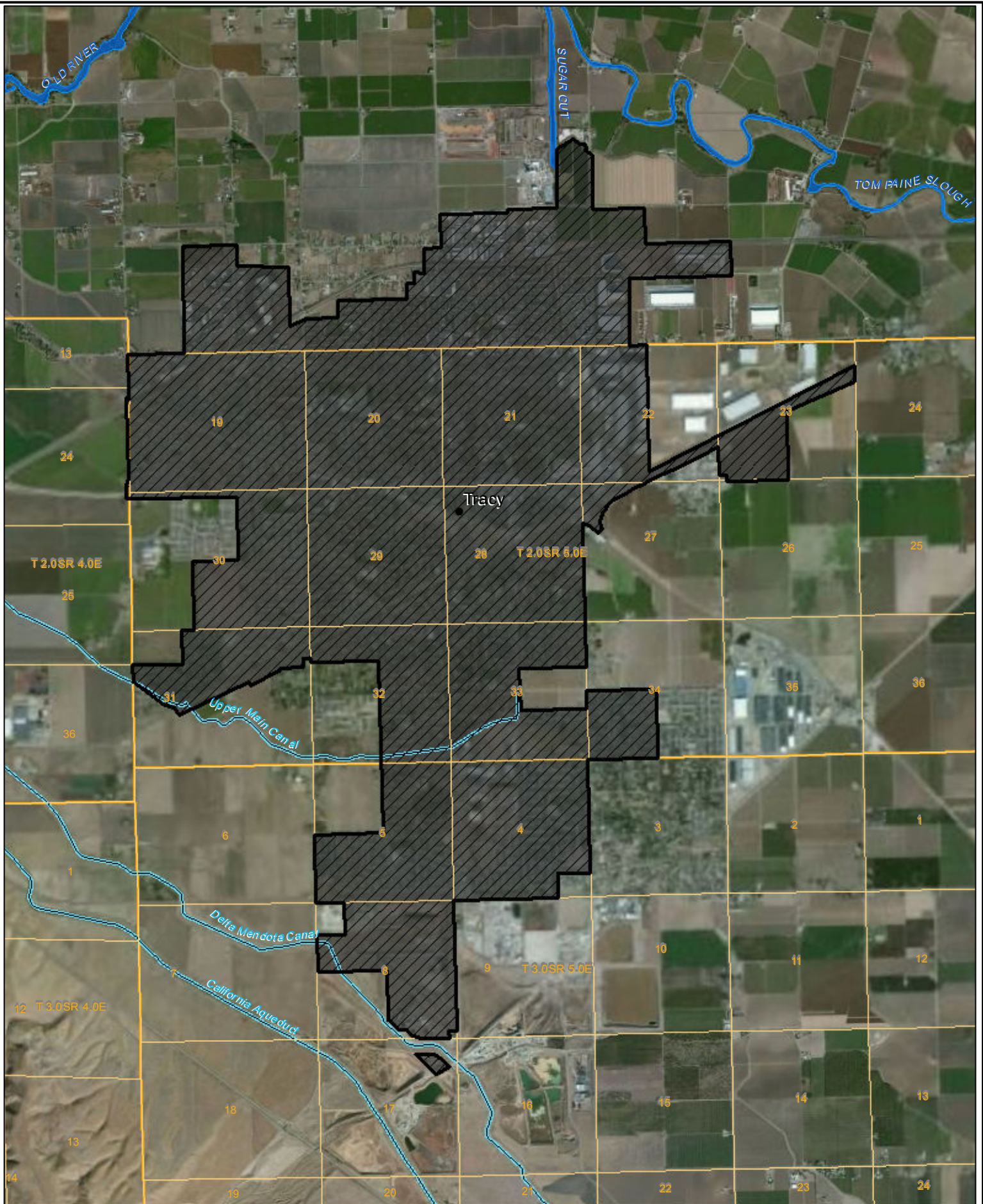
-  District Boundary
-  Contractor's Service Area

Date: October 17, 2011  
File Name: N:\Districts\Contract\city\_of\_tracy\CityofTracyAssignFromWestSide.mxd


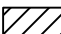


214-202-98





**City of Tracy**  
(Partial Assignment from Banta Carbona I.D.)  
7-07-20-W0045-IR13-B

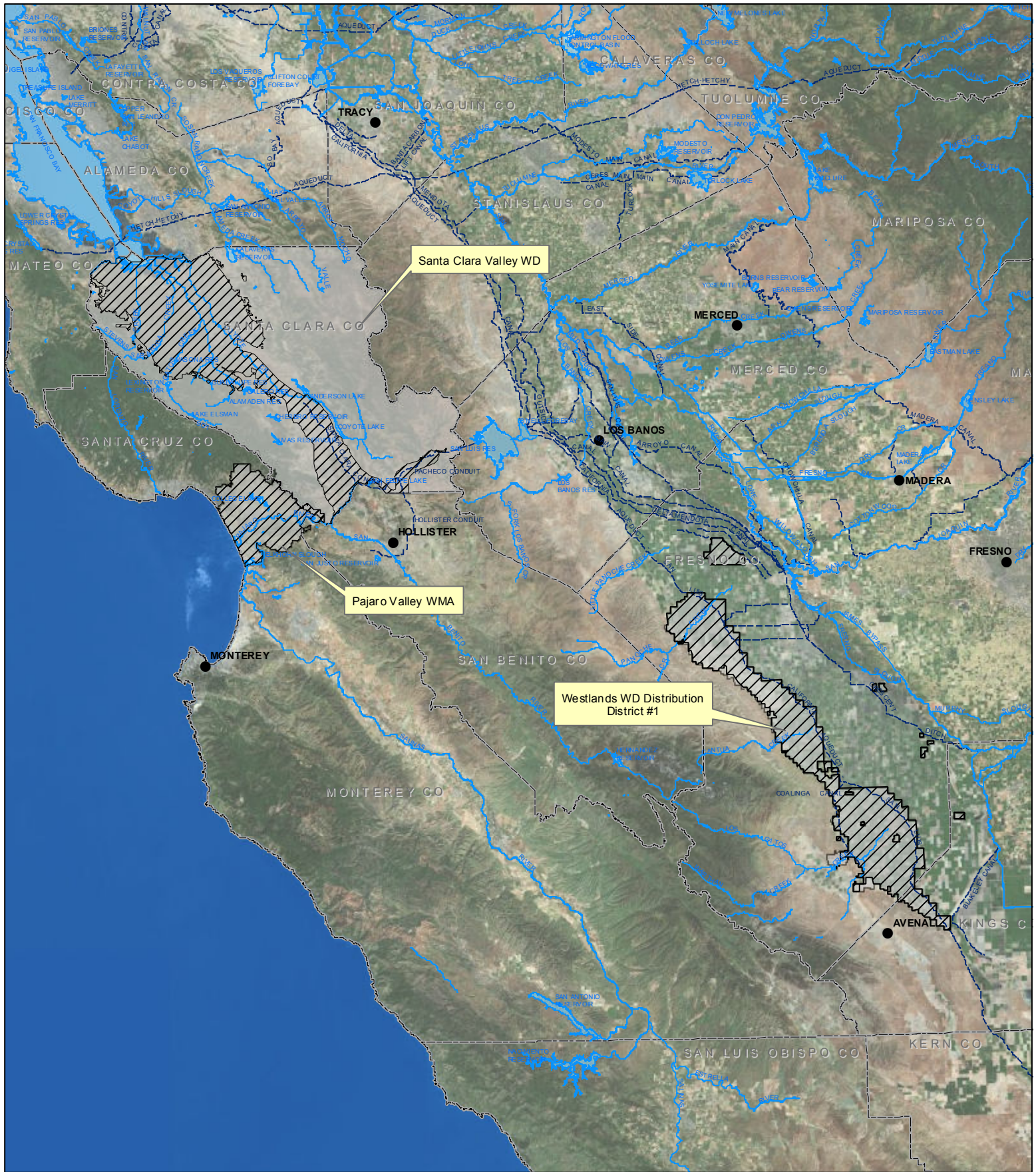
-  District Boundary
-  Contractor's Service Area

0 0.5 1 2 Miles





214-202-99





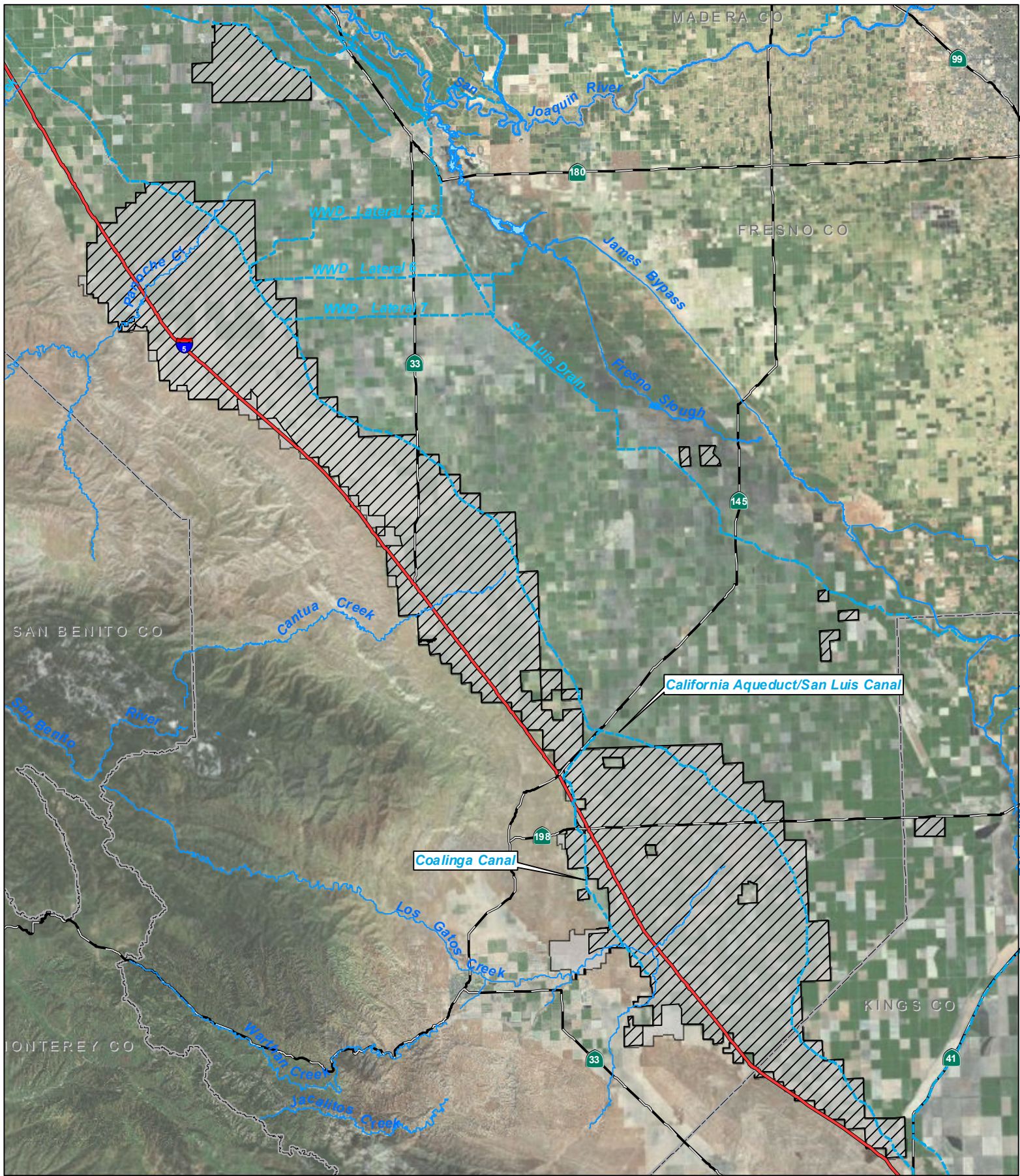
**Pajaro Valley W.M.A. - Santa Clara Valley W.D.  
Westlands W.D. Distribution District #1  
(3-Way Assignment From Mercy Springs W.D.)**

14-06-200-3365A-IR13-B

-  Contractor's Service Area
-  District Boundary







# **Westlands W.D. Distribution District #1 (Full Assignment From Broadview W.D.)**

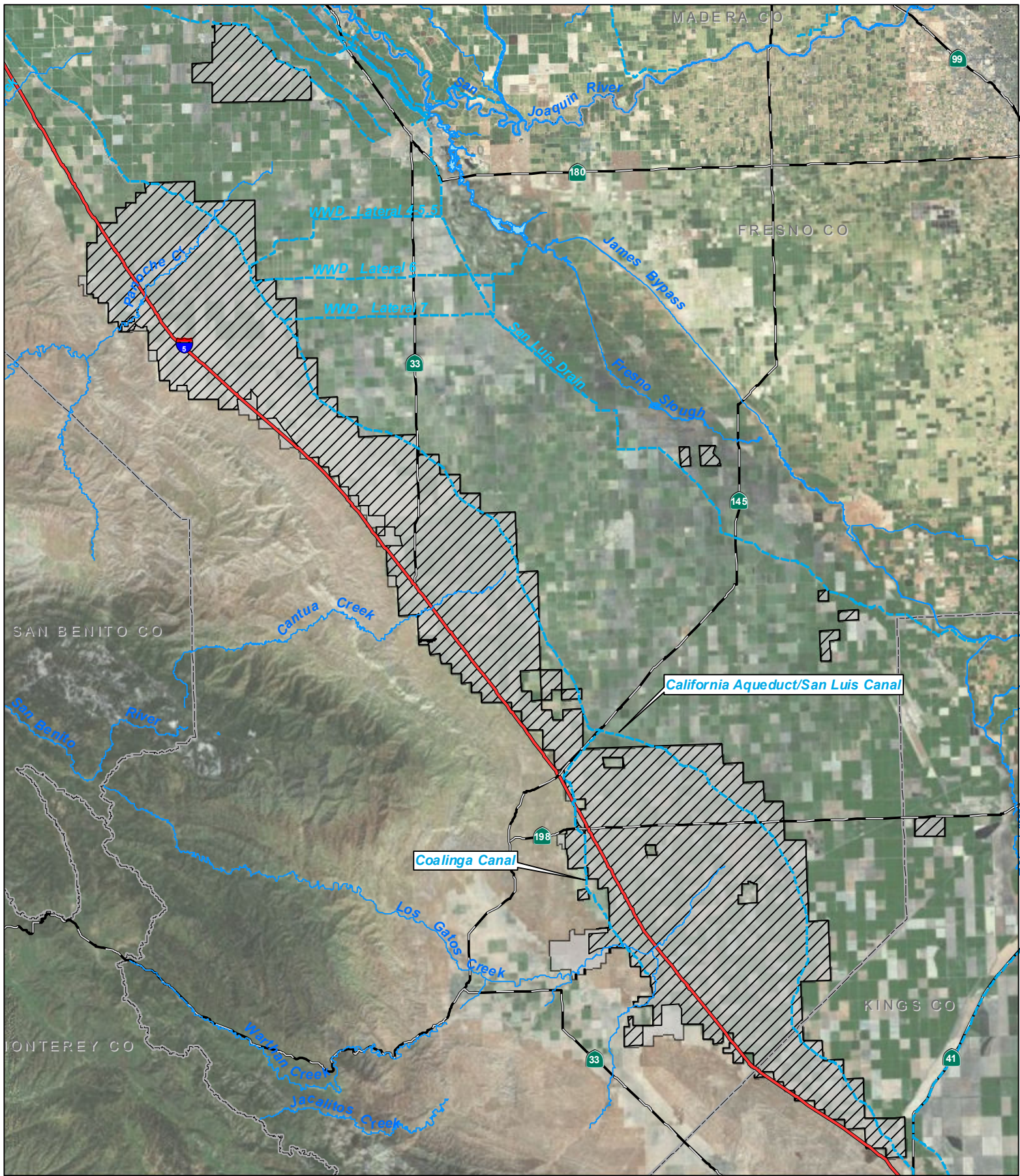
14-06-200-8092-IR13

-  District Boundary
-  Contractor's Service Area

0 2.5 5 10 Miles


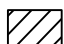






**Westlands W.D. Distribution District #1  
(Full Assignment From Centinella W.D.)**

14-06-200-W0055-IR13-B

-  District Boundary
-  Contractor's Service Area

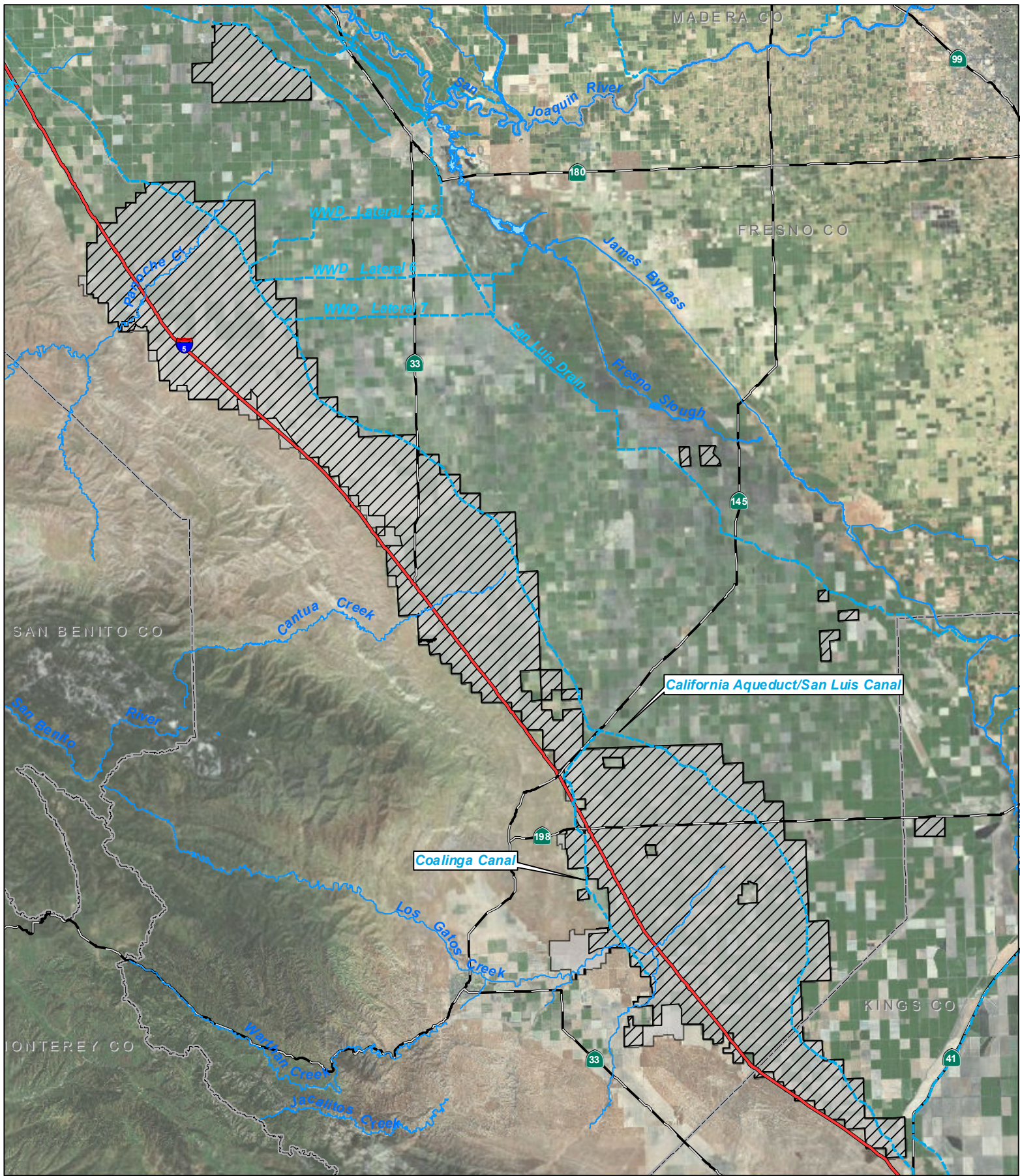
Date: October 26, 2011  
File Name: N:\Districts\Contracts\westlands #1\Westlands #12011.mxd

0 2.5 5 10 Miles



805-202-45





**Westlands W.D. Distribution District #1  
(Full Assignment From Widren W.D.)**

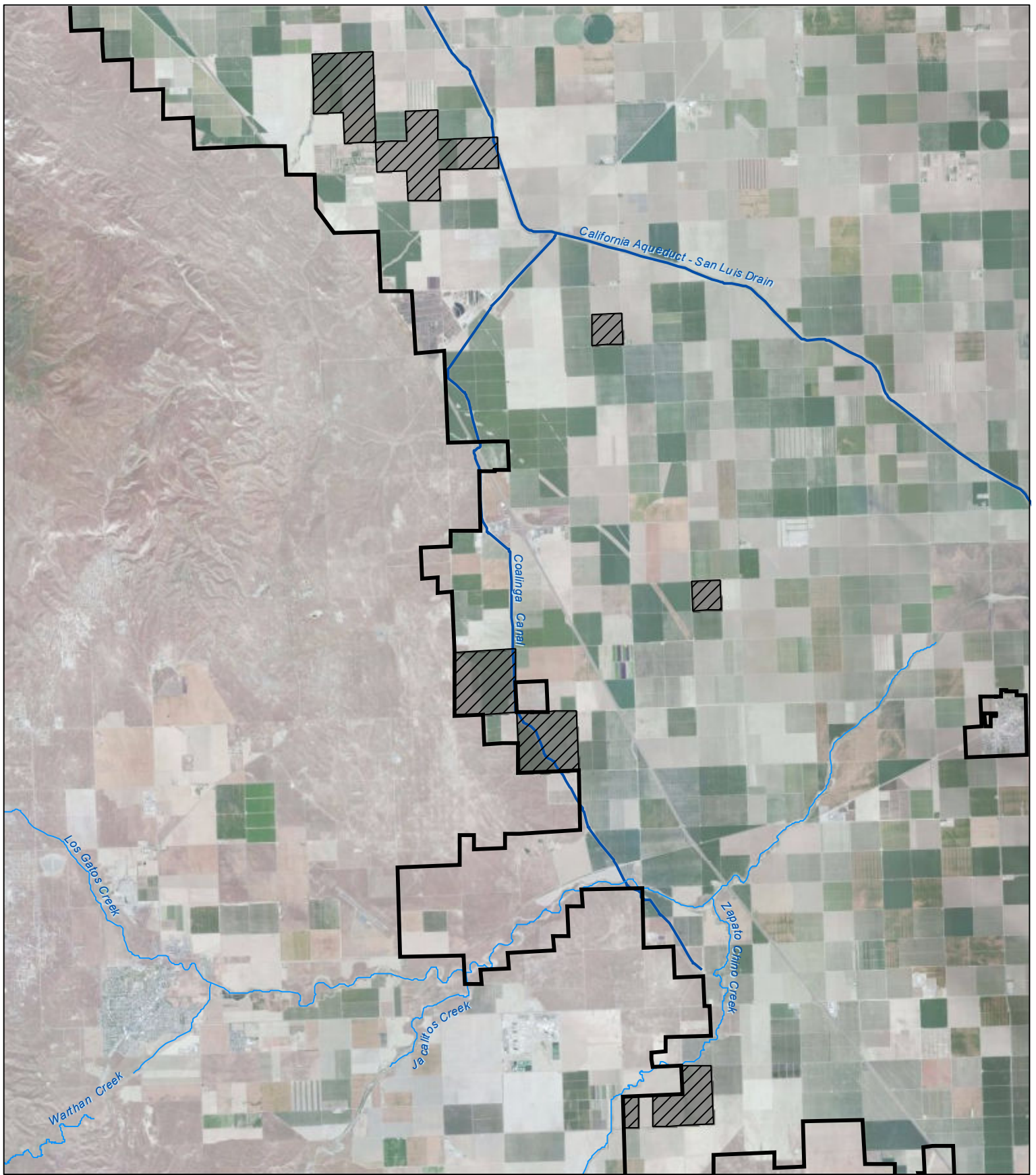
14-06-200-8018-IR13-B




-  District Boundary
-  Contractor's Service Area

0 2.5 5 10 Miles







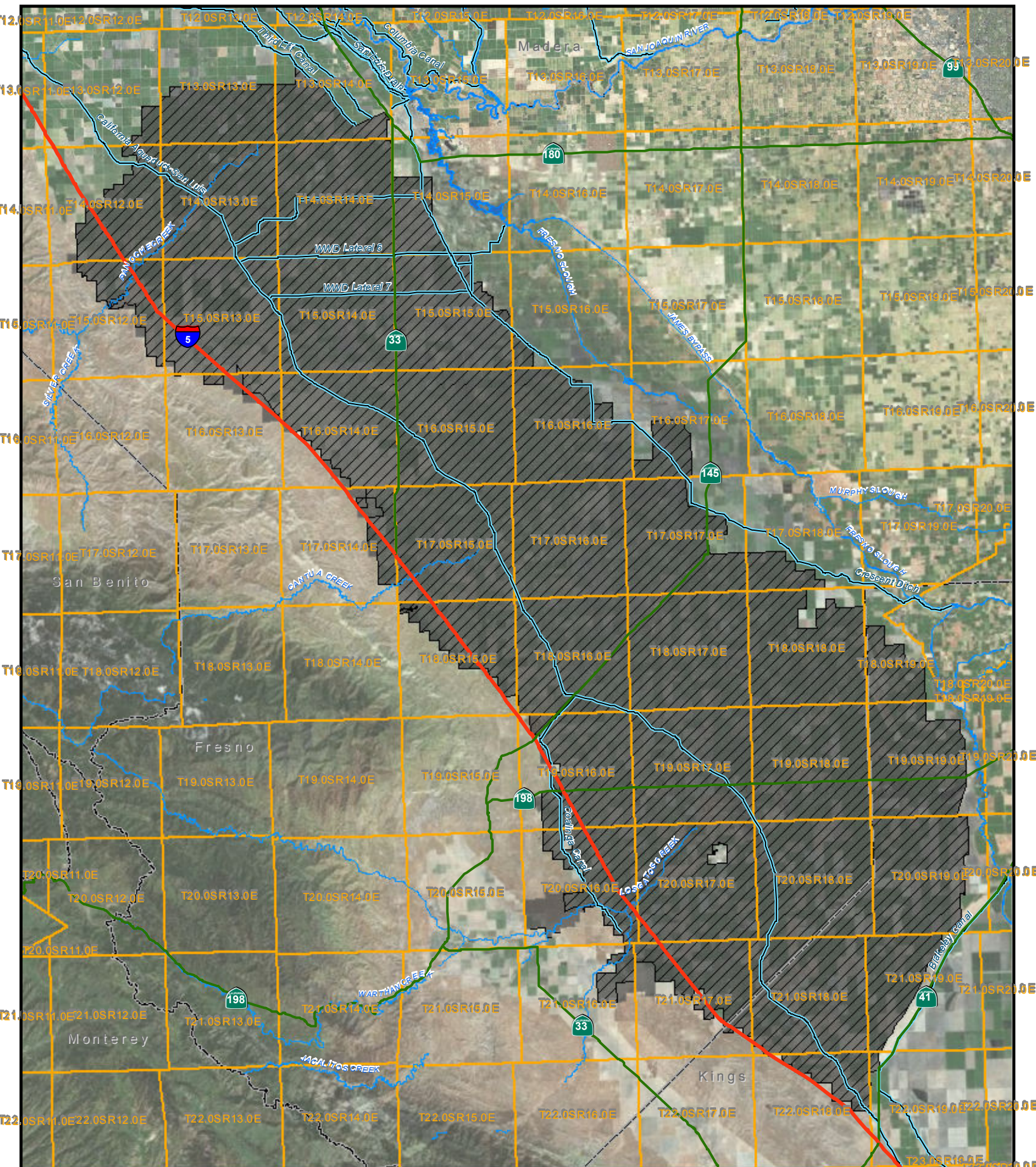
-  District Boundary
-  Contractor's Service Area
-  Westlands Water District

**Westlands Water District  
Distribution District No. 2  
(Partial Assignment From Mercy Springs W.D.)**

14-06-200-3365A-IR13-C







# Westlands Water District

14-06-200-495-IR3

- District Boundary
- Contractor's Service Area





---

FINAL ENVIRONMENTAL ASSESSMENT (11-049)

*THREE DELTA DIVISION AND FIVE SAN LUIS UNIT WATER SERVICE INTERIM  
RENEWAL CONTRACTS 2012-2014*

**Appendix B**  
**Contractor's 2006 Water Needs Assessments**

---

February 2012



# SANTA CLARA VALLEY WD

Contractor ID: 202845

San Felipe

## Water Needs Assessment

### Contractor's Water Supply Sources and Quantities (acre-feet)

Date: 5/31/2006 2:52:07

Timeframe 1	Surface Water Supply							Groundwater Supply				Total Supply 13
	Reference Delivery 2	USBR Total Deliv/Max 3	SWP 4	Local 5	Local Source 6	Trsf / Rtm / Recycle In 7	Trsf / Out 8	District 9	Private 10	Safe Yield 11	Recharge 12	
1995	152,500	*	109,250	28,756	168,536	HetchH/Local resv	15	16,000	0	159,078	114,402	335,233
2003	0		0									0
2025	152,500	*	152,500	74,000	164,800	HetchH/Local resv	14,400	0	0	165,000	132,000	438,700

### Contractor's Agricultural Water Demands

Maximum Productive Acres: 11,304

Timeframe 1	Crop Water Requirement (acre-feet) 15	District Irrig. Efficiency (%) 16	Effective Precip (acre-feet) 17	Reference Effective Precip (acre-ft) 18	Calculated Net Crop Water Req (acre-feet) 19	USBR Net Crop Water Req (acre-feet) 20	Average Irrigated Acres (acres) 21	Reference Irrigated Acres (acres) 22	Calculated FDR (AF/acre) 23	USBR FDR (AF/acre) 24	Conveyance Loss (acre-feet) 25	Total Ag Demand (acre-feet) 26
1995	71,266	75	45,953	18,879	33,751	75,514	37,757	37,757	0.89	2.00	0	33,751
2003	49,213	75	10,471		51,656		26,177		1.97		0	51,656
2025	49,213	85	10,471	10,471	45,579	47,119	26,177	26,177	1.74	1.80	0	45,579

### Contractor's M&I Water Demands

Timeframe 1	Residential Water Demand			Nonresidential Water Demand			Loss	Ref Urban Per Capita Dmd (gpcd) 35	Calc Urban Per Capita Dmd (gpcd) 36	Total M&I Demand (acre-feet) 37	Total Ag + M&I Dmd (acre-feet) 38	Unmet Demand (acre-feet) 39
	Population 28	Per Capita Demand (gpcd) 29	Total Demand (acre-feet) 30	Industrial (acre-feet) 31	Comm / Inst. (acre-feet) 32	Total Demand (acre-feet) 33	Unacc. / Distr. (acre-feet) 34					
1995	1,599,100	174.0	311,620	0	0	0	0	274.0	174.0	311,620	345,371	10,138
2003						0	0			0	51,656	51,656
2025	2,175,800	117.3	285,998	263,997	0	263,997	0	257.0	225.7	549,995	595,574	156,874

\* Represents Maximum Contract Amount

**Notes:** 2025 M&I Demand Data: from 2020 average data submitted by SCWD 5/2/00 FAX; no breakdown of industrial & commercial demnds. 2025 supply: CVP supply = max contract amount; Transfer In=recycled water; 40 TAF env demnd could decrease local supply--not shown. 2003 only includes information on currently agricultural cropping and water use and assumes a 75% irrigation efficiency. 2025 agricultural information based on 2003 cropping and water use and assumes an 85% efficiency.



TRACY, CITY OF

Contractor ID: 202135

# Water Needs Assessment

Delta

## Contractor's Water Supply Sources and Quantities (acre-feet)

Date: 5/25/2006 9:12:41

Timeframe 1	Surface Water Supply							Groundwater Supply				Total Supply 13
	Reference Delivery 2	USBR Total Deliv/Max 3	SWP 4	Local 5	Local Source 6	Trsf / Rtm / Recycle In 7	Trsf / Out 8	District 9	Private 10	Safe Yield 11	Recharge 12	
1995	10,000 *	0	0	0		0	0	5,000	0		0	5,000
2025	10,000 *	10,000 *	0	0		32,500	0	5,000	0		0	47,500

## Contractor's Agricultural Water Demands

Maximum Productive Acres: 3,962

Timeframe 1	Crop Water Requirement (acre-feet) 15	District Irrig. Efficiency (%) 16	Effective Precip (acre-feet) 17	Reference Effective Precip (acre-ft) 18	Calculated Net Crop Water Req (acre-feet) 19	USBR Net Crop Water Req (acre-feet) 20	Average Irrigated Acres (acres) 21	Reference Irrigated Acres (acres) 22	Calculated FDR (AF/acre) 23	USBR FDR (AF/acre) 24	Conveyance Loss (acre-feet) 25	Total Ag Demand (acre-feet) 26
1995												
2025												

## Contractor's M&I Water Demands

Timeframe 1	Residential Water Demand			Nonresidential Water Demand			Loss	Ref Urban Per Capita Dmd (gpcd) 35	Calc Urban Per Capita Dmd (gpcd) 36	Total M&I Demand (acre-feet) 37	Total Ag + M&I Dmd (acre-feet) 38	Unmet Demand (acre-feet) 39
	Population 28	Per Capita Demand (gpcd) 29	Total Demand (acre-feet) 30	Industrial (acre-feet) 31	Comm / Instit. (acre-feet) 32	Total Demand (acre-feet) 33	Unacc. / Distr. (acre-feet) 34					
1995	46,000	242.3	12,487	0	0	0	0	301.0	242.3	12,487	12,487	7,487
2025	160,000	256.7	46,000	0	0	0	0	269.0	256.7	46,000	46,000	-1,500

\* Represents Maximum Contract Amount

**Notes:** In 2025, transfers in = 10,000 ac-ft (So. San Joaquin ID), 3,000 ac-ft (Widren), 5,000 ac-ft (Banta Carbona), 5,000 ac-ft (The West Side) and 9,500 ac-ft (Plain View). Many of these transfers are uncertain.



# WESTLANDS WD

Contractor ID: 203220

West San Joaquin

# Water Needs Assessment

## Contractor's Water Supply Sources and Quantities (acre-feet)

Date: 5/25/2006 9:14:46

Timeframe 1	Surface Water Supply							Groundwater Supply				Total Supply 13
	Reference Delivery 2	USBR Total Deliv/Max 3	SWP 4	Local 5	Local Source 6	Trsfr / Rtn / Recycle In 7	Trsfr / Out 8	District 9	Private 10	Safe Yield 11	Recharge 12	
1989	1,062,509	1,130,463	0	0		32,865	5,420	0	175,000		0	1,332,908
1996	0	0										0
1999	0	0										0
2025	*	*	0	0		0	4,938	0	175,000		0	170,062
2026	*	1,150,000	0	0		0	4,938	0	175,000		0	1,320,062
2030 Distrib Dist 2	*	2,675	0	0		4,198	0	0	0		0	6,873

## Contractor's Agricultural Water Demands

Maximum Productive Acres: 532,700

Timeframe 1	Crop Water Requirement (acre-feet) 15	District Irrig. Efficiency (%) 16	Effective Precip (acre-feet) 17	Reference Effective Precip (acre-ft) 18	Calculated Net Crop Water Req (acre-feet) 19	USBR Net Crop Water Req (acre-feet) 20	Average Irrigated Acres (acres) 21	Reference Irrigated Acres (acres) 22	Calculated FDR (AF/acre) 23	USBR FDR (AF/acre) 24	Conveyance Loss (acre-feet) 25	Total Ag Demand (acre-feet) 26
1989	1,150,449	75	65,249	155,765	1,446,933	1,401,883	515,000	519,216	2.81	2.70	319	1,447,252
1996	1,229,209	75	163,895	163,895	1,420,419	1,420,419	546,315	546,315	2.60	2.60		
1999	1,269,094	75	163,754	163,754	1,473,787	1,473,787	545,847	545,847	2.70	2.70		
2025	1,366,756	85	181,830	181,830	1,394,030	1,394,030	606,100	606,100	2.30	2.30	319	1,394,349
2026	1,139,266	85	151,230		1,162,395		504,100		2.31		66,003	1,228,398
2030	10,560	85	1,330		10,859		3,598		3.02		343	11,202

## Contractor's M&I Water Demands

Timeframe 1	Residential Water Demand			Nonresidential Water Demand			Loss	Ref Urban Per Capita Dmd (gpcd) 35	Calc Urban Per Capita Dmd (gpcd) 36	Total M&I Demand (acre-feet) 37	Total Ag + M&I Dmd (acre-feet) 38	Unmet Demand (acre-feet) 39
	Population 28	Per Capita Demand (gpcd) 29	Total Demand (acre-feet) 30	Industrial (acre-feet) 31	Comm / Instit. (acre-feet) 32	Total Demand (acre-feet) 33	Unacc. / Distr. (acre-feet) 34					
1989						0	0			0	1,447,252	114,344
1996						0	0			0	0	0
1999						0	0			0	0	0
2025						0	0			0	1,394,349	1,224,287
2026						0	0			0	1,228,398	-91,664
2030						0	0			0	11,202	4,329

\* Represents Maximum Contract Amount

**Notes:** In order to limit this to an assessment of agricultural water needs, M&I water demand in the amount of 5,420 AF in 1989 and 4,938 AF in 2025 are shown as transfers out. 2030 is 2025 assessment for Westlands Distribution District #2 and includes an assignment of 4198 AF from Mercy Springs Water District, 5% conveyance loss and effective precipitation proportional to WWD 2025 estimate.



---

FINAL ENVIRONMENTAL ASSESSMENT (11-049)

*THREE DELTA DIVISION AND FIVE SAN LUIS UNIT WATER SERVICE INTERIM  
RENEWAL CONTRACTS 2012-2014*

**Appendix C**  
**Reclamation's Environmental Determinations (Cultural  
Resources, ITA)**

---

February 2012



## Healer, Rain L

---

**From:** Williams, Scott A  
**Sent:** Thursday, October 27, 2011 10:21 AM  
**To:** Healer, Rain L  
**Subject:** 12-SCAO-019: Three Delta Division and Five San Luis Unit Water Service Interim Renewal Contracts, 2012-2014

Project No. 12-SCAO-019

Rain Healer:

The proposed undertaking of the Three Delta Division and Five San Luis Unit Water Service Interim Renewal Contracts, 2012-2014 has no potential to cause effects to historic properties pursuant to the Section 106 implementing regulations at 36 CFR Part 800.3(a)(1).

Interim renewal contracts are undertaken under the authority of the CVPIA to provide a bridge between the expiration of the original long-term water service contract and the execution of a new long-term water service contract. The eight water service contracts proposed for interim renewal in 2012 are listed in Table 1-1. These eight interim renewal contracts would be renewed for a two-year period from March 1, 2012 through February 28, 2014. In the event a new long-term water service contract is executed, the interim water service contract then-in-effect would be superseded by the long-term water service contract. In the event a new long-term water service contract is executed, the interim water service contract then-in-effect would be superseded by the long-term water service contract.

**Table 1-1 Contractors, Existing Contract Amounts, and Expiration Dates**

<b>Contractor</b>	<b>Contract Number</b>	<b>Contract Quantity (acre-feet)</b>	<b>Expiration of Existing Interim Renewal Contract</b>
<b>DELTA DIVISION CONTRACTS</b>			
City of Tracy (partial assignment from West Side Irrigation District)	14-06-200-4305A-IR12-B	2,500 <sup>1</sup>	2/29/2012
City of Tracy (partial assignment from Banta-Carbona Irrigation District)	7-07-20-W0045-IR12-B	5,000	2/29/2012
Pajaro Valley Water Management Agency, Santa Clara Valley Water District, and Westlands Water District Distribution District # 1 (3-way assignment from Mercy Springs Water District)	14-06-200-3365A-IR12-B	6,260	2/29/2012
<b>SAN LUIS UNIT CONTRACTS</b>			
Westlands Water District	14-06-200-495-IR2	1,150,000	2/29/2012
Westlands Water District DD#1 (full assignment from Centinella Water District)	14-06-200-W0055-IR12-B	2,500	2/29/2012
Westlands Water District DD #1 (full assignment from Widren Water District)	14-06-200-8018-IR12-B	2,990	2/29/2012



Westlands Water District DD #1 (full assignment from Broadview Water District)	14-06-200-8092-IR12	27,000	2/29/2012
Westlands Water District DD #2 (partial assignment from Mercy Springs Water District)	14-06-200-3365A-IR12-C	4,198	2/29/2012
<sup>1</sup> With an option to acquire an additional 2,500 AF			

The EA has been prepared to examine the impacts on environmental resources as a result of delivering water to the contractors listed in Table 1-1 under the proposed interim renewal contracts. The water would be delivered for agricultural or municipal and industrial (M&I) purposes within Reclamation's existing water right place of use. The water would be delivered within the current contractor service area boundaries using existing facilities for a period of up to two years. Use of contract water for agricultural irrigation use or M&I use under the proposed interim renewal contracts would not change from the purpose of use specified in the existing contracts.

The action as presented is primarily administrative and there will be no ground disturbance nor modification of any facilities associated with this project. As the proposed action has no potential to affect historic properties, no additional consideration under Section 106 of the National Historic Preservation Act is required.

This email memo is intended to convey the conclusion of the Section 106 process for this undertaking. Please retain a copy of this memo with the EA file. Thank you for providing the opportunity to comment on this action.

Sincerely,

Scott A. Williams, M.A. Archaeologist  
Bureau of Reclamation, Mid-Pacific Region  
2800 Cottage Way, MP-153  
Sacramento, CA 95825  
916-978-5042



## Healer, Rain L

**From:** Rivera, Patricia L  
**Sent:** Thursday, October 27, 2011 9:19 AM  
**To:** Healer, Rain L  
**Cc:** Robbins, Eleanor J (Ellie)  
**Subject:** RE: EA-11-049 for your review---ELLIE THIS IS ADMIN

Rain,

I reviewed the proposed action to execute three Delta Division and five San Luis Unit interim renewal contracts beginning March 1, 2012. This interim renewal is in accordance with the Reclamation Projects Authorization and Adjustment Act of 1992 (Public Law 102-575) that included Title 34, the Central Valley Project Improvement Act (CVPIA), Section 3404(c) of the CVPIA.

Interim renewal contracts are undertaken under the authority of the CVPIA to provide a bridge between the expiration of the original long-term water service contract and the execution of a new long-term water service contract. The eight water service contracts proposed for interim renewal in 2012 are listed in Table 1-1. These eight interim renewal contracts would be renewed for a two-year period from March 1, 2012 through February 28, 2014.

**Table 1-1 Contractors, Existing Contract Amounts, and Expiration Dates**

<b>Contractor</b>	<b>Contract Number</b>	<b>Contract Quantity (acre-feet)</b>	<b>Expiration of Existing Interim Renewal Contract</b>
<b>DELTA DIVISION CONTRACTS</b>			
City of Tracy (partial assignment from West Side Irrigation District)	14-06-200-4305A-IR12-B	2,500 <sup>1</sup>	2/29/2012
City of Tracy (partial assignment from Banta-Carbona Irrigation District)	7-07-20-W0045-IR12-B	5,000	2/29/2012
Pajaro Valley Water Management Agency, Santa Clara Valley Water District, and Westlands Water District Distribution District # 1 (3-way assignment from Mercy Springs Water District)	14-06-200-3365A-IR12-B	6,260	2/29/2012
<b>SAN LUIS UNIT CONTRACTS</b>			
Westlands Water District	14-06-200-495-IR2	1,150,000	2/29/2012
Westlands Water District DD#1 (full assignment from Centinella Water District)	14-06-200-W0055-IR12-B	2,500	2/29/2012
Westlands Water District DD #1 (full assignment from Widren Water District)	14-06-200-8018-IR12-B	2,990	2/29/2012
Westlands Water District DD #1 (full assignment from Broadview Water District)	14-06-200-8092-IR12	27,000	2/29/2012
Westlands Water District DD #2 (partial assignment from Mercy Springs Water District)	14-06-200-3365A-IR12-C	4,198	2/29/2012
<sup>1</sup> With an option to acquire an additional 2,500 AF			

The Proposed Action would continue these existing interim renewal contracts, with only minor, administrative changes to the contract provisions to update the previous interim renewal contracts for the new contract period. In the event that a new long-term water contract is executed, that interim renewal contract would then expire.



The proposed action does not have a potential to affect Indian Trust Assets.

Patricia