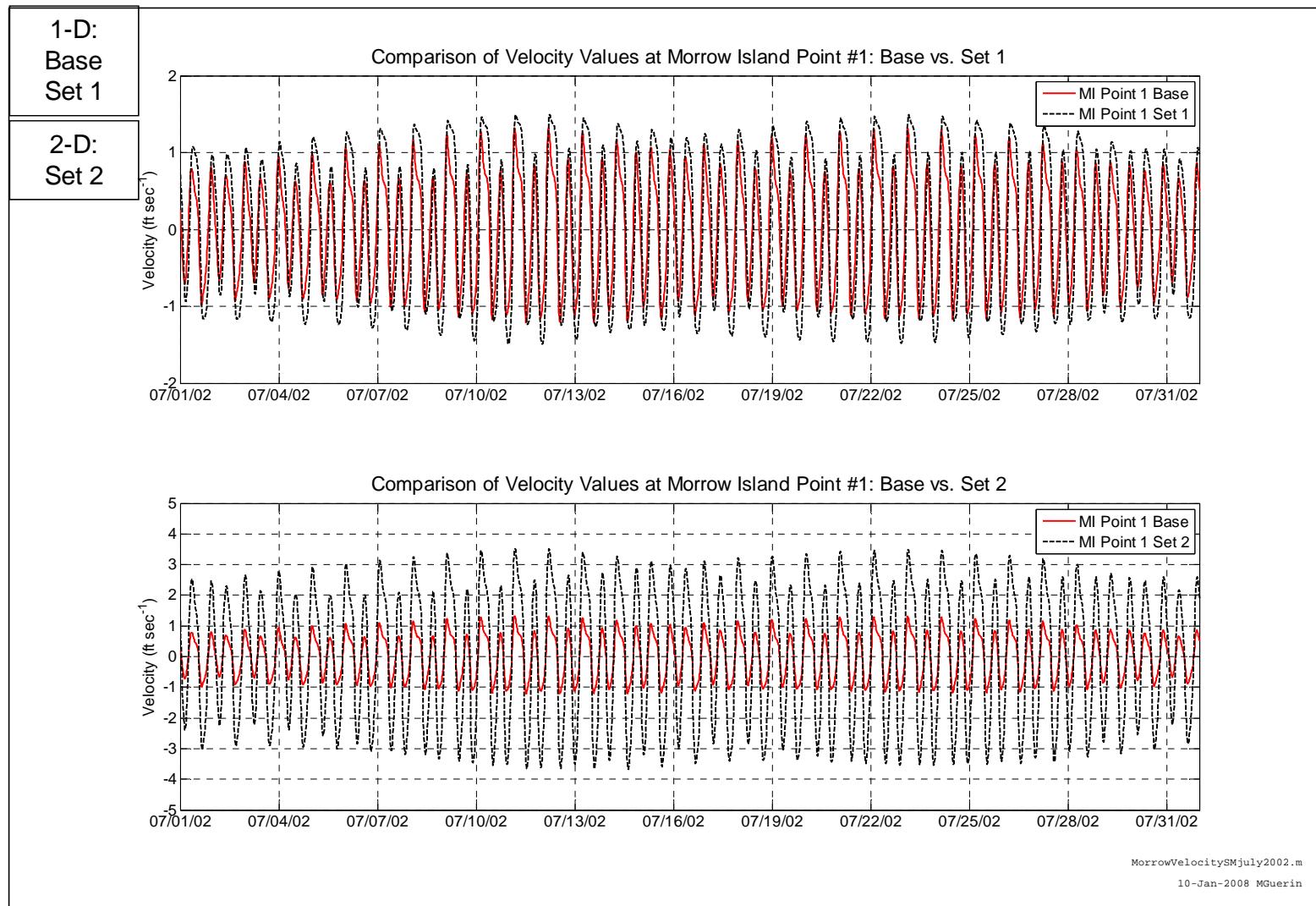


Figure 5-59 Color contour plots of velocity for Base case and Zone 1 near Morrow Island on July 12, 2002 14:00. Points analyzed: channel (Point 1) and bank (Point 2).



**Figure 5-60** Morrow Island velocity at Point 1 for Sets 1 and 2 in comparison with the Base case.

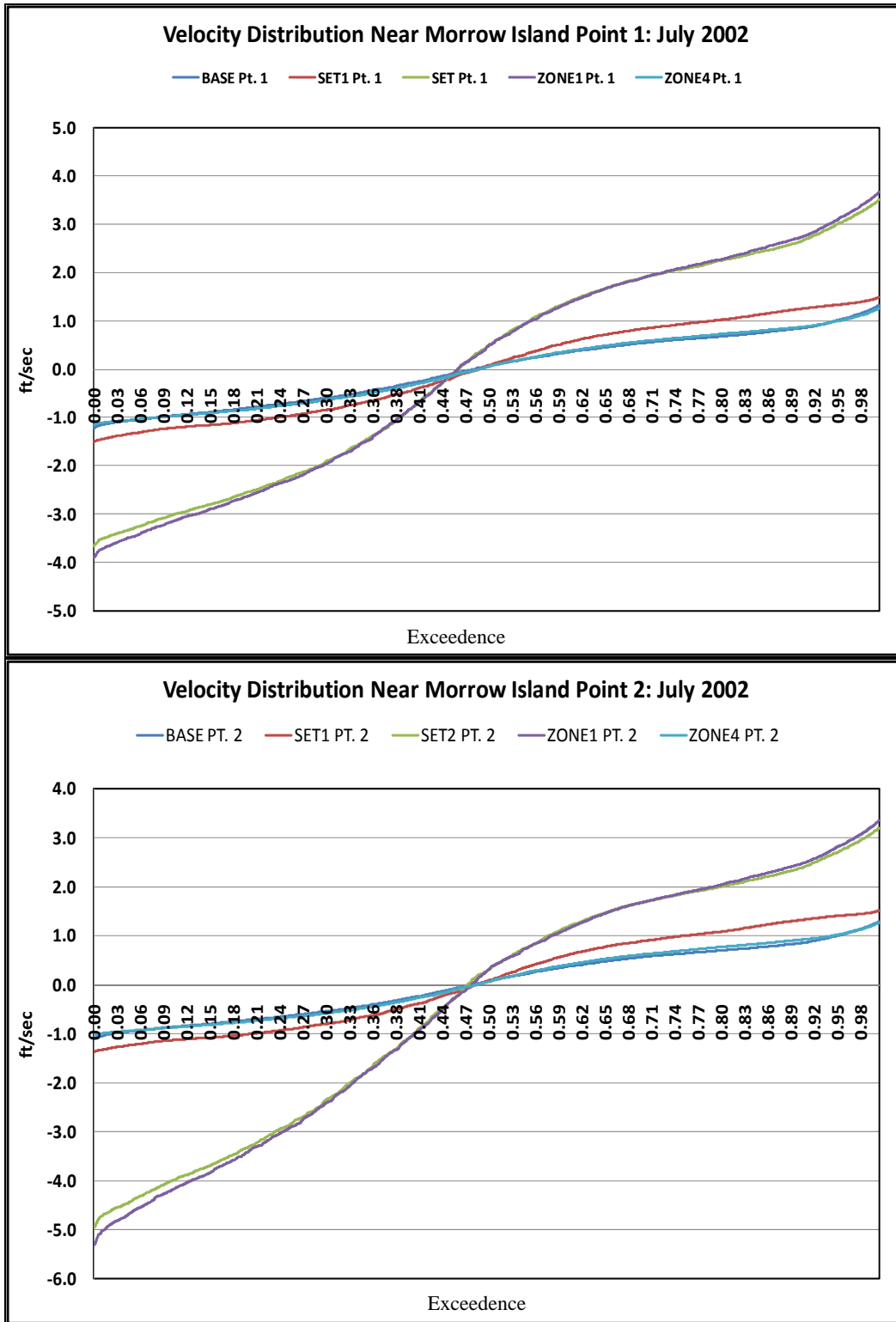


Figure 5-61 Velocity distributions for points analyzed near Morrow Island: point 1 (channel) and point 2 (bank).

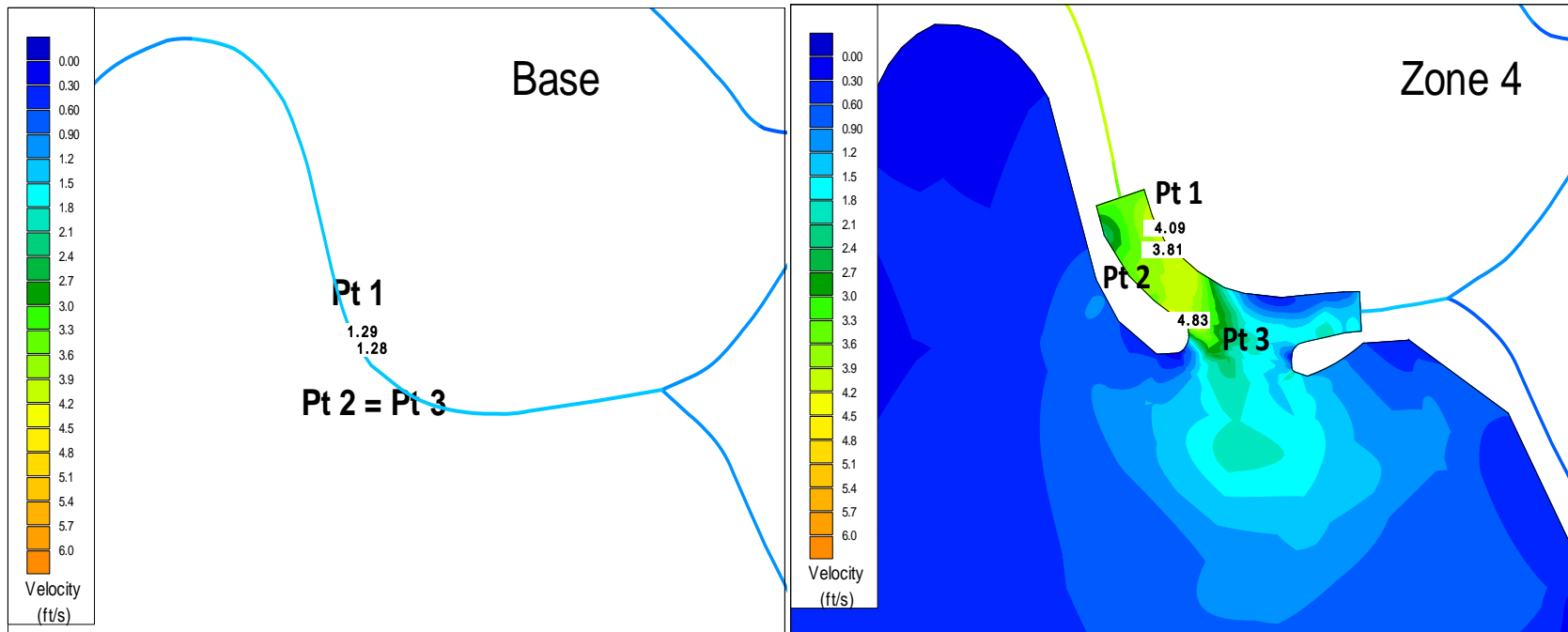
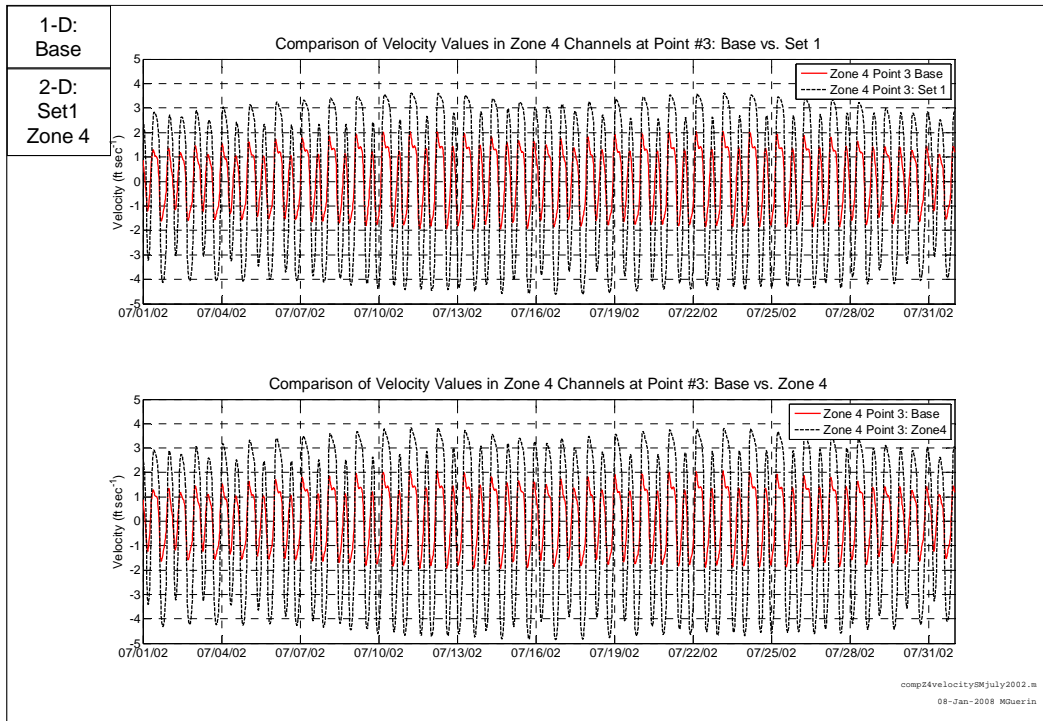
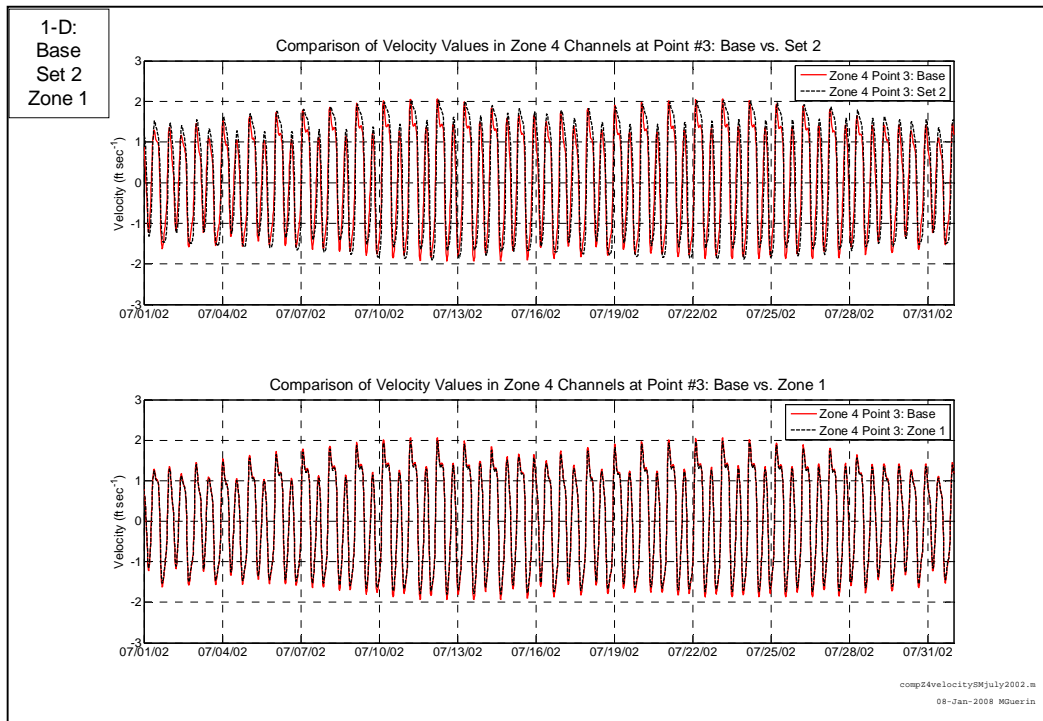


Figure 5-62 Color contour plots of velocity for Base case and Zone 4 near Meins Landing on July 17, 2002 1915. Points analyzed: points 1 and 3 (bank) and point 2 (mid-channel).



**Figure 5-63 Meins Landing velocity at Point 2 for Set 1 and Zone 4 in comparison with the Base case.**



**Figure 5-64 Meins Landing velocity at Point 2 for Set 2 and Zone 1 in comparison with the Base case.**

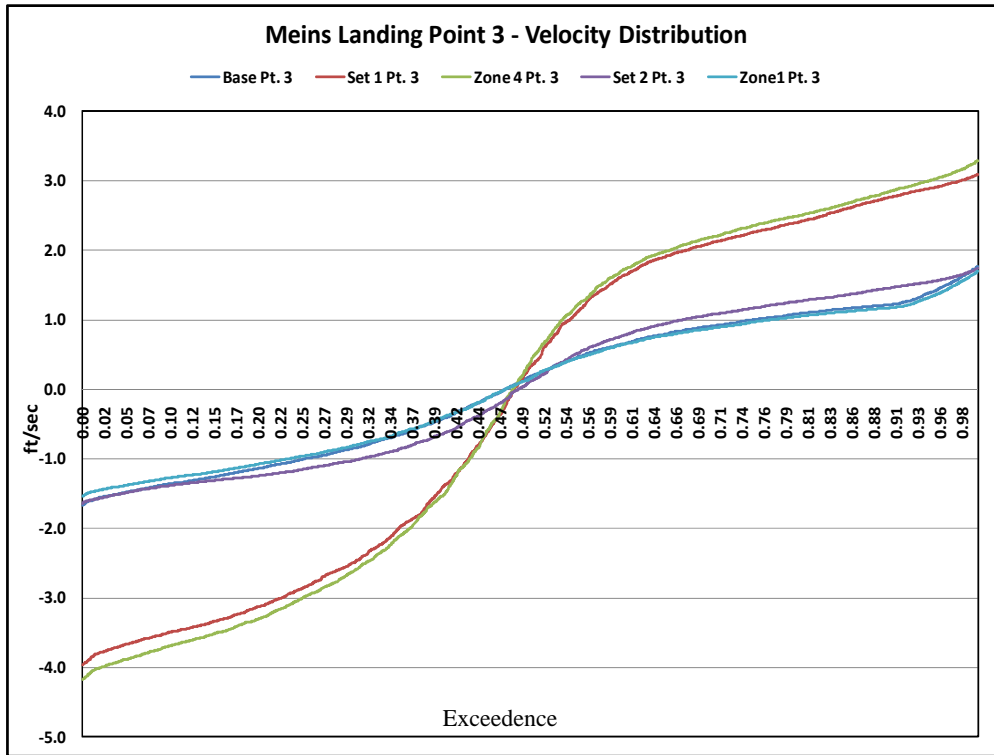


Figure 5-65 Velocity distributions for Point 3 (bank) analyzed near Meins Landing.

Exceedence

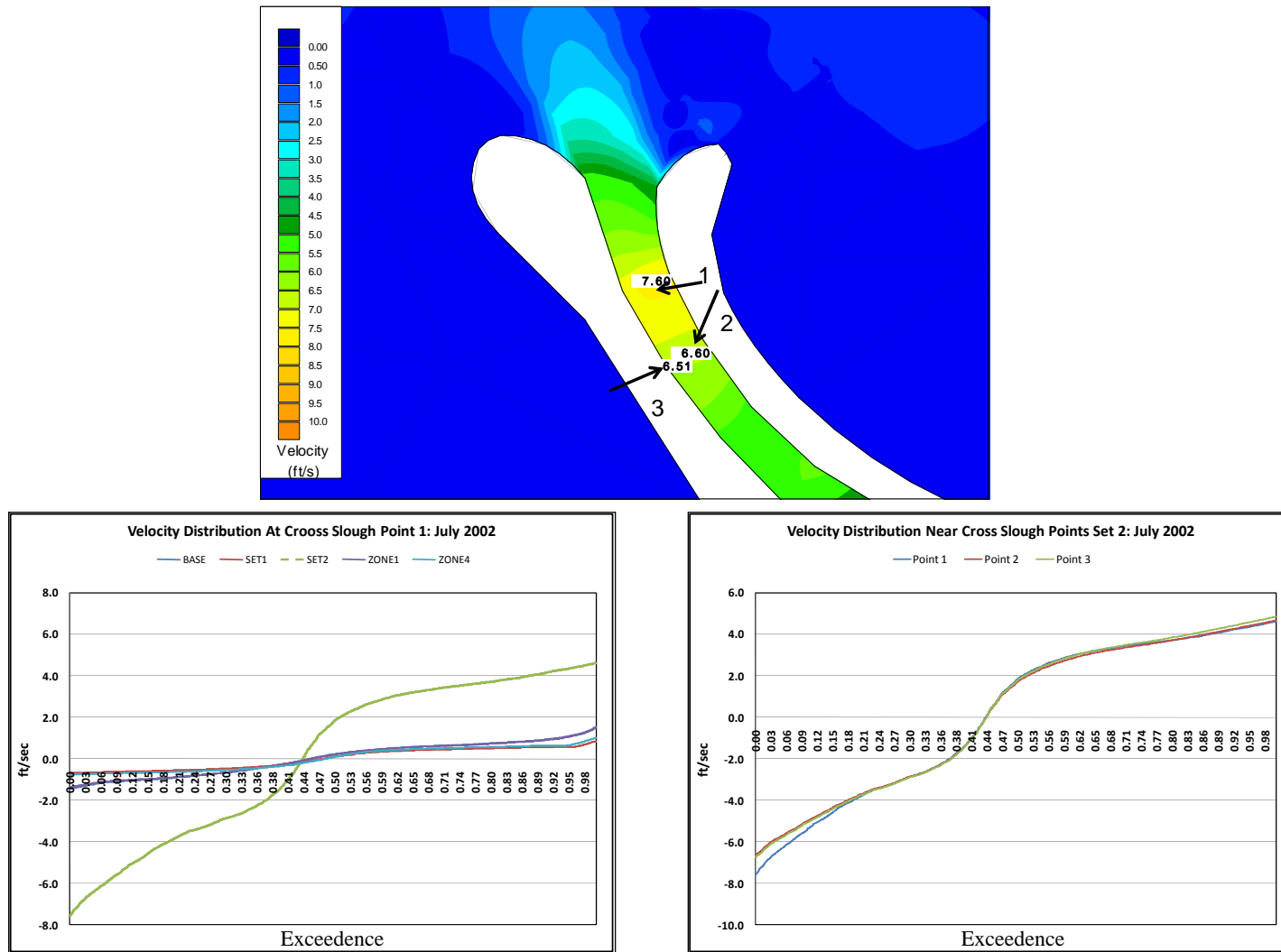


Figure 5-66 (Above) Color contour plot of Set 2 velocity near Cross Slough on July 19, 2002 23:15. (Below) Velocity distributions in Cross Slough. Points analyzed: points 1 and 2 mid-channel.

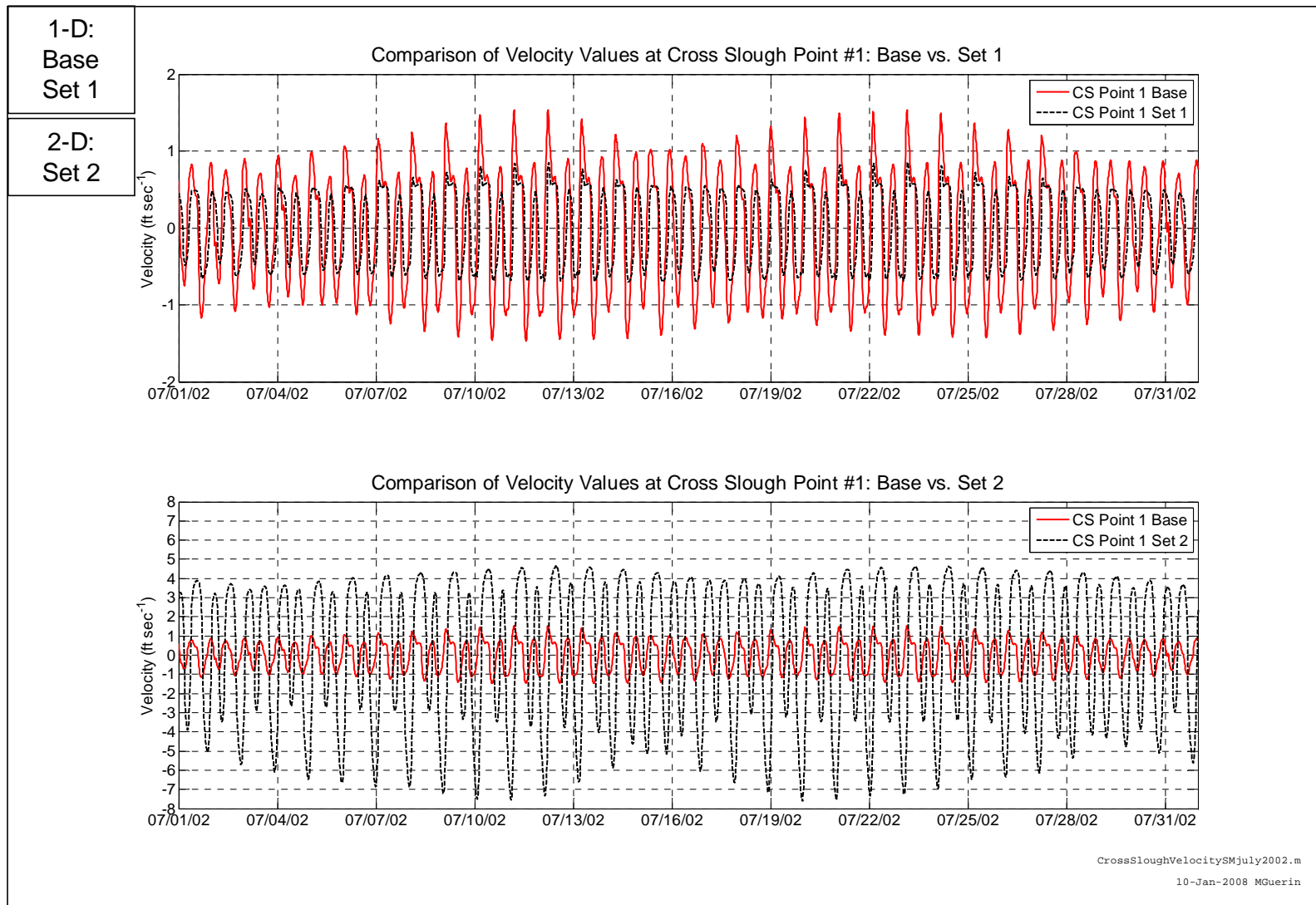
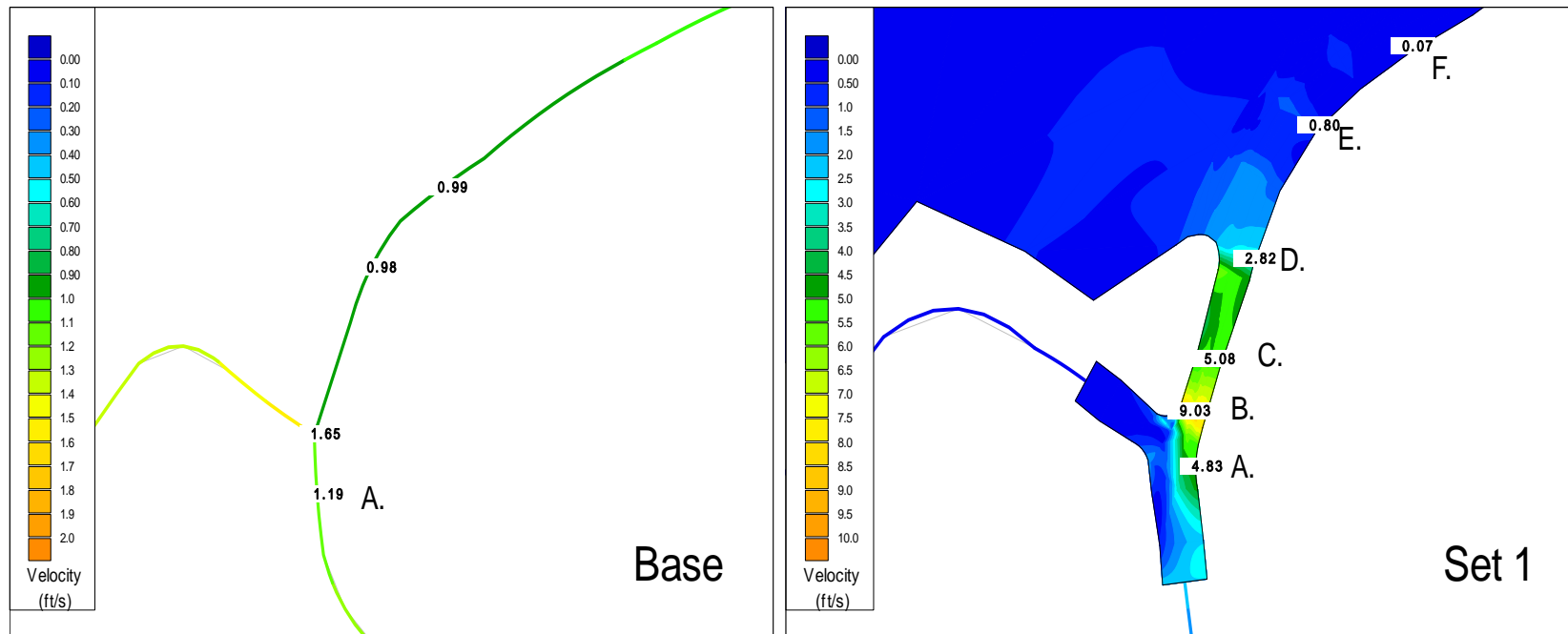


Figure 5-67 Cross Slough velocity at Point 1 for Set 1 and Set 2 in comparison with the Base case.





**Figure 5-68 Color contour plots of velocity for the Base case and set 1 scenario on July 11, 2002 04:45 (note scale differences on contour plots). Points analyzed near the Duck Club location are indicated.**

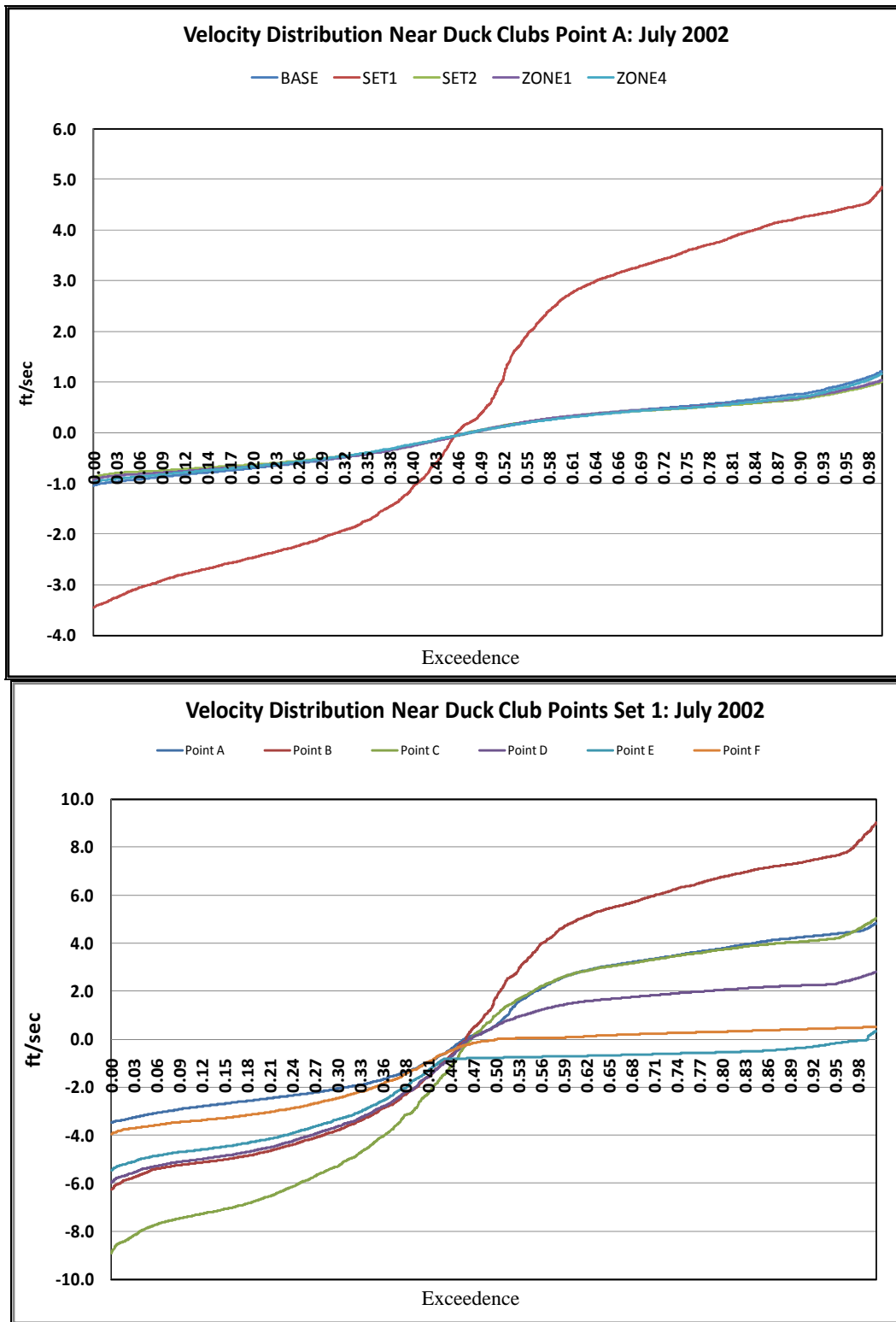


Figure 5-69 Velocity distributions for points analyzed near the Duck Club location. Lower plot shows velocity distributions for Set 1 at six points.

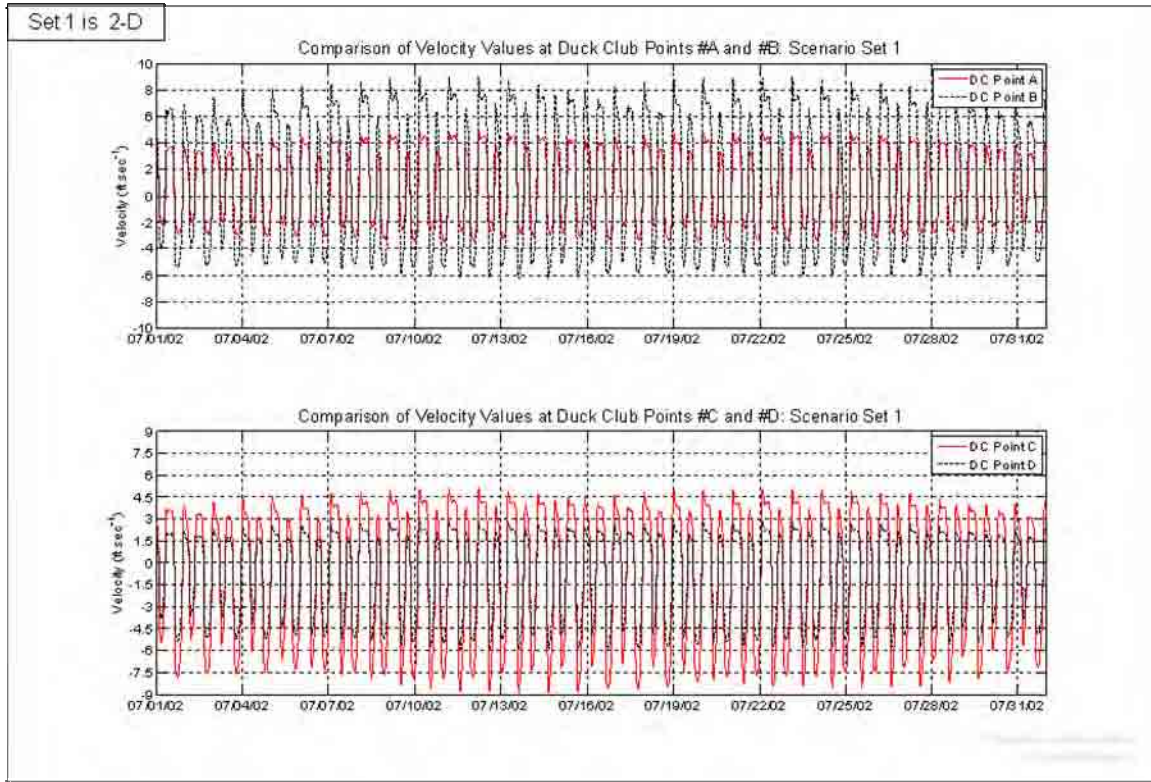


Figure 5-70 Velocity time series for points A - D analyzed near the Duck Club location.

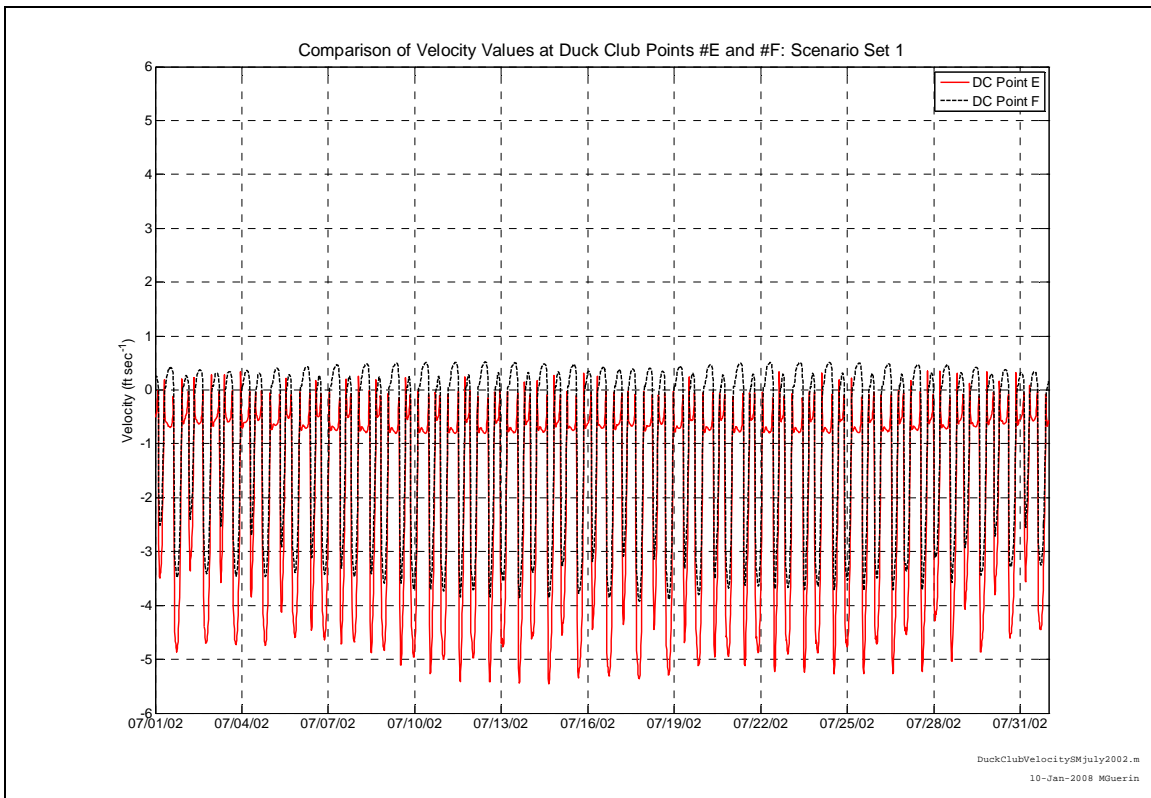


Figure 5-71 Velocity time series for points E and F analyzed near the Duck Club location.

## **6. Discussion/Summary/Conclusions**

The representation of the Suisun Marsh area in RMA's current numerical model of the San Francisco Bay and Sacramento-San Joaquin Delta system was refined to simulate the current hydrodynamics and EC of the Suisun Marsh as well as the changes to this regime under a set of four marsh restoration scenarios.

Refinement in the Suisun Marsh area involved addition of increased detail to represent off-channel storage in overbank/fringe marsh regions, a better representation of precipitation and evaporation, estimation of local creek flows, inflows and withdrawals within the Suisun Marsh, and an overall refinement of the mesh. These additions generally improved the representation of tidal dynamics and EC in Suisun Marsh.

Stage calibration was generally good in Suisun Marsh. Flows in the smaller sloughs were greatly improved by the increased detail and refinement of the grid, the addition of off-channel storage, withdrawals for managed wetlands, and representation of evaporation in the tidal marsh areas. Flow through Montezuma Slough was low in comparison with measured data, and low flows through Hunter Cut were compensated by higher flows through Suisun Slough. These results have the potential of biasing modeled EC in the marsh restoration scenarios.

EC calibration results were variable, with some areas showing good correspondence with measured data, while other areas suffered from the lack of sufficient data or from approximations intrinsic to the model. In general, EC was low everywhere in the marsh in winter 2003. EC was low year-round in the eastern end of Montezuma Slough. Problems with flow calibration in Montezuma Slough or with insufficient representation of local effects are potential causes.

Density stratification is not explicitly represented in the 2-dimensional depth-averaged formulation used in the Bay-Delta model, leading to variations in the representation of EC. In the current model, diffusion coefficients are used to approximate effects due to density stratification. The use of diffusion coefficients to improve the representation of EC during high flow periods tends to bias modeled EC when outflow is low. As a consequence, modeled EC at Martinez is low winter through spring and high summer through fall. This bias in modeled EC at Martinez propagates through western Suisun Marsh.

Using the calibrated model, four marsh restoration scenarios - Zone 1, Zone 4, Set 1 and Set 2 - were simulated and compared to a Base case. Analysis of the results indicated that each of the scenarios increased the tidal prism, but muted the tidal range and shifted stage timing throughout the marsh in comparison with the Base case. Average tidal flow generally increased in the larger sloughs and decreased in smaller sloughs in the interior regions of Suisun Marsh. Tidal flow downstream of the restoration areas will likely increase, but reduced tidal range will reduce tidal flow at the sloughs upstream of the restored areas. The peak velocity increased in sloughs near the breaches of the flooded areas, with the largest changes localized at and near the mouths of the breached levees.

This increases the potential for failure on the banks of some of the affected levees or for scouring in some of the channels.

Water quality model results for the marsh restoration scenarios indicated that Delta EC decreased during July through December for the Zone 4 and Set 1 scenarios where the breached areas were located in channels further from Suisun Bay. The Set 2 scenario resulted in EC increase in the Delta due to tidal trapping in the breached area adjacent to Suisun Bay. Tidal trapping with the Zone 1 scenario caused only minor increases in Delta EC.

Scenarios that decreased Delta EC tended to increase EC in Suisun Marsh, although changes in the details of the EC profile for each scenario depended on the particular location examined, the operation of the Suisun Marsh Salinity Control Gate (SMSCG), and the season. The Zone 1 scenario was again most similar to the Base case, with little or no EC change in the eastern marsh but some increase in the west. The Zone 4 scenario decreased EC in most of the marsh whenever the SMSCG was operating, except in eastern Montezuma Slough where it increased EC. The Set 1 scenario generally resulted in the highest EC conditions in the Marsh, except upstream of the Zone 4 breaches on Montezuma Slough.

In comparison with the Base case:

- Each of the Alternatives resulted in increased EC in Montezuma Slough at Beldon's landing either because of pulling more water from the west, as in the cases of Zone 4 and Set 1, or because of increases in EC at the west end of Montezuma Slough, as in the cases of Zone 1 and Set 2.
- Zone 1 showed little difference in EC compared with the Base case in the eastern Marsh and at Morrow Island, but resulted in at least some EC increase in the western marsh and a small increase in Montezuma Slough at Beldon's Landing. The salinity increases are due in part to large volumes of higher salinity water being pulled into the marsh through Suisun Slough and Hunter Cut.
- When the SMSCG is open, Set 1 tends to have the most pronounced EC increase of all the scenarios in all areas of the Marsh except eastern Montezuma Slough, where Set 1 has greatest EC decrease. This is because of the locations and extent of the Set 1 restoration areas result in large volumes of (higher velocity) water being pumped through the main channels and sloughs in the marsh on both incoming and outgoing tides.
- When the SMSCG is operating, Zone 4 resulted in the greatest EC reduction throughout the western and northern Marsh, and increased EC at Beldon's Landing and eastward in the Marsh. The increases occur because the fresher water from Collinville is entering the Zone 4 area rather than moving westward and northward in the marsh. With the gates open, EC was decreased in eastern Montezuma Slough and increased in Nurse Slough and at Beldon's Landing. Locations east of the breach benefit from the additional inflow of fresher water from the east, whereas less of the fresher water makes it past the breach to the west and north. Effects elsewhere were minor.

- At most locations, Set 2 increased EC when the gates were operating and otherwise resulted in increased EC or little change, in general. In the western marsh at Ibis, Cygnus and Morrow, very small decreases occurred when the SMSCG were operating. EC decreased only in eastern Montezuma Slough when the gates were open, due to increased flow of lower EC water from the east.

## **7. References**

California Department of Water Resources, Delta-Suisun Marsh Office, 2007, LiDAR Survey of the Sacramento-San Joaquin Delta. (DWR, 2007)

California Department of Water Resources, “Methodology for Flow and Salinity Estimates in the Sacramento-San Joaquin Delta and Suisun Marsh, Twenty-fifth Annual Progress Report to the State Water Resources Control Board”, October 2004. (DWR, 2004)

California Department of Water Resources, “Methodology for Flow and Salinity Estimates in the Sacramento-San Joaquin Delta and Suisun Marsh, Twenty-third Annual Progress Report to the State Water Resources Control Board”, June 2002. (DWR, 2002)

California Department of Water Resources, “Methodology for Flow and Salinity Estimates in the Sacramento-San Joaquin Delta and Suisun Marsh, Twenty-second Annual Progress Report to the State Water Resources Control Board”, August 2001. (DWR, 2001)

California Department of Water Resources, “Estimation of Delta Island Diversions and Return Flows”, February 1995. (DWR, 1995)

California Department of Water Resources, Suisun Marsh Branch, Unpublished data in preparation. (DWR, 2004a)

Cheng, R.T. and V. Casulli, 2002, Evaluation of the UnTrim model for 3-D tidal circulation, Proceedings of the 7<sup>th</sup> International Conference on Estuarine and Coastal Modeling, St. Petersburg, FL, November 2001, p. 628-642.

Foreman, M.G.G., “Manual for Tidal Heights Analysis and Prediction”, Institute of Ocean Sciences, Patricia Bay, Sidney, B.C., 1977.

Hills, “New Flow Equations for Clifton Court Gates”, Technical Memorandum. California Department of Water Resources, State Water Project Division of Operations and Maintenance, Sacramento California, 1988.

King, I. P., “RMA11 – A Three-Dimensional Finite Element Model for Water Quality in Estuaries and Streams, Version 2.6”, Resource Management Associates, 1998.

King, I. P., “RMA2 - A Two-Dimensional Finite Element Model for Flow in Estuaries and Streams, Version 4.3”, Resource Management Associates, 1990.

RMA, “Flooded Islands Feasibility Study: RMA Delta Model Calibration Report”, June 2005.

RMA, “Mathematical Modeling of Hydrodynamic and Water Quality Impacts of Suisun Marsh Levee Breaches”, December 2000.

RMA, “Water Quality Impacts of Central Contra Costa Sanitary District Discharge on San Francisco Bay”, August 2000.

RMA, “Impacts of the BADA Discharges on Copper Levels in the San Francisco Bay”, March 1998.

RMA, “Dilution Analysis and Water Quality Impacts of the Palo Alto Regional Water Quality Control Plant on South San Francisco Bay”, December 1997.

RMA, “Dilution Analysis and Water Quality Impacts of the Novato Sanitary District to San Pablo Bay”, January 1997.