

RECLAMATION

Managing Water in the West



Contra Loma Reservoir and Recreation Area Resource Management Plan Public Workshop

Wednesday, August 4, 2010

Sutter Elementary School • Antioch, CA

FINAL MEETING SUMMARY

I. Workshop Purpose

A public workshop was convened by the U.S. Bureau of Reclamation (Reclamation) on August 4, 2010 in Antioch, California to solicit input for development of a Resource Management Plan (RMP) for the Contra Loma Reservoir and Recreation Area (Contra Loma). The purpose of the public workshop was to provide an overview of the planning and environmental review process, identify key resource and land use issues, solicit input (i.e., comments and information) about Contra Loma, and identify opportunities, and constraints to manage the resources at Contra Loma. The workshop agenda is attached as Appendix A.

II. Welcome and Project Overview

Sheryl Carter, Reclamation, welcomed participants and provided an overview of Reclamation and the RMP process. Ms. Carter noted the following key points: Reclamation owns Contra Loma and manages it in partnership with the City of Antioch, East Bay Regional Park District (EBRPD), and Contra Costa Water District (CCWD); the current management agreement with EBRPD will expire in December 2010, and a new agreement will be needed that incorporates decisions in the RMP; and the goal of the workshop is to solicit comments on how the public would like to see Contra Loma and its resources managed in the future.

Scott Goebel, NSR, further described Contra Loma, its managing partners, and the RMP process. Mr. Goebel clarified that Contra Loma includes three main areas: Antioch Community Park, Contra Loma Reservoir, and Contra Loma Regional Park. He also noted the following key points regarding the current management and use of Contra Loma: Antioch Community Park is managed by the City of Antioch, and it includes many recreational opportunities including softball fields, picnic areas, and trails; the reservoir is operated by CCWD and its main purpose is to supply drinking water (and therefore water quality is the highest priority); and Contra Loma Regional Park is managed by EBRPD and provides recreational activities including a swim lagoon, fishing, and hiking.

Mr. Goebel clarified that the RMP is a land use management plan that will guide the future management of resources of this area for at least the next 10 years and that the input received at this workshop would inform the development of RMP alternatives. He added that these alternatives would be available for review at a second public workshop planned for January 2011, and that based on public comments received at that time, the alternatives are expected to be refined to three alternative management scenarios.

¹ This summary represents Kearns & West's efforts to synthesize the input received by workshop participants as well as the responses provided by project staff. This report focuses on summarizing the public's input on key issues; it is not intended to serve as a transcript of all issues discussed or points made.



U. S. Department of the Interior
Bureau of Reclamation

III. Workshop Topic Stations

Ben Gettleman, Kearns & West, explained the structure and flow of the four topic stations. He noted that at each station, participants would be asked to provide feedback on what is working (priorities), what is not working (concerns), and how it could be improved (opportunities). Each topic station was staffed by a lead and at least one representative from the managing partner agency to answer questions about the RMP process or the area being managed.

Topic Station	Topic	Station Lead	Partner Representative
1	RMP/EIS Process	Scott Goebel (NSR)	
2	Contra Loma Regional Park	Leslie Wagner (NSR)	Anne Rivoire (EBRPD) and other EBRPD staff
3	Contra Loma Reservoir	Sheryl Carter (Reclamation)	Fran Garland (CCWD)
4	Antioch Community Park	Rebecca Gaertner (NSR)	Lonnie Karste (City of Antioch)

The public comments received at each topic station are summarized below:

1. RMP/EIS Process

A. *What is working (priorities)?*

- Sincere appreciation and enjoyment of the park.

B. *What is not working (concerns)?*

- One commentor recently observed an abundance of dead clams around the reservoir shoreline. The commentor is concerned that the dead clams are an indication of poor water quality.
- Over the past 2 years, fewer dragonflies and small fish have been observed along the shoreline.
- Fish catches appear to be down recently.
- Water levels appear to be lower recently.
- Black bass and crappie populations appear to be decreasing. Water level fluctuations may be inhibiting regeneration. These fish lay eggs on the reservoir bottom in April/May. Lowering the reservoir level below the level of the eggs causes egg mortality.
- Algae blooms appear in backwater areas. They are unsightly and promote neglect.
- Apparent abundance of animal feces (geese, horses, dogs) is noticeable around the reservoir, which could reduce reservoir water quality. The feces is unsightly and promotes neglect of reservoir and recreational area.

C. *How could it be improved (opportunities)?*

- Water quality sampling locations should be distributed more widely around the reservoir.
- Maintain water level at a constant elevation in April/May to allow black bass and crappie eggs to hatch. After April/May water level fluctuations would not affect these fish.
- One solution to the feces issue would include abundant signage with telephone contact information to report problems. Suggest placing at least 10 dog feces bag stations throughout the park and adding more garbage cans on NW shore, east shore and dam.

2. Contra Loma Regional Park

A. *What is working (priorities)?*

- Job opportunities – L.G./swim instructors (EBRPD)
- Swimming lessons
- Jr. lifeguard program
- Swimming test – maintains safety
- Swim instructors – very helpful
- Picnic areas – kept clean
- Management of capacity in lagoon area
- Swim program
 - Keeping children safe/life skills
 - A place for families to bond
 - Job placement (JG's)
- Public safety (police/fire) coverage
- Jr. lifeguard program builds self worth and confidence for children

- Community enrichment
- Friday naturalist programs
- Trail quality (much improved)
- Great park for dogs

B. What is not working (concerns)?

- The trails around the west shore get muddy.
- More shade is needed around the lawn at the swim lagoon.
- There is not enough parking at lagoon.
- The swim lagoon is too small.
- There are not enough restroom facilities.
- Children ages 0-5 need a separate safe pool for improved safety (or a portion of existing lagoon should be roped off for toddlers ages 0-5).
- Animal (dog/horse) feces is noticeable along trails around the reservoir.
- There is not enough shade along the trails.
- There is not enough defined off-leash dog areas.
- Horses near the reservoir may pose water quality concerns (feces)
- Restrictions on kayaking to reduce human contact are too severe.
- There are limited mountain bike loop trail opportunities.

C. How could it be improved (opportunities)?

- Placing gravel along the west shore trails could keep them from getting muddy.
- More trees around the park, and especially on the west shore would increase shade.
- Add building/facilities for classes and better bathrooms.
- Expand gravel/overflow parking.
- Have more public clean-up days.
- Issue more littering tickets.
- Add a secure locked “donation box” for walk-ins.
- Expand lagoon or add additional swim areas.
- Improve communication between kiosk attendants/lagoon kiosk attendant/lifeguards/rangers and naturalist programs.
- Create multi-use trail connectors in the following locations:
 - o Between the bulletin board at the stop sign area and the gravel road
 - o Between the boat ramp and the creek side bridge along the water
 - o A full circle around the island (should be gravel)
 - o Between the boat ramp and the east shore trail
 - o At the entrance road
- Make lagoon “non-smoking only” and designate smoking area down-wind from swimmers.
- Patrol and clean up trails at least daily to remove feces/garbage.
- Place more garbage cans along trails.
- Place at least 10 dog feces bag stations at garbage cans and along trails.
- Improve signs about cleaning up feces, using large text that is easy to understand.
- Plant trees along trails for shade.
- Designate more off-leash dog areas, perhaps including:
 - o A dog park within the park
 - o An off-leash area SE of the reservoir in the grassy area (#1 or #2)²
- Educate users about keeping the park clean, especially the picnic areas.
- Use rangers to patrol and talk to users about keeping the park clean. Consider using bilingual rangers.
- Add more signs to clean up picnic areas. These signs should:
 - o Be at each table
 - o Be bilingual
 - o Notify park users about about fines/non-compliance
- Expand trails available to mountain bikes,

² See Appendix B: Map of Contra Loma Regional Park. Participants were able to number areas of the map to comment on.

3. Contra Loma Reservoir

A. *What is working (priorities)?*

- Water and open space matter to:
 - People: health, fitness, spirituality, fun
 - Flora & fauna: habitats, ecosystems
- The lagoon's separation from the reservoir maintains the primary objective of maintaining water quality.

B. *What is not working (concerns)?*

- Lake levels are inconsistent and no warning or notification is provided about fluctuations.
- Trash is exposed or trapped during low water levels.
- Algae is observed on the lake and the shore.
- Fish carcasses are observed along shore, possibly left by birds, fishermen, or nature.
- Restrictions on kayaking to reduce human contact are too severe.

C. *How could it be improved (opportunities)?*

- Consider removing trash and dead tules from the reservoir when water levels are low.
- Remove fish carcasses daily.
- Explain the source of the algae and whether it is caused by neglect.
- Clean up will prevent bad odors from algae and reduce the appearance of neglect.
- Relax restrictions on kayaking.

4. Antioch Community Park

A. *What is working (priorities)?*

- The park is clean and well-maintained in general. Some exceptions include garbage, excrement, and graffiti.
- The park offers abundant team sports with good schedules.
- The facilities are effectively used.
- There is great shade at picnic and play areas.

B. *What is not working (concerns)?*

- There should be less focus on baseball fields and more focus on mixed-use fields. The third baseball diamond should be converted to a multi-use field.
- There is a lack of community presence (e.g., not enough sign-up sheets for special events)
- There is a lack of ranger presence.
- There are not enough garbage bins along the dam.
- There is a lack of dog-waste bags.
- There should be more public input regarding marketing of recreation programs on the site.
- Play structure cleanliness could be improved.
- Car break-ins have increased recently.
- The area between the parking lot and the trail on the west side of the park is unfinished and suffers from erosion.
- The grass area on the west side of the park is not complete and becomes muddy.
- Gate closure times should be specific.
- The gate attendant can be grumpy.
- The soccer fields should be better maintained to address drainage, gophers, and turf quality.
- The soccer fields are not usable in wet weather
- The soccer and multi-use fields are not lighted, which limits use in the winter.

C. *How could it be improved (opportunities)?*

- Reduce flooding at map location #1³.
- Increase police patrols in parking lots.
- Increase trails along the creek and riparian area and improve interconnection between trail systems.
- Improve playground cleanliness, possibly with power washing.
- Eliminate the playground sand or replace the sand with clean sand
- Increase police presence.
- Improve muddy areas with grass or gravel.
- Clear figs on the play area more regularly.

³ See Appendix C: Map of Antioch Community Park.

- Improve pathway lighting.
- Create a botanical garden in the open space adjacent to the soccer fields.
- Expand the area for soccer and multi-use fields by adding fields to the south.
- Install lighting on the soccer/multi-use fields.
- Install synthetic fields for all-weather use
- Improve maintenance of existing soccer fields
- Replace the existing natural turf on soccer fields with Bermuda or other more robust turf.

IV. Workshop Recap and Next Steps

Following the topic station session, the leads for each station reported back to the group on key themes.

1. **RMP/EIS:** There were general concerns about water quality issues, citing increased sightings of dead clams on the shoreline and fewer sightings of insects and small fish. The suggestion to keep the reservoir's water level steady in April/May was also noted.
2. **Contra Loma Regional Park:** Participants enjoy the park in general, particularly the swimming area and job opportunities. This park could benefit from improved trails, picnic areas, and additional signage.
3. **Contra Loma Reservoir:** This area is used a lot and is important. People wanted to know more about when water levels will change and whether this reservoir is regularly patrolled or cleaned.
4. **Antioch Community Park:** This park is well maintained and enjoyed by users. Participants would like to see the trails better connected, the multi-use facilities and areas increased, and police presence increased.

Comments during this round will be received until August 31, 2010. To receive a Comment Form or additional information, please email or call Ben Gettleman: bgettleman@kearnswest.com, (415) 391-7900. A second public workshop is planned for January 2011, where Reclamation will solicit feedback on the alternative RMP packages.

Public Workshop Agenda

Wednesday, August 4, 2010 • 6:00 – 9:00 pm

Sutter Elementary School • 3410 Longview Road • Antioch, CA 94509

Workshop Goals

During the workshop, public participants will:

- **Learn** about the planning and environmental review process
- **Identify** key resource or land use issues at Contra Loma
- **Provide opinions** about the recreational uses and facilities now at Contra Loma Regional Park and the Antioch Community Park
- **Identify** opportunities for improving resource management and recreational experiences

Workshop Agenda

5:30 pm – 6:00 pm: Registration

6:00 pm – 6:15 pm: Welcome and Project Overview

The project team will provide an overview of the management plan and environmental review processes. They will also outline the flow of the workshop.

6:15 pm – 8:30 pm: Workshop Topic Stations

Workshop attendees will visit the topic stations and provide comments. The project team and managing partner agency staff will be available at each station to discuss specific aspects of Contra Loma, to answer questions and to receive your feedback.

Topic Stations:

- Station 1: Contra Loma RMP/EIS Process
- Station 2: Contra Loma Regional Park
- Station 3: Contra Loma Reservoir
- Station 4: Antioch Community Park

8:30 pm – 9:00 pm: Report Back and Next Steps

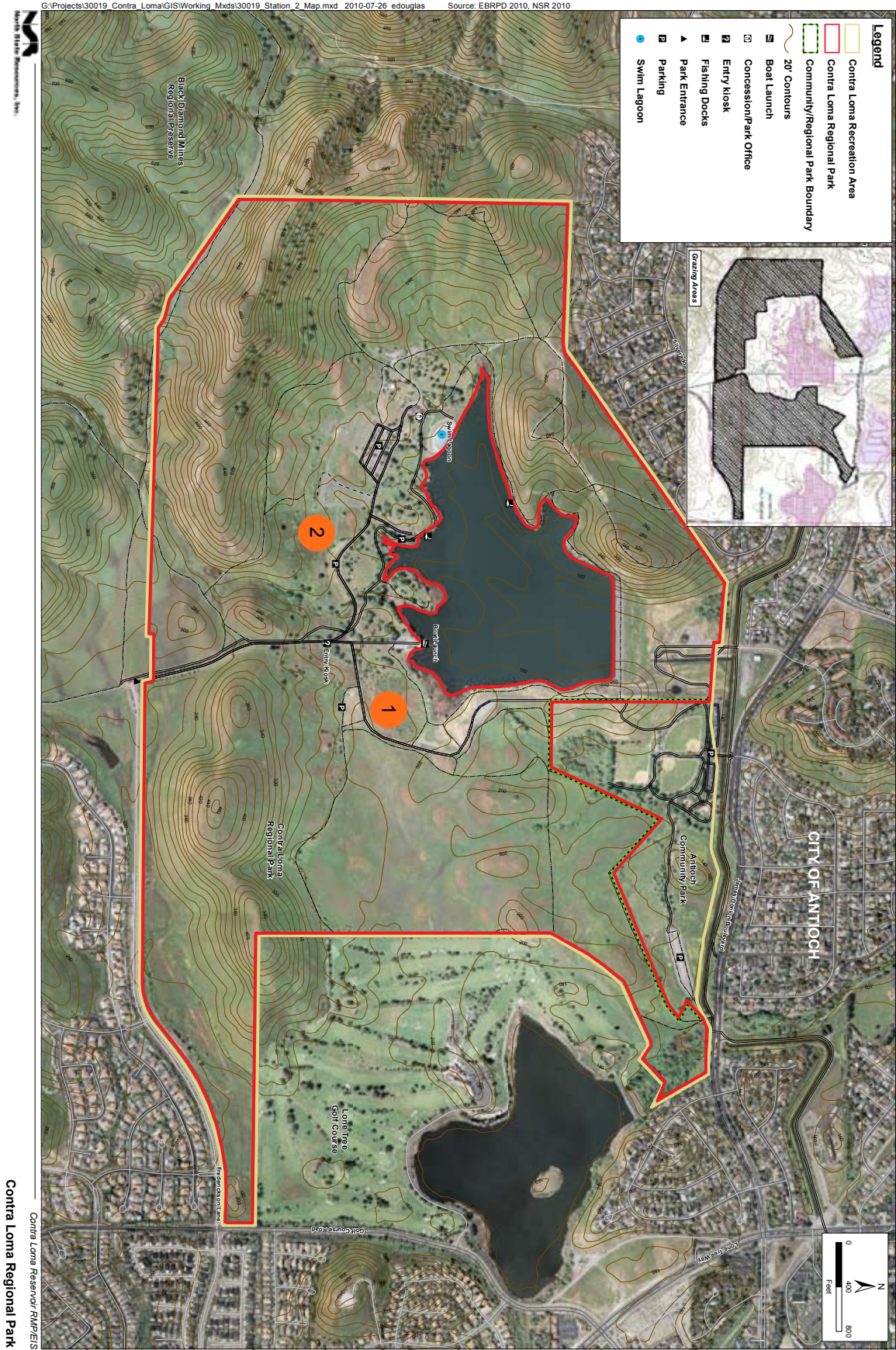
Key themes and issues from each topic station will be shared with the larger group. The project team will also discuss next steps and future opportunities for public involvement.

Background

The U.S. Bureau of Reclamation (Reclamation) is preparing a Resource Management Plan (RMP) for the Contra Loma Reservoir and Recreation Area (Contra Loma), which includes the Contra Loma Regional Park and the Antioch Community Park. The RMP is intended to establish uniform policy and land management guidelines that promote organized use, development, and management of Contra Loma while protecting water quality, water supply, and natural and cultural resources.

Appendix B: Map of Contra Loma Regional Park

Contra Loma Regional Park



Antioch Community Park



Workshop Attendees

Name	Organization/Affiliation
Martha Parsons	Antioch City Council
Lonnie Karste	City of Antioch
Brian Hooker	Congressman Garamendi
Fran Garland	Contra Costa Water District
Scott Bartlebaum	Delta Youth Soccer League
Neal Fujita	East Bay Regional Park District
Nancy Kalser	East Bay Regional Park District
Matt Medison	East Bay Regional Park District
Dan McCormick	East Bay Regional Park District
Paul Miller	East Bay Regional Park District
Anne Rivoire	East Bay Regional Park District
Anne Scheer	East Bay Regional Park District
Dania Stoneham	East Bay Regional Park District
Jeff Wilson	East Bay Regional Park District
Ben Gettleman	Kearns & West (Facilitation support)
Christine Lim	Kearns & West
Rebecca Gaertner	North State Resources
Scott Goebel	North State Resources
Leslie Wagner	North State Resources
Rich Brownley	Participant
Daniel Herzberg	Participant
Steve Lucky	Participant
Janet Ray	Participant
Cort Wilcox	Participant
Christina Wilcoy	Participant
Cuiqui Hernandez	St. Anthony Church
Nely Rubio	St. Anthony Church
Maricelo Reynoso	St. Anthony Church
Sheryl Carter	U.S. Bureau of Reclamation
Dan Broin	Village Community Resource Center
Eric Hoffman	Village Community Resource Center
Anthony Murillo	Village Community Resource Center