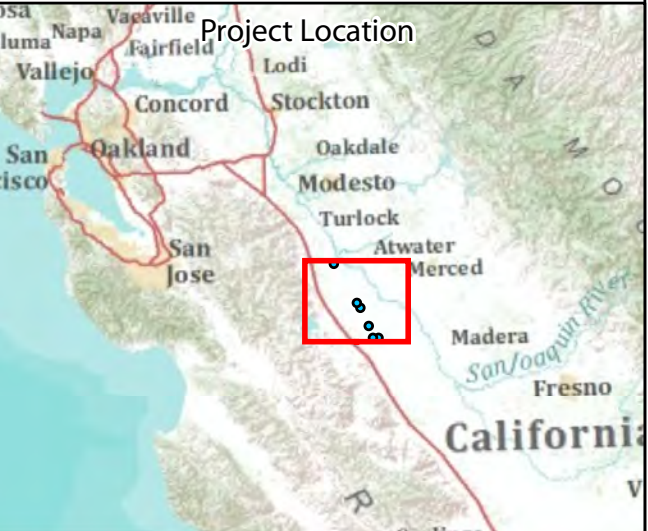
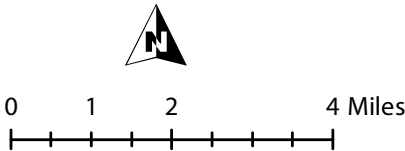


**Figure 2-1**  
**Proposed Well Locations**  
**Region 4: Grassland**

**Legend**  
● Well Location

**Label Key**  
Water District - Well Number  
G = Grasslands Water District

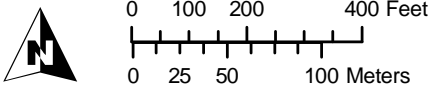






**Figure 2-2**  
**Location of Well G-1**  
Merced County  
T. 10 S, R. 11 E  
7.5' USGS Topo Quad:  
Los Banos

- Legend**
- Potential Utility Connections**
- Power Supply
  - Power & Water Supply
  - Water Supply
  - Construction Water Supply
- Disturbance Areas**
- Permanent Disturbance Area for Well Pad (30 Sq. Feet)
  - Temporary Disturbance Area for Well Pad Construction

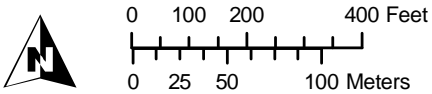






**Figure 2-3**  
**Location of Well G-2**  
Merced County  
T. 11 S, R. 11 E  
7.5' USGS Topo Quad:  
Charleston School

- Legend**
- Potential Utility Connections**
- Power Supply
  - Power & Water Supply
  - Water Supply
  - Construction Water Supply
- Disturbance Areas**
- Permanent Disturbance Area for Well Pad (30 Sq. Feet)
  - Temporary Disturbance Area for Well Pad Construction







**Figure 2-4**  
**Location of Well G-3**  
Merced County  
T. 9 S, R. 10 E  
7.5' USGS Topo Quad:  
San Luis Ranch

- Legend**
- Potential Utility Connections**
- Power Supply
  - Power & Water Supply
  - Water Supply
  - Construction Water Supply
- Disturbance Areas**
- Permanent Disturbance Area for Well Pad (30 Sq. Feet)
  - Temporary Disturbance Area for Well Pad Construction

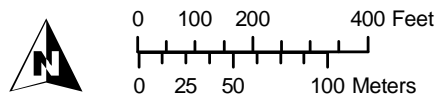






**Figure 2-5**  
**Location of Well G-4**  
Merced County  
T. 9 S, R. 10 E  
7.5' USGS Topo Quad:  
Los Banos

- Legend**
- Potential Utility Connections**
- Power Supply
  - Power & Water Supply
  - Water Supply
  - Construction Water Supply
- Disturbance Areas**
- Permanent Disturbance Area for Well Pad (30 Sq. Feet)
  - Temporary Disturbance Area for Well Pad Construction







**Figure 2-6**  
**Location of Well G-5**  
Merced County  
T. 11 S, R. 11 E  
7.5' USGS Topo Quad:  
Charleston School

- Legend**
- Potential Utility Connections**
- Power Supply
  - Power & Water Supply
  - Water Supply
  - Construction Water Supply
- Disturbance Areas**
- Permanent Disturbance Area for Well Pad (30 Sq. Feet)
  - Temporary Disturbance Area for Well Pad Construction







**Figure 2-7**  
**Location of Well G-6**  
Merced County  
T. 7 S, R. 9 E  
7.5' USGS Topo Quad:  
Gustine

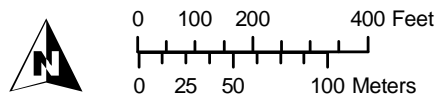
**Legend**

**Potential Utility Connections**

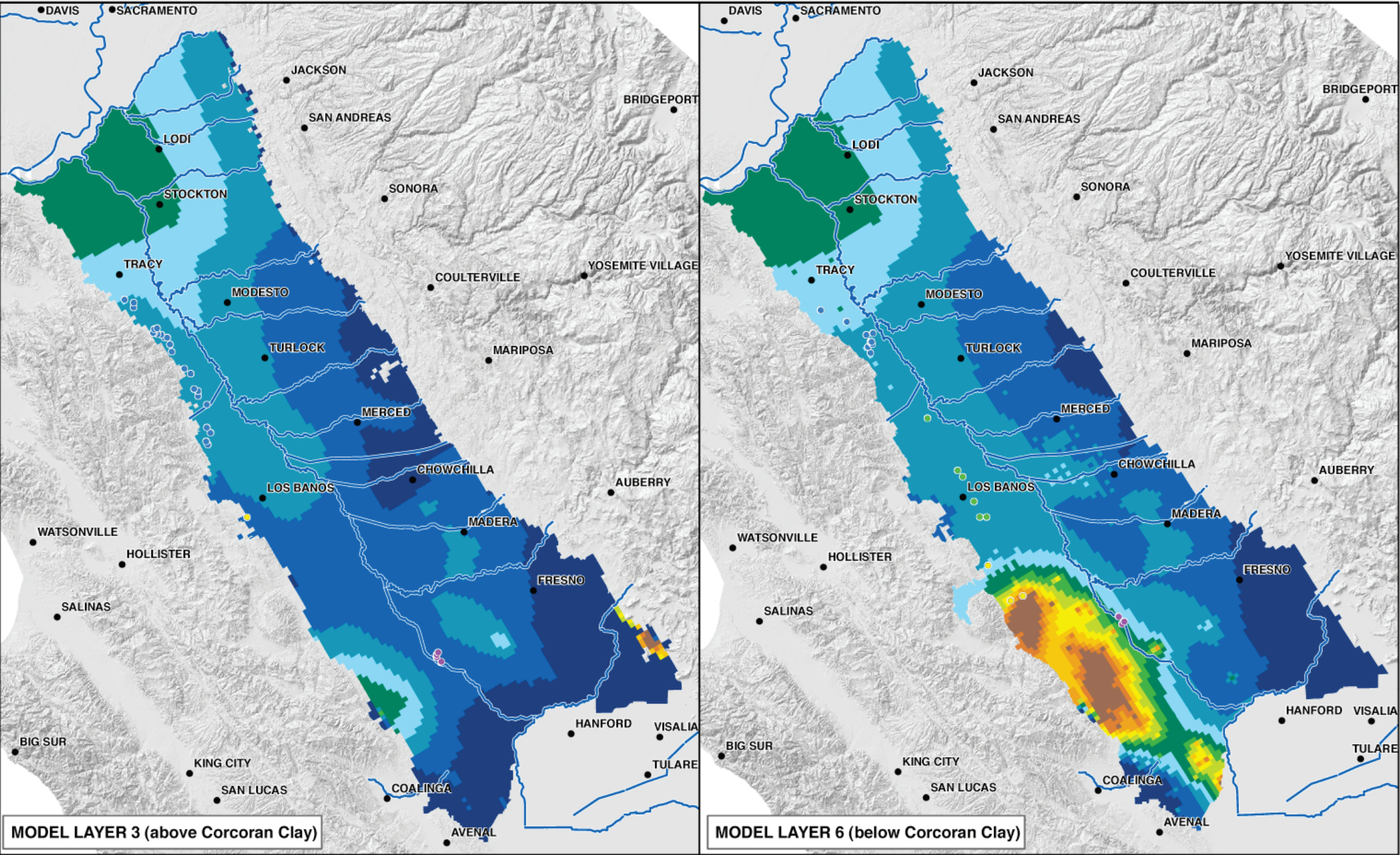
- Power Supply
- Power & Water Supply
- Water Supply
- Construction Water Supply

**Disturbance Areas**

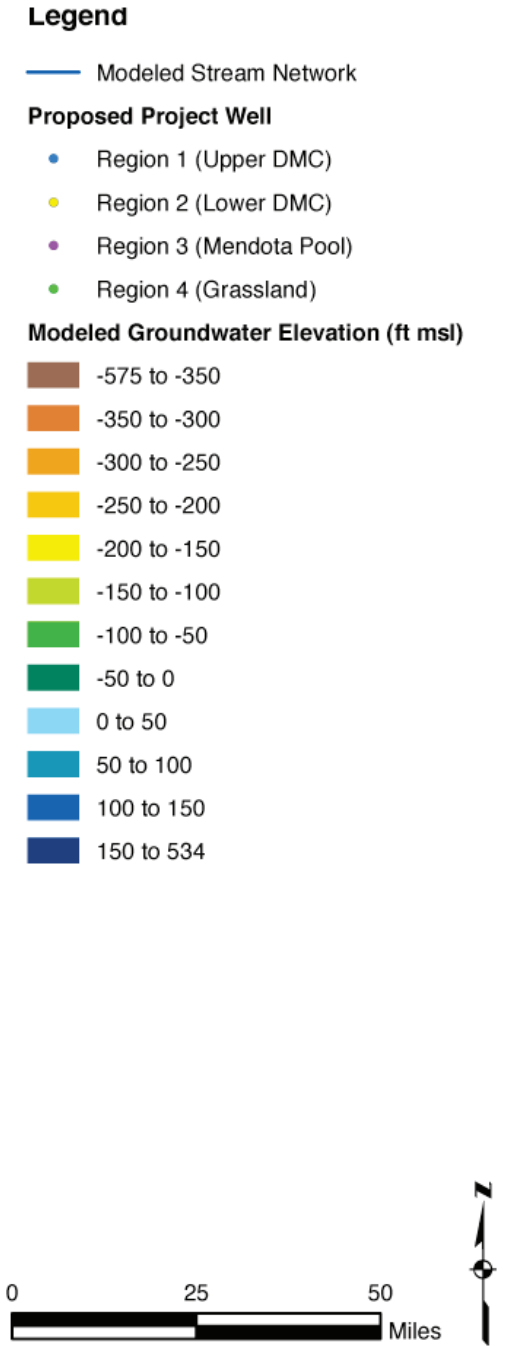
- Permanent Disturbance Area for Well Pad (30 Sq. Feet)
- Temporary Disturbance Area for Well Pad Construction







- Notes**
1. Color-coded areas encompass the groundwater subbasins of the San Joaquin Valley Groundwater Basin that are within 20 miles of a Proposed Project Well.
  2. Proposed project wells with pumping assigned in Model Layer 3 are displayed on the Model Layer 3 image, whereas those assigned in Model Layer 6 are displayed on the Model Layer 6 image.



**Figure 3.1-1**  
**Modeled September 1992 Groundwater Elevations above (Model Layer 3) and below (Model Layer 6) the Corcoran Clay**