

Appendix A Well Maps



Figure A-1
Location of Well B-1
San Joaquin County
T. 3 S, R. 5 E
7.5' USGS Topo Quad:
Tracy

- Legend**
- Potential Utility Connections**
- Power Supply
 - Power & Water Supply
 - Water Supply
 - Construction Water Supply
- Disturbance Areas**
- Permanent Disturbance Area for Well Pad (30 Sq. Feet)
 - Temporary Disturbance Area for Well Pad Construction

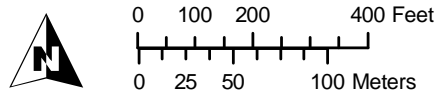




Figure A-2
Location of Well WS-1
Stanislaus County
T. 4 S, R. 6 E
7.5' USGS Topo Quad:
Solyo

- Legend**
- Potential Utility Connections**
- Power Supply
 - Power & Water Supply
 - Water Supply
 - Construction Water Supply
- Disturbance Areas**
- Permanent Disturbance Area for Well Pad (30 Sq. Feet)
 - Temporary Disturbance Area for Well Pad Construction





Figure A-3
Location of Well WS-2
Stanislaus County
T. 4 S, R. 7 E
7.5' USGS Topo Quad:
Westley

- Legend**
- Potential Utility Connections**
- Power Supply
 - Power & Water Supply
 - Water Supply
 - Construction Water Supply
- Disturbance Areas**
- Permanent Disturbance Area for Well Pad (30 Sq. Feet)
 - Temporary Disturbance Area for Well Pad Construction





Figure A-4
Location of Well WS-3
Stanislaus County
T. 5 S, R. 7 E
7.5' USGS Topo Quad:
Westley

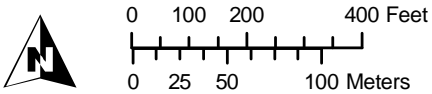
- Legend**
- Potential Utility Connections**
- Power Supply
 - Power & Water Supply
 - Water Supply
 - Construction Water Supply
- Disturbance Areas**
- Permanent Disturbance Area for Well Pad (30 Sq. Feet)
 - Temporary Disturbance Area for Well Pad Construction





Figure A-5
Location of Well WS-4
Stanislaus County
T. 5 S, R. 7 E
7.5' USGS Topo Quad:
Westley

- Legend**
- Potential Utility Connections**
- Power Supply
 - Power & Water Supply
 - Water Supply
 - Construction Water Supply
- Disturbance Areas**
- Permanent Disturbance Area for Well Pad (30 Sq. Feet)
 - Temporary Disturbance Area for Well Pad Construction



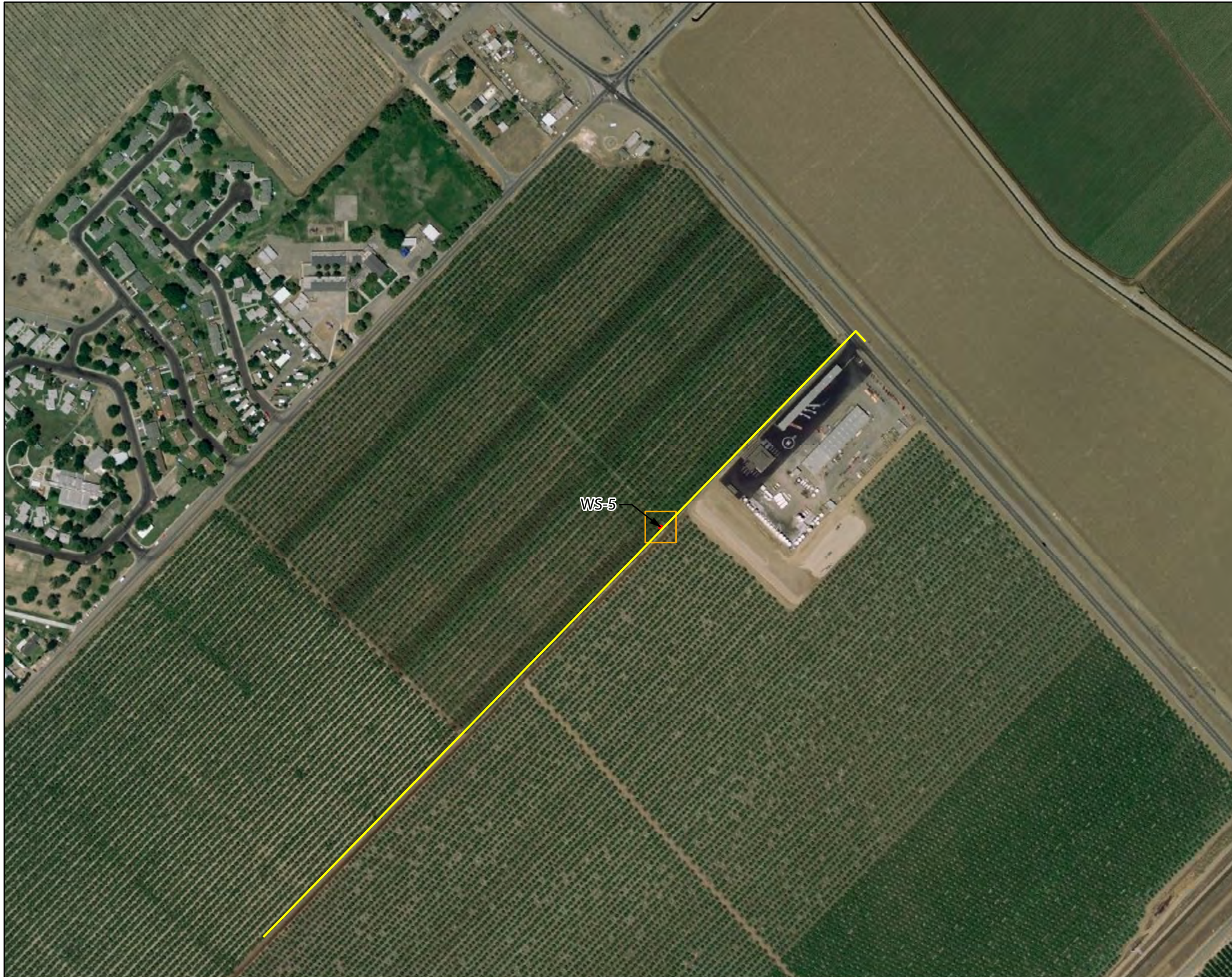


Figure A-6
Location of Well WS-5
Stanislaus County
T. 5 S, R. 7 E
7.5' USGS Topo Quad:
Westley

- Legend**
- Potential Utility Connections**
- Power Supply
 - Power & Water Supply
 - Water Supply
 - Construction Water Supply
- Disturbance Areas**
- Permanent Disturbance Area for Well Pad (30 Sq. Feet)
 - Temporary Disturbance Area for Well Pad Construction

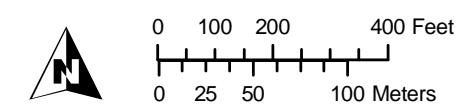




Figure A-7
Location of Well WS-6
Stanislaus County
T. 5 S, R. 7 E
7.5' USGS Topo Quad:
Westley

- Legend**
- Potential Utility Connections**
- Power Supply
 - Power & Water Supply
 - Water Supply
 - Construction Water Supply
- Disturbance Areas**
- Permanent Disturbance Area for Well Pad (30 Sq. Feet)
 - Temporary Disturbance Area for Well Pad Construction

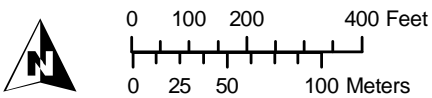




Figure A-8
Location of Well WS-7
Stanislaus County
T. 5 S, R. 7 E
7.5' USGS Topo Quad:
Westley

- Legend**
- Potential Utility Connections**
- Power Supply
 - Power & Water Supply
 - Water Supply
 - Construction Water Supply
- Disturbance Areas**
- Permanent Disturbance Area for Well Pad (30 Sq. Feet)
 - Temporary Disturbance Area for Well Pad Construction





Figure A-9
Location of Well D-1
San Joaquin County
T. 3 S, R. 5 E
7.5' USGS Topo Quad:
Tracy

- Legend**
- Potential Utility Connections**
- Power Supply
 - Power & Water Supply
 - Water Supply
 - Construction Water Supply
- Disturbance Areas**
- Permanent Disturbance Area for Well Pad (30 Sq. Feet)
 - Temporary Disturbance Area for Well Pad Construction



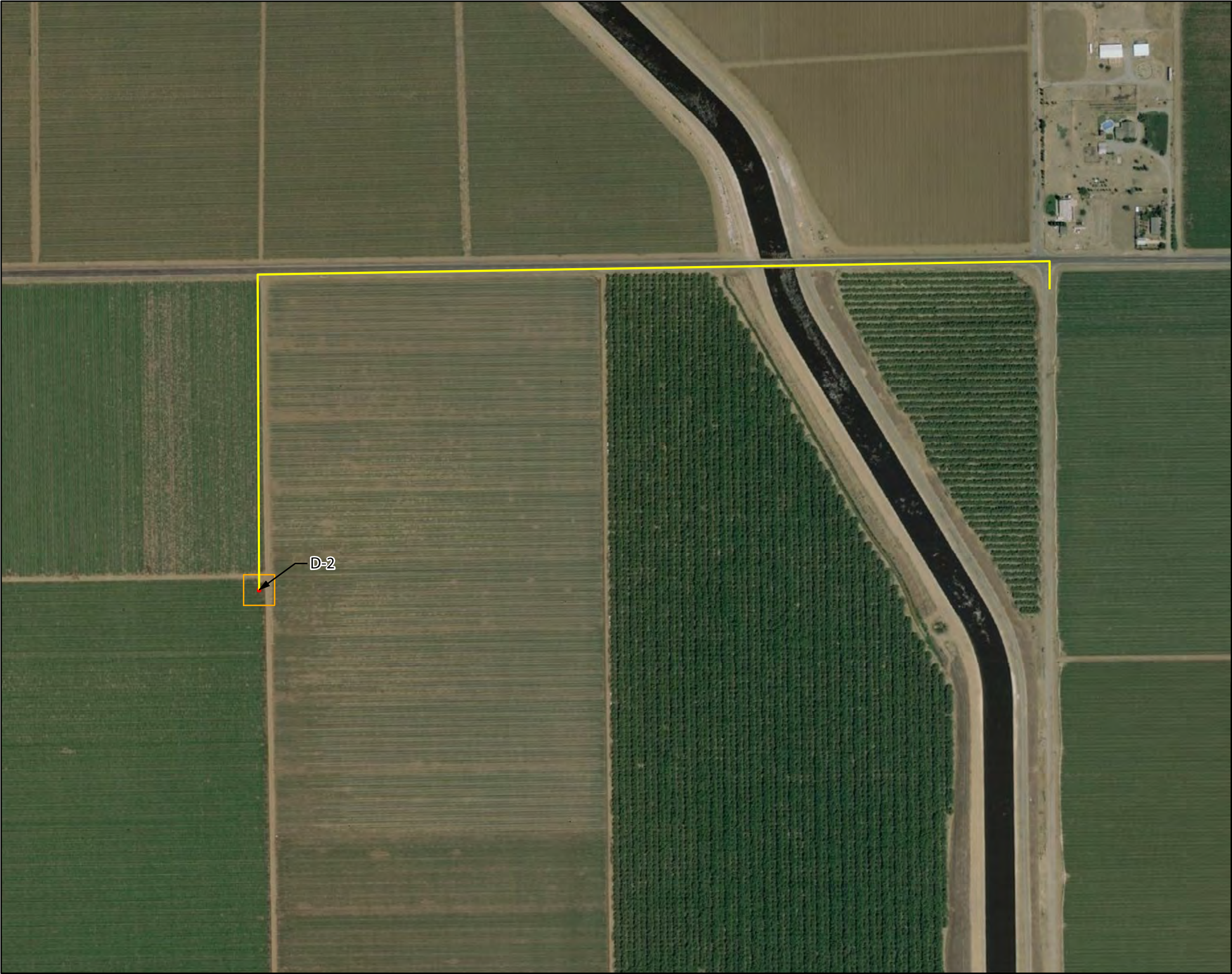


Figure A-10
Location of Well D-2
Stanislaus County
T. 6 S, R. 8 E
7.5' USGS Topo Quad:
Crows Landing

- Legend**
- Potential Utility Connections**
- Power Supply
 - Power & Water Supply
 - Water Supply
 - Construction Water Supply
- Disturbance Areas**
- Permanent Disturbance Area for Well Pad (30 Sq. Feet)
 - Temporary Disturbance Area for Well Pad Construction



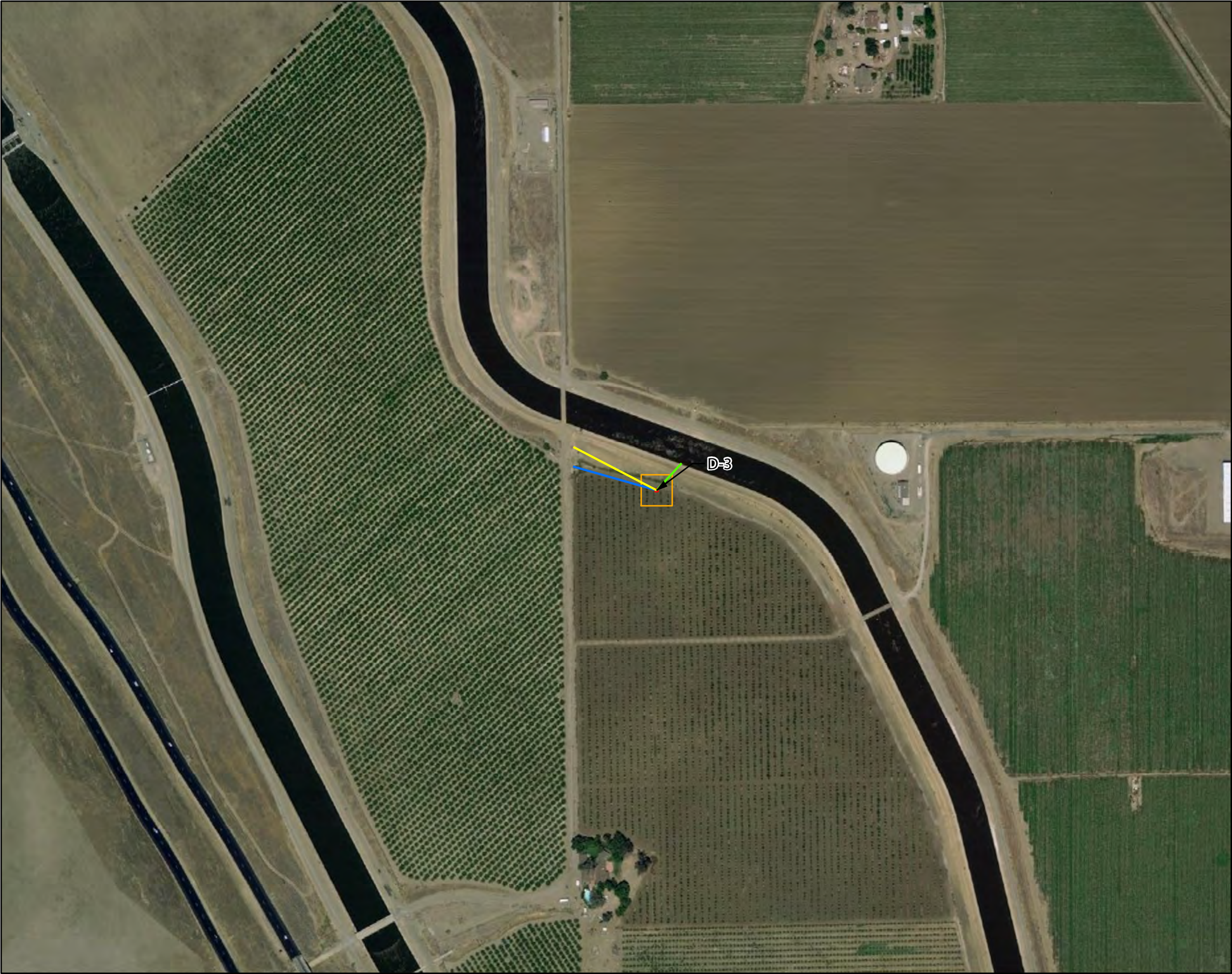


Figure A-11
Location of Well D-3
Stanislaus County
T. 5 S, R. 7 E
7.5' USGS Topo Quad:
Patterson

Legend

Potential Utility Connections

- Power Supply
- Power & Water Supply
- Water Supply
- Construction Water Supply

Disturbance Areas

- Permanent Disturbance Area for Well Pad (30 Sq. Feet)
- Temporary Disturbance Area for Well Pad Construction

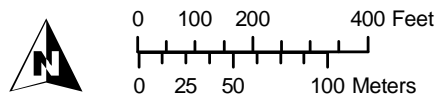




Figure A-12
Location of Well D-4
Stanislaus County
T. 5 S, R. 7 E
7.5' USGS Topo Quad:
Westley

- Legend**
- Potential Utility Connections**
- Power Supply
 - Power & Water Supply
 - Water Supply
 - Construction Water Supply
- Disturbance Areas**
- Permanent Disturbance Area for Well Pad (30 Sq. Feet)
 - Temporary Disturbance Area for Well Pad Construction





Figure A-13
Location of Well D-5
Stanislaus County
T. 6 S, R. 8 E
7.5' USGS Topo Quad:
Patterson

- Legend**
- Potential Utility Connections**
- Power Supply
 - Power & Water Supply
 - Water Supply
 - Construction Water Supply
- Disturbance Areas**
- Permanent Disturbance Area for Well Pad (30 Sq. Feet)
 - Temporary Disturbance Area for Well Pad Construction



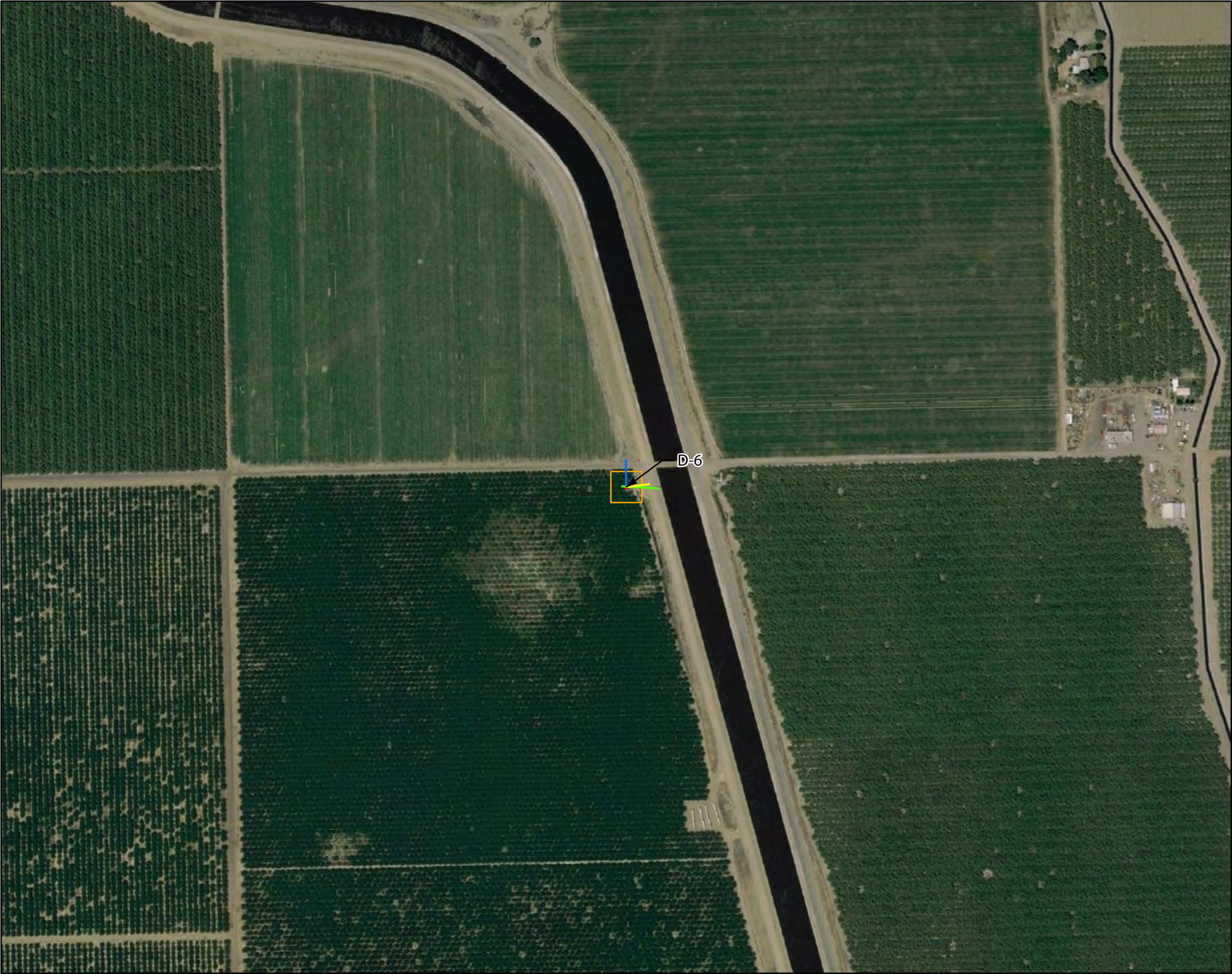


Figure A-14
Location of Well D-6
Stanislaus County
T. 4 S, R. 7 E
7.5' USGS Topo Quad:
Westley

- Legend**
- Potential Utility Connections**
- Power Supply
 - Power & Water Supply
 - Water Supply
 - Construction Water Supply
- Disturbance Areas**
- Permanent Disturbance Area for Well Pad (30 Sq. Feet)
 - Temporary Disturbance Area for Well Pad Construction

